

## Alumni Notes

### Class of 1997 (PCC)

**Dina Sandei** - 1997 PCC graduate with a Certificate of Achievement (CA) degree in General Office Clerk (GOC). Sandei works as a Secretary at the National Emergency Management Office (NEMO).



### Class of 1997 (PCC)

**Kesoal Keto Blailles** - 1997 PCC graduate with an Associate of Arts (AA) degree in Liberal Arts (LA). Blailles is a Customer Service Representative at the Palau National Communications Corporation (PNCC).



She is also one of the many employees at PNCC who loyally donate on a bi-weekly basis to the PCC Endowment Fund.

### Class of 1997 (PCC)

**Atu Taumoepau** - 1997 PCC graduate with a Certificate of Achievement (CA) in Secretarial Science (SEC). Taumoepau works as an enforcement officer for the Ministry of Justice- Division of Fish & Wildlife Protection.



**Alumni Notes** showcases MOC&PCC alumni who contribute to the quality of life in their local community and are positive role models for other PCC students to emulate. If you are that alumni or know someone who is, please contact the PCC Development Office at telephone number 488-2471. We would like to feature you and all alumni in future issues of the *Mesekiu's News*.

## Celebrating Birthdays

Sherry Ngirmeriil	May 8
Natalia Rekemesik	May 9
Alvina Timarong	May 11
Keorung Olkeriil	May 12
Kuye Belelai	May 13

Happy Birthday To You!

**MESEKIU'S NEWS**  
Palau Community College  
P.O. Box 9, Koror, Palau 96940  
www.palau.edu

## Internship Application for Summer 2009

In preparation for the Internship placement for Summer 2009, we need to know the number of students who will be participating in the internship program training and their respective trade areas at this time. This will allow us time to identify and secure commitments from appropriate employers who will be providing training to our students.

To assist this effort, Academic Advisors are requested to review their advisee's folders and to advise those who will be eligible to participate in the internship training to come to the WCCC Office and see me, the Extension Program Coordinator, Mr. Vincent Ito and fill out the required application forms.

Application forms are now ready for pick up anytime during working hours from Monday to Friday. Deadline for submission of completed application forms is Wednesday, May 20, 2009 in order for student to be considered for internship placement.

Internship is provided as a final requirement for students who have completed all their course requirements on campus or at most have one remaining to be taken concurrently with the training. It allows students to be placed on the job in their respective field of training working on a full time basis as intern trainee fro the semester. The practical experience gained from the training will be counted as credits required for students to graduate.

If you have any questions, call me Vincent Ito at telephone number 488-2471, ext 270.



Vincent Ito

## Swine flu Q&A

Q. How do people catch the Swine flu?  
A. Public Health officials believe that swine influenza A (H1N1) virus is spreading the way that the seasonal flu spreads every year- when people infected with the flu cough or sneeze and others breathe in airborne droplets containing the virus. People may also be getting swine flu from touching surfaces such as doorknobs contaminated with the virus and then touching their face or mouth. Infected people can spread the flu before they have symptoms, as well as while they are sick.

Q. How can I protect myself and my family from Swine flu?  
A. Wash your hands frequently with soap and water. Also, you should get plenty of sleep, exercise, manage your stress, eat healthy food, and drink plenty of water. Avoid close interactions with people who are sick or try not to touch surfaces that could be contaminated with the virus. Avoid touching your nose, eyes, or mouth.

Q. Does hand sanitizer work if I can't wash my hands?  
A. Doctors advise using sanitizing wipes and alcohol-based gels when you do not have access to soap, water, and a sink. If you use gel, rub your hands until it dries. It's preferable to wash your hands.

Q. Should I wear a mask to keep from catching or spreading Swine flu?  
A. Officials are not recommending that people wear a mask in public places in the United States at this time. Medical professionals treating people suspected to have Swine flu are being advised to take the usual precautions for treating people with infectious diseases, including wearing surgical masks.

Q. What are the symptoms of Swine flu?  
A. They are similar to symptoms of the regular seasonal flu, and include fever, cough, sore throat, body aches, headaches, chills, and fatigue. Some people who have gotten the swine flu have had diarrhea, nausea, vomiting.

Q. Is it safe to eat pork?  
A. Yes, as long as it is properly cooked and handled. You cannot get swine flu from eating pork products.

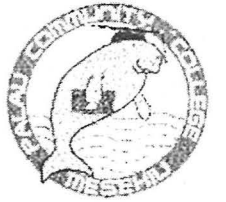
For the complete list of FAQ about the Swine flu, stop by the Development Office or call ext. 253.

# Palau Community College

FREE COPY



# MESEKIU'S NEWS



Friday, May 8, 2009

Weekly Newsletter

Volume 11, Issue 19

## Pell Grant Now Available Year-Round Palau, RMI, FSM Students Now Eligible for AC Grant



Director Katosang talks to students about the new Federal Student Aid regulations.

According to the latest update from the Federal Student Financial Aid program (see table below), the Pell Grant financial assistance which used to be available to students only during the regular semester (fall & spring) is now available to students who enroll during the summer semester. According to the

Director of Admissions and Financial Aid Dahlia Katosang who attended the Federal Student Financial Aid conference in Hawaii in early April, the new regulation which expands the Pell Grant coverage to include summer semester will take effect this summer. Katosang also said that the Academic Competitiveness Grant (ACG) which traditionally was only earmarked for US citizens when it was launched in 2005, is now available to citizens from Palau, RMI, and FSM.

To make sure that the eligible students at PCC are aware of the new Federal

See Pell Grant on Page 2

**PCC-SSS  
Sophomore's Jobsite  
Visit to PICRC**  
By: SSS Staff



Students await to see what types of opportunities await them at the Palau International Coral Reef Center.

Eleven (11) sophomores of PCC Student Support Services Program waited anxiously in front of Ewatel, with Maria Joseph and Adora Nobuo for the PCC van to bring them to Palau

See SSS at PICRC on Page 3

### BULLETIN, May 4, 2009

#### FEDERAL UPDATES FOR STUDENT FINANCIAL AID

The following Federal Updates will take effect during 2009-2010 Award Year.

- PELL GRANT BECOMES A YEAR-ROUND PROGRAM**  
This means, students may receive up to two consecutive Federal Pell Grant (FPG) Scheduled Awards during a single award year in order to accelerate completion of a program leading toward a degree or certificate.  
Example: 1<sup>st</sup> FPG Scheduled Award is \$5350 and the 2<sup>nd</sup> FPG Schedule Award may be another \$5350 that adds up to \$10,700, which means a student may receive up to 200% of the scheduled award year for the same award year.  
Student must be attending at least halftime (6 credits) in order to receive any payment of 2<sup>nd</sup> Pell award.
- Maximum Duration of Eligibility for PELL GRANT.**  
This limits the period of time that a student may receive a Federal Pell Grant to 18 full time SEMESTERS or 9 years (900%) of Federal Pell Grant Scheduled Awards. This provision applies only to students who first received a Pell Grant on or after July 1, 2008.  
Note: Students are still required to make Satisfactory Academic Progress (SAP) toward completion of their degree within 150% of the length of the program. Maximum eligibility time frame for PCC students to complete their first degree is within 90 credits.
- Academic Competitiveness Grant (ACG) and Eligibility Requirements**
  - US citizens or eligible noncitizens (citizens from FSM, RMI and Palau).
  - Enrollment status may be full-time, three-quarter time, or halftime.
  - Students must have received a high school diploma, and successfully completed a rigorous high school program (4 years of English, 3 years of math, science, and social studies and one year of foreign language) after January 1, 2006. [note: Refer to page 2 for more information] and must be a Pell Grant Recipient.
  - ACG Eligibility for Freshman does not require certain GPA.
  - ACG Eligibility for Sophomore requires a cumulative GPA of at least 3.0 at the completion of the freshman year (30 credits).
  - A freshman can only receive an ACG award of \$750.
  - A sophomore can only receive an ACG award of \$1300.

Note: Payments must be reduced if the total expected family contribution (Pell Grant, FSEOG, FWS and ACG) exceeds the student's cost attendance.

For more information, contact the Director of Admissions & Financial Aid at 488-2470 or 488-2471, ext. 233 or through an email address: dahliapcc@palauet.net.

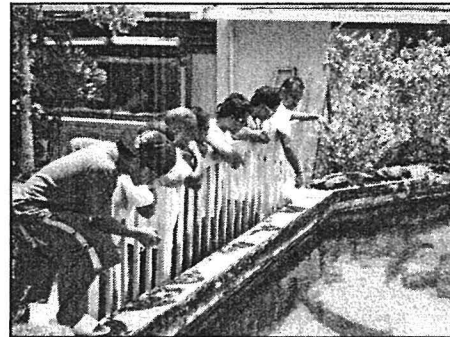
/s/	/s/	/s/
Dahlia M. Katosang, Director Admissions & Financial Aid	Marensia Edward Dean of Students/ Chair, Committee on Student Financial Aid	Patrick U. Tellei, EdD President

## SSS at PICRC, from Front Page

International Coral Reef Center on Friday, May 1, 2009, on a jobsite visit. We were all excited to see what career information we could gather from this visit. Upon arriving, Carol Emaurois, Head of Education Program, Kambes Kesolei, Head of Aquarium, John Wong, Head of Engineering, Waisang Mariur, Administrative Officer, and Noelle Wenty, a researcher, introduced themselves to us. Carol started off by giving students an opportunity to introduce themselves and their chosen field of study. She then moved on to share with us some reasons why the center was created. She explained some of the researchers' work including Marine Protected Areas (MPO) where abundance of life is much more evident compared to non protected areas. After a brief but interesting prologue, a representative from each department took turns to explain their daily routines. Kambes explained how the aquarium must be cleaned and maintained to keep its inhabitants healthy and alive. Noelle explained how researchers collect data to show and inform the public the need to preserve our ocean. John from Engineering Department shared that his department is basically the arm and leg of the center: whatever each department need, they will provide, including repairing pipes that pump water in and out of the aquarium daily, providing equipments for researchers such as diving gears, and transporting teams to conduct public outreach activities. Waisang, on the other hand, explained especially to Office Administration majors the importance of keeping files organized for easy access as well as maintaining their confidentiality. After everyone was done, Carol explained further what each occupation required in terms of educational background. She also shared that education will get you in the door but hard work, dedication, and loyalty will keep you in. Carol ended with few tips on how to preserve our water and its inhabitants. Once the briefing of the center was over, Noelle gave a mini tour of the researchers' work area, showcasing collections of different species of corals. As our last treat, Kambes kindly guided us as we took a tour at the aquarium, where some students were in awe after they saw a shark up close and personal. After the tour, students and staff went back to the SSS Lab for lunch and a short workshop, entitled "Improve Career Options," presented by Adora Nobuo. The workshop highlighted important characteristics and/or qualities that employers look for in applicants, which students can and should begin to develop in themselves.

We extend our gratitude to Carol, Kambes, John, Waisang, and Noelle for making our Job Site Visit to PICRC an interesting and unforgettable experience. It was informative

and despite our different majors, we were able to benefit from the various areas that make up PICRC. We also want to thank PCC CRE for the van and most of all to Duet for driving us back and forth. Last but not least, thank you PCC Cafeteria for cooking us another tasty lunch.



Students are in awe at the sight of an adult shark as Kambes shared that it was only a baby when they put him in the tank.

## Pell Grant, from Front Page

Financial Aid opportunities and their specific requirements, Katosang has conducted a series of workshops with students, sharing with them the details about the new Pell Grant coverage and the eligibility requirements called for under the ACG program. To be eligible for the ACG program, students must have already taken high school courses in subjects such as English, mathematics, science, social studies, and language.

## Palau Community College Continuing Education Summer Kids Program

PCC-CE Summer Kids Program for 2009 offers the following classes:

- English Reading (3rd-8th Grade)**
- English Writing (3rd-8th Grade)**
- Palauan Orthography (3rd-8th Grade)**
- Math (3rd-8th Grade)**
- Keyboarding (5th-8th Grade)**
- Music (3rd-8th Grade)**

**Marine Science Class (7th & 8th Grade) Monday to Thursday from 9:00 a.m. to 11:00 a.m. Maximum number of students for this class is 20.**

The classes are designed to provide educational activities for students, enhance their abilities to improve in the subject areas, and foster new skills.

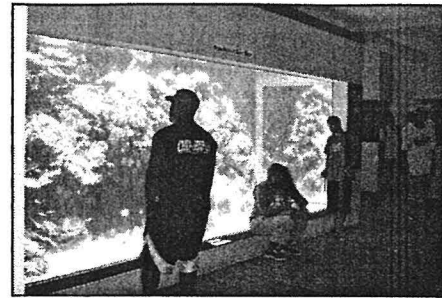
**These classes are on a first come first serve basis. Maximum number of students for each class is 25, except keyboard for maximum of 20.**

If anyone is interested or if you want to know more information about these classes, please call Ms. Taruu Nakamura or Ms. Leona Blaluk at telephone number 488-2470/2471/6223.

Classes will begin on June 08, 2009

Classes will end on July 03, 2009

Last day for registration is June 05, 2009



Dalton, Berkley, and Obechou take a second look at the colorful sealife captured in one of the expansive aquarium tanks.

Katosang has also met with members of the PCC's Committee on Student Financial Aid (COSFA) to ensure that the new regulations are understood and necessary updates be incorporated into PCC's regulations.

The Pell Grant program is one of the three Federal Student Financial Aids available to most students enrolled at PCC. The other two are the Federal College Workstudy Program (FCWP) and the Supplemental Educational Opportunity Grant (SEOG). The three grants combined are more than sufficient to cover the cost of tuition and fees of a full-time student at PCC.

For more information about the Pell Grant and the ACG program, please contact Director Dahlia Katosang at 488-2471, ext. 265.

## BITS AND PIECES...

### LS PROGRAM

## LS Student Trains in Pohnpei...

Library & Information Services (LS) student and Research Librarian at the Palau National Museum Sandy Fernandez was selected to represent Palau in a special library training session to be held in Pohnpei for the next three weeks. The training sessions sponsored by PREL will cover the software used to create digital libraries.

Fernandez is one of only two chosen from Palau to attend the three-week workshop.

The other person selected from Palau is Imengel Mad of G.B. Harris Elementary School.

Fernandez has been a Research Librarian at the Belau National Museum for over 10 years and is the current president of the Palau Association of Libraries (PAL). She is also completing her AS degree in LS this spring.

### INVITATIONS

## Graduation Invitations...

Attention soon-to-be graduates! Your graduation invitations have arrived and will be available for pick up from the Registrar's office starting on Thursday, May 14. Each person will get 5 free but may duplicate additional at own cost.

For questions, please contact Lesley, Lourdes, or Terry at the Registrar's office at 488-2471, ext. 257.

### TODAY

## FSA Meeting...

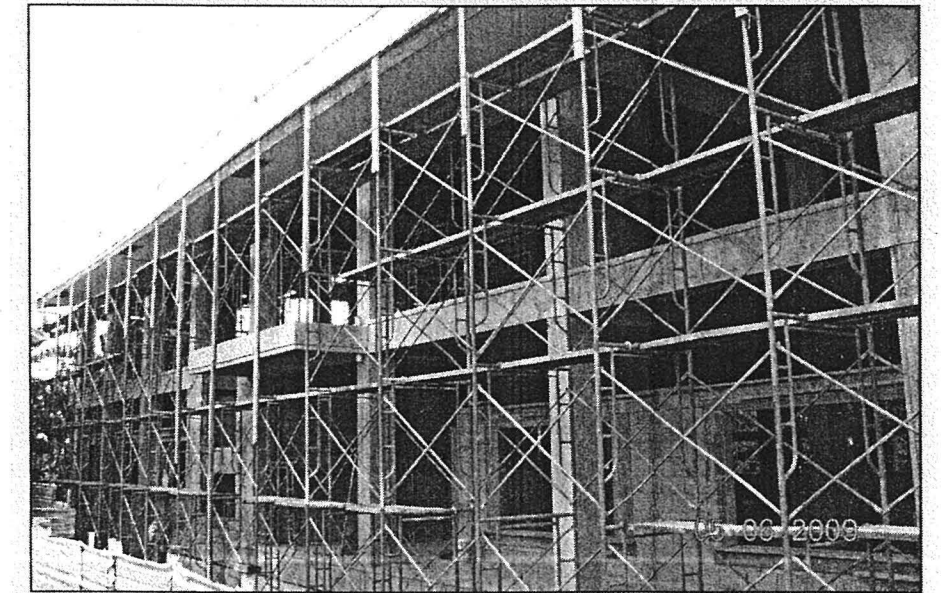
The Faculty Senate Association will hold a meeting today at 12 noon in room #63. All members are encouraged to attend.

### GIFTS

## Mother's Day Gifts...

The Chuuk Student Organization (CSO) are selling goodie bags for \$5 each and candy roses for 50¢. To order your Mother's Day gift, call Jaz at ext. 241.

## 128 Days Into 270 Days of Construction of the New PCC Library



Designed to follow as much as possible the original area topography, and to blend in with adjacent buildings, the three-story library structure is being built with the first floor underground and only the top two floors visible above ground.

## PCC signs OSEP Agreement with Local NOC

Palau Community College President Dr. Patrick U. Tellei signed an agreement with officials of the Palau National Olympic Committee to implement the Oceania Sports Education Program (OSEP).

PCC and PNOC will work together to implement the main objectives of OSEP, among which are, to provide uniform sport education-curriculum to the people of the Pacific. Curriculum will cover disciplines such as coach and official education, sports administration and sports health through comprehensive breadth of modules ranging from the introductory level through the advanced.

OSEP also aims to establish and deliver a flexible, regional sport education program that is accessible to coaches, administrators,



President Tellei (second left) talks to PNOC President Frank Kyota, Secretary General Baklai Temengil, and Oceania Sports Officers, after signing the OSEP agreement.

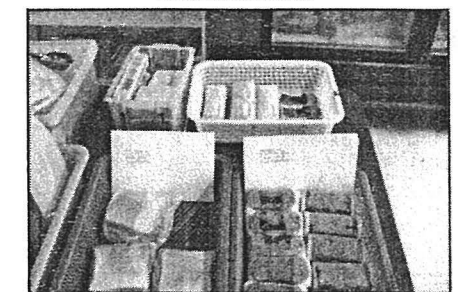
and officials of all levels throughout the Pacific Islands.

President Tellei said that Recreation Office staff Hamilton Maech who recently attended an OSEP training program in Fiji is one of the three OSEP certified presenters and assessor and will help with other PNOC staff to conduct courses and training.

The following are the courses slated to be offered next year.

1. Sport in Communities Administrator
2. Community Coach/Official
3. Management in Sporting Organizations
4. Competition Coach
5. Presenters
6. Assessors

## "Green" Bentos at the PCC Bookstore



"Green" bentos at the bookstore

The PCC Bookstore is happy to announce that, with the cooperation of all bento vendors, it has fully implemented the "Green" bento initiative, and all bentos now sold at the Bookstore are all wrapped in biodegradable materials. Stop by and check out our delicious and earth-friendly foodstuff.