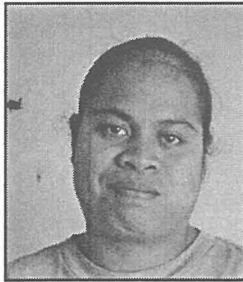


Alumni Notes

Class of 2007 Tracy Marcello



Earned her Associate of Applied Science (AAS) degree in Agricultural Science. After graduating, she was contracted to work at the Bureau of Agriculture for one year. Currently, she is the Administrative Officer at Helen's Reef Conservation, a post she has held since 2009. *Message: Study hard and don't*

give up!

Class of 2007 & 2008 Delina Remengesau



Earned her Associate of Science (AS) degrees in Education - Special Education and also Elementary Education. She began working at G.B. Harris Elementary in 2005, then transferred to Koror Elementary School where she has been teaching until now. *Message: Stay in school*

& study hard.

Class of 2009 Christopher Carlos



Earned his Associate of Applied Science (AAS) degree in Small Engine & Outboard Marine Technology. He worked as the General Manager for Palau/Wind Solar & Small Engine from 2010 - 2011. He is now in North Carolina getting trained to become a

Commercial Diver *Message: Time waits for no one, so get as much education you can to set your future.*

Alumni Notes showcases MOC & PCC alumni who are positive role models and contribute to the quality of life in their local communities. If you are that alumnus/alumna or know someone who is, please contact the PCC Development Office at telephone number 488-2471. We would like to feature you in future issues of the *Mesekiu's News*.

Mesekiu's News
Palau Community College
P.O. Box 9, Koror, Palau 96940

Welcome New Employees



Pasquana Iyekar

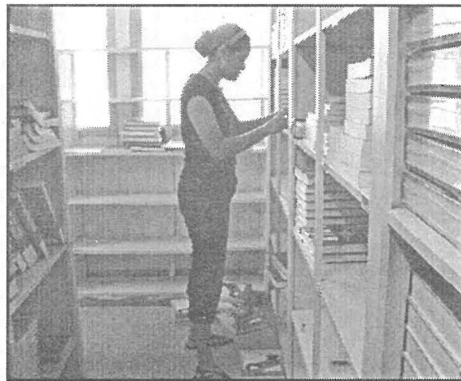
Welcome aboard to new Assistant Professor in Education, Ms. Pasquana Iyekar. She completed her BA in Education in 2000 at the University of Guam, and her MA in Education in 2010 from San Diego State University.



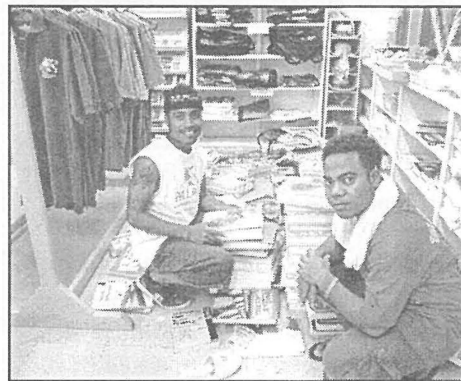
Victor Villamor

New Air Conditioning & Refrigeration Instructor Mr. Victor B. Villamor hails from the Philippines. He has a BS degree in Mechanical Engineering from Cebu Central Colleges in 1986. Welcome to PCC Mr. Victor B. Villamor.

Bookstore Readies for 2012 Semester



Valyn Aguon setting up the books in order on the shelves.



Ralph Kinu and Fredy Orhy helping with the organizing of books.

The bookstore has been busy getting itself ready for Spring 2012. On January 10, 2012 CWO workers Ralph Kinu and Fredy Orhy with Valyn Aguon, Office Clerk and

Adralene Remengesau, WIA trainee assisted Director Alvina Marciel in organizing the textbooks for the start of Spring 2012 Semester.

PALAU BEACH BUNGALOWS Peace & Relaxation Palauan Style!

Only \$40+tax daily rate
Private a/c bedroom&bath, living room, kitchenette
Beachside on big island of Babeldaob
Melekeok State
30 minutes from Palau International Airport
RESERVATIONS: 680.587.2533
Swim, snorkel, jungle walks, cultural sites
palaubeachbungalows@palaunet.com
www.palauparadise.com

Celebrating Birthdays

Joleen Ulengchong Jan 19
Arbedul Koshiba Jan 22

Happy Birthday To You!

Vacancy Announcement

- (1) English Instructor, Learning Resource Center
Salary range: \$14,802 - \$24,647 per annum
- (2) Math Instructor, Learning Resource Center
Salary range: \$14,802 - \$24,647 per annum
- (3) Financial Aid Counselor, Adm. & Financial Aid
Salary range: \$12,049 - \$20,607 per annum
- (4) Counselor, Student Life Office
Salary range: \$12,650 - \$19,479 per annum
- (5) Career/Transfer Counselor, Learning Resource Center
Salary range: \$17,300 - \$21,000 per annum
- (6) CHL Palau Outreach Educator
Salary range: \$12,653 - \$19,479 per annum
- (7) Researcher/Aquaculturist
Salary range: \$30,000 per annum

For application forms and information, please contact Karen Mobel at PCC Human Resources Office at 488-2470/71, ext. 227, email hr@palau.edu or download form at www.palau.edu

PCC is an Equal Opportunity Employer

FREE!!!



Palau Community College

MESEKIU'S NEWS

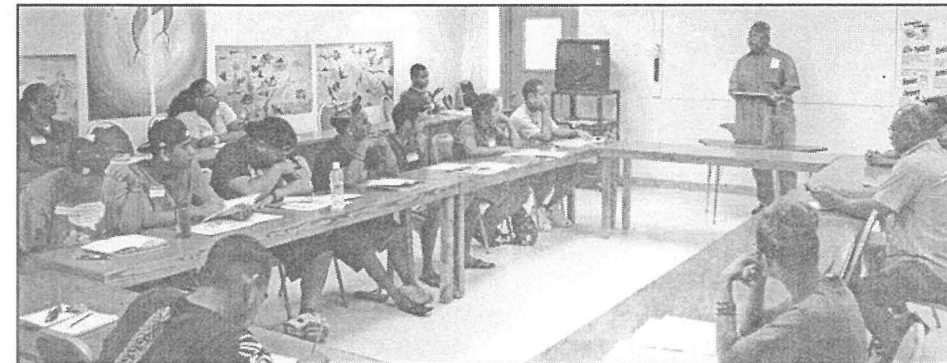


Friday, January 13, 2012

Weekly Newsletter

Volume 14, Issue 02

New Students Orientation



Dr. Tellei speaking to the new students during the orientation.

On January 05, 2012, New Student Orientation was held at the CE Training Room. Forty new students were accepted this 2012 Spring semester. Director Ngiralmu opened the session by welcoming the students followed by Dr. Tellei's special remarks and message of encouragement. He encouraged students to challenge their classes and do their best while also having

fun during their college years. He said PCC faculty and staff are here to help students succeed in their classes and encouraged students to enlist their assistance. Dean Daniel spoke to students next, informing them of the academic and non-academic student support programs & services available through Student Services Division.

Orientation cont'd on p.2

BOT Annual Organizational Meeting



L-R: Vice Chair Emesiochl, Dr. Roberts, Secretary/Treasurer Toribiong, VP Olegerii, Executive Assistant Ngiramengior, Student Trustee Umetaro, Reverend Kuarlei & Chair Bilung Salii.

The college's enabling legislation, RPPL 4-2, mandates the Board of Trustees to meet on the second Monday of each year to organize and to establish its calendar of

regular meetings. Accordingly, the Board of Trustees of Palau Community College held its annual organizational meeting on

BOT Cont'd on p.2

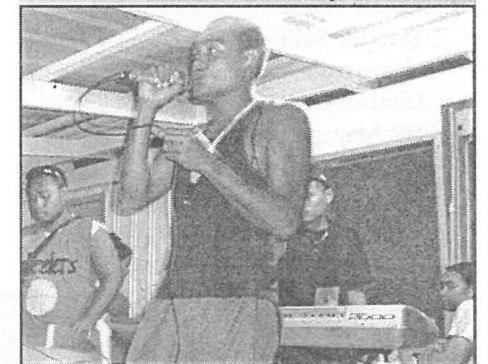
Palau Community College is an accessible public educational institution helping to meet the technical, academic, cultural, social, and economic needs of the students and communities by promoting learning opportunities and developing personal excellence.

Dorm Residents Countdown to 2012

Dorm residents were busy on New Year's Eve December 31, 2011. The fun filled evening, organized by dorm managers & Student Life Office included a singing contest, the best dressed (male/female) of the evening with many wonderful prizes.

The dorm managers would like to thank the following individuals for their generous contributions & gifts to the raffle drawing and prizes for the evening:

Countdown cont'd on p.2



Joseph Mangafir participated in the singing contest.



Eileen Sallel & Juliet Kandy in best dressed contest.

PCS Donates Computers

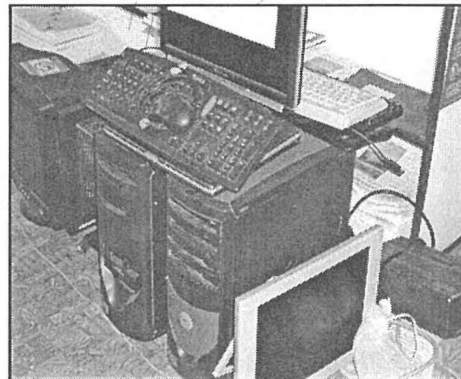
On January 06, 2012, Dean Chilton received computer donations from Palau Conservatory Society (PCS) Executive Director, Elbuchel Sadang. The donation consisted of 2 hard drives, 5 monitors, 4 keyboards and 1 laptop. The equipment will be tested

out and set up at the dormitories where residents will be able use to assist them in their studies.

Thank you PCS for your donations which will enhance students learning.



PCS Executive Director Elbuchel Sadang & Dean Chilton.



PCS donated computer equipment.

Countdown cont'd from p.1

- President Tellei - 5 pillows & bottle opener/key chain
- VP Olegeriil - 2012 calendar & coffee mug
- PNOCD Unit - 6 T-shirts, pants, bags & fans
- Sonia Beauty Shop - \$25.00 gift certificate (Two)
- Director Salii - 3 T-shirts, shorts, telephone radio alarm & 3 cd's
- Director Ueki - Picture ornament
- HR Manager Mobel - Pen, flash drive & 5 cd's
- BPS Deputy Director Olegeriil - water bottle, coffee mug, t-shirt & candies
- Account Technician Omelau - \$10.00 lunch certificate at PCC Bookstore
- FWS Coordinator Brel - \$10.00 air-time & spaghetti lunch certificate at PCC Bookstore
- ETS Office (Toto & Maile) - water bottle, pens & pencils
- Registrars Office (Lesley, Lourdes & TE) - pencils, pens, penholder & t-shirts
- Director Katosang - Airtime & bookstore lunch certificate
- Development Office (Dilubch & Adora) - 2 Gift certificate to PCC Bookstore, 5 water bottles, 3 mark it pads & 3 cigarettes.



Dorm residents having a great time and posing for the camera.

BOT Cont'd from p.1

January 09, 2012. During the meeting, with all members present and voting, the board elected to retain the same officers for CY 2012 as follows:

- Bilung Gloria G. Salii, Chairperson
- Minister Masa-Aki N. Emesiochl, Vice Chair
- First Lady Valeria Toribiong, Secretary/Treasurer
- Dr. Emais Roberts, Member
- Rev. Billy G. Kuartei, Member
- Ashley Umetaro, Student Trustee

The board also elected Minister Emesiochl to continue to serve on the College of Micronesia Board of Regents. He currently chairs the Board of Regents.

The regular meetings of the board are as follows:

- Jan. 23, 2012
- Feb. 27, 2012
- Mar. 22, 2012
- Apr. 19, 2012
- May 24, 2012
- Jun. 21, 2012
- Jul. 19, 2012
- Aug. 23, 2012
- Sept. 20, 2012
- Oct. 18, 2012
- Nov. 19, 2012
- Dec. 20, 2012

All meetings of the Board are open to the public provided the board is not discussing personnel matters, litigation or impending litigation with its attorney. If you wish to attend a meeting of the board, please call 488-2470 or 2471 for accommodations.

Orientation cont'd from p.1

VP Taro discussed the scholarships available for Agricultural Science students. The need for those who major in this field is great, and therefore the financial aid opportunity is great for those interested in getting into the Agricultural Science major.

Students went on a tour of the campus before meeting with their advisors for their respective majors.

BITS AND PIECES...

TAX REFUND

The Bureau of Revenue, Customs & Taxation Application for Refunds for Tuition/Contribution to Non Profit Organization is now available for pickup at the Development Office. Stop by and see Dilubch, Adora or Alvina to help you with your Endowment refund or call 488-2470/2471 ext. 252, 253.

NO PARKING ZONE

ATTENTION ALL STUDENTS, FACULTY & STAFF:

All vehicles that are parked illegally in the NO PARKING ZONES are subject to applicable penalties.

ADDITIONAL PARKING SPACES are located at the lower campus, near the track and field. Please utilize them. Your cooperation is appreciated.

NO PARKING ZONES

- * Under Mango Tree (Loop)
- * Double Parking
- * Handicapped Parking (unless with sticker)
- * Side of Bank of Guam & Snack Stop
- * ALL driveways

If you have questions about the parking, please don't hesitate to contact Jay Olegeriil or Todd Ngiramengior @ 488-2470 ext. 343 or 225.

News/Stories Wanted

MESEKIU'S NEWS welcomes stories/articles/announcements from students, faculty, and staff. Submission deadline is Monday at 4:30 p.m. in hard and electronic copies to adoraa@palau.edu, dilubchs@palau.edu, and alvinam@palau.edu.

Please call ext. 250/252/253 if you intend to submit your article after Monday or for more information.

Academic Calendar for Spring 2012

16 Weeks (16 Jan - 16 May)
1st 8 Weeks (16 Jan - 09 Mar) 2nd 8 Weeks (19 Mar - 11 May)

Date	Days	Event
January 02, 2012	M	HOLIDAY: New Year's Day
January 3 - 6, 2012	T-F	Placement Testing
January 05, 2012	Th	Freshmen Orientation
January 9 - 11, 2012	M-W	Academic Advising & Registration
January 12 - 13, 2012	Th-F	Late Registration
January 16, 2012	M	First Day of Instruction (for all 16 wks & 1st 8 wks)
January 16 - 18, 2012	M-W	Credit by Examination Period
January 16 - 20, 2012	M-F	Drop & Add Period (for all courses 16 wks & 1st 8 wks)
January 20, 2012	F	Last Day to Change to CR/NC & AUDIT Grading Options
January 21, 2012	Sat	First Day of Instruction for ALL Saturday Classes
February 09, 2012	Th	Mid-Term Period (for 1st 8 wk session)
February 16, 2012	Th	Last Day for ALL Withdrawals (for 1st 8 wk session)
February 24, 2012	F	Last Day to Remove Incomplete Grades for Fall 2011
March 5 - 9, 2012	M-F	Mid-Term Period (for 16 wk classes)
March 08, 2012	Th	Last Day of Instruction (for 1st 8 wk session)
March 09, 2012	F	Final Examination Period (for 1st 8 wk session)
March 12, 2012	M	Grades Due by 11:00am (for 1st 8 wk session)
March 12-16, 2012	M-F	Students' SPRING BREAK
March 15, 2012	Th	HOLIDAY: Youth Day
March 19, 2012	M	First Day of Instructions (for all 2nd 8 wk session)
March 19 - 20, 2012	M-T	Drop & Add Period (2nd 8 wk session)
March 19 - 21, 2012	M-W	Summer 2012 Pre-Registration
March 23, 2012	F	Last Day for All Withdrawals
March 24, 2012	Sat	First Day of Instruction for ALL Saturday Classes (2nd 8 wks)
April 02, 2012	M	PCC Charter Day
April 06, 2012	F	PCC Charter Day Celebration
May 04, 2012	F	HOLIDAY: Senior Citizen Day
May 11, 2012	F	Last Day of Instruction (for all courses 16 wks & 2nd 8 wks)
May 14 - 16, 2012	M-W	Final Examination Period (for all courses 16 wks & 2nd 8 wks)
May 16, 2012	W	Graduates Grades Due by 11:00am (for all courses 16 wks & 2nd 8 wks)
May 21, 2012	M	Grades Due by 11:00am (for all courses 16 wks & 2nd 8 wks)
May 25, 2012	F	Commencement Exercise
May 28, 2012	M	Last Day for Change of Grades

New Endowment Fund Donors



Josiafat U. Ibutirang

Josiafat U. Ibutirang, working at the Bureau of Public Safety as a Police Officer I walked into the Development Office and signed up to become an Endowment Fund Donor.



Wigson Yasuo

An alumni of PCC and now a member of the Endowment Fund, Wigson Yasuo is our newest member. He works at the Revenue & Taxation Office as a Tax Examiner. Welcome aboard.



Robert Ramarui

Business Assistant Professor Robert Ramarui recently joined the Endowment Fund in response to Dr. Tellei's \$1Million challenge.

If you are interested in becoming an Endowment Fund contributor, please contact the Development Office at 488-2470/2471 ext. 252, 253 and ask for Dilubch or Adora.