

Alumni Notes

Class of 1984 (MOC)

Elizabeth Keptot Ngirakesau



1984 with a certificate in Food Service. She has been working for MOE - Koror Elementary School for the past 24 years. Enjoyed taking food service classes from instructor Tosiwo Wasisang who was an inspiration to her.

Class of 1988 (MOC) & 2008 PCC

Lanson Doktok



1988 - Earned a certificate in General Electronics then completed an Associate of Science degree majoring in Criminal Justice in 2008 Summer. He has been working at the Bureau of Public Safety

in the Patrol Division since 1989. He enjoyed the courses that he took, especially learning new skills that benefit him.

Class of 1994 (PCC)

Russell Roman



1994 - Earned a certificate in Construction. Has been working at CIP for the last 9 years as Inspector I. Has been an active participant and supporter of sports (track and field).

Alumni Notes showcases MOC & PCC alumni who are positive role models and contribute to the quality of life in their local communities. If you are that alumnus/alumna or know someone who is, please contact the PCC Development Office at telephone number 488-2471. We would like to feature you in future issues of the *Mesekiu's News*.

Mesekiu's News
Palau Community College
P.O. Box 9, Koror, Palau 96940

Celebrating Birthdays

Michael Siliang	Jan 11
Willy Wally	Jan 11
Harline Haruo	Jan 15
Suzette Hinojales	Jan 15

Happy Birthday To You!

PCC - Based Scholarships Re-Opens

Four PCC - Based Scholarships are now available for students to apply for: Deloitte & Touche (for Business Accounting Majors only), Pierantozzi, Roman-Tmetuchl and Shell Company Scholarships are available for pick up at the Development Office. Scholarship deadline is January 31, 2011. Please stop by and see Dilubch or call 488-2470 ext. 253.

Mandarin Course Offered thru PCC - CE

The PCC - Continuing Education Office will be holding a 36 hrs of Mandarin class to begin on Jan. 17, 2011. If you are interested in taking Conversational Mandarin, please contact the CE Office at 488-6223 for more information. Please stop by the CE office to sign up for this class, as space is limited.

Spring 2011 Cont'd



School of Technical Education students & Advisor



Students in Student Life waiting to see advisors.



Waiting in line to pay registration fee.

PCC CAN HELP YOU UPGRADE YOUR SKILLS TO BOOST YOUR CAREER!
COME TO PCC!
Call 488-2470

DONORS
We can help you process your refund applications.

Fill the form and bring your last payday's check stub for 2010 to the Development Office.
Call 488-2470 ext. 253, 252, 251

Feliz Skin Care
SPECIAL 50% OFF
extended til
Jan. 15, 2011.
Call 488-8889 for an Appointment or Get Gift Certificates for Loved Ones

PALAU BEACH BUNGALOWS
Peace & Relaxation Palauan Style!
Only \$40+tax daily rate
Private a/c bedroom&bath, living room, kitchenette
Beachside on big island of Babeldaob
Melekeok State
30 minutes from Palau International Airport
RESERVATIONS: 680.587.2533
Swim, snorkel, jungle walks, cultural sites
palaubeachbungalows@palaunet.com
www.palauparadise.com

Vacancy Announcement

- (1) Computer Technician, Computer Services Office
Salary range: \$12,049 - 20,607 per annum
- (2) Director, Human Resources Office
Salary range: \$18,730 - 28,833 per annum
- (3) Director, Finance
Salary range: \$18,730 - 28,833 per annum

For application forms and information, please contact Karen Mober at PCC Human Resources Office at 488-2470 /711 ext. 227
PCC is an Equal Opportunity Employer

FREE!!!

Palau Community College



MESEKIU'S NEWS



Friday, January 14, 2011

Weekly Newsletter

Volume 13, Issue 2

2011 Spring Semester

January 06, 2011 was the New Student Orientation held at the Continuing Education Training Room. Twelve incoming students attended. The students came from Yap (3), Chuuk (1), Pohnpei (1) and Palau (7). President Dr. Patrick



New Students with Continuing Student Tour guides

Tellei gave the welcoming remarks in which he discussed the history of PCC and how it came to be what it is today. He also mentioned that the PCC experience should not only be educational but

also fun. He encouraged students to get help from the counselors and to utilize the Student Learning Center, receiving help from the instructors and tutors. Registrar Adachi represented the Student Service and informed students about the different



Students in College of Arts & Science with Advisor

Student Services Divisions, and each division's support and services to the students were. Financial Aid Session with Counselor Siliil was where one learned about what to expect from Financial Aid,

Cont. Spring 2011 pg. 3

Faculty Gets Updates For Assessment & Accreditation

Faculty met with Dean Alvina Timarong and VP Jay Olegeriil to discuss changes within PCC. VP Olegeriil discussed the personnel policies including merit evaluation, faculty salary, and pension plan for non-Palauans. The Acting ALO, Deikola Olikong explained the status of the Follow-Up Report. At the moment, the Chairpersons for each committee have been meeting with the Executive Committee regularly and will soon have the Follow-Up report ready for the Board's review. Dean Timarong informed the faculty that the board has approved the Institu-

tional Learning Outcomes. She stressed the importance of listing course learning outcomes (CLO) on the syllabi so students are familiar with them at the onset. This will ensure effective evaluations of the instructors and the courses.



Faculty meeting with VP Olegeriil & Dean Timarong

BOT Annual Organizational Meeting

The PCC Board of Trustees held its annual organizational meeting on Monday, January 10 (second Monday of January) to elect its officers, elect its representative to College of Micronesia Board of Regents and to establish its annual calendar of regular meetings and activities. The Board also adopted the membership and chairmanship of its standing committees for 2011, scheduled annual performance evaluations for the Board and the President, and completed their Financial Disclosure Statement. The Board will hold a special meeting on January 20 to review the draft Follow-up Report to the Accrediting Commission for Community and Junior Colleges. Final review and action on the report will take place during the February regular meeting prior to submission in March.

See BOT Calendar and photos on Page 2

STUDENT ID CARD

You can get your Student ID card at Student Services starting Jan. 24, 2011. Please bring your class schedule to Student Services.
Hours: 9am -11am
1pm -3pm

Palau Community College is an accessible public educational institution helping to meet the technical, academic, cultural, social, and economic needs of students and communities by promoting learning opportunities and developing personal excellence.

Welcome to New Dorm Residents

PCC Dorm welcomes six additional students, five from the State of Yap and one from the State of Chuuk. By the looks



1st Row (l-r) Jesus, Pedreama, Stephen
2nd Row (l-r) Julius, Jeremiah, George

on their faces, these students are excited to be here. Brothers, Julius and Jeremiah Buchun, and Geroge Yanruw Tun are from the main island of Yap. Jesus Tewarimal and Stephen Mara are from the outer islands of Yap. And the one lady who hails from Chuuk is Pedreama Rechy. All six had big grins after their initial tour with Ephraim, Dorm Manager. WELCOME TO PALAU COMMUNITY COLLEGE. Here, according to President Tellei, "one can indeed embark on a journey of quality education."

Pacific Adaptation to Climate Change (PACC)

The Pacific Adaptation to Climate Change (PACC) met on January 6, 2011 to continue initial work of the project to be implemented in Ngatpang State. The Ngatpang State project will serve as the model project to reduce climate change risk. The project will eventually expand to other areas of Palau.

"Ridge to Reef" project explores different innovative ways to save the taro patches that have been affected by salt water intrusion. PACC is currently engaged in activities that will help reduce vulnerability of climate change. These activities include socioeconomic assessment, identification of salt tolerant

Board Cont'd. Calendar of Meetings & Activities

- Jan. 10 Annual Organization Mtg
- Jan. 20 Special Mtg
- Feb. 24 Regular Mtg
- Mar. 24 Regular Mtg
- Apr. 21 Regular Mtg
- May 26 Regular Mtg
- Jun. 23 Regular Mtg/ Board Retreat
- Jul. 21 Regular Mtg
- Aug. 18 Regular Mtg
- Sept. 15 Regular Mtg
- Oct. 20 Regular Mtg
- Nov. 22 Regular Mtg
- Dec. 15 Regular Mtg



Bilung Gloria
G. Sali - Chair



Masaki N. Emesiochl - Vice
Chair



Valeria Toribiong
Secretary /
Treasurer



Buk Emil
Ramarui -
Member



Dr. Emais
Roberts -
Member



Michelle Ueda -
Student Trustee



PACC Members meeting in Conference Room

Palau Natural Resource Council

The Palau Natural Resource Council (PNRC) held its first meeting for the year on Jan. 06, 2011, to reactivate and reorganize itself. PNRC, created by Executive Order 231 is made up of agencies from governmental, non-governmental and private sector. Its function is to coordinate



PNRC members

activities and initiatives that promote protection and conservation of oil, water, prime and unique farmland, woodlands, wildlife, energy and other renewable terrestrial resources. Members of PNRC elected new officers for the year: Thomas Taro, Chair - Palau Community College; Fred Sengebau, Vice Chair - Bureau of Agriculture; Madelsar Ngingas, Secretary - PALARIS.

GI Bill Available at PCC

The College offers the GI Bill financial assistance to retired or honorably discharged US military personnel who enrolls at PCC. Funded under the Veterans Administration (VA) program, it's purpose is to make obtaining a college degree affordable after a career with the military. It covers tuition, fees, room and board. For more information about the GI Bill or other educational financial assistance available at Palau Community College, please contact the Director of Admissions & Financial Aid - Dahlia Katosang at 488-2741 ext. 265.

"Historical Perspective of Palau"

presented by
President Johnson Toribiong,
Jan. 20, 2011 6:30pm - 7:30pm
PCC Assembly Hall

BITS AND PIECES...

ADULT HIGH SCHOOL PROGRAM

2011 Airai Spring Semester
PCC Adult High School at Airai State to begin this month.

Contact the following persons to register for the program.
Laura Mangham 488-0826
Hedrick Kual @ 488-2471 ext. 267
Debolyn Arurang @ 587-3511

TAN SIU LIN PCC LIBRARY

HOURS OF OPERATION:
M - Th 8:00am - 8:00pm
Friday 8:00am - 6:00pm
Saturday 9:00am - 6:00pm
Sunday CLOSED

Thank you for your patronage. We are here to serve the students and the community.

Annual Report Due Jan. 25, 2011

ANNUAL REPORTS TO BE SUBMITTED BY JAN. 25, 2011

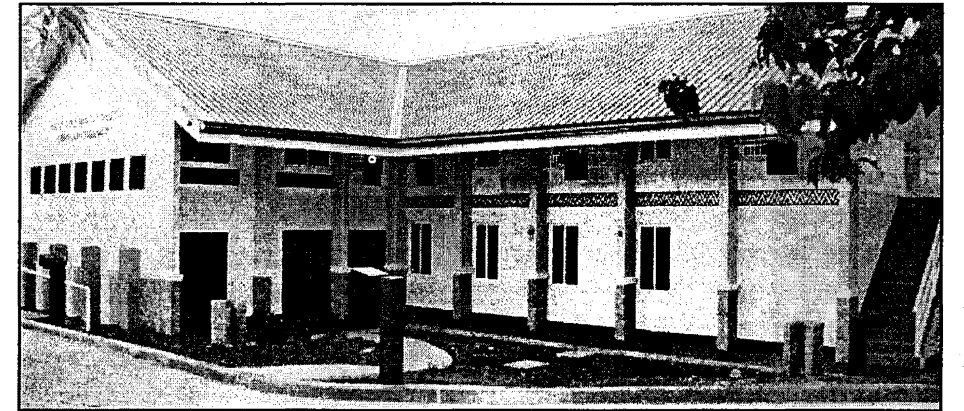
Hard and Electronic copies to the Development Office
alvinam@palau.edu

Wanted

MESEKIU'S NEWS welcomes stories/articles/announcements from students, faculty, and staff. Submission deadline is Monday at 4:30 p.m. in hard and electronic copies to aduraa@palau.edu.

Please call ext. 252/253 if you intend to submit your article after Monday.

PTHSE to Open this Spring 2011



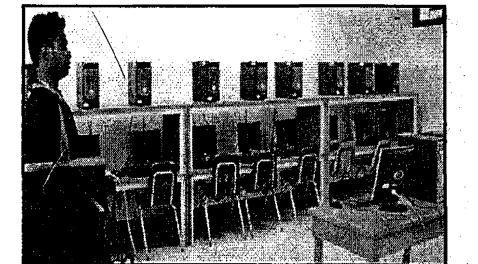
Palau Tourism & Hospitality School of Excellence (PTHSE)

A commercial kitchen, a restaurant, a bar, an alfresco area, a mock hotel suite, reception and concierge areas, and two classrooms. The first educational & training arena for PTHSE students to learn - to listen - to express - to experiment - to create - and to engage in numerous industry-based projects that support and enhance career growth. A collaborative effort between PCC, Belau Tourism Association, and the Ministry of Education.

Open Lab Available

The Open Lab, located in Rm #60 will be ready for students on Monday. Students are encouraged to come and use the computers to do work or to print documents and get assistance from the lab assistants. The open lab is not connected to the internet, therefore; should you require to upload your assignments to your instructor, you will need to save your work and go to the Online Lab to upload your work. Hours of operation for the Open Lab will be M - F at 10:00am - 12:00pm, 2:00pm - 4:00pm, and 6:00pm - 8:00pm. Thanks to the GEEK Squad who will be manning the Open Lab. But a big THANK YOU to E-Van Ongerung for tak-

ing time out this Christmas break to come and volunteer setting up the lab. His hard work really has demonstrated his willingness to help out PCC.



Open Lab featuring 17 computers

Spring 2011 Cont'd

one needed to do to maintain eligibility for financial aid assistance. All in all, the New Student Orientation went well, with all students going over the catalog with their advisor, going over each individual program and mapping out their educational career at PCC. Thanks to continuing students who were the tour guides for the campus tour. On Monday, Jan. 10, registration began. As of Wednesday, 530 students have registered. It appears that this semester, enrollment may exceed 647 from last Spring. While classes will begin on Jan. 17, Late Registration and add/drop period will continue until the 21st.

Cont. Spring 2011 Photos on Pg. 4

New Member of PCC Endowment

Welcome aboard to new endowment donor, Antonnette O. Merur. She is a nurse in the Bureau of Clinical Services at Ministry of Health. Thank you for your support.

