

VACANCY ANNOUNCEMENT

Position Title: Librarian
Salary: \$16,010.00 - \$18,730.00 per annum
depending on qualifications

Example of Duties:

Provide professional library services to the College and its users, including, but not limited to assisting individuals and groups in locating or obtaining library materials.

Maintain and update the library circulation and reference collections of print resources such as general and technical books, serial publications, documents, and other materials; maintain and revise, as required, index, control system for general, technical books and other library printed materials.

Assist in selecting, ordering, cataloging, classifying, processing of general/technical books, periodicals, and other printed materials. Communicate information to students, faculties, and public regarding library activities such as services/facilities available, procedure and policies, develop and implement various library orientation programs to users. Assist faculties and other users in developing bibliographies, promotions, outreach services and other activities. Select, direct, train and supervise student library workers. Assist in the preparation of the library budget, serve on college committees as assigned and perform other related duties as assigned by the supervisor.

Minimum Qualification Requirements:

Bachelor or master's degree from an accredited higher education institution in library science or related field. Highly experienced and knowledgeable in skills required to perform the duties and responsibilities of a community college librarian. Previous successful library experience in a higher education institution preferable.

General Information:

Application forms can be obtained from the College's Human Resources Office. Send completed application with transcript, resume, and verification of previous employment, if any, to: **Palau Community College, Human Resources Office, P.O. Box 9, Koror, Palau 96940. Telephone number 488-2471, ext. 228.**

PCC is an equal opportunity employer.

 **Mesekiu's News**
Palau Community College
P.O. Box 9
Koror, Palau 96940

Host Family Needed for New JICA/JOCV Volunteer

A new JICA/JOCV volunteer, Ms. Shiomi Hata, will be arriving in Palau on July 10 to replace Reiko Kamamura who has just finished and returned to Japan. Ms. Hata will be working with Dr. Joel Miles with the PCC Agriculture program. Palau Community College is currently looking for a host family to house the new JICA/JOCV volunteer. Ideally, the host family would be located at a walking distance from the College for commuting convenience of our new volunteer. If you are interested or know a family who may be interested, please contact Karen Mobil at the PCC Human Resources office at telephone number: 488-5373/5370 for detailed information.



PCC currently has two JICA/JOCV volunteers, one with the agricultural science program and the other helping with the Japanese language program. Senior JICA/JOCV volunteer Kimiko Teshima (seated-left) is one of the two JICA/JOCV volunteer helping with the new Japanese language program at the college. PCC President Patrick Tellei is standing-left.



Palau Community College

MESEKIU'S NEWS

FREE COPY

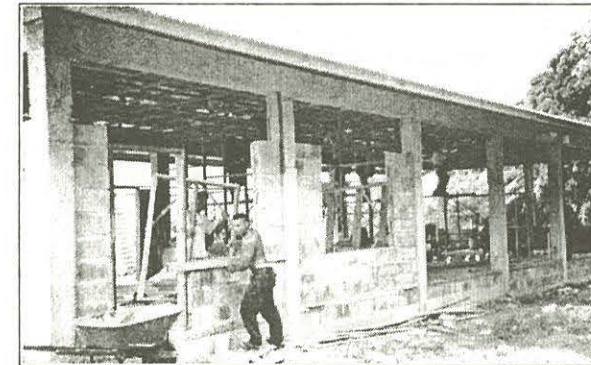


Friday, June 8, 2001

Weekly Newsletter

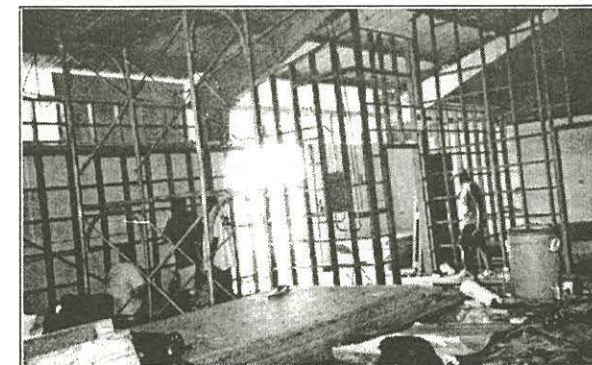
Volume 3, Issue 23

Construction of Day Care Center and Orchestra Room Ahead of Schedule



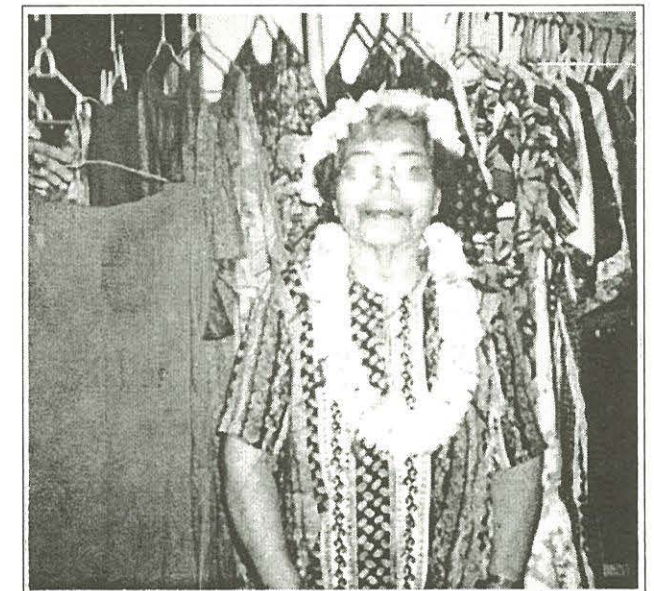
The much anticipated day care center is slated to be finished by the end of July, ahead of schedule. The construction of the day care center is a joint effort by the Ministry of Health, Palau Community Action Agency, and Palau Community College. In a memorandum of understanding between the three agencies, it was agreed that MOH and PCAA will provide funding for the project while PCC provides the site and does the actual construction. The construction work of the center is being done by PCC Construction Technology students and maintenance staff with the help of a private contractor.

The day care center will provide much needed services to employees and students with children.



PCC maintenance staff converting the old media office into an orchestra room. The orchestra room will be used by instructor Howard Charles for his music classes. Construction work on the orchestra room is slated to be finished around the same time as the day care center.

PCC-Cooperative Research and Extension Graduates 14 from Aimeliik State



Dirraii Yosko Ngiratumerang spoke on behalf of the program participants at the graduation ceremony that was held at the Ngerkeai Community Center in Aimeliik on May 31.

(Full Story on Page 3)

CONGRATULATIONS
to Mario Katosang, PCC Vice President of Education and Training on his nomination and confirmation to be the Minister of Education.

Next Issue:

PCC Mesekiu Secures Sportsmanship Trophy from 2001 Inter-Department Softball League.

PCC Library Tech Attends 10th Pacific Science Inter-Congress in Guam

The Library Technician, Ms. Imengel N. Mad, was in Guam earlier this month to attend the 10th Pacific Science Inter-Congress. She co-presented with Simeon Adelbai of the Belau National Museum, doing a poster presentation that describes an on-going collaborative project between the Palau Community College (PCC) Library and the Belau National Museum (BNM).

The project, funded by two-year Institute of Museum and Library Services (IMLS) National Leadership grant will enhance access to the BNM Media Collection, by making the Media Collection images more accessible through the integration of the PCC Library's online catalog with the BNM web site. With the integration, a much wider audience will be reached, and mishandling of the original images will be significantly reduced.

Librarians play a vital role in not only maintaining and developing collections and enhancing information access for the benefit of scholars in both the natural and social sciences but also have an impact upon the role that libraries do or could have in the lives of the Pacific people.

Richard H. Hart is New Chancellor and CEO of Loma Linda University

The Loma Linda University Board of Trustees appointed Richard H. Hart, MD, Dr.PH, on February 5, 2001, as the chancellor and chief executive officer of Loma Linda University and executive vice president for University affairs of Loma Linda University Adventist Health Sciences Center. In this new position, Dr. Hart reports to B. Lyn Behrens, MBBS, president and chief executive director of Loma Linda University Adventist Health Sciences Center. Dr. Hart is responsible for directing the University's day-to-day operations. He is currently dean of LLU School of Public Health and will retain this position until a new dean is appointed.

Dr. Hart is a 1970 graduate of Loma Linda University Schools of Medicine and Public Health with a medical and master of public health degrees.

In 1972, he accepted a position as head of the Community Health Department of the Kilimanjaro Christian Medical Centre in Moshi, Tanzania. In 1974, he began work for the government of Tanzania in the Ministry of Health, and served as chief of party and maternal and child health consultant for the United States Agency for International Development. His responsibilities included developing a national maternal/child health program for the country.

After returning to the United States in 1976, Dr. Hart completed his doctor of public health (DrPH) degree and preventive medicine residency at Johns Hopkins University, Baltimore, Maryland, and accepted a position in the LLU School of Public Health as assistant professor of international health. In 1978, he was appointed chair of the School of Public Health department of health sciences-a position he held until 1982.

PCC-CE Public Announcement

Palau Community College in conjunction with NBK Corporation, Japan International Corporation Agency and Japan Overseas Corporation Volunteer offers the basics of outboard motor engines. If you are a boat operator, own an outboard motor boat or want to own one, this is an opportunity for you. Learn the basics about outboard motor engines. You will save money in the long run with the high cost of maintenance. The skills and knowledge you learn could also be helpful to you in case of emergencies.

The class will cover the following: understanding of outboard motors; model differences, performance, strengths, parts, lower unit; water pump, oil seals, gear, identification of parts and numbers, engine problems, malfunctions, adjustments of carburetors and timing, electric parts, and emergency procedures.

Classes will be held on two consecutive Saturdays, **June 16 and June 23 from 8:00 am to 12:00 pm or 1:00 pm to 5:00 pm.** You can attend the morning or the afternoon session. The cost is \$20.00 per person. Arrangements can be made for classes to be offered in the other states of Palau.

For more information and registration, please contact *Continuing Education Office at 488-2471, ext. 237.* Seats are limited to a maximum of 15 participants per class so call today.

Additional Classes to be Offered

1. Building Office Skills- Learn basic skills relevant to office management.
2. Maritime Observer Training - Learn navigational skills, fish sampling and record keeping.
3. Email/Internet Training - Basic skills on how to use E-mail and the Internet.
4. Self-defense - Learn self-defense techniques & develop the proper attitude and discipline toward life.
5. Boating Safety Training - Understanding boating regulations, rules of the water, and the skills to operate a boat safely in Palau.

Dr. Hart directed the community medicine program for the University's School of Medicine from 1982 to 1986. In 1986, he was appointed professor and chair of the new department of preventive medicine in the School of Medicine, and in 1990, was named dean of the School of Public Health.

Over the past 15 years, through his commitment to service learning and community involvement, Dr. Hart led in the development of Students for International Mission Service (SIMS) and Social Action Community (SAC) Health Systems. He is president of Adventist Health International (AHI), a corporate entity within the family of Seventh-day Adventist Church organizations. Based at Loma Linda University, AHI is designed to strengthen the management and professional activities of Adventist health service in developing countries.

Dr. Hart and his wife, have three daughters- Chandra, Briana, and Kari- and three grandchildren.

RETENTION WEB PAGE

PCC Retention Office, Tel.#: 488-2471, ext. 247

All ROP Employees Invited to Join Endowment Club

Palau Community College continues to invite all employees of the public and private sector to join us in the PCC Endowment Fund Contributors' Club. Donate up to 10% of your taxable income every year and receive a full refund as PCC is a public non-profit organization. For your information, more than 100 PCC employees have been on this program for the past three to four years. **Last year, we were joined by five employees of the Palau National Government and 15 employees of Aimeliik Elementary School as well as Aimeliik State Government.**

Upon joining, they challenged all their counterparts in the government and school system to follow, however, their challenges have remained unanswered thus far, with one exception. **Maris Stella School teachers as well as their principal Mr. Felix Okabe (a former PCC Trustee) joined the Endowment Club this year!** Indeed the club gets bigger and we want to increase it even more. Therefore, we continue to invite all employees to join this worthy cause. Because the purpose of the PCC Endowment Fund is to ensure the financial viability of Palau's only community college, your membership means you play an important role in the future of higher education for Palau.

By enrolling in the Endowment Club, you contribute whatever amount you like and are eligible to receive up to 10% of your taxable income at the end of the year. In other words, you donate to a most worthy cause and get your money back! This is truly a win-win opportunity so we encourage all employees to join the club today. Join us and secure the future of Palau Community College, OUR COLLEGE, for our children and their children. **Together, we can make a difference!**

To enroll in the PCC Endowment Contributors' Club or to get more information about the PCC Endowment Fund or other programs at PCC, call

Jay Olegeriil or Armstrong Debelbot at PCC telephone number 488-2470/2471.

They will be very happy to assist you.

PCC-Cooperative Research & Extension Graduates 14 in Personal Sewing from Aimeliik State



Graduates in the PCC-CRE Personal Sewing training pose with PCC President Patrick Tellei (standing -4th from left) and PCC-CRE Vice President Anita Suta (standing-far right).

A short ceremony to award certificates of completion to fourteen women who participated in an 8-week training on Personal Sewing was held on May 31 at the Aimeliik Community Center in Aimeliik. Guests included Aimeliik Governor Demei Obak, Speaker Abina Etpison, members of the Aimeliik legislature, Speaker Robert Ngireblekuu of Airai state legislature, PCC President Patrick Tellei, Vice President Anita Suta, PCC Development Director Jay Olegeriil and CRE staff. The remarks delivered by the guest speakers were all resoundingly appreciative of all the PCC-CRE training endeavours that have brought such trainings to almost all of the states of Palau. It was encouraging to both participants and program providers.

The Personal Sewing training is an on-going PCC-CRE program geared to assist interested individuals and families with basic sewing skills that will enable them to avoid buying costly ready-made clothes and the high costs charged by the local tailor/dress shops. Furthermore, the skills acquired from such training can be used as an income generating activity by sewing and selling the finished product. If you are interested in finding out more about the PCC-CRE Personal Sewing program and other programs like it, please contact Seba Tutii at 488-4983.

Academic Calendar Summer Session 2001

June 4-8	(M-F) Late Registration (Drop & Add Period)
June 18-22	(M-F) Mid-term Period
June 22	(F) Early Warning Progress Report
June 22	(F) Last Day to Remove Spring Incompletes
June 29	(F) Last Day for All Withdrawals
July 9	(M) Holiday: Constitution Day
July 13	(F) Last Day of Instruction
July 16-17	(M-T) Final Examination Period
July 23	(M) Grades Due (End of Summer Session)