

Alumni Notes

Class of 1988 (MOC)

Clement Kazuma-



1988 MOC graduate with an Associate of Science in Electrical Technology. Kazuma who graduated with top honors was the class valedictorian. He is the Director of Physical Plant at PCC.

Class of 2002 & 2003 (PCC)

Valentina Omelau -



2002 PCC graduate with an AS degree in Education-Early Childhood, and 2003 graduate with an AS degree in Education-Special Education. Omelau who

is a classroom teacher for G.B. Harris Elementary School won the 2010 "Teacher of the Year" award for her school.

Class of 2005 (PCC)

Mayleen Rdechor-



2005 PCC graduate with an AS degree in Criminal Justice. Rdechor is a teacher at the biggest high school in Palau, Palau High School.

Alumni Notes showcases MOC&PCC alumni who contribute to the quality of life in their local community and are positive role models for other PCC students to emulate. If you are that alumni or know someone who is, please contact the PCC Development Office at telephone number 488-2471. We would like to feature you in future issues of the *Mesekiu's News*.

Mesekiu's News
Palau Community College
P.O. Box 9, Koror, Palau 96940

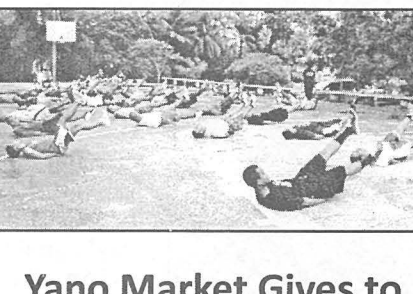
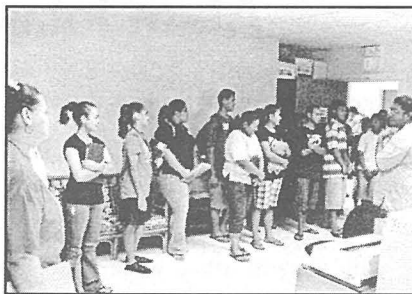
Celebrating Birthdays

Alex Gachalian June 16



Happy Birthday To You!

Some Faces Around Campus this Summer



OPEN Season for Endowment Fund
New Members Registration Ongoing

This week we welcome new member Hosei Setsuo from PCAA. To find out how you can join the hundreds who are already giving to the Endowment Fund through paycheck allotments, contact PCC Development Office at 488-2471, ext. 253. If you can't come to the office, contact the office at 488-2471, ext. 253 and we'll send someone to find you.

Palau Beach Bungalows
Private a/c, bedroom & bath, living room, kitchenette
Beachside on Babeldaob Island, Melekeok
State 30 minutes Airport
RESERVATIONS 680.587.2533
palaubeachbungalows@palaunet.com

PCC Graduates for HIRE!
See Vincent Ito or call him at 488-2470-71

Yano Market Gives to Dorm Students



PCC thanks Yano's Market for their donation of 60+ lbs of cucumbers and egg plants earlier this week to the cafeteria for dorm students' meals.

Vacancy Announcement

- (1) Dean, Academic Affairs
Salary range: \$21,000-\$33,730 per annum
- (1) Assistant Director, Educational Talent Search
Salary range: \$18,000-\$22,000 per annum
- (1) Accountant/Supervisor, Business Office
Salary range: \$12,049-\$20,607 per annum

For application forms and information, please contact Karen Mobil at the PCC Human Resources Office at 488-2470/71, ext. 227.

FREE!!! Palau Community College MESEKIU'S NEWS



Friday, June 11, 2010

Weekly Newsletter

Volume 12, Issue 24

440+ Sign-Up for Summer Classes

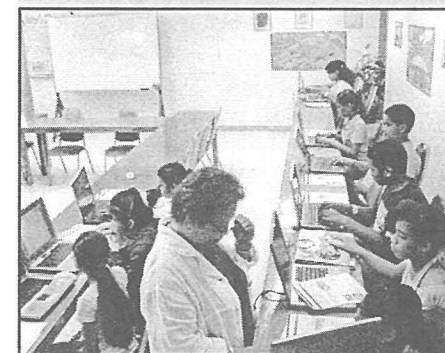


PCC President Patrick U. Tellei (c) is surrounded by students of the TRIO Upward Bound Program for a photo-op on the first day of summer session. The Upward Bound program and other TRIO programs at PCC incorporate college classes into their summer sessions to help their college-bound students get an early intro on college level instructions.

Four hundred forty-four students have signed up for summer classes as of yesterday, according to numbers from the Office of the Registrar. With late registration still

being processed, it is shaping up to be another busy summer in terms of enrollment. The summer enrollment which is normally in the three hundred range has

CE Summer Programs Remain Popular



CE Keyboarding class for kids.

Classes in Keyboarding, English Reading/Writing, Mathematics, and Environmental/Marine Science have been identified as the needed classes to be offered through the PCC Continuing Education Summer Kids Program. According to the Dean of

Continuing Education Willy Wally, the course selection is such that it helps 5th-8th graders reinforce their skills in these core subjects. Wally said that despite the overwhelming demand, facility limitations only allows them to accept one hundred participants, and he hopes to be able to accommodate more next summer.

In addition to its academic offerings, the Continuing Education office, in partnership with the Koror State Government, and the Workforce Investment Act office also sponsors a Summer Youth Program which teaches students about traditional Palauan art skills (spear-making, storyboard carving, basket weaving, and chanting).

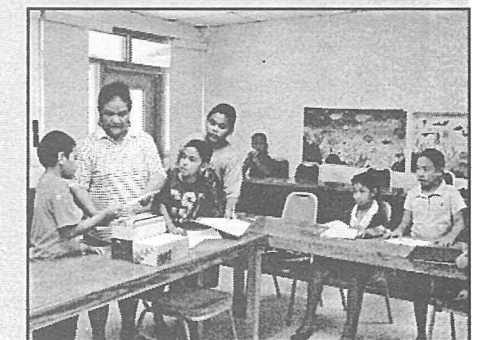
consistently topped four hundred for the second straight year.

The four-hundred mark could very well become the norm for summer semesters if the trend continues with more and more graduating high school seniors electing to begin their college studies immediately after high school, which is during the summer, instead of waiting for fall semester.

Another reason for the high numbers could be attributed to the TRIO programs at PCC such as the Upward Bound and the Upward Bound Math & Science which serve high school students. As part of their services to prepare graduating high school seniors to succeed in college, these programs now mandate seniors to enroll in PCC summer classes. Majority of the summer TRIO program summer enrollees continue or to become full-time students in the fall.



Upward Bound Math & Science students pose for a group photo with program staff and instructors during the summer orientation held earlier this week.



PCC Instructor Heads Organizing Body for Regional Nursing Conference

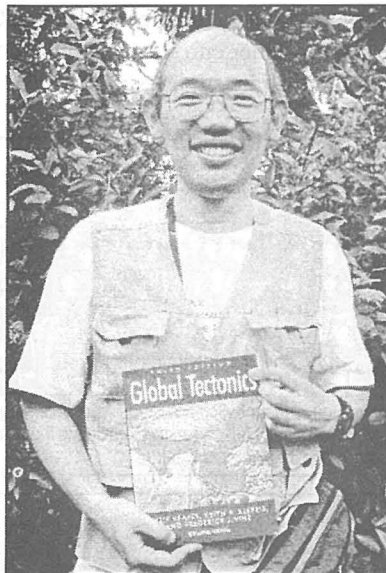


PCC instructor Terry Ngirmang (2nd-right) at last year's regional nursing conference.

Terry Ngirmang who heads the Nursing Program at PCC was appointed by members of the Palau Nurses Association (PNA) to lead the organizing committee responsible for preparing for the upcoming American Pacific Nursing Leaders Council (APNLC) conference slated to be held in Palau from June 14-18.

Ngirmang said that the PCC Nursing program is a chapter member of the Palau Nurses Association and therefore all of her

Japanese Research Scientist Gives to Library



Japan Agency for Marine-Earth Science & Technology (JAMSTEC) research scientist Yasushi Ishihara who visits Palau every year stopped by at the library recently to make a donation. He donated a book titled "Global Tectonics", a standard science textbook that could be used as reference for science majors. PCC thanks Ishihara for his donation and looks forward to his next visit.

students and other program instructors will be involved in the organization of the conference.

Ngirmang also said that it will be a great learning experience for her, other instructors and her students as they can meet other nursing leaders and professional from around the region and share

experiences.

One hundred fifty nurses and other health professionals from around the region are expected to attend the conference.

Participants from Hawaii, Marshall Islands, American Samoa, CNMI, Guam, FSM, Fiji, Okinawa-Japan as well as representatives from the UN-World Health Organization are confirmed to attend.

Former Student Now Counsels Students



Glenda "Tau'O" Ngirmeriil

Glenda "Tau'O" Ngirmeriil who graduated from PCC eight years ago with an AA degree in Liberal Arts was hired last week by the college to work as one of the counselors for the Office of Student Life.

Ngirmeriil who graduated from University of Hawaii- Manoa in 2005 with a BA in Sociology and worked for the State of Hawaii's Department of Human Services for four years, will help students map out and successfully complete their academic careers at PCC.

Ngirmeriil said she will be working mainly with students in the Arts and Science program but welcomes all students to stop by her office for a chat about their academic progress or challenges.

TSL Library Summer Activities

- ✓ Internet Searching/EBSCO Training
- ✓ Online Catalog Training
- ✓ Gmail/Email Set-Up

Training begins June 16 - End of July on every Wednesday & Friday from 1:00-4:00 pm. Training is for ages 12 & Up. Call 488-3540 and talk to Tanya Ngirkuteling or Jelene Ulenchong for more details.

Continuing Education Classes

FREE Session on Constitutional Law of Palau

Instructor: Kevin Bennardo, Court Counsel to the Supreme Court of Palau

Topics

Class 4:

Article IV, Section 4: Right of Security from Entry, Search, and Seizure
Article IV, Section 6: Warrant Requirement for Search and Seizure

Class 5:

Rights of the Accused

- Section 6: No Ex Post Facto Punishment
- Section 7: Presumption of Innocence
- Section 7: Right to Speedy Trial
- Section 7: Right to Examine Witnesses
- Section 7: Right Against Compelled Self-Incrimination
- Section 7: Right to Counsel

Class 6:

Article IV, Section 10: Freedom from Excessive Punishment

Wrap-up

Class Schedule: One hour every Wednesday night from 6 pm to 7 pm. for six weeks starting the week of May 24th and ending the week of June 28th. All classes will be held at Continuing Education Training Room.

BITS AND PIECES...

SCHOLARSHIPS & INTERNSHIPS

Scholarship & Internship Opportunities...

The office of the Micronesia Challenge is offering thousands of dollars in scholarships as well as internship opportunities for qualified students and individuals. For details, stop by the PCC Development Office or contact: The Micronesia Challenge Regional Office, P.O. Box 4040, Koror, Republic of Palau 96940. Telephone: 680-488-8008; Fax: 680-488-8003

HONEST BLUU

Custodian Finds & Returns \$\$\$...



PCC Custodian Bluu Ongiil found a graduation money envelope on campus during last Friday's graduation day "stampede"

and returned it with its contents intact to its owner. Thank you Bluu for the fine example.

SEMINAR

Summer Seminar for Teachers...

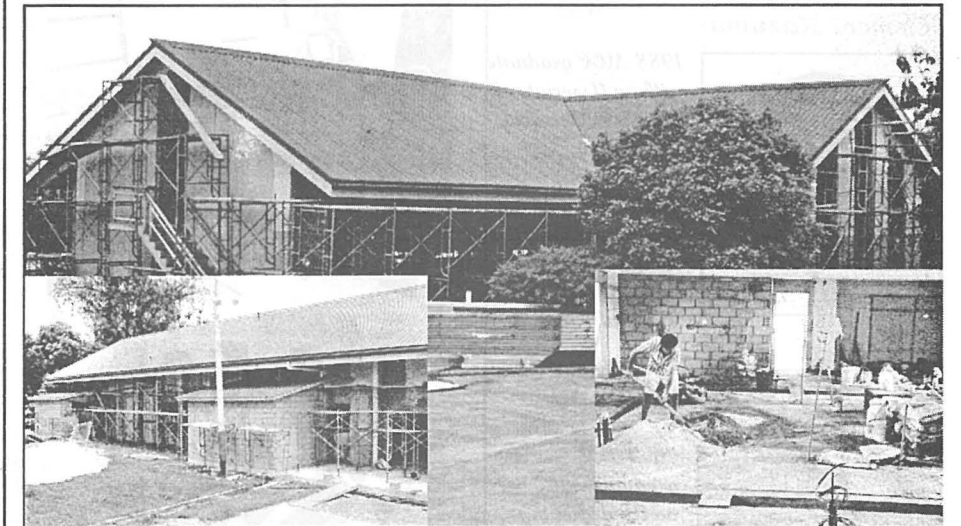
A seminar will be held in Hawaii from August 8 to August 13 entitled "Hawaii National Great Teachers Seminar". For information, go the following website www.greatteacher.hawaii.edu. The contact person is Ms. Cindy Martin at: cindymar@hawaii.edu. Fliers also available at Faculty Senate Association mailboxes locate in the Academic Affairs office.

FAREWELL

Mandarin Instructor Leaves this Month...

Mandarin instructor Tzu-Ching Chen is set to return back home to Taiwan at the end of this month after successfully completing her two-year teaching assignment at PCC. Chen taught basic Mandarin classes to PCC students.

PTHSE Construction to be Completed in August 2010



The PTHSE which will serve as a laboratory for Tourism & Hospitality students is a joint project between the Ministry of Education, Belau Tourism Association and Palau Community College. (inset) View of north side of building with storage rooms; work on inside of building.

Alum Joins SBDC Team



Ngirmeriil

Meleana Ngirmeriil, a Palau Community College student who graduated this past summer 2009, majoring in Office Administration (OA), joined Palau SBDC on February 04, 2010 as an Office Manager to help and assist the Center Director, Ms. Lisa K. Abraham. Her role will be assisting with general office work as well as small business research work, conducting surveys, and coordinate center programs. Ms. Ngirmeriil is computer literate, trained in computer programs, i.e. Microsoft word, Access, Excel, Powerpoint, and Photo Shop. She can operate office equipments and has great communication skills as well as interpersonal skills.

Experience: General Office Clerk at the Division of Labor Office, Tutor IV at Koror Elementary School for the 6th grade classes, and did some office work, i.e. filing systems, grading papers, assisted in organizing the Teacher's' papers for classes, and also, served as an office clerk at the First Fidelity Bank, Inc.

During her attendance at Palau Community College (PCC), Ms. Ngirmeriil was a recipient to several scholarships. Through the assistance of PCC Development Office, she received Shell Scholarship for the amount of \$500 and was provided the opportunity for two consecutive semesters (Fall & Spring 2009). Similarly, Ms. Ngirmeriil was a recipient of cash value of \$1,500 through the assistance of Palau National Scholarship Office, which was also given to her on two consecutive semesters (Fall & Spring) until she graduated. Accord-

ing to Ms. Ngirmeriil, "if the Palau Grant Program was absent from my life, I would have not accomplished my academic goals and

would probably be working to finance my education. From summer 2007 until Spring 2009, I had the opportunity to receive the assistance of grants to finance my education, so I encourage Palauan students to take advantage of the opportunity while it's available, and also while PCC is there to help. Again, thank you Palau Grant Program and PCC for your support."

Ms. Ngirmeriil is an alumna of Upward Bound Program. The program helped her succeed in tough times in High School until her graduation from college. She conveys her appreciation for the program and wishes all the Upward Bound Program students to seize every opportunity to succeed!

Hobbies; Swimming, Singing Church songs, Watching Comedies/Cartoons, and Story-telling with Family and Friends. On her free time, she enjoys redecorating her home and meditating with the Lord.