

Attention all Second Year Students and their Advisors

In preparation for internship placement for Fall Semester 2001, we need to know the number of students who will be eligible for the internship program. To assist in this effort, Students Advisors are requested to advise and refer those eligible students to the Extension Program Coordinator, Vincent Ito at the Continuing Education Office.

Internship application forms can be obtained anytime during working hours at the Continuing Education Office. Deadline for submission of application forms is Friday, August 2, 2001 in order for students to be considered for internship placement.

The Internship program is a 4-credit course provided as a final requirement for students who have completed all their course requirements or at least have one remaining class to be taken concurrently with the Internship training.

For more information, contact the Extension Program Coordinator, Vincent Ito at 488-2471, ext. 238.

Palau Community College Library Facts:

- ◆ Serves as a de facto national library, open to everyone in the community 85 hours per week.
- ◆ Implemented the first on-line catalog in the Republic of Palau in 1994.
- ◆ Utilizing MARC's 856 tag for links to electronic resources.
- ◆ Cataloging expertise.
- ◆ Developing bilingual authority list for subject access to images.

 **Mesekiu's News**
Palau Community College
P.O. Box 9
Koror, Palau 96940

How did the *Mesekiu* (Dugong) Become the Mascot for Palau Community College




Palau Community College, back in 1993, conducted a community-wide contest to choose the mascot for the College. Resulting from the contest, the *Mesekiu* (Dugong) was selected to be the PCC Mascot. With several entries to choose from, the decision to select the *Mesekiu* was based on the following:

The Palauan *Mesekiu* is unique to Palau, just like PCC. Because the *Mesekiu* is unique to Palau, it must be preserved, nurtured, and protected. Like the *Mesekiu*, PCC is Palau's only college and needs the community's active support and assistance in order to thrive. The *Mesekiu* cares for its young until it can survive on its own. PCC strives to provide a quality educational experience to all our students, preparing them for success in either four-year degree institutions or out in the world of work.

Reminder to Students in EN 91, 93, and 95

The deadline for earning your 30 points in the Reading Lab and/or 10 hours of Tracking is July 13, 2001. Remember, if you don't earn your reading points and/or hours in Tracking, you will get NO CREDIT for the course and will have to repeat it next semester. For EN 95 students, a practice final is available for you. You may come in starting July 10 to take your practice exam. EN 91 and 93 students are also encouraged to come in and review for the finals.

Celebrating Birthdays

	Geraldine Rengiil	June 22
	Ezra Takeo	June 22
	Sebastian Ngiratrang	June 25
	Serelina Ridep	June 30
	Meridith Randall	July 2
	Mario Katosang	July 4

Happy Birthday to you!!!



MESEKIU'S NEWS

FREE COPY



Friday, June 29, 2001

Weekly Newsletter

Volume 3, Issue 26

Conservation Plan for PCC's R&D Station Completed

by: Yimnang Golbuu, PCC-CRE Researcher/Aquaculturist



The Palau Community College - Cooperative Research & Extension's R&D Facility sits on top of a hill overlooking a 25 acre-spread of farmland in Ngarmeskang, Ngaremlengui.

Palau Community College - Cooperative Research and Extension's effort to investigate and demonstrate sustainable agriculture techniques and systems were advanced with the completion of the Conservation Plan for Palau Community College's Research & Development (R&D) Station.

The conservation plan for the R&D station in Ngaremlengui was completed and signed into effect on April 13, 2001 by Anita Rechirei-Suta, Vice President of PCC-CRE and Robin DeMeo, Resource Conservationist of the Natural Resources Conservation Service. The R&D Station will implement and showcase productive resources management, environmental protection, pest control, and water quality protection practices in addition to production, processing, marketing and consumption of agriculture and aquaculture products.

The specific problems facing the R&D Station that will be addressed by the Conservation Plan includes soil quality and quantity, water quality and quantity, and plants and animal concerns. The soil quality is poor with low soil *pH*, low fertility, high leaching of nutrients, and erosion in heavy rains. Due to the high clay content of the soil, poor infiltration and high erosion rates produce poor soil quality. Water quality and quantity problems include sedimentation and excessive water run-off. The plant concerns are for riparian vegetation improvement to control flooding and minimize sedimentation. Finally, the animal concern that needs to be addressed is the improvement of wildlife habitat for beneficial native species in the riparian areas.

To address the resource issues facing the R&D Station, several conservation measures will be implemented. To lower erosion rates, contour farming, crop rotation, cover, compost, mulch, and better drainage of run-off will be implemented. Crop yields will be improved with nutrient management, pest management, and an establishment of a windbreaker. Grasses and other vegetation will be planted at critical areas around the R&D Station. To improve water management on row crops, the R&D Station will use a trickle irrigation system.

Continued on Page 2

Continued from Page 1

The following are 16 specific conservation measures that will be implemented to address erosion/run-off and water management.

- ✓ Composting facility
- ✓ Conservation Crop Rotation
- ✓ Contour Farming
- ✓ Cover and Green Manure
- ✓ Critical Area Planting
- ✓ Diversion
- ✓ Hillside Ditch
- ✓ Trickle Irrigation
- ✓ Mulching
- ✓ Nutrient Management
- ✓ Pest Management
- ✓ Riparian Forest Buffers
- ✓ Tree and Shrub Establishment
- ✓ Vegetative Row Barrier
- ✓ Windbreak and Shelterbelt Establishment
- ✓ Wildlife Upland Habitat Management

PCC-CRE is committed to the Conservation Plan and its implementation and plans to implement most of it by September 2001. Many of the conservation practices recommended by the plan are already being implemented. The contract for building the composting facility has been signed and work will commence soon. A schedule of the conservation crop rotation has been worked out and some of the plots are now being planted with different crops. The plots at the R&D Station are already set for farming but they will be improved to follow the contour of the land more closely. Several of the plots are now planted with *Sunn Hemp*, a form of green manure. An outside contractor is stabilizing critical areas at R&D and vegetating of those areas is in progress. With technical assistance from the Natural Resource Conservation Service Engineering Office in Guam, the irrigation survey has been completed for the plots at R&D and the trickle irrigation plan will be completed by August, 2001.

With the Conservation Plan in place, the R&D Station will serve as a model for Palau and Micronesia to show and demonstrate that agricultural production can be conducted in harmony with the natural environment. People who visit the R&D Station will be able to see actual conservation measures being implemented in the field and see how such practices contribute to improve crop yields and environmental protection.

PCC-CRE would like to thank Ms. Robin DeMeo, for her assistance in the preparation of the Conservation Plan and the Natural Resource Conservation Service Office for the Pacific Basin in providing technical and engineering assistance.

For further information, please contact Palau Community College-Cooperative Research & Extension at phone: 488-2746, fax: 488-3307 or e-mail: Asuta@palaunet.com.



PCC-CRE Research & Development Director, Thomas Taro (l) showing PCC-BOT Chairperson Bilung Gloria Salii (c) and Nancy Wong the Taro plantation during a recent visit to the R&D Station.

All ROP Employees Invited to Join Endowment Club

Palau Community College continues to invite all employees of the public and private sector to join us in the PCC Endowment Fund Contributors' Club. Donate up to 10% of your taxable income every year and receive a full refund as PCC is a public non-profit organization. For your information, more than 100 PCC employees have been on this program for the past three to four years. **Last year, we were joined by five employees of the Palau National Government and 15 employees of Aimeliik Elementary School as well as Aimeliik State Government.**

Upon joining, they challenged all their counterparts in the government and school system to follow, however, their challenges have remained unanswered thus far, with one exception. **Maris Stella School teachers as well as their principal Mr. Felix Okabe, (a former PCC Trustee) joined the Endowment Club this year!** Indeed the club gets bigger and we want to increase it even more. Therefore, we continue to invite all employees to join this worthy cause. Because the purpose of the PCC Endowment Fund is to ensure the financial viability of Palau's only community college, your membership means you play an important role in the future of higher education for Palau.

By enrolling in the Endowment Club, you contribute whatever amount you like and are eligible to receive up to 10% of your taxable income at the end of the year. In other words, you donate to a most worthy cause and get your money back! This is truly a win-win opportunity so we encourage all employees to join the club today. Join us and secure the future of Palau Community College, OUR COLLEGE, for our children and their children. **Together, we can make a difference!**

To enroll in the PCC Endowment Contributors' Club or to get more information about the PCC Endowment Fund or other programs at PCC, call

Jay Olegeriil or Armstrong Debelbot
 at PCC telephone number
 488-2470/2471.
They will be very happy to assist you.

Palau Red Cross Society Thanks PCC Development Office Director

The following is a letter from the Palau Red Cross Society (PRCS) thanking PCC Development Office Director, Jay Olegeriil for his assistance during the recent PRCS Walkathon/Fundraising.

Dear Mr Olegeriil:

The Palau Red Cross Society would like to thank you for your support of our annual Walkathon/Fundraiser. The Red Cross Walkathon and the combined Palau Red Cross and the Senior Citizens Day Celebrations proved very popular and all the participants enjoyed this important community event.

Your contribution and/or services contributed greatly to the success of the event.

We very much appreciate your generosity to the effort of bringing the Republic of Palau together as a participant in the wider International Red Cross. Your continuing support is a most valuable and treasured resource and we look forward to working with you again in the future.

Sincerely,
 /s/
 Miriam Chin
 Executive Director

Vacancy Announcement

Position Title: Librarian
Salary: \$16,010.00 - \$18,730.00
 per annum depending on qualifications.

Application forms can be obtained from Palau Community College's Human Resources Office. Send completed application form with transcript, resume, and verification of previous employment to:

Palau Community College,
 Human Resources Office,
 P.O. Box 9, Koror, Palau 96940.

For detailed information about this vacancy announcement, contact PCC Human Resources Office at telephone number 488-2471, ext. 228.

BELAU GAMES 2001 POSTPONED

New Schedule: July 11-20
 Contact PNOG Office for details.

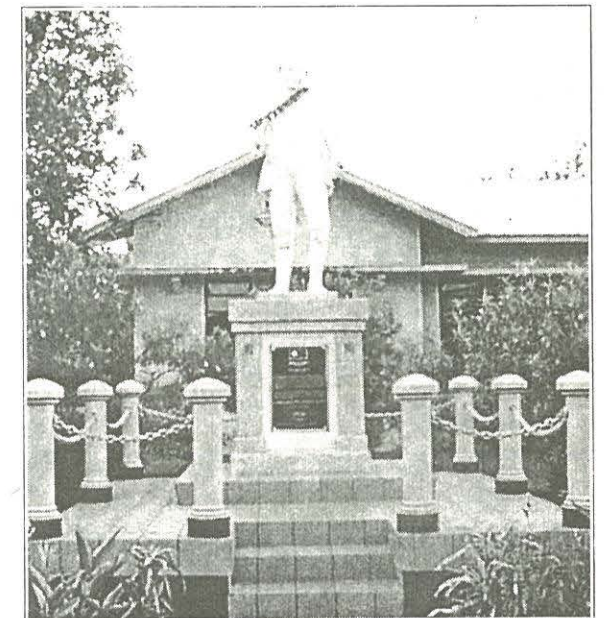
Scholarship Announcement

This is an announcement to all recent high school graduates planning to enroll at Palau Community College that applications for the following Scholarship Programs are available at PCC Development Office:

- ➔ Prince Leeboo Scholarship Program
- ➔ Roman Tmetuchl Scholarship Program
- ➔ Moylan's Insurance Scholarship Program
- ➔ Salome Foundation Scholarship
- ➔ Polycarp International Enterprise Scholarship

The deadline for these scholarship programs is Wednesday, August 1, 2001. Interested applicants are encouraged to submit their applications to the PCC Development Office no later than 4:30 p.m. on the deadline date.

If you have any questions or would like further information about these scholarship programs, please contact Jay Olegeriil at PCC telephone number 488-2470/2471.



Prince Leeboo Memorial Statue in front of PCC was donated by the Prince Leeboo Society, the donor of the Prince Leboo Scholarship Program.

Academic Calendar Summer Session 2001

July 9	(M) Holiday: Constitution Day
July 13	(F) Last Day of Instruction
July 16-17	(M-T) Final Examination Period
July 23	(M) Grades Due (End of Summer Session)