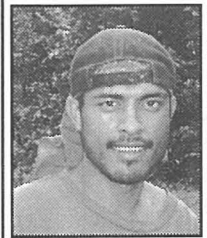


Alumni Notes

Class of 2005 (PCC)

Ned Ned -



2005 PCC graduate with a Certificate of Achievement in Agricultural Science. Ned is a Farm Specialist at the Taiwan Technical Mission farm in Nekken, Aimeliik.

Class of 1999 (PCC)

Eileen Babauta -



1999 Class Valedictorian, Babauta graduated with an Associate of Science degree in Business Accounting. After graduation, she worked for the Continuing Education Office where she helped facilitate the first PCC-

SDSU online cohort. Babauta would later enroll in the program and earn her bachelor's degree. She now works for the Koror State Government- Solid Waste Management as an administrative officer.

Class of 1977 (MOC)

Haruichi Telmetang -



1977 MOC graduate with a Vocational Certificate of Achievement in Agricultural Science. Telmetang works as a Quarantine Officer with the Palau government's Bureau of Agriculture.

Alumni Notes showcases MOC&PCC alumni who contribute to the quality of life in their local community and are positive role models for other PCC students to emulate. If you are that alumni or know someone who is, please contact the PCC Development Office at telephone number 488-2471. We would like to feature you and all alumni in future issues of the *Mesekiu's News*.

Celebrating Birthdays

| | |
|-----------------|---------|
| Grace Yalap | June 26 |
| Terry Ngirmang | June 27 |
| Hilda Ngiralmu | July 4 |
| Sheree Sengebau | July 9 |

Happy Birthday To You!

MESEKIU'S
Palau Community College
P.O. Box 9, Koror, Palau
96940

Summer Intramural Tournament

By: Elliot Benzle, Mesekiu's News Workstudy Student

Every term the Recreation Office puts on an Intramural Sports Tournament, and this summer is no different. Over the next few weeks seven teams will be competing in both basketball and volleyball for bragging rights and cash prizes.



Student Bija Jesse goes for a slam dunk during Tuesdays game.

Teams have already been formed although students are still able to join an established team if they missed out on the first round of picks:

Games will be played throughout the summer session. Any rained out games will be made up on weekends or during the week of July 17-24. Playoffs will begin after completion of all normal games and rained out make up games. The top three teams will claim cash prizes with the amount still waiting to be determined. The tournament is drug and alcohol free and all students are asked to play fair and make this a great event for everyone.

| Team | Captain |
|----------------|-------------------------|
| Chronic | De-Lugo Florencio |
| Bud Boys | Roger Ramirez |
| Phillip Morris | Arthyson Jonas |
| Island Force | Elword M. David Salapwa |
| RMI | Paulson Laiden |
| N.T.N. | Cody Aichi |
| LAGIC | Duffy Tulensru |

For more info stop by the Recreation Office or come check out the games every night starting at 7:00. And if you see any Recreation staff be sure to thank them for all their hard work and effort.

Game Schedules

Volleyball

| Monday 7/06 | Wednesday 7/08 | Friday 7/10 |
|---|---|---|
| Philip Morris vs N.T.N. Bud Boys vs N.T.N. | Chronic vs RMI Philip Morris vs N.T.N. | Chronic vs Island Force Philip Morris vs RMI |
| Monday 7/13 | Wednesday 7/15 | |
| Island Force vs N.T.N. Bud Boys vs LAGIC | Island Force vs LAGIC | |

Basketball

| Tuesday 7/07 | Tuesday 7/09 | Tuesday 7/14 |
|--|---|--|
| N.T.N. vs Philip Morris Island Force vs Chronic RMI vs Philip Morris | LAGIC vs Chronic Budboys vs N.T.N. LAGIC vs RMI | Island Force vs N.T.N. Budboys vs Chronic LAGIC vs Philip Morris |



Team RMI.

Library, from Page 3

pick a wide variety of coloring pages and just color for the fun of it.

*Reading/Story Telling

(Monday-Wednesday-Fridays)
3:00 p.m. 4:00 p.m.

Age: Kindergarten to Elementary
In this activity, students who are invited get to pick one of their favorite books and read it to the rest of the group.

Students may bring their own book from home to share.

For more information about these summer programs at the PCC Library, please contact Pioria Wally at 288-2471, ext. 261.

Palau Community College FREE COPY



MESEKIU'S NEWS



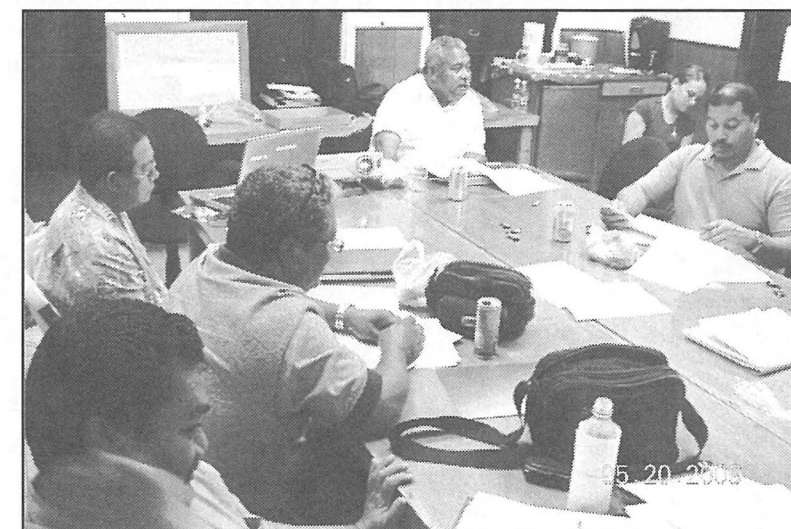
Friday, July 3, 2009

Weekly Newsletter

Volume 11, Issue 27

Strategic Directions 2009-2024 Put Emphasis on Mission and Vision

In a recent meeting of the steering committee tasked to draft the long range plan for the College (PCC Strategic Direction 2009-2024), PCC President Dr. Patrick U. Tellei told everyone that they should keep the vision and mission statements of the school at the forefront as they draft the document that will essentially be the road map for the College in the next 15 years. "Our vision statement says where we want to be; our mission statement says who we are and what we are," Tellei said during the group's weekly meeting held in the board room. He also said that to further keep everything in perspective, the



President Tellei(c) leads discussion during a recent meeting of the steering committee for the PCC Strategic Directions 2009-2024.

identified four strategic directions (Student Success, Institutional Culture, Resources, and Culture of Evidence) in the PCC

Strategic Direction 2009-2024 should be viewed as "bridges" that connect the College's vision and mission*. "Bottom line, the goals and objectives per each strategic direction must support the mission which in the long term should help us realize our vision of 'Guaranteeing Quality & Excellence', Tellei added. In addition to the emphasis on vision and mission, the planning group is also making certain that the strategic direction plan will prioritize activities to make resource dedication and allocation easier.

Using the first PCC Ten Year Institutional See **Strategic Directions on Page 2**

PCC Wins IMLS Bookshelf Award



Megan Beard, LS Instructor

Library and Information Services (LS) instructor Megan Beard recently received news from the Institute of Museum and Library Services (IMLS) that the proposal she submitted has been approved. Beard who is currently in Texas to attend to family obligations shared the news with the Interim-Librarian Debra Neas and library

staff through email, saying that PCC has won the IMLS Bookshelf award which is a set of books about preservation and conservation in libraries. She said the See **Bookshelf Award on Page 2**



Happy 233rd Birthday America!!

The PCC Family of Board Members, Administrators, Faculty, Staff and Students express gratitude and appreciation to the people and country of the United States of America for their decades of friendship and unwavering support to Palau and Palau Community College. Happy 4th to all Americans in Palau and elsewhere!

Strategic Direction, from Cover

Master Plan as a reference source, the planning group is adopting a similar format, clearly outlining the main strategic directions, and the goals, objectives, and activities under each direction. With the strategic directions identified, the group is currently working on refining goals and writing objectives and specific tasks to support such goals.

The group which is scheduled to meet again on July 13 will continue the review of new objectives and tasks. For more information about the PCC Strategic Direction 2009-2024, stop by the Development Office or call Armstrong or Nino at ext. 253.

CRE Conducts Pesticide Seminar



(l-r) Trainer Dr. Nelson Esquerra of PCC-CRE, PCC-CRE Vice President Thomas Taro, EQPB Executive Director Portia Franz, Invasive Weeds Specialist Dr. Joel Miles, and Upward Bound Director Kuye Belelai during the certificate award ceremony. Belelai gave the keynote address on behalf of PCC President Tellei.

The Palau Community College- Cooperative Research & Extension (CRE) department of the College in collaboration with the Environmental Quality Protection Board and the Bureau of Agriculture held a training for pesticide applicators from June 29-July 2.

According to the Dr. Nelson Esquerra who conducted the training, the week-long workshop helped participants identify various pests and the appropriate control measures needed for the pests. Esquerra said the turnout was substantial with thirty-five attending from various government and semi-government agencies, and thirteen migrant Chinese

PCC Vision Statement: We Guarantee Quality & Excellence

PCC Mission Statement:
Palau Community College is an accessible public educational institution helping to meet the technical, academic, cultural, social, and economic needs of students and communities by promoting learning opportunities and developing personal excellence.

Bookshelf Award, from Cover

books would be a great resource for the LS program, especially in LS 125 class where concentration is on book repair and preservation of printed materials. "Hopefully this collection will serve as a valuable resource not only for the LS students, but for all of the librarians of Palau as well," said Beard.

The library should be receiving the books in the next few weeks but more information about the books that will be included: http://www.aaslh.org/Bookshelf/documents/Bibliography121508pdf_001.pdf.

The IMLS is the primary source of federal support for the US's 123,000 libraries and 17,500 museums, and its mission is to create strong libraries and museums that connect people to information and ideas. The Institute works at the national level and in coordination with state and local organizations to sustain heritage, culture, and knowledge; enhance learning and innovation; and support professional development.

farmers. "Such training offered at other regional institutions such as the University of Guam and the University of Hawaii costs \$50 per person. We understand the importance of such training for the local farmers, and so we worked hard to secure funds so participants could attend for free.

Certificates were given to all participants on the final day of the training. A test for pesticide applicator was also administered during the last day. Those who pass will be certified by the office of the Environmental Quality Protection Board, and receive their official pesticide applicator's license.

The PCC Library is among the nearly 3,000 libraries and museums across the United States and its territories to receive the IMLS Bookshelf award.



Beard and LS program student Magdalene Nena assist library staff Miriam Kual (foreground) and Pioria Wally (background) organize the collection of the Western Curriculum Coordination Center (WCCC) last semester.

For more information about this and other PCC-CRE training, contact Thomas Taro at 488-2746.



Participants of the CRE training for pesticide applicators.

BITS AND PIECES...

IMPORTANT DATES

Last Day for Withdrawals Next Week...

July 9 Constitutional Day Holiday
July 10 Last day for all withdrawals
July 31 Last Day of Instructions
Aug. 3-5 Final Examination Period
Aug. 7 Grades Due
Aug. 14 Last day to change grades

SLO CONSULTANT

Schedule Change...

The original visitation schedule of consultant Dr. Kenneth Gonzalez of the University of San Diego which was July 20-24 has been rescheduled to July 27-31. Gonzalez will do follow-up work on the Student Learning Outcome seminar he conducted back in January. He will also train selected staff on the organization and utilization of students focus group. For a copy of Gonzalez' complete itinerary, contact the Dean of Students Marenia Edward at 488-2471, ext. 229.

FREE PHOTOS

PCC Graduation Photos at Development Office...

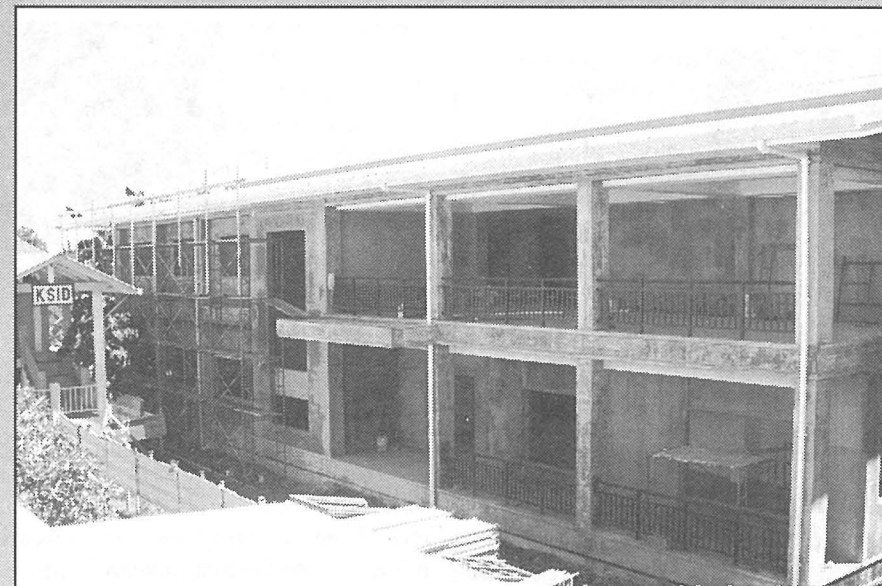
The PCC Development Office, with the support of instructors Rose Aliven-Kohama, Danka Ledgerwood and recent graduate Glow Myotel Ngwal has compiled pictures from the 46th Commencement Exercises and they include numerous pictures of PCC, Adult High School, San Diego State University, and MOH graduates. Photos are of the graduation rehearsals and the graduation event itself. For copies of the photos, bring your USB drive to the Development Office. The Photos are FREE but donations to the PCC Endowment Fund are always welcome.

DONATIONS NEEDED

CSO Welcomes Item Donations...

One of the most active club on campus- Chuuk Student Organization- welcomes in-kind donations of any sort to sell at their parking lot sale. Contact Rose at ext. 241 to donate. Thank you.

184 Days Into 270 Days of Construction of the New PCC Library

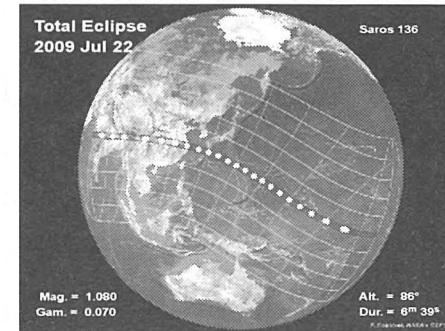


Eighty-six (86) more days to go according to the original construction schedule of the new three-story library building. The building will house the library collections on the first two floors while the top floor will be used for faculty offices and office of the Associated Students of Palau Community College.

Solar Eclipse Wednesday, July 22

By: Lorraine Tellei
Melekeok Elm. School Science Teacher

Lucky residents of Shanghai, China, Iwo Jima, Japan and Enewetak Atoll, Marshall Islands and their guests will view a total eclipse of the sun on Wednesday, July 22. The rest of us in the Pacific will see a partial eclipse the same day. At local noon in Palau and CNMI, the best way to enjoy this wonder of nature is to eat your lunch in the shade of a tree. Those circles of light you may have observed dancing in the gentle breeze are images of the sun in a pinhole camera effect. At the eclipse, they



White circles shows the path of the Solar Eclipse all become similar crescents or "cookie with a bite out," images of the eclipsed sun. For exact local times, consult your science teacher.

PCC Library Offers Summer Programs July 13-31, 2009

- ***Library Orientation**- Open to anyone (9:00 a.m.- 1:00 p.m.)
- Library Tour
- Showcase Available Resources
- Apply Email Accounts
- Using Search Engines
- Apply Library Card

*Palauan Legend Illustration

Age: Grade 5 High School Level
For this activity, a student can pick one of the stories from the Palauan Legend book in the Micro-P and can read it and retell it the way she interprets the story. Then has the option to do some of his/her

own illustration of the story. At the end of the month (July 31st) library will put together the stories and illustrations with name of author, illustrator, and age before printing it. This copy of the publication will be added to the Micro-P collections. There will be small token prizes for authors/illustrator

*Coloring for Fun

(Monday-Wednesday-Friday)
2:00 p.m. 3:00 p.m.

Age: Kindergarten to Elementary
*In this activity, the students will get to