

ALUMNI NOTES

Class of 2006 & 2008

Harriet Alfonso



Earned her Certificate of Achievement (CA) in Business Accounting - Bookkeeping and her Associate of Applied Science (AAS) in Office Administration. In 2009, she worked at Airai State Government in the Airai State Public Land Authority as the Business Officer and in 2012 she began working at Hawaiian Belau Rock as a cashier/office clerk. *Message: Mo blak a rengmiu el ngara skuul. Stay away from alcohol & drugs.*

Class of 2010

Punssen Imetengel



Earned his Associate of Applied Science (AAS) degree in General Electronics. He worked as a Science teacher for Airai Elementary School, teaching 5th - 8th graders. In 2012, he began working at PPUC as an IT Assistant. *Message: Stay in school. It's the key to success in life.*

Class of 2011

Cara Cruz



Earned her Associate of Science (AS) degree in Tourism & Hospitality - Hospitality Management. She worked at Cliffside Hotel as a front desk clerk. In 2012, she began working at SPACO Finance as an accountant. *Message: Mo blak a rengmiu el ngara skuul mel bol sebechemiu el mo ungil a ueriu.*

Alumni Notes showcases MOC & PCC alumni who are positive role models and contribute to the quality of life in their local communities. If you are that alumnus/alumna or know someone who is, please contact the PCC Development Office at telephone number 488-2471. We would like to feature you in future issues of the *Mesekiu's News*.

Mesekiu's News
Palau Community College
P.O. Box 9, Koror, Palau 96940

Celebrating Birthdays

Sheryl Pagador	Jul 16
Don Hanser	Jul 17
Jalavenda Osima	Jul 20
Husto Ulengchong	Jul 20
Grace Merong	Jul 22

Happy Birthday To You!

Summer Table Tennis & Billiard Intramural Tournaments Concluded

With summer coming to an end, the Table Tennis and Billiard Intramural Tournaments have concluded. The tournaments were held from June 27, 2012 through June 30, 2012. Students competed in the following categories: Table Tennis Singles-Male & Female, Billiards Male Single and Co-ed Teams. The top three in each category who received cash prizes are as follows:

Table Tennis Male (Single):

- 1st Kenry Boaz
- 2nd Paulus Tamannalon
- 3rd Edgard Nena

Table Tennis Female (Single)

- 1st Cierra R. Sbal
- 2nd Pedreama Rechy
- 3rd Josepha Kazuo

Billiard (Male-Single)

- 1st Ray Macayaon
- 2nd Paulus Tamannalon
- 3rd Chester Piyerigyal

Billiard (Co-ed)

- 1st Arleen Fel & Paulus Tamannalon
- 2nd Pedreama Rechy & Maverick Ioanis
- 3rd Michelle Akkin & Kampis Katwan

The Recreation Office holds activities for students throughout each semester. For upcoming tournaments and activities to join, contact Recreation Office at 488-3885. Office hours are 12pm - 9pm.

JOIN THE ENDOWMENT FUND TODAY!

Invest in the future of
Our Students, Our College, and Our Nation

To support, contact us today at:

P.O. BOX 9 Koror, PW 96940
Phone: (680) 488-2470/2471 ext. 252/253
Email: tellei@palau.edu
Website: www.palau.edu

Vacancy Announcement

- (1) English Instructor, Learning Resource Center
Salary range: \$14,802 - \$24,647 per annum
- (2) Math Instructor, Learning Resource Center
Salary range: \$14,802 - \$24,647 per annum
- (3) Counselor, Student Life Office
Salary range: \$12,650 - \$19,479 per annum
- (4) CHL Palau Outreach Educator
Salary range: \$12,653 - \$21,000 per annum
- (5) Researcher/Aquaculturist
Salary: \$30,000 per annum
- (6) Assistant Director of Admissions & Financial Aid
Salary range: \$16,010 - \$24,647 per annum

Vacancy Announcement

- (7) Librarian
Salary range: \$16,010 - \$24,647 per annum
- (8) Associate Professor, Business Accounting
Salary range: \$18,009 - \$27,725 per annum
- (9) Associate Professor, Library & Information Serv.
Salary range: \$18,009 - \$27,725 per annum
- (10) Instructor, Air Conditioning & Refrigeration
Salary range: \$16,010 to \$21,191 per annum

For application forms and information, please contact Harline Haruo at PCC Human Resources Office at 488-2470/71, ext. 227, email hr@palau.edu or download form at www.palau.edu

PCC is an Equal Opportunity Employer

PALAU BEACH BUNGALOWS

Peace & Relaxation Palauan Style!

Only \$40+tax daily rate
Private a/c bedroom&bath, living room, kitchenette
Beachside on big island of Babeldaob
Melekeok State
30 minutes from Palau International Airport
RESERVATIONS: 680.587.2533
Swim, snorkel, jungle walks, cultural sites
palaubeachbungalows@palaunet.com
www.palauparadise.com

FREE!!!

Palau Community College



MESEKIU'S NEWS

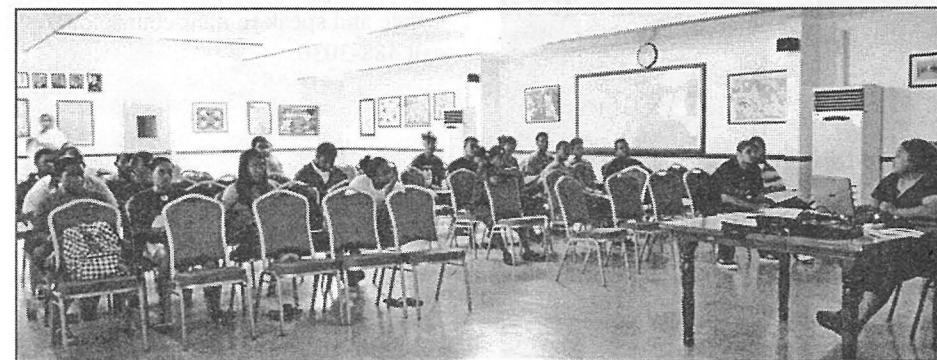


Friday, July 13, 2012

Weekly Newsletter

Volume 14, Issue 28

Information Workshops Held For Students



Counselor Glendalynn Ngimmeriil presenting the workshop.

Student Life Counselors held a series of workshops from July 2-11, 2012. The workshops held for students focused on information regarding courses including remedial courses, study skills and time management. The counselors stressed the

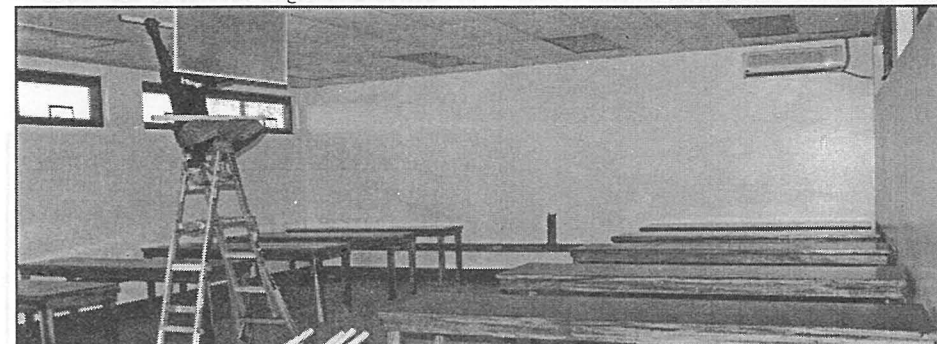
importance of completing and passing all classes including remedial courses used as pre-requisites in order for a student to graduate on time. By not passing pre-requisite courses, a student's graduation date is de-

Workshop cont'd on p.2

Renovated Computer Classroom

As PCC continues offering more on-line courses, the demand for computers by students continue to increase. Through AANAPISI grant, PCC has purchased 30 new computers and 10 printers. They will be installed in the renovated and redesigned room 61

which has been converted into a computer classroom while Room 60, with 20 computers will be used as the open lab for all students. The renovations were done by the PCC Maintenance crew. The classroom will be ready for the 2012 Fall Semester.



Maintenance worker Yoshi Okabe adding the fluorescent lights into the fixtures.

Palau Community College is an accessible public educational institution helping to meet the technical, academic, cultural, social, and economic needs of the students and communities by promoting learning opportunities and developing personal excellence.

Project MACIMISE Palau Institute

Project MACIMISE (Mathematics and Culture in Micronesia: Integrating Societal Experiences), a National Science Foundation funded project granted to PREL will hold its yearly institute in Palau from July 22-29, 2012 on the campus of Palau Community College.

The project is a collaboration between PREL and UH-Manoa. One of its goals is to help 22 individuals from the Pacific region obtain their Doctorate and Masters degrees from UH-Manoa. The 22 individuals, referred to as Macimisers, include Epi Moses of PCC who is pursuing his PhD and Lucia Tabelual of MOE pursuing her Masters degree.

The institute will be led by Dr. A.J. Dawson, National Science Foundation Director and seven internationally recognized mathematics educators:

- Dr. Bill Barton, University of Auckland & President, ICMI
- Dr. Betsy Bremner, UC- Santa Barbara
- Dr. Beatriz D'Ambrosia, Miami University of Ohio
- Dr. Shandy Hauk, Senior Research Associate in the STEM, WestEd
- Dr. Jerry Lipka, University of Alaska-Fairbanks
- Dr. Arthur Powell, Rutgers University
- Dr. Kathy Ratliffe, UH-Manoa

US Ambassador Helen Reed - Rowe Visits PCC R&D Station

Contributed by CRE Staff

On Friday, June 29, 2012 US Ambassador Helen Reed-Rowe and her staff visited the PCC Research and Development Station in Ngermeskang, Ngaremlengui, the center of Agricultural Research of PCC. During her visit, she was briefed on the conservation and maintenance of root crops germplasm collection of Palau at the PCC R & D Station consisting of 78 varieties of taro, 53 varieties of cassava and 22 varieties of sweet potato. In

addition, several varieties of hybrid taro, cassava and sweet potato acquired from the Center for Pacific Crops and Trees of the Secretariat of the Pacific Community (CePaCT – SPC) are also being maintained at the R & D Station. The group was amazed with the way taro is grown in artificial media using the plant tissue culture technique for the rapid mass propagation of taro. They also

Visit cont'd on p.3



L-R: Dr. Aurora Del Rosario, Ambassador Helen Reed-Rowe, Dr. Lydia Marero, Leilani Rechelluul & Mona Carlson.

Emotional Health Workshop For UB

On July 5, 2012, the Upward Bound students attended a workshop presented by Behavioral Health Division Psychiatrist Dr. Jasmine Vergara. Dr. Vergara provided UB students information on Emotional Health with discussions on what is emotion, the basic types, how the brain is responsible for different emotions, and differentiating emotional and rational mind. By illustrating examples, Dr.

Vergara was able to show students how emotional responses can be viewed as emotional or rational and gave them basic tools (The ABC's of Emotional Intelligence) which can help them when they are faced with situations that require them to become self aware and observe their feelings. By applying what they have learned, students can improve their reaction and interaction with others.



UB students listening to Dr. Vergara at the PCC Cafeteria.

Report cont'd from p.1

layed. The students were provided critical information that promotes student success. Also discussed were tips on note-taking, effective study habits, test taking, seeking assistance, time management and one's study environment. Most importantly, one needs to maintain constant communication with the instructor. In doing so, student's needs are identified and addressed early on.

Students who missed the workshops and would like to obtain the information are urged to stop by Student Life Office and speak to their counselors or call 488-3036.

NEW BOOK
Many Voices, One Dream
From Mokko to Palau Community College
 By Floyd Takeuchi

Available at PCC Bookstore!
Retail Price: \$35.00
Call 680-488-2470 for more information.
 Online information at: www.pcc.edu

To purchase a copy, pay at the Business Office and bring receipt to the Bookstore to receive a copy of the book.

More information of PCC online

www.pcc.edu

Palau Community College - PCC

BITS AND PIECES...

Internship Application

Application forms for Fall 2012 Internship Training are ready for pick up anytime during working hours from Monday to Friday. See Vincent Ito, Curriculum/Student Training Coordinator.

Deadline for submission: July 27, 2012

PCC Tan Siu Lin Library

Summer hours for the Library

Monday to Friday: 8am - 5pm
 Saturday: 9am - 6pm
 Sunday: CLOSED

For information call 488-3540.

Scholarship Information

Taiwan Fellowship

The Taiwan Fellowship is established by the Ministry of Foreign Affairs (MOFA) to award foreign experts and scholars interested in researches related to Taiwan, cross-strait relations, mainland China, Asia-Pacific region and Chinese studies to conduct advanced research at universities or academic institutions in Taiwan.

Application Period: May 1- July 15, 2012.

Online application:
<http://taiwanfellowship.ncl.edu.tw/>

Financial assistance:

- * Monthly grants
- * One round-trip, economy class ticket to Taiwan
- * Terms for fellowship are 3-12 months
- * Accident insurance

More information on website or contact the R.O.C. Embassy at 488-8150.

News/Stories Wanted

MESEKIU'S NEWS welcomes stories/ articles/ announcements from students, faculty, and staff. Submission deadline is Monday at 4:30 p.m. in hard and electronic copies to adoraa@palau.edu, dilubchs@palau.edu and alvinam@palau.edu.

Please call ext. 250/252/253 if you intend to submit your article after Monday or for more information.

Fall Semester 2012 Pre-Registration Schedule

Contributed by Registrar's Office

Early registration for fall semester classes will be held on Monday, July 16th and Tuesday, July 17, 2012. This is an opportunity for continuing students to reserve their classes early. Once you pre-register, you will not return to campus until the first day of class on Monday, August 13, 2012.

ing to the schedule below:

July 16 (Mon)	8:30am - 11:30am 1:00pm - 4:30pm
July 17 (Tue)	8:30am - 11:30am 1:00pm - 4:30pm

Anyone who misses the above dates will have to wait for regular registration schedule on Thursday, August 9, 2012 and Friday, August 10, 2012.

Please follow the regular registration process when you register for classes accord-

Maintenance Continues Efforts In Improving PCC Infrastructures

Contributed by Maintenance Department

As previously reported at the beginning of summer with the Cafeteria receiving major renovations like the doors being changed, air conditioning units relocated and building being re-tiled, repainted, light fixtures repaired, the maintenance crew has been busy doing all kinds of major projects. The following is a list of additional projects being undertaken during the summer:

- *Complete repair and facelift of Day Care Center - complete
- *Installation of Automotive Mechanic Technology (AMT) shop's "grease pit" - complete
- *Full repair of Dormitories in preparation for the new school year, including

- painting, electrical work, replacement of lockers & study tables - on-going
- *Renovation & redesign of the Business Office to be customer friendly - complete
- *Preparation of classrooms for new school year - on-going
- *Campus beautification, including on-going general clean-up and landscaping - on-going
- *Building a fence around the Airai Rabbit Fish Hatchery grounds - complete

Thank you Maintenance Crew for keeping our campus safe & beautiful and most importantly, conducive to learning.

Visit cont'd from p.2

observed the taro plantlets in the greenhouse where the plants are grown prior to distribution to farmer clients. They were also very interested in the various local medicinal plants used to alleviate ailments for primary health care in the village. In the Crop Protection Laboratory, they learned about the use of biocontrol agents to control invasive weeds and the different pests affecting the taro and cassava plants and saw the insect collection

in Palau. The group also toured the farm to actually look at the various taro, cassava, sweet potato and yam growing in the field. At the Food Technology Laboratory, they tasted the various food products made from taro and cassava.

The visit was capped by a donation of gloves, machete, sickles and sharpening stones for use by the agriculture staff. Thank you very much Madam Ambassador!