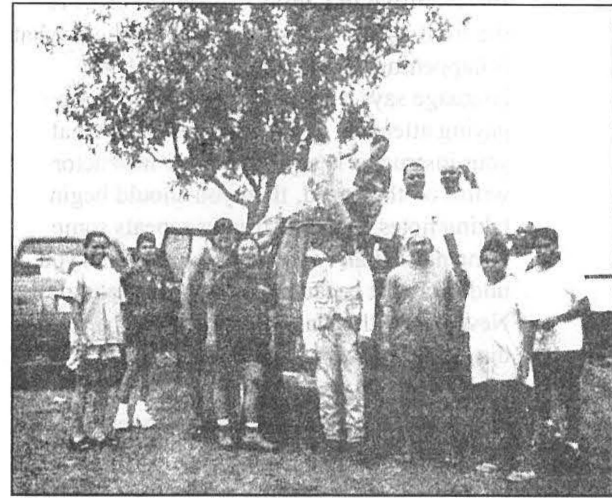


PCC Cafeteria Caters to Local Youth Group



Aimeliik Youth Association members

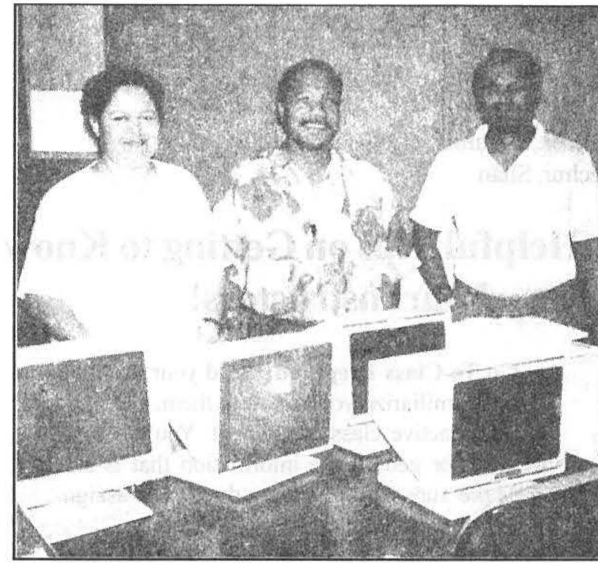
Aimeliik Youth Association (AYA) would like to thank PCC and Ezra Takeo and his staff for preparing a very delicious lunch for 300 very happy Aimeliik citizens during the recent "State of the State Meeting" on September 6. Thank You Very Much!

ATTENTION STAFF & STUDENTS!!!

Please submit your articles for our weekly newsletter, *Mesekiu's News*, to Armstrong Debelbot at the Development Office no later than 3:00 p.m. on Wednesdays. Thank you for your support!!!

Mesekiu's News
Palau Community College
P.O. Box 9
Koror, Palau 96940

USDA- Rural Development Gives Computers to PCC



Todd Ngiramengior (c), with Linda Michael (l) and Timuteo Ngcheed of USDA-Rural Development Office, receive the computer donations.

United States Department of Agriculture (USDA) - Rural Development Office here on Palau donated computers and printers to Palau Community College.

Todd Ngiramengior of the PCC President's Office met with USDA-Rural Development staff Timuteo Ngcheed and Linda Michael to officially receive the donations.

With the college's ever-increasing enrollment, the computers are a welcome addition to the already strained computer lab resources and PCC is grateful for USDA-Rural Development to have chosen the college to be the recipient of this donation.

Palau Community College MESEKIU'S NEWS

Friday, September 17, 1999

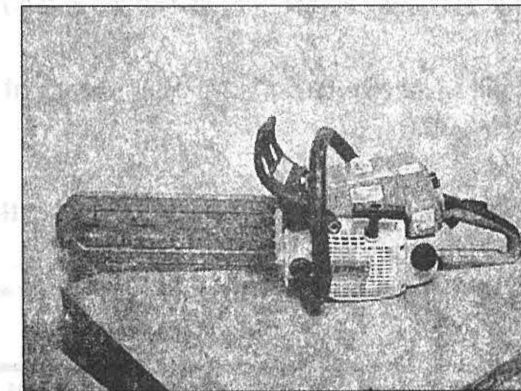
Weekly Newsletter

Volume 1, Issue 29

Local Shop Donates In-Kind to PCC Thanksgiving Fundraising Event

Rent-It-Center in Malakal, own and operated by Mr. & Mrs. Keone Isechal, donated a brand new *Stihl 021* Chainsaw worth \$645 dollars to PCC. This chainsaw will be one of the many great prizes that will be given to raffle-drawing winners during the PCC Endowment Fund - Thanksgiving Fundraising Dinner on November 24, 1999 at Palau Pacific Resort.

Palau Community College humbly acknowledges Mr. & Mrs. Keone Isechal of *Rent-It-Center* for their generous donation.



Stihl 021 Chainsaw donated by Rent-It-Center.

Tickets for the PCC Endowment Fund - Thanksgiving Fundraising are currently on sale at the Development Office. Please contact Jay Olegeriil or Armstrong Debelbot at 488-2471, ext.253 for tickets and information.

See Thanksgiving Advertisement on page 2

Parking Lot Reminder

The main parking lot is reserved for students and guests of the college. All staff and faculty are encouraged to utilize their assigned parking spaces as designated by the President's memo. Thank you for your cooperation.



FREE COPY



BTA President, Sam Scott (3rd-right) presenting the certificate of recognition to PCC Vice-President, Stan Welch with PCC students and maintenance personnel.

PCC Recognized By BTA For Its Beautification Efforts

During their monthly meeting last Wednesday at Palau Pacific Resort, the Belau Tourist Association (BTA) presented a certificate of recognition and a check for \$265 to Palau Community College.

PCC was recognized at the monthly meeting for its involvement in numerous beautification projects throughout Koror which include the Courthouse, Olbiil Era Kelulau, and Ministry of State, just to name a few.

BTA President Sam Scott said that PCC's effort and involvement in making Koror and Palau beautiful is the key reason why it was chosen to be the first recipient of the BTA award.

PCC-CRE Science Center Trains Local Teachers

One of the trainings that is offered during the summer by PCC-CRE Science Center is the Summer Wildlife Experience Training. This is a week-long training on vegetation types, plants, usage of the plants, and identification for students at 6-12 grade level. Only students from Koror participated in the trainings. This year for the first time, the teachers from around Palau were trained for 4 days, from June 18-21, 1999, at the Science Center. The following teachers participated in the 4 days training.

Annmary Jackson	-----	Aimeliik Elem. School
Stelinda Gabriel	-----	Airai Elem. School
Nancy Ngirarikel	-----	Harries Elem. School
Ellin Reblud	-----	Ibobang Elem. School
Christina Joseph	-----	Koror Elem. School
Ellena Sebalt	-----	Melekeok Elem. School
Rosalit Ngwal	-----	Meyuns Elem. School
Hasinta Tabelual	-----	Midszenty High School
John Ngiratiou	-----	Ngaraard Elem. School
Annmary Shiro	-----	Ngarchelong Elem School
Hirohito Renguul	-----	Ngarchelong Elem. School
Johny Tudong	-----	Ngardmau Elem. School
Juliana Ongalibang	-----	Ngchesar Elem School
Noel Ngiratmab	-----	Ngeremlengui Elem School
Umiih Sengebaw	-----	Palau Conserv. Society
Dillion Yobech	-----	Palau Conserv. Society

The main objective of this training was to extend the wildlife experience program to Babeldaob and to involve teachers in teaching youth about the plants of Babeldaob. The involvement of elders in the community is a second part of this program that will take place later and will serve to transfer traditional knowledge about Babeldaob plants and wildlife on to next generation, and this will serve to heighten community awareness. This training is especially needed at this time, as the construction of the Compact Road will begin this fall of 1999, and make access to Babeldaob's forest more difficult. Then once the road is placed, it will provide increased access to Babeldaob, and increased pressure on the forests of Palau's largest island.

Per diem, supplies & equipment were made possible through a grant from U.S. Urban & Community Forestry and local office of the Forestry of Department of Natural Resources & Development.

For more information, contact PCC-CRE at Phone #488-1037/2746, Fax #488-3307 or E-mail: Asuta@palaunet.com.

PALAU COMMUNITY COLLEGE 1999 THANKSGIVING FUNDRAISING DINNER

PALAU PACIFIC RESORT November 24, 1999

GRAND PRIZE:	Brand New Toyota Pick-Up Truck
1st Prize:	\$2,000.00
2nd Prize:	\$1,000.00
3rd Prize:	\$500.00
4th Prize:	\$250.00
5th-10th Prizes:	\$150.00

Lots of other great prizes.....

Only 500 tickets are available, so buy your ticket today!
Contact PCC Development Office at Tel: 488-2471.

Tickets will be for a buffet dinner and entertainment at
Palau Pacific Resort.

All proceeds from this fundraising event will go to the
Palau Community College Endowment Fund.

Ensure Your Future And Enroll In One Of PCC's Newest Program!!!



Study **Nursing** at
Palau Community
College. Earn an
Associate Degree that
will enable you to
become a Registered
Nurse. Don't delay.
Contact Damiana

Kunihiro at 488-2471, ext.255 for more information.

RETENTION WEB PAGE

Hard Work Gets Successful Results

Congratulations to the following students who have successfully completed all 30 hours of Reading:

Lekeok, Rosalita
Techur, Shan

Helpful Tips on Getting to Know Your Instructors!

- **Go To Class Prepared:** Read your textbooks and familiarize yourself with them. Be ready to be an active class participant. You are responsible for getting the information that is shared. Make sure that you write down any assignments or projects.
- **Attend Classes:** Don't expect your instructors to hand you their notes or give you a mini-lecture when you miss class. If missing class is unavoidable, make sure that you know a reliable student who will lend you notes. Let the instructor know why you were absent if you think you have a very good excuse. If you know you are going to be absent beforehand, inform your instructors and make arrangements for making up the work missed. It shows that you care and are responsible.
- **Be On Time For Class:** Instructors spend much time and energy preparing for class, and they usually know what information they will share within the given class time. It is disrespectful to your instructor and classmates to walk into a classroom late. Some instructors have been known to lock their doors when they begin their classes.

THANKS

Soledad Garcia and TH 101 - section 1 would like to thank Mr. Ezra Takeo, cafeteria supervisor, for speaking and sharing his culinary expertise to thier class. THANKS, EZRA!!!

• **Be Attentive In Class:** Try to sit as close to the front as you can so that you can hear what is happening. Remember that your body language says a lot about whether you are paying attention or even interested in what your instructor is saying. If your instructor writes on the board, then you should begin taking notes. If the instructor repeats some thing more than twice, make certain that you understand it because you may hear again. Never leave the class before the instructor has dismissed the class unless it is an emergency.

• **Be Actively Involved:** Instructors remember who participates in class, so try to be an active participant. Ask questions because you are there to learn.

• **Keep An Open Mind:** Don't be intimidated by your instructors, and try to find something you like about each of them. You will learn more. Instructors are unique in teaching styles, expectations, and personalities. They have a lot to offer, and it is to your advantage to learn all that you can.

Developing a good relationship with your instructors shows that you are taking responsibility for your learning experience. The better you know your instructors, the better off you will be. Don't let different viewpoints get in the way of developing good relationships. You will encounter instructors, as well as students, who are diverse. The more you open yourself up to learning about others, the more you can learn about yourself. Remember - your college experience will be as rewarding and enriching as you are willing to make it!!

Academic Calendar Fall Semester 1999

September 6th	(M)	Holiday: Labor Day
October 4th	(M)	Last Day to Remove Summer '99 Incomplete Grades
October 11th - 15th	(M-F)	Midterm Period
October 18th	(M)	Last Day for All Withdrawals
November 25th	(TH)	Holiday: Thanksgiving Day
December 10th	(F)	Last Day of Instruction
December 13th-15th	(M-W)	Final Exam Period
December 17th	(F)	Grades Due (End of Fall Semester)