

## Alumni Notes

### Class of 1987 (MOC)

Angela J. Ngirngerak



1987 - Earned a certificate in Office Clerk. Worked as the PCC Bookstore from 1987 - 1999. Then she transferred to the PCC Cafeteria where she worked until 2004.

### Class of 1998 (PCC)

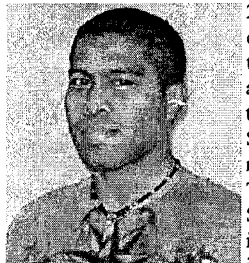
Joanne Donna Udui



1998 - Earned an AS degree in Business Accounting. Works at MOE as Educational Specialist. She started her Education Degree thru SDSU online here at PCC. She will be completing her Undergraduate degree in December 2011. She is also a former Student Trustee of PCC. She served from 1997 - 1998.

### Class of 2009 (PCC)

Victor Yatilman



2009 - Earned an AAS degree in Construction and was an active participant in the Student Support Services Program. He is now working as a Lube Technician at Buffalo Square Grease Monkey in Everett, WA and lives in Seattle, WA.

**Alumni Notes** showcases MOC & PCC alumni who are positive role models and contribute to the quality of life in their local communities. If you are that alumnus/alumna or know someone who is, please contact the PCC Development Office at telephone number 488-2471. We would like to feature you in future issues of the *Mesekiu's News*.

**Mesekiu's News**  
Palau Community College  
P.O. Box 9, Koror, Palau 96940

### Celebrating Birthdays

Jolene Ulengchong	Jan. 19
Arbedul Koshiba	Jan. 22
Dalton Thomas	Jan. 24
Epimachus Moses	Jan. 28
Winfred Recheungel	Jan. 28

Happy Birthday To You!

## Adult High Con't

the AHS program to students in addition to the regular classes they are assigned.

In making learning more interesting and fun for students, the program also organized a SCRABBLE word game tournament last semester. Cash prizes were given to the top three finishers: McVayne Joshua - Champion (\$50.00); Julie Ann Charfauros - 2nd Place (\$30.00); Chance Malchiyanged - 3rd Place (\$20.00).

For spring semester, classes will be offered at the main campus at PCC with extension programs in Airai and Peleliu states. Registration is now underway and interested individuals may call Hedrick Kual or Dana Bingklang at 488-2471 ext. 267 or Laura Mangham at 488-0826.



AHS students with Director Laura Mangham

**Exercise** for an hour, twice a week at Palau National Gym. It's fun, easy, healthy & free. You'll look and feel good.

T/Th 4:30pm - 5:30 pm

Wear right exercise attire, sport shoes, bring towel, drinking water, floor mat.

## DONORS ....

We can help you process your refund applications.

Fill the form and bring your last payday's check stub for 2010 to the Development Office. Call 488-2470 ext. 253, 252, 251

### PALAU BEACH BUNGALOWS

Peace & Relaxation Palauan Style!  
Only \$40+tax daily rate  
Private a/c bedroom&bath, living room, kitchenette  
Beachside on big island of Babeldaob  
Melekeok State  
30 minutes from Palau International Airport  
RESERVATIONS: 680.537.2533  
Swim, snorkel, jungle walks, cultural sites  
palaubeachbungalows@palaunet.com  
www.palauparadise.com

## Mesekiu Basketball

### Corner

The following is the official schedule for PCC Mesekiu Men's Basketball team.

Jan. 12 Ikelauans vs. Mesekiu (52,45)  
Jan. 17 Mesekiu vs. Meyuns RS (51, 89)  
Jan. 24 Ranchers vs. Mesekiu  
Jan. 27 Mesekiu vs. PPR Shark Attack  
Feb. 1 Meda Boyz vs. Mesekiu  
Feb. 7 Mesekiu vs. Cardinals  
Feb. 11 BOG vs. Mesekiu  
Feb. 17 Mesekiu vs. Surangel Kings  
Mar. 3 Mesekiu vs. Idid 4 Wheelers  
Mar. 8 Stingers vs. Mesekiu

Come one, come all!! Let's cheer for our boys on the PCC Mesekiu Basketball team. For updates on game scheduling and time, please contact Hamilton Maech at 488-3886 or PNOC at 488-6562

## PCC Based Scholarships Re-opened

Four PCC - Based Scholarships are now available for students to apply for. Deloitte & Touche (for Business Accounting Majors only), Pierantozzi, Roman Tmetuchl and Shell Company Scholarships are available for pick up at the Development Office. Scholarship deadline is January 31, 2011. Please stop by and see Dilubch or call 488-2470 ext. 253.

**PCC CAN HELP YOU  
UPGRADE YOUR SKILLS TO  
BOOST YOUR CAREER!  
COME TO PCC!  
Call 488-2470**

### Vacancy Announcement

- (1) Computer Technician, Computer Services Office  
Salary range: \$12,049 - 20,607 per annum
- (2) Director, Human Resources Office  
Salary range: \$18,730 - 28,833 per annum
- (3) Director, Finance  
Salary range: \$18,730 - 28,833 per annum

For application forms and information, please contact Karen Mobil at PCC Human Resources Office at 488-2470/71, ext. 227.

PCC is an Equal Opportunity Employer

FREE!!!

# Palau Community College



# MESEKIU'S NEWS



Friday, January 21, 2011

Weekly Newsletter

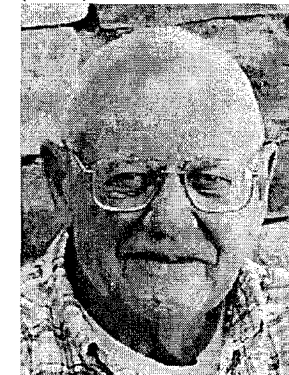
Volume 13, Issue 3

## PCC Mourns the Loss of Norval Marsh

Norval Marsh, 73, of Polson, Montana passed away on Thursday, December 16, 2010 at his daughter's residence in Wilmington. He is survived by his wife, Shirley Singleton Marsh; sons Henio Kaluu Marsh of Palau and Mako Li Marsh of DeQueen, Arkansas; daughters Christina, Remy, Cheri and Melody. He is additionally survived by three brothers, a sister, four brothers-in-law and sisters-in-law; 22 grandchildren including Marsh Henio Kaluu, and four great grandchildren.

A longtime teacher and school administrator with passion for world travel and living abroad, Mr. Marsh taught and administered schools in Colorado, Guam, and Taiwan. He was instrumental in the

creation of Palau Vocational School, Palau district (TTPI) and later became Director of Micronesian Occupational Center (TTPI) from 1970 to 1972. In 2001, he



received the Christa McAuliffe Science and Technology grant for the Inarajan Middle School to build a replica space station. The former teacher and director

will always be remembered as a generous, loving, and hardworking member of the PCC family.

## Academic Assessment Committee

The Academic Assessment Committee (AAC) held its organizational meeting on Thursday, January 13, 2011. The following faculty have been selected to be members of the AAC: School of Business - K. Skilang, V. Maui; School of Technical Education - L. Rekesesik, J. Taroy; School of Arts & Sciences in: Agriculture/Environmental Programs & General Education(science) - V. Yuji; Criminal Justice - S. Bells; Education/Library & Information Services Program - D. Olikong; Nursing Program - T. Ngirmang; Liberal Arts Program & General Education(SS, Hum, Music) - J. Chilton; General Education(math) - M. Buban; General Education(English) - M. Temaungil. The roles and responsibility of the AAC is to provide assistance to academic programs on student learning outcomes assessment, monitor progress of academic programs in

respect to assessment, review annual/semester reports on assessments, and review and make recommendations regarding assessment in the academic area. The AAC will generate action plans for improving the courses and will send completed report on assessment to Committee on Programs and Curricula (CPC). By doing so, AAC hopes to improve the Course Learning Outcomes for courses. Co-chairs for AAC are Keiden Skilang and Marianne Temaungil. Secretary is Samantha Bells.



Members of AAC meeting with Dean Timarong

## It's Never Too Late To Go Back To School

Sumiko Yaw, a 71 year old Palaun woman, has decided to come back to school to get her education. She is from Ngchesar State. Sumiko wanted to attend college, but instead married and went off to live with her husband in many different places. She has lived in Guam, within

Sumiko Con't pg. 3



Sumiko Yaw, new student this Spring 2011.

## Executive Committee Review Report

The Executive Committee met on Jan. 18, to review the accreditation Follow Up Report. Before the actual review, President Tellei had the committee members report on any new developments. A reminder was given that the annual report was due at the Development Office by January 25. He indicated that a publication project was in the works, and needed the executive committee members help. The Follow Up Report then was reviewed and discussed.



Executive Committee members reviewing report

Palau Community College is an accessible public educational institution helping to meet the technical, academic, cultural, social, and economic needs of students and communities by promoting learning opportunities and developing personal excellence.

## Adult High School Ready for New School Year

Three Adult High School (AHS) students (Shmart Adachi, Endie Toluk Estanislaus, Orachel Ngoriakl) have successfully completed all program requirements. The three are now being assisted by the AHS counselor Hedrick Kual to enroll as full time college students at Palau Community College this spring semester.

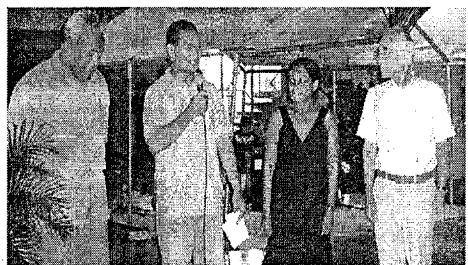
For AHS staff development, Program Director Laura Mangham passed the International Examination on Substance Abuse Treatment in Sept. 2010, and now joins counselor Kual who holds the same international level certification. Academic counseling as well as career and social counseling are critical services offered by Adult High Con't Pg. 4

## Palau International Coral Reef Center 10th Year Anniversary

PICRC held it's 10th Year Anniversary fundraiser dinner on Jan. 18, 2011. The keynote speaker, Noah Idechong, discussed how the center began. There were many challenges. It seemed that without the support of the government of Palau, the group funding this project would build the international center in the Philippines. With the help of many supporters, including then Vice President Remengesau Jr. and a joint resolution from the Senate and House of Delegates, support was garnered to bring the center to Palau. The speaker himself, authored the concept note, while late Senator Eledui was part of the technical working group. Through funding challenges and obstacles, these supporters worked hard to bring PICRC to a reality, as they knew the importance of having a center do research and science to support and validate PCS to manage and conserve our marine resources. Dr. Patrick U.Tellei,

who has chaired the Board of Directors since its inception twelve years ago, paid tribute to those who have been avid supporters of PICRC and to the partners who have been behind PICRC these past twelve years. PCC now has a Marine/Environmental Science program because of the law that created PICRC, which mandated that PCC offers this program to help Palau get our young people involved in conserving our marine resources. For the last seven years, PCC has graduated Marine/Environmental Science majors who have gone on to further their education and have completed masters programs. Thank you PICRC for being a partner in our quest to preserve our marine resources and to teach our youths about the importance of conservation.

### HAPPY 10th YEAR ANNIVERSARY PICRC.



Tellei, IP&E Rep. Marquez Jr. Gibbons-Decherong, Endo



Tellei, Blue Bay Rep. Luiu, Gibbons-Decherong, Endo



CEO Iyar, President Tellei, CSO Pres. Ngrachitei

## PCC, JICA Meet for IT Assistance

Jan. 13, 2011 (Thursday), JICA representatives and volunteers met with PCC officials to discuss possible collaboration in the area of information technology training. Representing JICA were Resident Representative Usui Taiji, Volunteer Coordinator Takechi Naoki, Senior Volunteer Kenichi Tezuka and two IT volunteers.

The meeting focused on how JICA and PCC can jointly provide information technology training utilizing the skills of the JICA volunteers. Since the two IT volunteers are currently placed in government agencies, they can conduct trainings in the evening and weekends. The proposed trainings can target both the regular students and interested individuals from the community through Continuing Education division. According to PCC IT instructor Jovahna Yaoch who attended the meeting, "...the proposed course contents are perfectly aligned with those of the regular courses." JICA is now preparing a comprehensive proposal for the college's review. Should the program materialize, it will provide for more "skills transfer" and help local capacity building.



JICA representatives with PCC staff

## SDSU Undergrads Attend Lectures

This week, Jan 17 - 21, San Diego State University Professor, Aida Allen was on campus to give lectures for students enrolled in TE 596 - 2nd Language Learners in Emerging Nation. This is the 14th course in an 18 course required program. Students are scheduled to complete on Dec. 2011.



SDSU students with instructor Allen

## BITS AND PIECES...

### ADULT HIGH SCHOOL PROGRAM

#### 2011 Airai Spring Semester

PCC Adult High School at Airai State to begin in early Spring 2011

Contact the following persons to register for the program.  
 Laura Mangham 488-0826  
 Hedrick Kual @ 488-2471 ext. 267  
 Debolyne Arurang @ 587-3511

### TAN SIU LIN PCC LIBRARY

#### HOURS of Operation:

M - Th 8:00am - 8:00pm  
 Friday 8:00am - 6:00pm  
 Saturday 9:00am - 6:00pm  
 Sunday CLOSED

Thank you for your patronage. We are here to serve the students and the community.

### Annual Report Due Jan. 25, 2011

ANNUAL REPORTS TO BE SUBMITTED BY JAN. 25, 2011

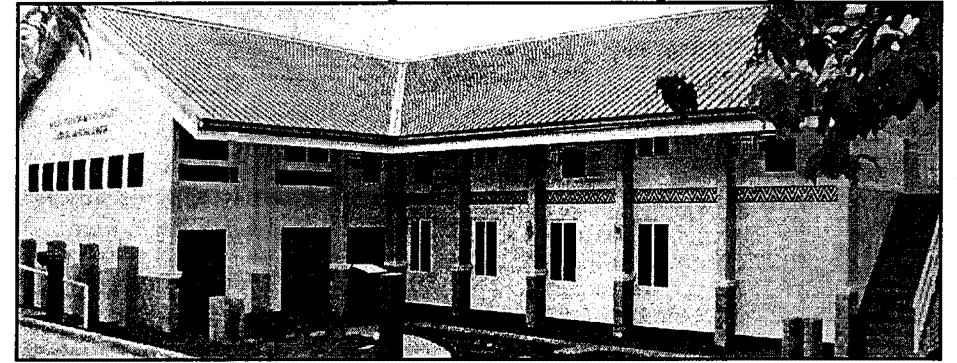
Hard and Electronic copies to the Development Office [alvinam@palau.edu](mailto:alvinam@palau.edu)

### Wanted

MESEKIU'S NEWS welcomes stories/articles/announcements from students, faculty, and staff. Submission deadline is Monday at 4:30 p.m. in hard and electronic copies to [adoraa@palau.edu](mailto:adoraa@palau.edu).

Please call ext. 252/253 if you intend to submit your article after Monday.

## PTHSE to Open this Spring 2011



### Palau Tourism & Hospitality School of Excellence (PTHSE)

A commercial kitchen, a restaurant, a bar, an alfresco area, a mock hotel suite, reception and concierge areas, and two classrooms. The first educational & training arena for PTHSE students to learn - to listen - to express - to experiment - to create - and to engage in numerous industry-based projects that support and enhance career growth. A collaborative effort between PCC, Belau Tourism Association, and the Ministry of Education.

### Sumiko con't

38 states in the United States of America, Canada, Japan, Mexico, Italy, Philippines and Puerto Rico. Now she has returned home to Palau, and wants to take English classes to improve her reading and pronunciation. According to Sumiko, she needs to continue keeping her mind active, to exercise her brain, thus keeping herself healthy both mentally and emotionally. She is a jolly person with many life experiences to share. Should you see her on campus, stop and chat with her. Welcome to PCC Sumiko!!

## New Donors for PCC Endowment



New Donor Ronnie "Smith" Pedro

works as a firefighter at ARF Station. Welcome aboard Smith.



New member Antonio B. Mariur joined the endowment

fund. He is working as a Public Safety Officer at Bureau of Public Safety.



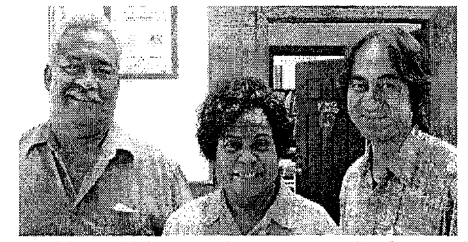
Yutaka Gibbons Jr. is the newest endowment fund member.

He is working at MOE. Currently, he is taking courses online through SDSU.

## Osaka University Graduate Students to Present Research Topic at PCC

Assistant Professor, Takashi Mita of Osaka University Global Collaboration Center (GLOCOL) at Osaka University was on campus Jan. 18, 2011 to discuss his recent work. He is working with graduate students at Osaka University in Public Health and Human Sciences to research "Lifestyle Transformation in Palau in the Age of Globalization: Contemporary Health Issues and Future Prospects." The four graduate students will accompany Prof. Mita to Palau in February to do four days of research. On Feb. 04, 2011 from 1pm - 5pm, they will present their findings at the PCC Assembly Hall. They are inviting the public, the community, the faculty and students of PCC to come and attend

the forum. They hope to have dialogue with the community to share what they have learned throughout their research. This is a trial program, and should it be successful, Prof. Mita hopes that PCC and University of Osaka can build a partnership for furthering experiential learning abroad. Assisting him is Dr. Kaori Honjo, Associate Professor-Public Health.



President Tellei, Dean Timarong, Asst. Professor Mita