

PCC Softball Schedule, Spring 2000

1 vs. 2 - Monday, January 31st
 3 vs. 4 - Wednesday, Feb. 2nd
 5 vs. 6 - Friday, Feb. 4th
 7 vs. 8 - Friday, Feb. 4th @ 7:45 pm
 5 vs. 7 - Monday, Feb. 7th
 6 vs. 8 - Wednesday, Feb. 9th
 1 vs. 3 - Friday, Feb. 11th
 2 vs. 4 - Friday, Feb. 11th @ 7:45 pm
 1 vs. 4 - Monday, Feb. 14th
 2 vs. 3 - Wednesday, Feb. 16th
 5 vs. 8 - Friday, Feb. 18th
 6 vs. 7 - Friday, Feb. 18th @ 7:45 pm
 1 vs. 5 - Monday, Feb. 21st
 2 vs. 6 - Wednesday, Feb. 23rd
 4 vs. 8 - Friday, Feb. 25th
 3 vs. 7 - Friday, Feb. 25th @ 7:45 pm
 1 vs. 6 - Monday, Feb. 28th
 2 vs. 5 - Wednesday, March 1st
 3 vs. 8 - Friday, March 3rd
 4 vs. 7 - Friday, March 3rd @ 7:45 pm
 3 vs. 6 - Monday, March 6th
 1 vs. 8 - Wednesday, March 8th
 2 vs. 7 - Friday, March 10th
 4 vs. 5 - Friday, March 10th @ 7:45 pm
 1 vs. 7 - Monday, March 13th
 2 vs. 8 - Friday, March 17th @ 5 pm
 4 vs. 6 - Friday, March 17th @ 6:30 pm
 3 vs. 5 - Friday, March 17th @ 7:30 pm
 End of regular season!

Contact Ismael at 488-3885 for more information.

Teams:

1. Cinco De Mayo
2. Yasai
3. Outsiders NWO
4. Ed. & Training
5. Admin. & Finance
6. Hijackers
7. ABU 2000
8. M-Reps




Note: All games will be held at Meyums Ball Field on MWF beginning at 6:30 pm except otherwise stated. Please see official team roster to identify your team. Note also cash prizes will be awarded to 1st, 2nd, and 3rd place finishers.

Eight New Courses Offered This Semester

- * Advanced Self-Defense
- * Basic Reading Skills
- * Music Fundamentals
- * Community Health
- * Child Health Nursing
- * General Bookkeeping
- * Microbiology
- * Recreational Diving

For more information on the above classes, please contact Meridith Randall at 488-2471, ext. 246

Celebrating Birthdays

	Epimachus Moses	January 28
	Joan Philip	January 28
	George Juarez	January 29
	Vernice Yuzi	February 2

Happy Birthday to you all!

Play Soccer!



When: Every Sunday (rain or shine)
 Where: Emmaus High School
 Time: Children (3:00 pm - 4:00 pm)
 Adult (4:00 pm - 5:00 pm)
 Who: You! Male or Female. No experience required.

For more information, call Larry Rdiall at 488-1715 or email larryr@belau.org
 Transportation can be arranged.

Color Photocopies Now Available in the PCC Library

Do you need a full color photocopy? The PCC Library can now make 8-1/2x11 inch color photocopies for \$.50 cents per page for students, and \$1.00 dollar per page for all others. The color photocopier purchase was made possible as part of the generous Palau-Australia Small Grants Scheme funding to the PCC Library for library technology and equipment upgrades.



Palau Community College MESEKIU'S NEWS



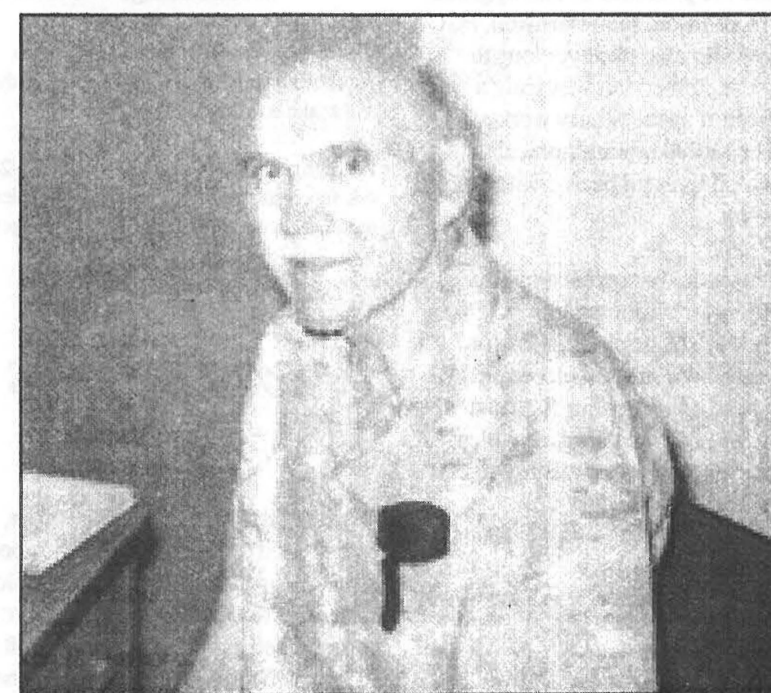
Friday, January 28, 2000

Weekly Newsletter

Volume 2, Issue 3

FREE COPY

University of Tulsa Professor Helps Social Science Department at PCC



Dr. W. Marvin Will

Dr. W. Marvin Will is in Palau for one semester as a Rotary ambassador of goodwill and is currently helping Social Science instructor, Joe Chilton, teach the *Micronesia in Transition* class.

Dr. Will arrived in Palau on December 19, 1999 on a Rotary Club scholarship and is currently living on campus in Dorm D with his wife Dee.

Dr. Will is a political science professor from the University of Tulsa who specializes in Comparative American Politics and International Politics.

While in Palau, Dr. Will is also be available to speak to any interested community groups. For more information about Dr. Will, please contact the PCC Academic Affairs Office at 488-2471, ext 245.

Six PCC Staff Teach Courses This Semester

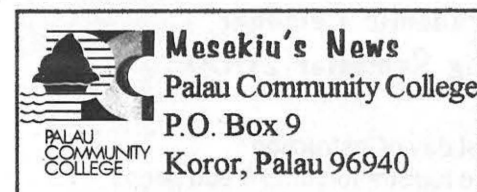
The College's ever-increasing enrollment has created the need for more instructors to help teach the expanding number of classes. Unable to hire more instructors, the college has looked internally and found a "gold mine" in its own staff pool.

"We have individuals from the staff level all the way up to the vice presidency level pitching-in to teach a class or two this semester," said the Dean of Academic Affairs Meridith Randall.

The following are the PCC staff that are currently being utilized to carry the additional classes created by the influx of new students.

Name	Class
Laura Mangham	English 90
LeoBen Teriong	Office Admin.
Stanley Welch	Bus. Accting.
Grace Alexander	Comp. Applctn.
Meridith Randall	Criminal Justice
	Intro to College
Presley Etibek	Bus. Accting.

**PCC Intramural
Softball Starting
Soon!!!
See Schedule on
Page 4**



Control of Taro Corm Rot "Obei"

By: PCC-CRE

The research-extension proposal on sustainable taro corm rot "Obei" control in the Republic of Palau was approved recently by the U.S. Department of Agriculture-Research Information System.

The taro corm rot caused by the soil borne fungus, *Pythium sp.*, is a serious disease of taro. Locally known as obei, commercial varieties of taro such as Ochab, Dois, Meril and Dungsul succumb to this malady. Affected taro shows wilting of leaves and rotting of corms.

This Hatch funded project aims to develop practical, affordable, acceptable and appropriate sustainable control strategies for taro corm rot. It involves screening, selecting and mass producing locally available varieties, elite taro hybrids and those developed at the University of Hawaii with known disease resistance and good palatability. The project will be implemented for three years.

The research project will develop techniques and identify taro varieties which are resistant to "Obei" for farmers to increase taro production in Palau which will contribute to sustainable agriculture production and economic development in the Republic of Palau.

For more information, contact PCC-CRE at Phone #488-2746, Fax #488-3307, or E-mail: ASuta@palaunet.com.

TRB Architect Donates Computer to PCC



Cliff Terry (l) of TRB Architects presenting an Apple computer to Stan Welch, PCC Vice President of Administration and Finance. Thanks Cliff!!!

PCC Library Online Now User Friendly

The PCC Library is pleased to announce that the online catalog has been successfully converted to an upgraded, user-friendly Windows version. The conversion was completed over the holiday break, just in time for Y2K!

The library wishes to acknowledge the Palau-Australia Small Grants Scheme, which made the purchase of this upgrade possible. In addition, Jane Barnwell, PCC Librarian, would also like everyone to know that the conversion was truly a mammoth effort as the library worked to convert over 16,000 bibliographical records, which have all been created in the last five years.

"The patience and persistence of Bruce Rimirch, Director of Computers and Data Processing, is to be applauded, as his expertise made the project successful. We hope everyone enjoys using the new version of our online catalog, and please ask for assistance if you have any questions," said Jane.

Attention Students

Ms. Charity Miles, a former PCC student, will be providing counseling services and tutorial assistance in English on Thursday nights from 7:00-9:00 P.M. at the counseling office beginning on January 27, 2000.

Ms. Miles graduated from Evergreen State College with a Bachelor of Arts degree. She is a trained and an experienced counselor and will be offering her counseling skills on a voluntary basis.

Students are urged to make use of this additional counseling and tutorial services available in the evening.

You may just drop in during above time or make an appointment with Sabra at 488-3036 during regular hours.

Valentine Grams

Hello there people! Guess what? Since Valentines is just around the corner, the Palau Student Organization of PCC is putting up a Candy Gram Fundraising to raise money for their organization. These are basically baskets filled with candies, roses, balloons and even stuffed animals. You can even get them separately if you desire.

Prices: Candy Grams — \$3.00 each
Flowers — \$3.00 each
Balloons — \$4.00 each
Stuffed Animals — \$5.00 each
Delivery Charge — \$1.00 each
Whole Package — \$15.00 each

Please help support the PCC-PSO by purchasing our Special Valentine Candy Grams and make a difference.

For more information, please call 488-2461 and ask for Gina, Tald, Klai and Mace or leave your name and contact number so we can get back to you.

YEARBOOKS for \$15.00

On the last issue of *Mesekiu's News*, it was advertised that the 1998-99 yearbook is selling for \$25.00 a copy. We apologize for the error and inform everyone that the correct selling price is just \$15.00 and not \$25.00. Stop by the SBA office for a copy.

The 1999-2000 yearbook staff is currently organizing and all interested students can sign up at the SBA office. The SBA welcomes ideas and suggestions for this year's yearbook. Call 488-2461 for more information.

Wetsuit For Sale

Sleeveless full-body wetsuit for sale. Medium size, black and orange with zipper. Call 488-2746 and ask for Ayan.

RETENTION WEB PAGE

By: Leslie Adachi, PCC Retention Office, Tel.#: 488-2471, ext. 247

Budget Your Time Wisely

You are required to put in 3 hours per week in Reading Lab for a total of 30 hours a semester. We want to congratulate Bryson Ngiratumerang who has successfully completed all 30 hours of reading during the second week of school. Congratulations Bryson!

Taking a Course with "I" Grade

For any student who received an incomplete "I" grade for Fall 1999, you have until February 22, 2000 to "make-up" your grade. If you miss this deadline, the "I" grade will become a permanent "F" grade. While it is true that a course can be repeated for a higher grade, it will not replace the "F" grade on your transcript.

Tips for a Successful Semester

Go to class: Sounds pretty basic, doesn't it? However, it's a concept that many students just don't get, and generally these are the students who do poorly.

Ask questions: If you are having trouble with a particular subject, don't be afraid to ask for help. Your teacher and advisor are there to help you.

Take notes: To be an effective notetaker, always pay attention in class and be ready to take note all the time during lectures.

Keep up with assignments: Staying on top of your assignments will prevent you from cramming at the end of the semester.

Review your class notes daily: If you review your notes regularly, studying for an exam will be a review process, not a learning one.

Get to know your instructors: Take time to learn what's needed to get through each subject. Study the syllabus and refer to it periodically to make sure you're on track. Find out your instructor's testing format, grading system and expectations. You'll be able to tailor your work to meet the requirements.

Visit your academic advisor: The recommended times to meet with your academic advisor are: (1) During the first week of classes. (2) Prior to mid-term exams. (3) After you receive mid-term grades. (4) To plan second term classes. (5) Prior to final ms. (6) At the end of the semester.

Learn about your College Library: Libraries can be intimidating. However big and daunting the library may seem to you, this incomparable reservoir of books and other research materials can become an invaluable tool for you in the learning process.

Manage your time wisely: Manage your time, even if it appears that you have all the time in the world. Stop procrastination before it begins! The secret of a great time manager is someone who gets work done early, so that they've got time to do a quality job.

Get adequate rest: Lack of sleep destroys your ability to concentrate. Most people need between 7-9 hours of sleep every night. Your body functions best on schedule; constant change in your sleep habit is both physically and mentally disruptive.

The PCC Library would like to thank the Business Education faculty and Academic Affairs for the donation of one shelf and three tables to the library. The shelf was put to immediate use to hold our ever-expanding fiction collection, and we plan to use the three tables in our newly expanded space. The library asks all units of the College to check with us before disposing of usable furnishings, as we may be able to make good use of them. Thanks again to Business Ed. and Meridith for helping us out!

TOEFL Bulletin for 1999-00

Test date: May 13, 2000
Registration fee: \$75.00
Deadline: March 27, 2000

Registration by mail - Mail in the form at least three weeks prior to test date.
For more information, please contact Sabra at the PCC Counseling Office at 488-3036.

Academic Calendar Spring Semester 2000

Jan. 10	First day of instruction
Jan. 10-14	Late registration/drop & add period
Feb. 22	Last day to remove Fall '99 incompletes
March 6-10	Midterm period
March 15	Holiday: Youth Day
March 20-24	Spring Break
March 31	PCC Charter Day
May 4	Last day of instruction
May 5	Holiday: Senior citizen's day
May 8-10	Final examination period
May 12	Grades due
May 19	PCC commencement exercises