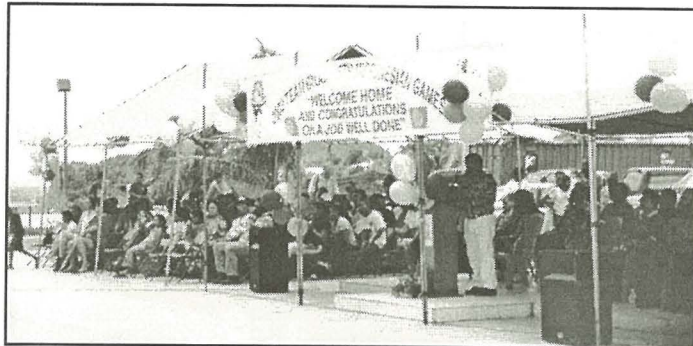


Welcome Home 2002 Micronesian Games Champions!

Yesterday, Palau's delegation to the 2002 Micronesian Games returned to a hero's welcome at the Palau International Airport. The national and traditional leadership and many other top government officials greeted the delegation and a ceremony was held in their honor. This first Micronesian Games for the new millennium saw some fierce competition, but in the end Palau came through with the highest number of medals won. Congratulations Team Palau!



High Chief Ibedul welcomes Team Palau yesterday at Palau International Airport



Women's Basketball Team got gold. They have quickly become the darlings of Team Palau due to their triumphant journey to gold!

Celebrating Birthdays

Rosita Weilbacher August 6th

Grace Alexander August 8th

Happy Birthday To You!

Mesekiu's News
Palau Community College
P.O. Box 9
Koror, Palau 96940

Office of Registrar & Records Fall Semester Activity Schedules

The Office of Registrar & Records would like to inform the public regarding this Fall Semester 2002 activities. The following schedule dates of each activity have been set to accommodate both continuing and new students. In order for all students to maximize and receive all the services that are available for them, we are requesting that you follow the following schedule:

Schedule for New Students:

July 29 th - August 2 nd (M-F)	Placement Testing for New Students
August 5 th -7 th (M-W)	Freshman Orientation, Advising & Registration
August 8 th (TH)	Pick-Up Official Class Schedule
August 19 th (M)	First Day of Instruction
August 26 th -29 th (M-F)	Late Registration/Drop & Add Period

Schedule for Continuing Students:

July 31 st - August 2 nd (W-F)	Registration for all Continuing Students
August 19 th (M)	First Day of Instruction
August 26 th -29 th (M-F)	Late Registration/Drop & Add Period

Only the continuing students may register during this time and will be done on first come, first serve basis.

Any students who missed the above scheduled dates will register during the **REGISTRATION DAY, August 15, 2002.**

For more information about registration, please contact the Office of Registrar & Records at 488 - 2470/2471, Ext. 247/257 or 274. Our office hours are from 8:00am - 5:00pm, Monday to Friday.

PCC Welcomes Home its Athletes

The entire Palau Community College family of staff and students, proudly welcomes home our 30 PCC students, faculty and staff who so ably represented Palau at the 5th Micronesian Games in Pohnpei, FSM. Your dedicated efforts and sportsmanship was commendable and we are truly proud of you. Welcome Home, Champions!



MESEKIU'S NEWS

FREE COPY



Friday, August 02, 2002

Weekly Newsletter

Volume 4, Issue 31

Language Lab Hand Over Ceremony

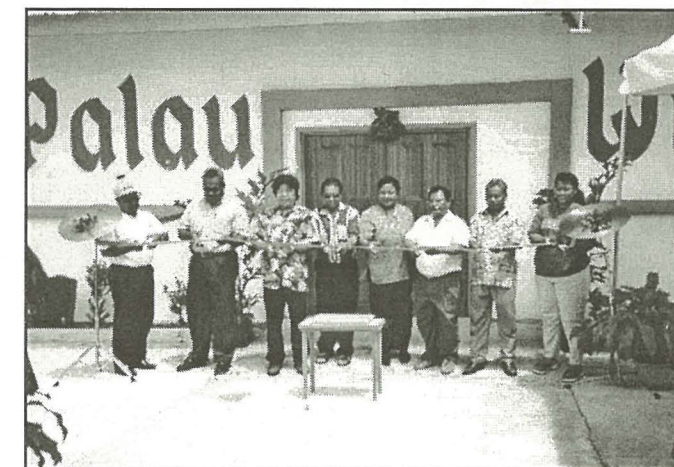
Last Thursday July 25, 2002, PCC hosted a hand-over ceremony, whereby the Japanese government formally handed over language lab equipment worth U.S. \$250,000 to Palau, which will be housed and used by Palau Community College and Palau High School. The President of the Republic Tommy E. Remengesau Jr. attended the ceremony and presented his opening remarks thanking the government of Japan and Mr. Yoshio Koshio, Charge d' Affaires, Embassy of Japan in Palau. The hand-over of the language lab equipment was symbolized by a ribbon-cutting performed by Palau President Remengesau, Charge d' Affaires Koshio, PCC President Tellei, ROP Chief of Staff Kuartei, MOE School Administration Chief K. Ngirturong, and PHS Principal R. Mechol. Immediately following the PCC ceremony, the entire delegation went over to Palau High School and also cut the ribbon of their new language lab located on the second floor of their new building adjacent to the PCC Cafeteria.

Retired Palau High School Principal Ms. Rosemary Mersai, who now teaches Japanese language classes at PCC on a part-time basis, was one of the instructors who attended a three-day training on the use and monitoring of the state-of-the-art language lab. She and several PCC personnel including Carlissa Ngedebuu (CE Language instructor), Sherman Daniel (Assoc. Dean), Teshima Sensei (Japanese Language instructor), and JICA volunteer Mr. Kazu (PCC Recreation) are now capable of operating the brand new PCC language lab. In expressing her gratitude for this new lab, Ms. Mersai said, "I can hardly wait for the new semester to begin. I am very confident that my students will benefit and learn Japanese easier and faster by utilizing the language lab". While the language lab was initially donated to enhance Japanese language courses, it will also be used in other language courses that the College may offer in the future.



ROP President Remengesau, PCC President Tellei, and Charge d' Affaires Koshio with several ROP officials as they cut the ribbon to formally open PCC's new language lab.

Palau Wind Orchestra Formally Opens at PCC



Ribbon-Cutting symbolizes opening of the Palau Wind Orchestra

On Friday July 26, 2002, the College held a ribbon-cutting ceremony outside the Palau Wind Orchestra building next to PCC Auto Mechanics shop. Many PCC faculty, staff, as well as students attended this ceremony where they witnessed the formal hand-over of Japan's donation of the Wind Orchestra to Palau. The wind orchestra is comprised of many kinds of musical instruments including pianos, drums, trumpets, saxophones, and many other instruments yet to be delivered to PCC. They are a donation from Japan which was coordinated and overseen by Kodama Sensei. During the ceremony, Kodama Sensei informed the audience that he is ever committed to continue work to obtain additional donations in the future for the Palau Wind Orchestra. He further stressed his commitment to ensure that the Palau Wind Orchestra will be prepared and be represented in a music competition to be held in Europe in 2004.

On behalf of ROP Chief of Staff Billy G. Kuartei, PCC President Patrick U. Tellei presented special remarks thanking the government of Japan and Mr. Kodama Sensei, who is the founder of Palau Wind Orchestra, for their generosity as evidenced by such projects as the Palau Wind Orchestra. This, as President Tellei noted, will truly serve to benefit PCC Students, and even any individual who is interested in the field of music. The College is proud to be the agency that houses these generous donations from Japan. If you would like to learn more about the Palau Wind Orchestra, contact PCC Academic Affairs at (680) 488-2471, extension 245.

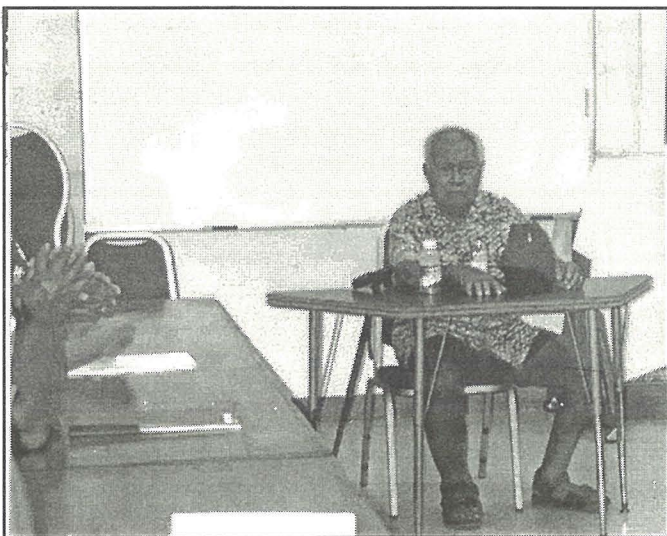
PCC-CE Offers Short Term Training On Palauan Customs

In response to the needs of the community, once again, the PCC Continuing Education Office has offered training to address the needs of the Palau Land Court Staff and Mediators to learn about Palauan customs. A subject that most Palauans should learn about and be knowledgeable of, it is even more crucial for staff and mediators of the Palau Land Court to be experts in this area as they work to help resolve potential disputes between and among Palauans.

Because the issue of determining land ownership, individual or communal, can sometimes be tedious and controversial, this training offered by the College will help Palau Land Court Staff to successfully resolve the many cases that come before the court each year. The training covers a period of two weeks at PCC whereby the trainees are able to learn, discuss and address how the Palauan custom is used in the line of work they do. A local historian and chief from the State of Ngchesar, *Madrachertochet* Paulus Sked is conducting the training. The training began on July 22, 2002, and will end on August 2, 2002.

If you are interested in Palauan customs, traditions or history, you may consider stopping by and visiting the PCC Library. We have a complete room devoted to Oceania called the Micronesia-Pacific Collection. The resources there will provide you with written documentation about facts, observations and maybe even theories on many topics relating to Palau and the Pacific region.

However, if you are interested in other topics, the Palau Community College Continuing Education office offers short-term training on just about any topic of interest. In the past, training on such diverse topics as SCUBA diving certification, fish net repairs, weaving, Palauan language, Palauan customs, hotline-crisis volunteer training, etc. have been offered. If you have a topic of interest that you would like to learn about, contact PCC Continuing Education Office at (680) 488-2471, extension 237. Whether it is training for your personal enrichment or employment related, PCC Continuing Education staff will be very happy to assist you.



Madrachertochet Paulus Sked gets ready to start Palauan Custom and Tradition Class.

Viewpoint on The Palauan Customs Training

By: Ben Roberto
Land Court Administrative Officer

My Experience in Palauan Traditional Custom Class at PCC

During the first evening of the class, it became obvious from the glow of endearment emanating from the discussion that the topic was deeply rooted in everyone's emaginary tapestry of being a Palauan. For myself, I'm always unsure and not so clear about mental identity of being a Palauan man. I decided to take the class in hope that I might get a clear vision of myself based on the expectation that the Palauan Tradition and Custom were intended to produce in Palauan man.

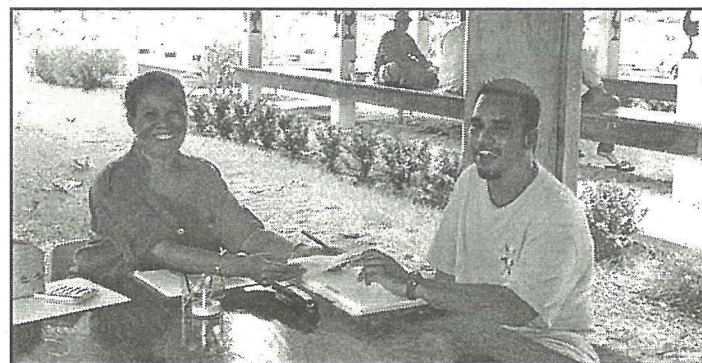
I found out after the third day of the class that I could handle only a few of the many things that I learned. I decided to perfect myself in honesty, unwavering integrity at home, work place, and to be kind and doing good when no one else is watching or would know about it.



Ben Roberto reviews a booklet to get himself ready for any questions

Signs of Fall In the Air

If you think it is still summer, think again. The signs of the upcoming 2002 fall semester are in the air. Starting Wednesday this week, the campus was quite crowded with many familiar faces of students who have been away on summer vacation. We even saw faculty somewhat reluctantly coming in to park their vehicles on our newly paved parking lot. Indeed, pre-registration for continuing students has begun, the first sure sign that a brand new school year is just around the corner. It sure looks good to have our campus hustling and bustling with activity, not that we had a quiet summer. We will surely miss the happy faces of elementary students who took advantage of our English, math, science, and art courses this summer, not to mention the conferences held at the College Cafeteria! (See back cover for 2002 fall semester schedule).



Upward Bound Alumna Returns with Doctorate Degree



UBP alumna Lynn Ikesakes holds a Doctorate Degree in Molecular Biology

PCC Upward Bound Program alumna Ms. Lynn Ikesakes can now add "Doctorate Degree" to her growing list of achievements. Ms. Lynn Ikesakes, daughter of Mr. Uro and Mrs. Maria Ikesakes, graduated from Upward Bound and Mindszenty High School with honors in 1989.

Immediately after high school, Ms. Ikesakes went on to attend San Joaquin Delta College in Stockton, CA. where she earned and secured her associate degree in Biological Science. She then continued to pursue her undergraduate study at West Chester University in the state of Pennsylvania where she earned her double bachelor's degrees in chemistry and mathematics.

In her determination to advance herself in her chosen field, Ms. Ikesakes again enrolled at the University of Pennsylvania to pursue her graduate degree where she deservedly earned her Doctorate Degree in Molecular Biology in the spring of 2001.

It was indeed a privilege for Upward Bound staff to meet Lynn this summer during her short visit to Palau. Her accomplishments in terms of her education are further proof that with proper preparation and determination, one can achieve one's educational goals. Lynn recently got married and is now living in Philadelphia where she is working for Kline-Beechum, a world-leading research based pharmaceutical company. There, Ms. Ikesakes works as head of her department where she enjoys being referred to as Dr. Lynn Ikesakes. Dr. Ikesakes hopes to return some day to Palau where she would like to help persuade the children of Palau to pursue their hopes and dreams in the future.

Upward Bound is a federally funded program that helps prepare high school students to prepare for enrollment and success in post-secondary education. Students learn academic subjects to supplement their high school courses, as well as various skills such as time management, study skills, money management, among others. Each year Upward Bound recruits new students into the program where they are taught for two years. If you would like to learn more about the PCC Upward Bound Program and its services and programs, contact Ms. Helen Immanuel, UB Assistant Director, at (680) 488-2471, extension 260, or (680) 488-2962.

New Scholarship Opportunity

Pacific Islands Development Bank is offering partial scholarships to students around Micronesia, which includes Palau, Yap, Pohnpei, Kosrae, Chuuk, Marshall Islands, CNMI, and Guam. One student from each island will be selected to receive the amount of \$500.00 scholarship. Priority will be given to students Majoring in developmental planning or economic development analysis. Other students majoring in economics and business may also apply for this scholarship.

REQUIREMENTS:

- Show proof of citizenship and residency of each island state that the individual is from.
- Submit High School or College Transcript.
- Two letters of Recommendation.
- Copy of Enrollment Acceptance Letter.
- Short resume including the reason for the education major.

Complete application and supporting documents can be obtained and must be submitted to the following address before August 10, 2002.

Pacific Islands Development Bank
GCIC Building, Suite 204
414 West Soledad Avenue
Hagatna, Guam 96910
Tel: (671) 477 - 0047
Fax: (671) 477 - 0067
Email: pidbank@kuentos.guam.net
Email: rkimura@ite.net

TOEFL Test Dates	
2002 - 2003	
Test Dates	Registration Deadline
September 14, 2002	(receipt date at the TOEFL Office)
October 19, 2002	July 29, 2002
January 18, 2003	September 2, 2002
May 10, 2003	December 2, 2002
	March 24, 2003
Score Report Mailing Dates	
	October 23, 2002
	November 27, 2002
	February 26, 2003
	June 18, 2003

• The Test of Written English (TWE) is given with the TOEFL test. It is a 30-minute writing test that is required of everyone taking the paper-based test. The TWE score is reported separately and is not added to the TOEFL score.

• Test Fee - \$110.00

• Information Booklet and Registration forms are now available at the Student Life Office.