

President Tellei and Faculty Attend Conference on Distance Learning in Guam

PCC President Patrick Tellei and four PCC faculty members traveled to Guam last month to attend a Distance Learning conference that was sponsored by the Sasakawa Peace Foundation. Dr. Joel Miles, Epimachus Moses, Marianne Temaungil and Vernice Yuzi attended the Agriculture Challenge Grant conference which was aimed at developing a distance learning program, whereby participants/students can take on-line courses in Education and Agriculture in their respective countries, thus enabling them to obtain their degrees in the said fields without leaving their homes countries or putting their professional careers on hold. School officials from the University of Guam and the College of Micronesia-FSM also attended the conference as the two institutions along with Palau Community College will have to eventually align and articulate their agriculture and education program for the distance learning program between all three to be successful.



Dr. Joel Miles

While in Guam, Dr. Miles also represented the Palau Natural Resources Council to a conservation conference. Dr. Miles' report during the conference included an update on Sustainable Agriculture, Bio-Diversity Protection, Water Quality and Quantity, as well as Invasive Species in Palau.

The Pacific Basin Association Conservation (PBAC) conference also saw participants from American Samoa, Guam, CNMI, Pohnpei, and Kosrae.

LIBRARY NEWS

The PCC Library staff would like to take this opportunity to welcome the new freshmen and returning students!! We would also like to briefly share with you what you can expect to find in your Palau Community College Library. Below you will find the different sections and the Library Technician or Aide that services the area. Each week you will also find a listing of new materials posted right here in the Mesekiu's News or posted just outside the library on our bulletin board.

Computer Technology Center: (9 computers)

1. Check your e-mail / 30 minute time limit
 2. Research / 1 hour time limit
- You may be limited to 30 minutes because research has priority.
 - You may also be asked to free up a computer if you are using e-mail.
 - You must have a LIBRARY CARD to use the computers and will be asked to provide your number upon signing in.

SECTIONS:

Children's Area/Circulation Area: Miriam Kual, Library Technician
Periodical Section/Media: Ms. Pioria Faungy, Media Specialist
Micronesian Pacific Collection: Ms. Imengel Mad, Library Technician
Cataloging/ General Collection: Grace Merong, Library Technician
Circulation/Book Orders/Inter-Library Loan: Ms. Sunshine Garcia, Library Assistant
Librarian: Ms. Debra Neas

Library Hours

Monday-Friday:	8:00am - 8:00pm
Saturday:	9:00am - 6:00pm
Sunday:	12:00am - 6:00pm

Palau Community College MESEKIU'S NEWS

FREE COPY



Friday, August 16, 2002

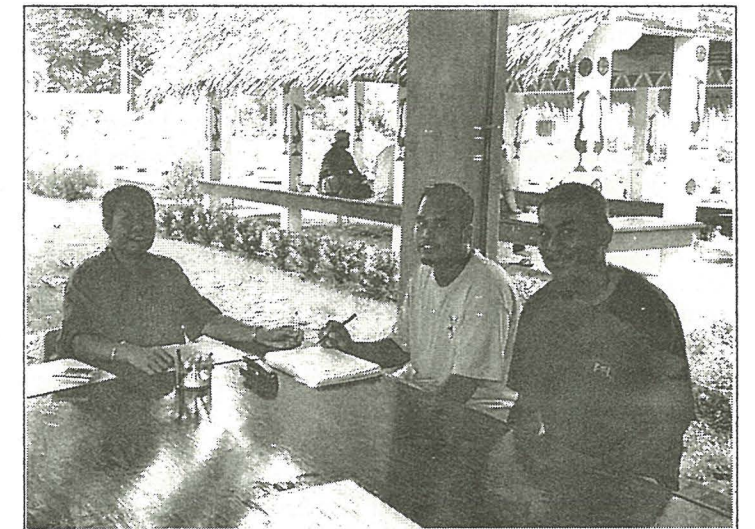
Weekly Newsletter

Volume 4, Issue 33

New Registrar's Office Eases Frustrations, Creates More Smiles During Registration Period

The amount of time students spend waiting in line to register for courses has been significantly reduced, thanks to the creation of the Registrar's office. Previously, the Office of Admissions and Financial Aid was tasked with the heavy load of trying to register new and returning students, while at the same time, processing student applications for admissions and also determining financial aid and the amount of award to give to each individual student. With the creation of the registrar's office, we now appropriately have a separate office that is tasked with the registration of students, thus avoiding the "bottleneck" effect which happens when students converge at one office to do multiple things all at once, something that has become a common occurrence during the registration period and has frustrated many students who end up standing in long queues.

Many thanks to Lesley Adachi, Retention Office Coordinator for taking on the additional responsibility as the head of the Registrar's Office. Additional thanks to her staff of Teory Idechong, Keith Ignacio and Lourdes Reksid who have worked tirelessly to make this Fall semester's beginning and the registration process a smooth one.



Frustrated no more. Bennie Brel(i) of Admissions and Financial Aid Office happily advises students Christian Aquino and Beau Ezekeas, who seem equally happy, on what classes to take.

Celebrating Birthdays



Edmund Uehara	August 19
Presley Etibek	August 21
Vincent Ito	August 23

Happy Birthday To You!

Mesekiu's News
Palau Community College
P.O. Box 9
Koror, Palau 96940

Thank You So Much For Feeding Us!!!



Rosita Weilbacher

We arrived by the bus-load but that did not deter Rosita Weilbacher (PCC cafeteria staff) and her family from preparing tons of food to feed the 250-strong Team Palau athletes during one Sunday evening in Pohnpei during the 2002 Micronesian Games. A million thanks to Rosita Weilbacher and her family for preparing a feast of BBQed chicken, ribs, and fish, with fried rice, macaroni salad and much more. It was definitely a "feast of champions" as we have a lot of our medals to show for it! THANK YOU VERY MUCH! Kaselehlie! Team Palau

WELCOME TO ALL PCC STUDENTS

The PCC President, on behalf of the Board, faculty and staff would like to welcome all continuing, returning, and especially the new students for the Fall 2002 semester here at Palau Community College. The entire Palau Community College family wish to congratulate you for a wise decision to begin your post-secondary education right here at home, enrolling at PCC. We challenge all of you to take every opportunity the College has to offer you. You have only two years to live out your college experience here at PCC, but a whole lifetime to look back on it, make the best of it. Through your years of college experience here at PCC, the PCC family is ready to assist you in every way we can.

The PCC Student Body Association (SBA) can also help you start off on the right track to a memorable college experience. Joining the SBA organizations and campus clubs will provide you, especially the freshmen, with an easy and fun way to meet and make new friends. It is highly recommended that each freshman join and be a part of the College through the following clubs and organizations:

ORGANIZATION:

Palauan Student Organization
Yap Student Organization
Pohnpei Student Organization
Chuuk Student Organization
Kosrae Student Organization

CLUB:

Agriculture Club
Tourism Club
Fishing Club
Friendly Club

Tabacco Use Among Young People in Palau and the Pacific

By: Terry Ngirmang R.N.

Issue: Tabacco use is a preventable health risk and in many countries it is the leading cause of preventable death. In Palau, tabacco use among young people is increasing at an alarming rate. Forty-three percent (43.3%) of all students are frequent tabacco users and most of these youth started using tabacco as early as five years of age.

Description: The Palau Youth Tabacco Survey Report was made available with the help of CDC funding and the assistance of Palau Ministry of Health and Education and members of the Coalition for a Tabacco Free Palau.

Lessons Learned: The survey showed that two-third (2/3) of high school students (67.7%) in Palau are current users of tabacco; they chew betelnut with tabacco.

The survey also revealed that about half of the students surveyed thought that chewing betelnut with tabacco was either less harmful than smoking cigarette or chewing smokeless tabacco.

The survey also revealed that more than half of these minors (students) currently using tabacco obtained their tabacco from family members/ friends or acquaintances and the rest were able to buy their own cigarettes from stores. Less than half of these minors/ students who tried to buy cigarettes/ smokeless tabacco in stores were asked to show proof of age.

Recommendation: The next step is to keep encouraging vendors to enforce the existing laws about tabacco sales by doing regular re-visitations to non-compliant vendors, continuing with community education/awareness about the effects of tabacco, and also developing cessation programs.



Terry Ngirmang showing through pictures just some of the many reasons why tobacco use can be harmful to one's health.

CE Internship Reminder

by: Vincent Ito

You are to be congratulated for the accomplishments that you have made in your studies which now enables you to take your Internship training this semester. As you know, Internship is a 4-credit training required in order for you to graduate in your respective field of studies. It provides you with the opportunity to gain practical experience in the field that you've studied in. In order for you to succeed in the training with no unnecessary distractions and misunderstandings, the following are reminders that you should keep in mind as an Internship trainee:

1. Internship is a final requirement of students who have completed all of their course requirements on campus or at most have one remaining to be taken.
2. It provides student with the opportunity to acquire practical experience in their field of study while earning the required 4-credits to graduate.
3. It is not an option or an elective; it must be taken like any other required courses such as math, english, science, etc., by students in all program majors except for Liberal arts, Nursing and Education programs.
4. It requires no less than 192 contact hours for the semester. However, as part of the training arrangement with employers, students are strongly encouraged to continue their training for the duration of the semester even after they have earned the required minimum number of hours.
5. Compensation for students is not required and is not an integral part of the Internship training arrangement. That is, the commitment one puts in as an Internship trainee does not depend on whether one is getting paid or not.
6. Salary compensation of students that are negotiated are purely voluntary on the employer part. Workforce Investment Act (WIA) may also contribute to internship funding depending on WIA programs criteria, among which are 1) the availability of funds 2) ability of the employer to contribute half of the salary expense of the trainee, and 3) the potential for long term employment of the trainee.
7. Your success in the training requires commitment, dedication and your willingness to learn the technical as well as all other critical skills required of your occupation, which in the end will make you a potentially desirable prospect to hire as a permanent employee.

If you have any questions or comments regarding these requirements of the program, please contact me, Vincent Ito, Extension Program Coordinator for full information. (680) 488 - 2470/ Extension 238.

ADULT HIGH SCHOOL 2002 Fall Calendar

August 12 th - 22 nd	Pre-registration, <i>Continuing Students</i>
August 26 th - 29 th	Registration; New and Cont. Students
August 28 th	Teachers' Orientation
August 29 th	Students' Orientation
September 2 nd	Holiday: Labor Day
September 3 rd	First Day of Instruction
October 14 th - 17 th	Mid-Term Period
October 21 st - 24 th	Mid-Term Break - No Classes
November 27 th	Last Day of instruction
November 28 th	Holiday: Thanksgiving Day
December 2 nd - 4 th	Final Exam Period

2002 FALL TERM CLASS SCHEDULE

Time	Monday	Tuesday	Wednesday	Thursday
8:00-9:50 AM	Community Resources-I; Occupational Knowledge			
10:00-11:50AM	English I English II			
LUNCH 1:00-2:50PM	Health; Consumer Economics			
3:00-4:50PM	Oriental Science; Community Resources-2; Algebra			
5:00-6:50PM	Government & Law			

Note: All classes are from Monday through Thursday.

Health Announcement & Warning

By: Division of Environmental Health

On August 2, 2002, the Division of Environmental Health went around Palau distributing announcement and warning signs to the public to warn the public of a confirmed out-break of Dengue Fever. Therefore, the division of environmental health urges the public to carefully inspect around homes and the surrounding areas of the house for possible and suspected breeding sites of mosquito. The following is the proper way to help prevent such out-break:

- "CDE" - Cover, Discard or Empty containers that can store hold water (i.e water catchment tank, drums, coolers, tires, bottles, flower pots, pet dishes.)
- "Dengue Patrol" - Patrol around your house every morning and evening looking for possible mosquito breeding places and eliminating them.
- Use mosquito repellent to prevent yourself from getting bitten.
- Limit your outings.

ATTENTION ALL STUDENTS

The following classes are now closed:

BA110-1	CJ112-1	CS100-3
BA110-2	CO111-1	CS121A-1
BA122-2	CO111-2	CS121A-2
BA130-1	CS100-1	EN093-2
BA130-2	CS100-2	EN093-3
EN095-2	EN149-1	JP109-2
EN095-3	HP180-1	MA090-3
EN095-4	HP181-1	MA090-5
EN120-1	HP181-2	MA095-2
EN120-2	JP109-1	MA100-1
MA110-1	OA095-1	OA112-2
OA211-1	SS104-1	SS104-2

CANCELLED CLASSES:

TH218	CT222	ET222
GE225	SC239	SC277
ED240		

Due to some changes in the class schedule, all students who have registered for fall 2002 need to pick-up their new class schedules and up-date your classes. All students must pick-up the new schedule before the add/drop period.

PATA Micronesia Education Committee Offer Scholarships

The following is a letter from Diane Bachelder, PATA Micronesia Chapter Education Committee Chairman to President Tellei announcing the three scholarship opportunities:

The PATA Micronesia Education Committee is pleased to announce that we are offering three scholarships to be awarded during our September meeting to be held in Kosrae.

Our first scholarship, PATA Micronesia Regional Scholarship, is open to any student attending one of our six regional educational institutions and pursuing a tourism, hospitality, or environmental related course of study. We will be offering one \$500 scholarship for each of the educational institutions, for a total of \$3000.

The second scholarship, PATA Micronesia Tourism Scholarship, is available for any student pursuing a tourism, hospitality, or environmental related course of study and is a citizen of the island of Saipan. This is a \$500 scholarship.

The third scholarship, PATA Micronesia Tourism Scholarship, is available for any student pursuing a tourism, hospitality, or environmental related course of study and is a citizen of the island of Kosrae. This is a \$500 scholarship.

I am sending the PATA Micronesia Regional Scholarship application to you with this message. Please note that this is for a total of 6 scholarships, one for each regional educational institution.

I will be sending the other two scholarships to you separately so there is no confusion as to which application you are receiving.

If you have any questions about these or any of the scholarships that we offer, please do not hesitate to contact me.

More information about these scholarship opportunities can be obtained at the Development Office behind the library.