

PCC STAFF TO SERVE IN PROFESSIONAL DEVELOPMENT SEMINAR

This year, Palau Community College will assist in the Professional Development Seminar. Among the PCC faculty and staff, the following were identified/asked to serve in the seminar:

-Alvina Timarong - Chairperson
-Lesley Adachi - Vice Chairperson
-Vernice Rechebei
-Helen Immanuel
-Larry Wakakoro
-Midori Mersai

-Marianne Mesengei
-Teory Idechong
-Keith Ignacio

Program and Publicity Committee

-Jay Olegeriil - Chair
-Grace Alexander - V. Chairperson
-Tzuchie Tadao
-Ayano Baules
-Bruce Rimirch
-Dilubch Samil
-Hulda Lukas

-Armstrong Debelbot
-Roger Vergara
-Huan Anastacio
-Fidelia Tengoll
-Leilanie Senior
-Wilma Tmecherur

Celebrating Birthdays



Edmund Uehara August 19
Presley Etibek August 21
Vincent Ito August 23

Happy Birthday to you!!!

Mesekiu's News
Palau Community College
P.O. Box 9
Koror, Palau 96940

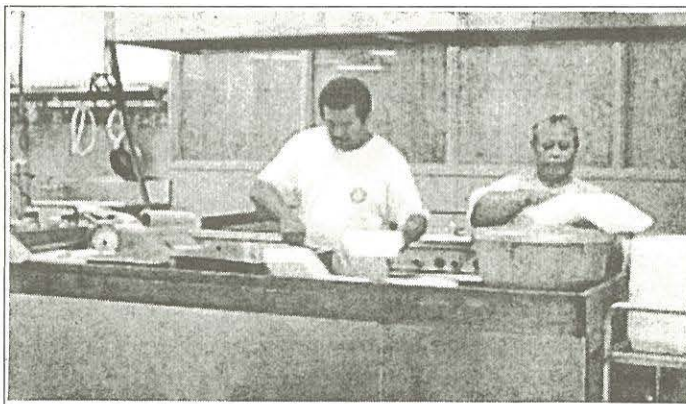
PCC Maintenance Update

The Maintenance office has been doing several repair works around the campus. The following are some of the projects that have been completed and/or on-going:

-Paintings have been done on Science Lab and classrooms. Air conditions have been repaired and serviced for the Biological Lab and Rooms-65, 66, 68 and 69. Toursim Snack bar needs expandable divider and counter and ceiling repair. Exhaust fan was installed in Criminal Justice classroom to cool storage. Agriculture department needs Incubator for a separate switch box. Computer tables are completed.

-Counseling Office and Dorm A, B, and C leaks are patched-up. Dorm A rooms are repainted. Walls in Counseling office are repaired. Emergency lights were also intalled in dorms. Generator storage was constructed. Windows toward TV room are sealed.

-Cafeteria Meat Cutter Storage is completed. Ice Maker machine is installed. Orchestra Building construction is 85% completed. Child Day Care Center construction is 90% completed. Small Engine Classroom and Maintenance Office repairs are completed. Wirings for Maintenance, Logistics and Criminal Justice buildings are installed. Carpentry Shop lights are replaced. Old Science classroom is demolished. Tourism and Hospitality project is completed.



This summer has been busy for the PCC cafeteria staff. They prepared three meals a day, everyday for the dorm residents. On top of that they received requests for lunches and snacks for various workshops and conventions. Among them are Palau National Youth Committee (PNYC), student Leadership Institute (SLI), PARBICA workshop, and Disability Convention.



Palau Community College MESEKIU'S NEWS

FREE COPY



Friday, August 17, 2001

Weekly Newsletter

Volume 3, Issue 33

STUDENT EXCHANGE MEMORANDUM OF UNDERSTANDING BETWEEN PALAU COMMUNITY COLLEGE AND THE UNIVERSITY OF THE RYUKYUS

Palau Community College and the University of the Ryukyus shall exchange undergraduate and graduate students under this memorandum based on the International Exchange Agreement between Palau Community College and the University of the Ryukyus signed on July 15, 2001.

1. Number of Exchange Students

Each university may send and accept under this memorandum not more than one student each academic year.

2. Duration of Stay

Duration of stay of the exchange student at the host university shall be in principle for up to one academic year.

3. Selection of Exchange Students and Acceptance Procedures

The student participating in the exchange program under the terms of this memorandum shall be selected initially by the home university, and the host university shall make final admission decisions in each case.

4. Study Program

The study program suitable for each student shall be determined by the host university with the student's academic background and preferences taken into consideration.

5. Status of Exchange Students

Each university shall accept the exchange student to the host university as a non-regular student who does not aim at obtaining a degree in the host university.

6. Academic Record and Accreditation

The host university shall evaluate the academic performance of each student pursuant to its rules and shall send to the home university the academic record or transcript of each exchange student. The home university may give credit to each student in accordance with its requirements.

7) Waiver of Tuition and Fees

Each host university shall provide waiver of examination fee, admission fee, and tuition for the exchange students.

8) Financial Responsibility

The exchange student shall take out comprehensive health insurance which is valid in the host university and shall be responsible for such expenses as travel, accommodation, and health care.

9) Accommodation

The host university shall do its possible to secure an appropriate accommodation for the exchange students.

10) This memorandum shall not ensure the availability of scholarships for the exchange student, but each university shall endeavor to provide useful information on scholarship programs that will financially assist the student.

11) This memorandum is subject to revision or annulment by mutual agreement, although such action shall only be taken after mutual consultation in order to avoid any possible inconvenience to the other party.

12. This memorandum shall become effective when the representatives of both universities have affixed their signature thereto and shall be effective for five years. In the absence of six months written notice of the annulment to the other party, the current memorandum shall be renewed automatically for the same duration.

13. This memorandum is written in English and Japanese. Both English and Japanese documents shall have equal validity.

/S/
Patrick Ubal Tellei
President
Palau Community College

/S/
Moshin Morita
President
University of Ryukyus

National University Online Programs

Dr. Janet Littrell, Vice President for Regional Operations, will be offering a seminar about the online degree programs at National University (NU). This seminar will be held on August 27, 2001 from 7 to 9:30 p.m at the PCC Cafetorium.

The National University is based in San Diego, California. It has 27 campuses throughout California with an FTE of 18,000 students. NU has a distinctive and intensive one-course-per-month format for online degree programs that allows adults to complete graduate and undergraduate programs in an accelerated time frame. Students do not have to leave home, family, or work to pursue any of the degree programs.

More information about National University may be found at: www.nu.edu

For specific information about National University's Online Degree Programs, visit: www.online.edu

For personal assistance, send email to: pacificinfo@nu.edu

The following are online programs offered by National University:

Masters

MA in Teaching
Global MBA
Masters in Forensic Sciences
Masters of Science in Nursing
MS in Educational Technology
MS in Electronic Commerce
MS in Instructional Technology

Bachelors

BA in Business Administration
BA with Major a in Global Studies
BS with a Major in C. Justice
BS in Nursing

For additional information, contact *Jay Olegeriil* at PCC, telephone number 488-2471.

National University extends appreciation to Palau Community College President Patrick Tellei and PCC staff for their assistance with the seminar.

RETENTION WEB PAGE

PCC Retention Office, Tel. #: 488-2471, ext. 247

Attention Contributing Writers

Student, faculty and staff writers are asked to submit their articles to Armstrong or Dilubch at the Development Office no later than 3:30 p.m. on Wednesdays.

Matson Navigation Company Scholarship Academic Year: 2001-2002

In honor of it's fifth anniversary on Guam, Matson Navigation Company is sponsoring five (5) \$2,000.00 scholarships for University of Guam-College of Business and Public Administration undergraduate students. The scholarship will be based on academic standing. Awards will be disbursed accordingly- One award will go to a recipient from each of the four islands/states and one award At-Large from any of the four islands/states.

Criteria

Applicants must:

- 1) Be a resident of Guam, CNMI, FSM, or Palau;
- 2) Have a cumulative Grade Point Average (GPA) of 3.0; and
- 3) Must be enrolled at the University of Guam full-time (12 credits)

Application Process

- Complete application form
- Submit an official high school/college transcript
- Submit three (3) letters of recommendations (please do not use relatives as references)
- Submit application with pertinent documents to the UOG Financial Aid Office on or before June 27, 2001(Deadline has been extended).

Selection

A Scholarship Screening Committee from UOG (consisting of a member from the Financial Aid Office, the Endowment Foundation, and the Dean of the CBPA) will recommend to the Matson Scholarship Selection Committee, the three (3) best qualified candidates from all four islands/states, and At-Large from any of the four islands/states. Matson will make the final selection.

Interested individual may contact Jay Olegeriil at PCC # 488-2470.

PCC ADULT HIGH SCHOOL Public Announcement

To all Continuing Students:

The Palau Community College Adult High School program is announcing to all the continuing students that pre-registration for Fall Semester 2001 has started and is on-going until Friday, August 24th. Students planning to attend this Fall Semester must stop by the office or call Senna Azuma or Laura Mangham to pre-register.

To all New Students:

Any Palauan, 18 years old or older who wishes to attend the PCC Adult High School and plans to attend this Fall Semester, may pick up an application form from the PCC Adult High School office.

Below is the schedule for the Fall Semester:

Pre-registration of Continuing Students	-	August 1-24
Application processing of New Students	-	August 1-28
Late Registration	-	September 4-7
Registration and Orientation of New Students	-	August 29
First Day of Instruction	-	September 10
Independence Day (Holiday)	-	October 1
Midterm Period	-	October 17-18
Midterm Break (No Classes)	-	October 22-26
Midterm Reports Due	-	October 25
Thanksgiving Break (No Classes)	-	November 22-23
Final Exam Period	-	December 4-6
Grades Due	-	December 13

Please Contact Senna Azuma or Laura Mangham at 488-2471, ext. 244 or 267 if you have any questions.

Vacancy Announcements

Position:	Librarian
Salary:	\$16,010.00 - \$18,730.00 per annum depending on qualifications.
Positions:	English Instructor Science Instructor
Salary:	\$14,233.00 - \$21,068.00 per annum depending on qualifications.

Application forms may be obtained from Palau Community College's Human Resources Office. Send completed application form with transcript, resume, and verification of previous employment to:

Palau Community College, Human Resources office P.O. Box 9, Koror, Palau 96940

Detailed Budget Tables for Fiscal 2002

April 2001 NASULGC Newline Vol 10 Number 4

U.S. Department of Education Student Aid Programs

	FY 2001 Level	FY 2002 Budget Request	% Change
Pell Grants (overall appropriations)	\$8,756,000,000	\$9,756,000,000	11.4
Pell Grants (maximum award, in dollars)	3,750	3,850	2.7
Federal Work Study	1,011,000,000	1,011,000,000	0.0
TRIO	730,000,000	780,000,000	6.8
Graduate Assistance in Areas of National Need and Javits Fellowships	41,000,000	41,000,000	0.0
Leveraging Educational Assistance Partnerships	55,000,000	55,000,000	0.0
Perkins Loans	160,000,000	160,000,000	0.0
Supplemental Educational Opportunity Grants	691,000,000	691,000,000	0.0

U.S. Department of Education International Education Programs

	FY 2001 Level	FY 2002 Budget Request	% Change
International Ed. and Foreign Language Studies	\$68,000,000	68,000,000	0.0
-Title XI A & B	67,000,000	67,000,000	0.0
-Title XI C (Institute for Int'l Public Policy)	1,000,000	1,000,000	0.0
Fulbright-Hays	10,000,000	10,000,000	0.0
Fund for Improvement of Postsecondary Ed. (FIPSE) - competitive grants	31,200,000 ^a	51,200,000 ^b	65.0
Learning Anytime Anywhere Partnerships (LAAP)	30,000,000	0 ^c	-100.0
Foreign Language Assistance Program	14,000,000	0 ^d	-100.0
International Education Exchange Program	10,000,000	0	-100.0

a. \$31.2 million for competitive grants is part of the fund's overall \$146.7 million appropriation.

b. For competitive grants only, including LAAP continuation grants. See #d

c. Proposed to be consolidated into FIPSE for continuation grants only.

d. Proposed to be consolidated with bilingual and immigrant education programs into a state grant program.