

## Alumni Notes

### Class of 1972 (MOC)

Shobert Skang-



1972 MOC graduate with a Vocational Certificate of Achievement (VCA) in Small Engine Repair (SER). Skang has worked for 23 years as the Transportation Coordinator for Palau Community Action Agency (PCAA).

### Class of 1983 (MOC)

Lory Ngemaes-



1983 MOC graduate with a Certificate of Achievement (CA) in General Office Clerk (GOC). Ngemaes is a technician with the Palau Community Action Agency (PCAA).

### Class of 2003 (PCC)

Melan-Jane Pedro-



2003 PCC graduate with an Associate of Science (AS) degree in Early Childhood Education (EDEC). Pedro is a coordinator for Palau Head Start Program.

**Alumni Notes** showcases MOC&PCC alumni who contribute to the quality of life in their local community and are positive role models for other PCC students to emulate. If you are that alumni or know someone who is, please contact the PCC Development Office at telephone number 488-2471. We would like to feature you in future issues of the *Mesekiu's News*.

**Mesekiu's News**  
Palau Community College  
P.O. Box 9, Koror, Palau 96940

### Celebrating Birthdays

Diliaur Franz Aug 26  
Josepha Tutii Aug 28



**Happy Birthday To You!**

## Trying to Cope with the Power Crisis



Instructor Wilma Sukrad (*barely visible-right*) does her utmost to provide instructions to her students in a classroom dimly lit by a single lightbulb. Due to the recent power crisis on island, PCC started its fall semester classes having to contend with the scheduled blackouts. Evening classes have been most affected.

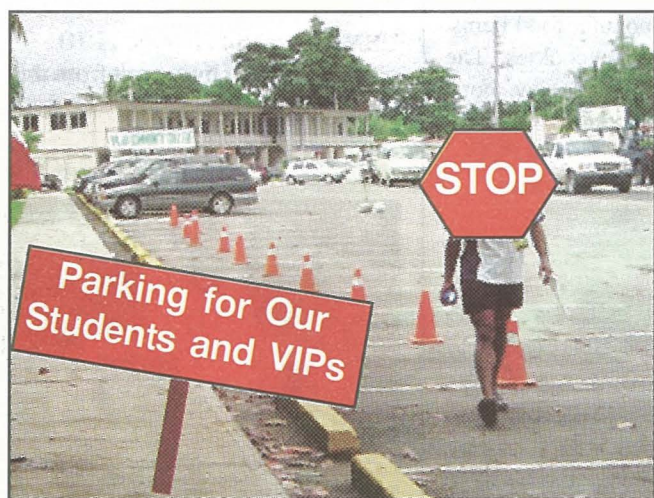


To avoid letting the power outages disrupt registration process, Bennie Brel of the Admissions and Financial Aid Office sets her table under a breadfruit tree outside her office and continues to register students. Fall 2006 enrollment is currently at 624.



PCC artist Vince Akiwo (r) whose current assignment has him working on the outside wall of *Btaches* building is one of only a handful of staff unaffected by the power outages. With him is the Director of Physical Plant Clement Kazuma

## PARKING REMINDER!



The main car park in front of the college is reserved for our students and special guests. Please use alternate parking areas behind *Miich* building, front of *Btaches* building, between *Tekrar*, *Sebus* and *Smuuch* buildings. Also, please fight the urge to park in those conveniently located and extra spacious handicap parking space if you are not qualified. For assistance in locating the appropriate parking areas, contact ext. 258.

Visit PCC website: [www.palau.edu](http://www.palau.edu) and learn all about Palau's only institution of higher education. While there, check out the PCC weekly newsletter, *Mesekiu's News*, including back issues!

Still guessing what CBTTO is? Ok, you have until the next issue.



# Palau Community College MESEKIU'S NEWS

FREE COPY



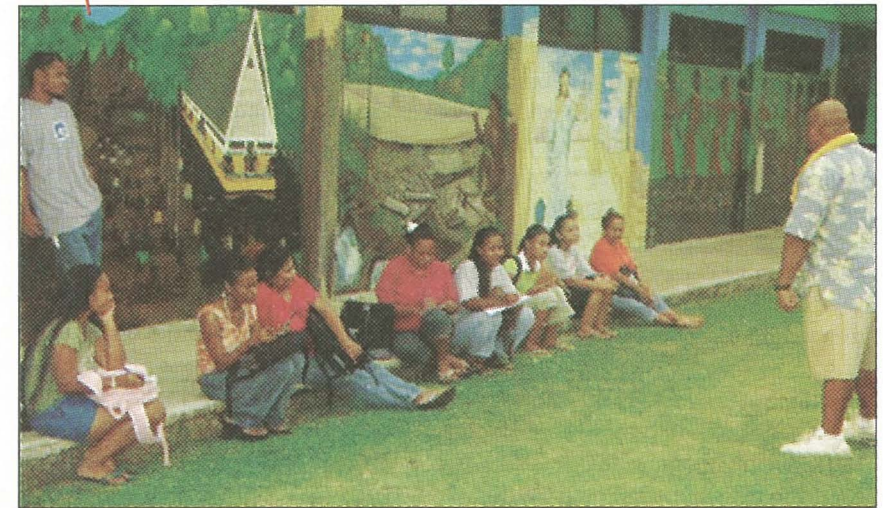
Friday, August 25, 2006

Weekly Newsletter

Volume 8, Issue 34



## Power Crisis Forces 39 Classes Outdoors



Everett Belelai (r) computer literacy instructor conducts the first session of his evening class on the veranda just outside his classroom as it was too dark indoors with the power outage.

Nearly forty classes scheduled in the evening time had to be held outdoors during their first day of fall 2006 session due to the recent power outages which made it next to impossible to conduct classes indoors.

Thirty-nine classes (39), mostly education and computer classes scheduled during the evening hours- from 5 pm on- to accommodate students who hold full time positions during the day, were all affected.

Dean of Academic Affairs Alvina Timarong said that of the thirty nine classes held in the evening, the ones that feel the impact of the outages most are the computer classes. She said that there are a number of computer classes being offered this fall semester and she hopes that the power will soon be back to normal so the classes won't fall too far behind on their course schedules already outlined for the entire fall semester.

"Other classes that are mostly lecture-based can manage as we have already devised temporary lighting system to all evening classes. But it is the lab for our computer classes that concerns me most as instructions will be seriously compromised without the use of computers," she said anxiously.



Students take turn using a flashlight to review their notes in Adelle Isechal's (l) science class yesterday evening.

## Fall Enrollment at 624, Expected to Continue to Rise

As late registration draws to a close today, the latest numbers out the registrar's office put the enrollment at six hundred and twenty-four (624). The number is still expected to increase as the college anticipates the enrollment of thirty-five (35) students in the Yap state cohort program. Seventeen students are expected to enroll in the

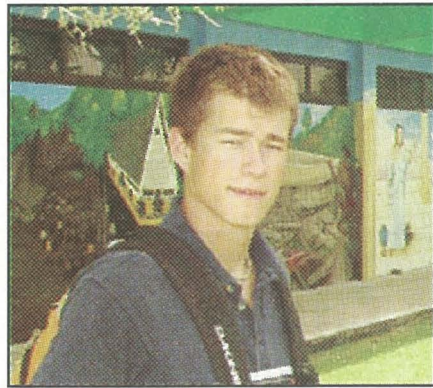
The college has managed to secure two generators to provide temporary relief for dorm residents who depend heavily on evening study-hall time to help with their studies. The recent arrival of new dorm residents from off island for fall semester has the dorm occupancy now at near-full capacity with close to ninety students now billeted in the campus housing.

Another generator which has been hooked up to the classrooms has just enough juice to provide lighting- one bulb per classroom- for evening classes.

Local power supplier- PPUC- says the rolling blackouts will continue at least into the early portion of next month.

Nursing program while eighteen are due for the education program for headstart teachers. The enrollment of the Yap cohort students should put this fall semester's enrollment over that of last year's. Last school year's fall enrollment was at six hundred fifty-one (651).

## Small Town Montana Student Chooses PCC



Unrelenting recruitment effort by the college admission's office has drawn Samuel H. Ore from Three Forks Montana, USA to Palau Community College.

Proof that PCC's appeal is not specific only to students from the surrounding Pacific region but far beyond, is perhaps best showcased this fall semester by the arrival of a freshman from a small rural town in Montana, USA which has a population of just over 1800, a fraction of that of Koror's.

According to the Director of Admissions and Financial Aid Dahlia Katosang, Samuel H. Ore, a 2006 graduate of Three Forks High School in rural Three Forks, Montana will go on

record as the first-ever US high school student to apply for admission to Palau Community College since the college transitioned from its trust-territory years as Micronesian Occupational College to Palau Community College in 1993.

Ore first found out about Palau when he was selected from his high school to take part in a Close-Up program in Washington D.C. during his junior year in high school. Ore said he met some Palauan students who were also in the Close-Up program and also met the Palau Ambassador to the United States, Hershey Kyota. Ore became very interested in Palau from his contacts so much so that he initially planned to come to Palau via a high school exchange program that Ambassador Kyota mentioned during their meeting. Unfortunately, circumstances wouldn't allow it so he decided to finish his senior year at home, all the while continuing to research more about Palau.

After graduating from high school, his short list of possible colleges included Rutgers University in New Jersey, Clemson University in South Carolina and of course Palau Community College.

Not receiving the responses he wanted from both Clemson and Rutgers, Ore decided to enroll at PCC. "Deciding to come to Palau for college was indeed a big move to say the least, and I admit that even my parents had their reservations about me coming out to Palau," he said. I am adjusting just fine though, and have been in touch with my parents to let them know.

Ore is the eldest of three children. His two younger siblings who are twins both are sophomores at Three Forks High School. His father is a plumber by trade and his mother is an English teacher.

Ore who is interested in a career in turf management after college plans to take a year of general studies at PCC before going to a university that offers his field of interest.

Palau Community College is pleased to have been allowed the opportunity to be part of Samuel H. Ore's college career, and looks forward to the challenge of preparing him for his future career choice. Welcome to Palau and PCC!

Visit PCC website: [www.palau.edu](http://www.palau.edu)

## PCC-AHS Students from Ngchesar Tour Main Campus

By PCC Adult High School Program

On Thursday, August 17, 2006, the PCC Adult High School students from Ngchesar state paid a visit to the PCC campus. The field trip was led by the principal of Ngchesar Elementary School who teaches the Occupational Knowledge course and Heroncio Spesungel, who teaches Community Resources to the ten students. The Ngchesar AHS program began last year with two courses.

The students visited the shops, beginning at the OMIP Computer Lab with Assistant Dean Sherman Daniel orientating the students to the various vocational programs the college offers. All the students were so impressed by all the opportunities that they all took brochures of the different programs for themselves and for their children. Most of the students are older adults with families.



PCC Adult High School students from Ngchesar state tour PCC campus with Ngchesar elementary school principal Bill Rechelluul (front-center) and Adult High School program director Laura Mangham (r).

Established in the fall of 2000, the PCC Adult High School offers classes to individuals interested in obtaining their high school equivalency diploma. According to program director Laura Mangham, since its establishment, a total of six hundred and sixty (660) students

have enrolled in the program. A total of one hundred thirty-eight (138) have graduated. Of the total graduates, five (5) have continued on to receive their degrees from PCC, thirty-four (34) are currently enrolled, while others have gone on to pursue college off-island, joined the US armed forces, or now have gainful employment.

In addition to the program's main campus at Palau Community College in Koror, satellite campuses have also been established in the states of Ngardmau, Melekeok, Ngchesar and even on the remote island state of Sonsorol. The program has set a visit schedule for this fall/winter to assess other states and their needs for such service.

For more information about the PCC Adult High School program, contact Laura Mangham at 488-0826.

## BITS AND PIECES...



### KILL Everything...

With the ongoing rolling blackouts, all offices are reminded to turn off COMPUTERS, BATTERIES, and SURGE PROTECTORS to protect against equipment failure from EXTREME POWER SURGE generated when the power comes back on line. Your utmost cooperation in this matter is required. Thank you for your continued care in the use of all scarce college properties.

### TARO Symposium Wraps Up Today...

The two-day symposium on Taro- an important food staple in Palau- concludes today. The meeting, held at the Ngarachamayong Cultural Center is attended by a number of local organizations that deal with taro farming and propagation. PCC-CRE agriculture specialists taking part in the gathering are sharing their expertise in taro propagation especially through tissue culturing methods. Others share innovative ways the local root crop-taro can be used to make popular food items such as taro ice cream and cookies. The symposium ends at 5:00 pm today. For more information about the taro tissue culture and the taro food items at PCC-CRE, please contact Vice President Thomas Taro at 488-2746.

### JAPANESE Movie at the Cafeteria ...

In its ongoing effort to promote cultural understanding and foster friendly relations between Japan and Palau, the Embassy of Japan in Palau, the Japan Foundation, Japan International Cooperation Agency (JICA)- Palau, and Palau Community College are jointly sponsoring a Japanese movie "Water Boys" screening at the PCC cafeteria starting tonight at 6:00 pm. Admission is free and the general public is invited. For more information about the movie, please contact PCC Japanese language instructor Yuko Sawada at 488-2471, ext. 272.

## Upward Bound Math & Science

The Upward Bound Math and Science (UBMS) Center at Palau Community College announces its recruitment efforts for the new SY 2006-2007. UBMS is similar to the Classic Upward Bound Program. However, UBMS is designed to strengthen the participant's skills in mathematics and science fields. Any high school student who is interested in UBMS services can apply. Applications are available at UBMS office at 488-3965 and via PCC website: <http://www.palau.edu/ubmath.htm>. UBMS' academic services will begin on September 30, 2006 with a student orientation.

### Services provided upon acceptance to UBMS:

- ACADEMIC YEAR ACTIVITIES
- \* Tutoring Services
- \* Academic Advisement/PLAN for students
- \* Student Workshops and Seminars
- \* Postsecondary Exposure/Admission Assistance
- \* Campus Visitations/Career Advisement
- \* TOEFL and ACT/SAT Review

### SIX WEEK SUMMER COMPONENT

- \* Structured Academic Courses
- \* Tutoring Services
- \* Educational/Cultural Enrichment Activities
- \* Recreational Activities
- \* End of Summer Banquet

UBMS is a member of the TRIO program funded by a grant from the US Department of Education.

## Continuing Education Training

PCC Continuing Education (CE) program will be conducting a computer training for the staff at the Ministry of Health (MOH). The training will begin on September 26.

Also working in conjunction with the Behavioral Health division of the MOH, the CE program will also be offering the fourth round of the Crisis & Clinical Counseling class. Registration is now open for interested individuals.

For information or registration about CE training programs, please contact Taruu Nakamura at 488-6223.

## Looming Deadline

In preparation for Year-End Closing of Books for FY 2006, the Administration Department has designated **Thursday, August 31, 2006** as the deadline for submission of all **off-island requisitions** and **Friday, September 15, 2006** for all **local requisitions** for this fiscal year. Therefore, all departments and offices are requested to prepare and submit their requisitions following the above-mentioned dates. Any requisition submitted after the deadlines will be addressed in the next fiscal year.

For further information, contact ext. 227.

## Senator Otto Gives Again to College



Senator Caleb Otto (r) hands over his donations of computers to Bruce Rimirch, Director of Computer & Data Processing at the boardroom.

Senator Caleb Otto, a stalwart supporter of the college especially via his family's annual support to the PCC Endowment Fund, has again, recently extended his hand to the college and this time he gave two computer systems.

Senator Otto said that he was pleased to give the computers to the college as he knows that they will be put to good use in the college's perpetual effort to improve student learning.

During the annual budget hearing earlier this month at the OEK, Senator Otto praised the college and its leadership for continuing to expand and improve services to the students and community.

PCC deeply acknowledges Senator Otto and his family's computer donations and also for their annual support to the college's fundraising effort.