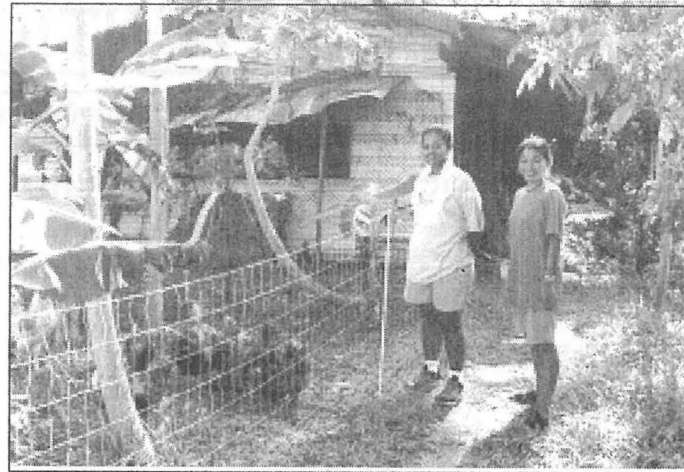


PCC AGS Program Featured in Japanese Magazine

The PCC Agricultural Science Program was featured in the August 2000 issue of "Crossroads" magazine of the Japan Overseas Cooperation Volunteers (JOCV). "Crossroads" magazine reports JOCV activities in many countries worldwide. The article in the August 2000 issue was written by Reiko Kawamura, Instructor of Animal Husbandry in the PCC Agricultural Science Program. Reiko is a Japanese volunteer who has been teaching in our program since April 1999.

In her article, Reiko described the PCC Agricultural Science Program and her experiences in Palau. She included several photographs of the students and facilities in the program. Thank you Reiko and JOCV for publicizing the Agricultural Science Program.



Reiko Kawamura (r), a Japanese volunteer-instructor in the PCC Agricultural Science Program observing the "free-ranging" chicken at the AGS farm with student, Pua Michael.

Graduate Record Examination (GRE) Test

The GRE test for school year 2000-2001 will be administered on October 14, 2000 at Palau Community College. The registration fee is \$125.00

Interested individuals may contact Marensia Edward, Palau GRE Center Supervisor at 488-3036.

TOEFL Information for School Year 2000-01

Test Dates	Registration deadline	Scores mailed
Oct. 21, 2000	Sept. 4, 2000	Nov. 29, 2000
Jan. 20, 2001	Dec. 4, 2000	Feb. 28, 2001
May 12, 2001	Mar. 26, 2001	June 20, 2001

* Registration fee is \$110 and you may contact the PCC Counseling Office at 488-3036 for more information.

Celebrating Birthdays



Josepha Tutii	August 28
Mitsko Walter	August 28
Anne Mobil	September 6

Happy Birthday to you two!!!

Mesekiu's News
Palau Community College
P.O. Box 9
Koror, Palau 96940



Palau Community College MESEKIU'S NEWS

FREE COPY



Friday, September 1, 2000

Weekly Newsletter

Volume 2, Issue 34

PCC Library's Micronesia-Pacific Collection: A Treasure Worth Discovering

The Palau Community College Library is proud of its very special collection, the Micronesia-Pacific Collection. We call it "Micro-P" for short. This non-circulating collection consists of information in many formats concerning Micronesia and the islands of the Pacific. We have books, periodicals, dissertations, government documents, newspapers, maps, posters, phone books, videos, CD-ROMs, ephemera, and extensive vertical files. We even have three dimensional objects, such as plastic model of a sea turtle! Imengel Mad, Library Technician, is responsible for the day-to-day management of the Micro-P, which now numbers over 7,000 books and 107 videos. The technical processing of new acquisitions for this collection is labor-intensive, and Imengel is assisted in this work by P. Kempis Mad, a part-time Library Assistant.



Library Technician Ms. Imengel Mad Shows off the PCC Library's Micronesia-Pacific Collection

There are over 390 titles in the Micro-P periodicals, which includes regional newsletters as well as scholarly journals and general interest magazines. The Micro-P Collection subscribes to Tia Belau, Palau Horizon, Roureur Belau, and the Pacific Daily News. PCC's Office of the President donates the Marianas Variety on a regular basis. Imengel will also gladly assist you in finding especially useful Micro-P web sites on the internet!

The PCC Library is the Republic of Palau's designated depository for all materials published by the Secretariat of the Pacific Community (SPC). In addition, the PCC Library is Palau's depository for United Nations (UN), United Nations Educational, Scientific, and Cultural Organization (UNESCO), and Food and Agriculture Organization of the United Nations (FAO) materials. Many of these agencies produce materials that focus on the Pacific Islands, and are then housed in the Micro-P. The Micro-P also acquires all South Pacific Regional Environment Programme (SPREP) publications.

Recently, the PCC Library acquired a microfiche/microfilm reader/printer, which is a large piece of specialized equipment. This machine will enable us to read microfiche or microfilm formatted material, and make regular paper copies from selected pages. At this time, the Micro-P has not yet acquired any microfiche/film resources, but we plan to do so. In the meantime, we are working with the Belau National Museum to make paper copies of selected material from their extensive collection of microfiche documents. The Micronesia-Pacific Collection is housed in one room of the library, and features artwork by local artists. A variety of Micronesian artifacts are also on display in the Micro-P.

"We invite everyone, especially our new students, to stop by and visit the Micro-P. It contains a wealth of information, and is a valuable resource for PCC and for the entire Republic of Palau", says Imengel. For additional information about the Micro-Pacific Collection or the PCC Library's programs and services, please contact Jane Barnwell or Imengel Mad at telephone number 488-2471/3540.

Inside

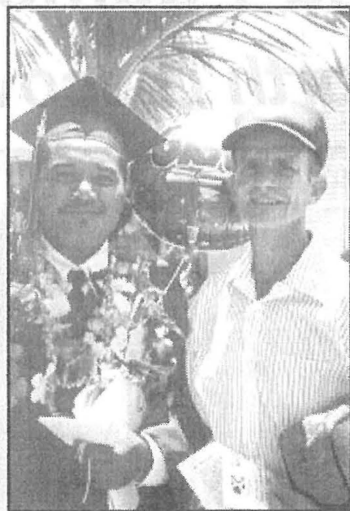
- PCC Library Users Skyrocket, Statistics on page 2
- JAWS Spotted in PCC Library, page 2

PCC Library Posts Number of Users from 1998 - 2000 Year To Date

YEAR	Jan.	Feb.	Mar.	Apr.	May	June	July	Aug.	Sept.	Oct.	Nov.	Dec.	Total
1998	4,585	4,602	5,929	7,583	5,351	5,684	4,712	4,585	11,086	13,942	9,679	8,338	86,076
1999	9,180	11,070	14,555	13,960	8,748	7,363	9,318	11,160	15,225	16,596	16,812	7,361	141,348
2000	19,300	17,954	14,691	11,597	12,820	20,844	10,309						

Assoc. Professor helps Republic to Battle Invasive Weeds

While most teachers in the nation spent this summer relaxing and vacationing, PCC's Associate Professor of Agriculture Dr. Joel E. Miles was busy working. Dr. Miles personally donated his services this summer to the Palau government's Division of Agricultural and Mineral Resources (DAMR) in the nation's battle against a particularly invasive weed called *Imperata Cylindrica*, also known as cogon grass or kunai grass. This type of weed was first detected near the Airai International Airport runway two to three years ago by Dr. Margie Falanruw.



Dr. Miles' contribution amounted to some \$3,000 worth of services which was matched by federal matching funds. Now that Dr. Miles is back on campus, the DAMR finds the need for Dr. Miles' continued services. Hence, the College is currently making arrangements so that whenever possible, Dr. Miles can continue this service on behalf of PCC to help Palau eradicate this weed.

Another invasive weed has also been detected and is called *Mikania Micrantha*, better known as "mile-a-minute" because of its quite rapid growth. A survey of this weed's infestation was done this summer with the help of one of our students, Pualani Michael, who did her intern at the DAMR. We are optimistic that through the combined efforts of the DAMR, PCC, relevant agencies and individuals, Palau will successfully eradicate these and other types of invasive weeds that threaten the nation's agricultural industry.

For information on PCC's role in this effort to eradicate invasive weeds or about the PCC Agricultural Science program, please contact Dr. Joel E. Miles at PCC telephone number 488-2471, extension 245.

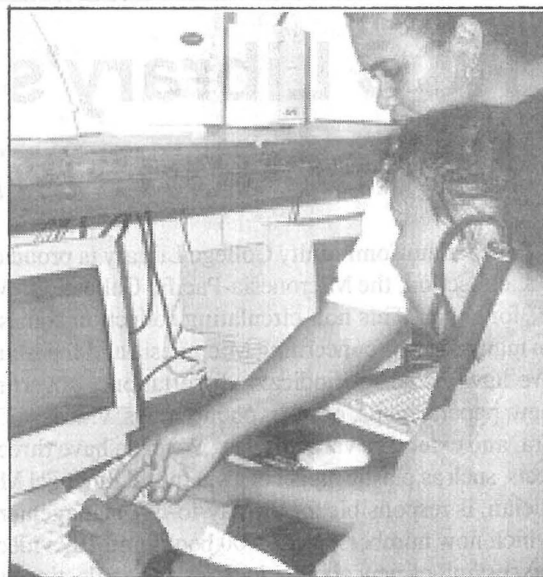
JAWS Spotted in the PCC Library!

The PCC Library has recently acquired three unique software packages designed to assist visually impaired computer users: JAWS for Windows, Magic 6.2 screen magnification software, and Write Outloud, the talking word processor.

The software was donated to the PCC Library during the recent PEC by a longtime friend and supporter of Palau's special education program, Dr. Shirley Coale. Dr. Coale is with the University of Oregon's Western Regional Resource Center. We are grateful to Shirley for her donation.

According to PCC Student Dora Uchel, this software is revolutionizing her use of the library, and greatly enhancing her ability to access information. These pieces of software will help anyone who has difficulty reading small screen print. In addition, the voice activated software enables users to hear what is typed on the keyboard. For example, Dora can word process an essay for her English class, and the computer will read back to her what she has written. Dora laughed and pointed out, "This software is really helping me, but the computer generated voice has not had lessons in Palauan pronunciation yet!!!"

The software is installed on the public access computer currently located in the new extension area of the library. Please ask library staff for assistance if you would like to use this software. If you know someone who can benefit from this software, please tell them about it! The PCC Library is very proud to be able to improve access to computerized resources for library users with impaired vision. Thank you, Shirley!



NOTICE: Access to UH Library to be Limited Next Summer

Last month, the College received word from Karen Peacock, Pacific Curator for the University of Hawaii (UH) Library that the possibility of access to the UH Library will be very limited next summer. This is because "from May through August of 2001, the UH Library will be undergoing renovation and asbestos removal", said Peacock in an e-mail message to PCC's Librarian, Jane Barnwell. While UH will establish temporary facilities to be available in the library's new wing, regular services and access will be limited. At this time, accessibility details on the Pacific resources have as yet to be determined; hence, Ms. Peacock has asked everyone, especially researchers, to contact the Library in advance before finalizing travel plans to UH next summer. Ms. Peacock's email is peacock@hawaii.edu and her telephone number (808) 956-2851. She may also be faxed at (808) 956-5968 as well. When details become available, Ms. Peacock will inform the College via Jane at the PCC Library.

RETENTION WEB PAGE

PCC Retention Office, Tel.#: 488-2471, ext. 247

Hard Work Gets Successful Results

Congratulations to these two young ladies who have successfully completed all 30 points of Reading Lab as of August 30, 2000.

Shirley James Sandy Kinto

Labor Day Holiday

Monday, September 4, 2000 is Labor Day and a national holiday in Palau observed by all public offices and schools, including Palau Community College. In observing this Labor Day holiday, PCC offices will be closed and there will be no classes. Only essential services will be provided. HAVE A NICE THREE-DAY WEEK-END!!!

Continuing Students: Their Perspective

The following are suggestions from continuing students that should ensure a happy and successful first year at PCC for the new students:

"No one said getting an education is easy, but you need to work hard now to enjoy the benefits later." (Jack)

"Further knowledge means higher success." (Athena)

"Manage your time wisely; put what you learn into good use and set your goals." (Franston & Sonnie)

"Get to know all the different people here at PCC. Try to use and manage your time wisely so that you don't feel like you're always behind in work or class; do not ever be afraid to ask for help whenever you need it." (Lynna)

"Be wise and remember that education is your key to success. Study hard and don't miss out. Good luck!" (Ines)

New Reading Lab Requirements

When do you go to the Reading Lab? The free time before, between, and after your classes.

Be sure to:

Sign in first. Write your name clearly so we know who to assign points to. Remember to Time-In and Time-Out!

Find a book you want to read at Project Beacon. There will be points already assigned to the book selections. If you are not sure, ask Marianne about the points system.

You can even bring your own book-selection from "outside" and Marianne will evaluate it according to the established points system for the Reading Lab. After you are done reading, write a brief summary of the book you read (what is it about?) or do multiple-choice questions.

You must have 30 points by the end of the semester.
 10 points for September
 10 points for October
 10 points for November

A reading test must be taken again at the end of the semester before Reading Lab points are given.

ATTENTION ALL STUDENTS!!!

The election of the Student Trustee, Senate Officers, and Class Representatives for school year 2000-01 will take place on Thursday, September 21, 2000. Qualification for senate members and student trustee are as follows:

- Student must be full-time (12 credits of more) degree or certificate candidate; minimum G.P.A. of 2.00.
- Student must have no record of felony or criminal offense.

Specific requirements for each position:

- Student Trustee** - Freshmen or sophomore with at least one-full time term prior to election.
- President** - Sophomore student with a minimum of 30 credits toward current major.
- President-Elect** - Freshmen student with a minimum of 18 credits toward current major.
- Secretary** - Freshmen or sophomore.
- Treasurer** - Freshmen or sophomore.
- Class representatives** - total of four students, two from freshmen and two from sophomore class to be elected by students of each respective freshmen and sophomore class.

Academic Calendar, Fall 2000

September 4	Holiday: Labor Day
October 2	Holiday: Independence Day
October 3	Last day to remove Incompletes
October 9-13	Mid-term period
October 20	Last day for all withdrawals
October 24	Holiday: United Nations Day
November 23	Holiday: Thanksgiving Day
November 23-24	Students Thanksgiving Day
December 8	Last day of instruction
December 11-13	Final examination period
December 15	Grades due