

Alumni Notes

Class of 1998 & 2003 (PCC)

Kenny Mers -



2003 PCC graduate with an Associate of Science (AS) in Criminal Justice; and 1998 graduate with an Associate of Science in Secretarial Science (SEC). Mers is an investigator for the

Foreign Investment Board.

Class of 1997 (PCC)

Atu Taumoepeau -



1997 PCC graduate with a Certificate of Achievement (CA) in Secretarial Science (SEC). Taumoepeau works as an enforcement officer for the Ministry of Justice-Division of Fish &

Wildlife Protection.

Class of 2006 (PCC)

Jenkins Mariur -



2006 PCC graduate with an Associate of Science degree in Criminal Justice. Mariur began his career as boat operator with the Koror State Government, then OER Security Guard, before joining the Immigration Office. He has been with the

immigration office for 18 years.

Alumni Notes showcases MOC&PCC alumni who contribute to the quality of life in their local community and are positive role models for other PCC students to emulate. If you are that alumni or know someone who is, please contact the PCC Development Office at telephone number 488-2471. We would like to feature you and all alumni in future issues of the *Mesekiu's News*.

Celebrating Birthdays

Josepha Tutii	Aug 28
Teongel Ngirkelau	Aug 28
Dahlia Katosang	Sept 3
Joshua Ngirngbedangel	Sept 3

Happy Birthday To You!

MESEKIU'S NEWS
Palau Community College
P.O. Box 9, Koror, Palau 96940
www.palau.edu

Volleyball Mini Tournament this Friday (8-28)



The PCC recreation staff is hosting a volleyball tournament Friday evening following the

conclusion of the volleyball clinic where students learned proper rules and coaching techniques. Anyone is welcome to join the tournament, just be at the dorm court by 7 pm. Participants should try to get a team together beforehand, but we can try to fit in individuals also.

Deadline for Softball Signup is Sunday (9-6)

This fall PCC students and staff will have the chance to play in our co-ed softball tournament. The team sign-up deadline is next Sunday and the tournament will begin on September 8. Games will be played at the Meyuns field. Teams should designate a team captain to appear at the technical meeting which will be on Monday Sept. 7th. Anyone is welcome to join although teams will need a minimum of 3 girls and 10 players total. Sign up at the recreation office by the dorm. For questions contact one of the recreation staff members at 488-3885.

Old Students put a Whooping on Incoming Freshmen

Old students dominated in the first Freshmen vs. Sophomore basketball game which was held on Saturday August 22nd at the PCC basketball court. The final score was 76 to 53 with the old students keeping ahead throughout the game, and the Freshmen putting up a valiant effort but not quite able to get ahead. Top scorer for the Sophomore team was Cris Carlos with 13 points and Eskiel T. lead the Freshman team with 10 points. The old students will have to defend their title again next weekend during the rematch which will start at 7pm on Saturday August 29th.



Recreation Office Contact

Office at PCC Dorms
hours: 12 - 9pm
phone: 488-3885
Norman, Hamilton, Weldon

Advertise Mesekiu News

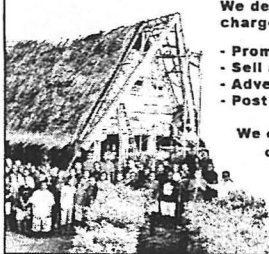
Support the community and distribute your message to 1000's of individuals.

Each week we reach
- 50+ local businesses
- 1000's of individuals
- in 8 countries

We design your ad free of charge.

- Promote your business.
- Sell a car.
- Advertise an event.
- Post community messages.

We can do it!
call 488-2470 ext. 253



Palau Beach Bungalows
peace & relaxation Palauan style

Only \$40+ tax per day
Private a/c, bedroom & bath, living room, kitchenette
Beachside on Rabeldaob Island, Melekeok
State 30 minutes Airport
- RESERVATIONS 680.587.2533 -
- palaubeachbungalows@palau.net

PCC BOOK STORE

Lowest Prices in Palau
\$2+ Bento Box
70¢ Candy bars
50¢ Softdrinks

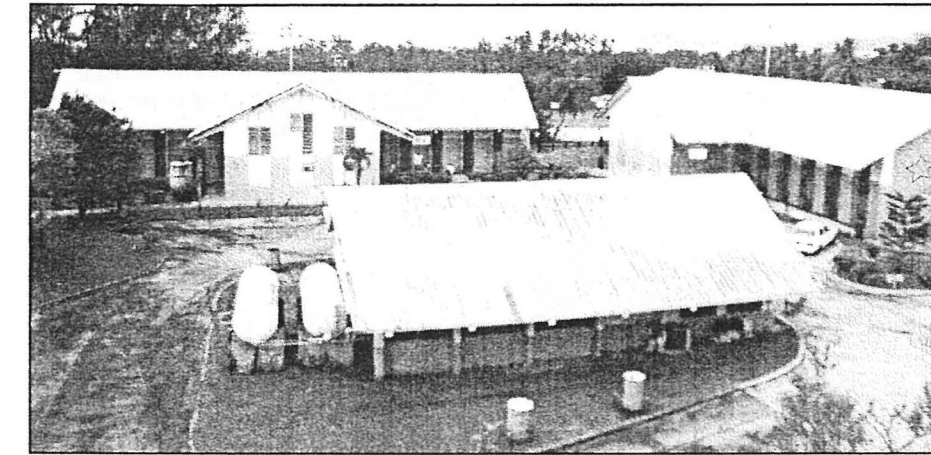
"Eco-friendly" lunch boxes are made fresh daily at rock bottom prices. Also available: cup of noodles, canned meats, crackers, chips, and more. Music CDs by Palauan artists also available.
Call us at 488-2471, ext. 236, or drop in for a visit.

Palau Community College

MESEKIU NEWS

Friday, August 28, 2009 Weekly Newsletter Volume 11, Issue 35

PCC Dorms are Fit to Bursting



The dorms on PCC campus which can house a maximum of 116 students are being pushed to capacity this fall semester. About a week before the fall semester began a big group of students moved into the three housing complexes, turning the once tranquil utopia into a ruckus of rap music and bioenergetic volleyball games. Thankfully

the same students also know when to quiet down as the start of class this week saw them begin to focus attention towards their studies.

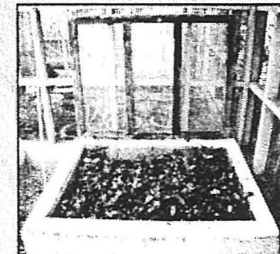
There are 46 new students, 21 returning students and 24 students who stayed on campus through the summer. Add to

See Dorms on Page 2

PCC R&D Station Updates (tissue culture)

Students with majors outside of the science and agriculture fields may not yet be familiar with the College's research and development station. The facility is located in Ngaremlengui state and covers 25 acres. For the next few weeks we will update you on some of their projects.

the amount of time. This technique first involves acquiring the buds from existing stalks. Research is currently being done to see if placing the plant clippings in humidity boxes will cause them to sprout faster. After the



A humidity box to help plant clippings sprout faster

One of the main tasks of the R&D station is to do research into Palauan crops and how best to cultivate local sources of food. The station has been working on a technique to quickly turn plant clippings into material that farmers can transfer to fields to shorten

the clippings are obtained they are taken into the tissue culture building

See R&D on Page 2

Electrical Technology Students Tour Library



Electrical Technology students pose in front of the new library with instructor Frutoso Tellei and Neco Construction Manager Shao Yang-Chan.

The new library is more than just a pretty building, it's also a place where students can get a firsthand look at how their trade is applied in the real world. The ET 211 Industrial/Commercial Wiring class took a tour of the new library, giving them a chance to see classroom principles applied in an on the job setting. If other instructors are interested in similar class tour of the library before its completion, please contact PCC Architect/Engineer Chester Lelis at ext. 242.



PCC Architect Chester Lelis and Neco Construction Manager Shao Yang-Chan explain commercial wiring to electrical students.

R&D from Page 1

where they are placed in sterile jars filled with a nutrient rich jelly. This jelly is plant specific with a different mixture of nutrients being used for each plant variety. This method of growth is called tissue culture and is a great way to produce clones of existing plants or in this case a method for producing mature plants more quickly than traditional methods. Tissue culture must be performed under sterile conditions, if bacteria or fungus gets into the sterile jar it will thrive on the nutrients intended for the plant and kill it. Once the cultivated sprout reaches a healthy size it will be moved to a field until it matures.

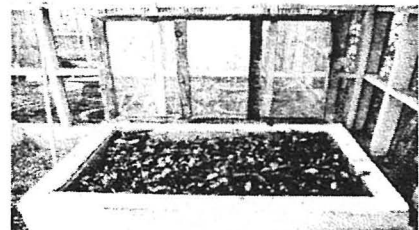


Dr. Aurora G. Del Rosario Ph. D examines a taro plant in a tissue culture jar.

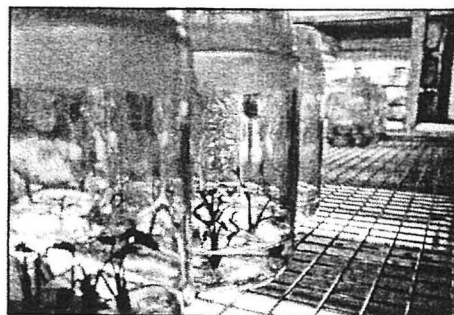
The PCC R&D facility is funded by the USDA and because of this their research and products are for public use. Farmers or individuals may receive cultivated plant tissue or clippings free of charge by contacting the R&D station at 733-1111. Free materials are limited and may not always be available.



Cultivated Red Ginger which will be used as part of the compact road beautification project.



Much of Palau's soil has a low PH content and is lacking certain nutrients so the R&D station produces its own soil which is a blend of sieved dirt, compost and sand.



Taro plants in sterile cultivation jars are being prepared for transplantation to outdoor grow rooms.



Leory watering the taro plants after they have been removed from the culture bottles.

Dorms from Page 1

that number the Yapese Navigators and 5 PHS students (special arrangement) for a grand total of ninety-six students, with the possibility of more to come.

Dorm residents are from all over the Pacific Islands, this year the majority are from Yap with 30 students, there are about 16 Marshallese, 12 Chuukese, 12 Kosraeans, 10 Pohnpeians and a scattering of Palauans who are staying at PCC during the school year. The Yapese navigators are part of the traditional navigation course taught by master navigator Sesario, and they are currently living in dorm B.



Dorm students chillaxin' between classes in the highly popular TV room.

The dorms offer a great way for students to intermingle with people from other places, to partake in extracurricular

Faces of PCC



One goal of the Mesekiu News is to help unite PCC as a family. To help everyone get acquainted we will feature photos and

brief bios of PCC staff and students in the "Faces of PCC" section. If you want to appear in the newsletter or want to nominate someone just stop by the development office or call Elliott at 488-2470, ext 252.

Elliott Benzle



Elliott is from Columbus, Ohio USA. He moved to Palau after living in Taiwan for 3 years where he taught English and wrote books for Kojen Language Schools.

He designs web sites and was recently hired in the PCC Development Office to help with the Mesekiu News and assist in updating the PCC website. He also teaches the English 70 class for English beginners.

Jingren Shi (Grace)



Jingren is one of our international students. She is from Nanjing City in China. She has a degree in Music Education and is at PCC to study English before pursuing other opportunities in the USA.

Flavin Andres



Flavin is a Palauan from Melekeok State. He is currently working on an undergraduate degree in Information Technology. He is interested in chess, music and art. On August 30th he will

be competing in a chess tournament at the Knights and Rooks Chess Club in Koror.

More Respond to Endowment Fund Call

Thank you for your support and generosity

- | | |
|----------------------|----------------------|
| Elenita Brel | Husayn Beketaut |
| Juan Camacho | Ruskey Remoket |
| Frutoso Tellei | Rogelio G. Santos |
| Sheree Sengebaw | Nobi Enano |
| Debra Neas | Nena H. George |
| Sebastian Ngiratrang | Felix Sengebaw |
| Lester Rekemesik | Becheseldil Nakamura |
| Peter Tadao | Jackline Immanuel |
| Gibson Towai | |

BITS AND PIECES...

Paddles Needed

The Paddlers Club needs Paddles...

The Paddlers Club is off to a great start with 30+ registered paddlers. We are currently looking for people to donate paddles, old, new and even broken paddles that could be repaired. To donate paddles please contact Elizabeth at Faculty Office 2, 488-2471 or Elliott at the Development Office, 488-2470, ext 252. Those wishing to join the club may still sign up. To participate please contact Elizabeth at Faculty Office 2, 488-2471, or Weldon at the recreation office, 488-3885.

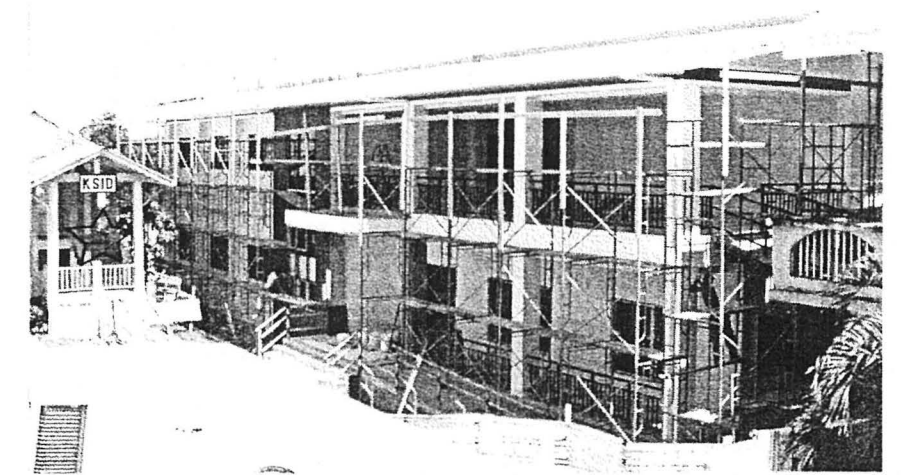
Vacancy Announcement

25 Part Time Tutors Needed...

Talent Search program needs to hire 25 part time tutors. Pay is \$400.00 to \$1,200.00 annually, depending on qualifications. Applicants should have a minimum of an AA/AS degree and a bachelors degree is preferred. College Sophomores majoring in Education or Liberal Arts may also apply. Tutors will be responsible for evaluating students progress, providing tutoring/ counseling assistance, participating in student activities and field trips, submitting recommendation reports and performing other related duties. Applicants need to be willing to work with children.

To apply obtain an application from Human Resources or visit www.palau.edu. Send completed applications, along with resume, transcripts and previous employment history to:
P.O. Box 9047
Koror, Palau 96940
For further information please call (680)488-3926, 488-0826 or stop in and see us at the talent search office on the PCC campus.

247 Days Into 270 Days of Construction of the New PCC Library



The final coat of paint is being laid on the exterior walls and those walking by can see the PCC color scheme represented there. The book drops are being put together and final touches are being put on the front desk. The newly constructed building will house the library collections on the first two floors while the top floor will be used for faculty offices and the ASPCC office.

PCC Comic Competition 2009

All PCC students and staff are invited to take part in the 2009 comic competition. Comics may be any size or format and the subject of the comic should be related to PCC or Palau in general. Winners will have their comic printed in the Sept. 4th issue of Mesekiu News and will receive a free lunch from the bookstore.

Now is your time to shine! Submit your comic to Elliott Benzle at the development office, or call at 488-2470 ext. 252. Email at elliottbenzle@gmail.com.



This is YOUR Newsletter!



Mesekiu News is your newsletter. Take pride in your school, if you have announcements, stories to report, class presentations, exciting field trips, ideas, comments or suggestions please give us a call or stop by and let us know. We will send a reporter to take pictures and write the story for you. Development Office. 488-2470 ext. 253 ask for Elliott.

Just for Fun

We have hidden ten stars throughout the newsletter. The first person to find all ten can stop by the development office for a prize. Happy Hunting.



Message of Appreciation

I would like to express my deepest appreciation to all my friends, colleagues and staff at Palau Community College for your support, prayers and friendship during the recent passing of my dear mother. Your kind gestures, charitable contributions, warm thoughts, and gentle encouragement helped me deal with the untimely loss of my mother who was very dear to me. During this sad and challenging time in my life, my sorrow was gently lifted by your support. It is a memory I will always treasure and keep in my heart. Thank you all and God bless.

Sincerely, Pauline Jerry