

Alumni Notes
Class of 2003 (PCC)

Edwin Yairegsiug -



2003 PCC graduate with an Associate of Science (AS) degree in Office Administration (OA). Yairegsiug is from Yap and is currently attending the College of Micronesia-FSM pursuing his

Bachelor's degree.

Class of 1994 (PCC)

Stacy Yamanguchi -



1994 PCC graduate with an Associate of Arts (AA) degree in Liberal Arts (LA). Yamanguchi works at S&S Video Plus as the Store Manager. She has been working there for the past 12 years.

Class of 1991 (MOC)

Richard Ngiraked -



1991 MOC graduate with a Certificate of Achievement (CA) in Automotive Mechanics Technology (A.M.T). Ngiraked works at the Division of Revenue & Taxation as a Tax

Officer and has been working there for the past year.

Alumni Notes showcases MOC&PCC alumni who contribute to the quality of life in their local community and are positive role models for other PCC students to emulate. If you are that alumni or know someone who is, please contact the PCC Development Office at telephone number 488-2471. We would like to feature you in future issues of the *Mesekiu's News*.

Mesekiu's News
Palau Community College
P.O. Box 9, Koror, Palau 96940

Celebrating Birthdays

Dahlia Katosang September 03
Anne Mobil September 06

Happy Birthday To You!

ATTENTION: ALL STUDENTS & STAFF

The election of SBA officers and student trustee for school year 2007-2008 will take place on September 07, 2007. Qualification for officers and student trustee (Student Representative to the Board of Trustees) are as follows:

1. Student must be full-time (12 Credits or more) and maintain a cumulative grade point average (GPA) of 2.00 or above.
2. Student must have no record of felony or criminal offense.
3. Class representatives shall be composed of four (4) students, two from the freshman class and two from the sophomore class.
4. Officers shall be from the following classes:
 - A. Student Trustee- Either a sophomore or freshman with at least one full time term prior to election.
 - B. *President Elect- Freshman student.
 - C. Secretary- Either a Freshman or Sophomore.
 - D. Treasurer- Either a Freshman or Sophomore.

*President-Elect will serve in the capacity of a vice president for one year and will automatically become president the second year.

ELECTIONPROCEDURE:

1. Candidates for the Board of Trustees, Senate Officers and Class Representatives shall register at the office of the Director of Student Life no later than September 05, 2007 at 4:30 p.m.
2. Candidates must acquire a petition form with the signature of twenty-five (25) student body association members which must be submitted to the office of the Director of Student Life on or before September 05, 2007 at 4:30 p.m.
3. Election of Student Trustee, SBA officers, and class representatives will take place on September 07, 2007 and to be held at PCC Mesekiu Bai from 8:00 a.m. to 5:00 p.m.

Basketball and Volleyball Tournaments Next Month

There will be an intramural co-ed basketball and volleyball tournaments scheduled to begin on September 10, 2007. Basketball will be played on every Mon., Wed., & Fri. while volleyball shall be played every T & Th. Games will begin at 7:00 p.m. and shall be played at the PCC owned outdoor basketball and volleyball courts. A basketball team may consist of at least 4 males and one female while volleyball teams may have at least 3 males and 3 females.

Any student who is interested to participate in this tournament may register his/her team at Recreation office. Office hours is daily from 12:00 noon to 9:00 p.m. You may also call 488-3885 to inquire for more information. Team must have a team captain and team name. Deadline to submit your team will be on September 05, 2007 @ 4:30 p.m. Games schedule and ground rules will be posted on the campus bulletins on September 06th. Top three winning teams from each perspective tournament will receive cash prizes.

Our Condolences

The College family expresses its deepest condolences to staff member Joshua Ngirangedangel on the loss of his brother. Our thoughts and prayers are with you and your family during your most difficult time of sorrow and grief.



Visit PCC website: www.palau.edu and learn all about Palau's only institution of higher education. While there, check out the PCC weekly newsletter, *Mesekiu's News*, including back issues!



Palau Community College

FREE COPY

MESEKIU'S NEWS

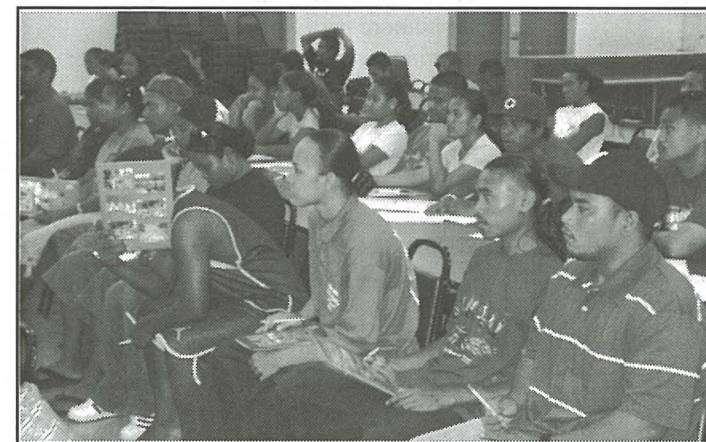


Friday, August 31, 2007

Weekly Newsletter

Volume 9, Issue 35

2007 Fall Enrollment Exceeds 600



New students attending their freshmen orientation at the Cafeteria before the start of the fall semester.

As of yesterday afternoon, the number of students attending the Palau Community College has exceeded over 600 students, similar to that of last year's fall enrollment. The final tally of students enrolled at PCC will be given out in next week's issue of the *Mesekiu's News*.

AAS degree programs in a comfortable and friendly atmosphere. Most of all, PCC provides you with a quality education at a very affordable price. The College also offers an online Bachelor's and Master's degree program through San Diego State University

The influx of students to the College is due to the fact that a large number of people in Palau and in the Micronesian region are choosing PCC for their educational and training needs. And why not? PCC offers a wide variety of AA, AS, and

(SDSU). In addition, PCC's Continuing Education (CE) office offers short-term training seminars and classes in various career and technical fields to bring you up to date on the latest trends, whether it be computer training, learning a foreign language, or just learning performing arts, CE Office has the class for you.

For more information on the many wonderful programs PCC offers, please call 488-2470/2471 or visit our website at www.palau.edu.



Students utilizing their break time to do their homework.

Third Tourism & Hospitality Student Selected for Japan Foundation Program



Tayeko K. Emesiochel, a Tourism & Hospitality-Hotel Operations student who also works at the College Front office as an office clerk, is pictured above with Charge d' Affaires Kunio Nakamura of Embassy of Japan receiving her airline ticket as well as other necessary documents for her trip.

From a pool of applicants for the popular and highly competitive Japan Foundation Scholarship, Tayeko Kerungil Emesiochel was nominated and subsequently accepted to represent Palau to participate in the *Japanese-Language Program for Overseas Outstanding Students 2007*. To further enrich and encourage overseas students in their study of the Japanese Language, this program gives students who excel in Japanese Language classes the opportunity to visit Japan to deepen their knowledge and understanding of the Japanese Language, society, and culture.

The length of the program is 15 days from September 05 to 19, 2007. All expenses will be covered by the Japan Foundation. This includes training fees, airfare, accommodation, transportation,

(Continued on page 3)

Monday Holiday, No Classes!

In observance of Labor Day Holiday on Monday, September 03, 2007, there will be no classes and all PCC offices will be closed. Only essential services will be provided during that day. Have a Safe and Happy Holiday!

SSS-Project Beacon Welcomes Students for Fall Semester



college retention and graduation rates of participants, and facilitating the process of transition from PCC to a four-year university. Program counselors and instructors provide assistance and activities that are geared at engaging and motivating students toward successful completion of college.

SSS services include:

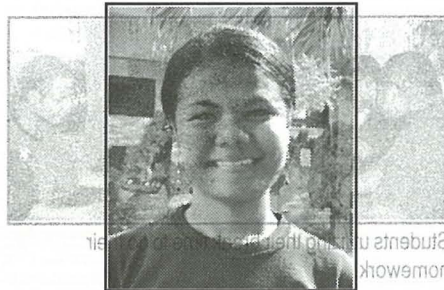
- Tutoring; Assisted Labs;
- Study Skills & Information Workshops;
- Cultural Exposures; Personal Counseling;
- Academic Counseling; Financial Aid Counseling;
- Career Counseling; Transfer Counseling;
- Reading/Writing Lab; SSS Grant Aid.

To provide student-related services more effectively, the SSS program has recruited new and continuing peer tutors and counselors to help other fellow students achieve their academic goals. First row (l-r): Ngedikes Benedict (peer tutor); Heston Kebou (peer counselor); Diliaur Tellei (peer tutor). Back row (l-r): Yasinda Donre (peer tutor); Leena Muller (peer tutor); Shelley Remengesau (tutor); Sheena Henry (peer tutor); and Victoria Nestor (peer counselor).

Responsibilities for program participants include:

Access Project Beacon Lab for help in English, Math, Science, and other courses; Utilize the Reading Writing Lab and computers for class related work; Meet with Program Counselor and/or Career Counselor on a regular basis for the purpose of ensuring academic progress, personal well being, and career exploration. For sophomore participants, regular meetings with the Career Counselor for advice and assistance with transferring to a four-year college or university; Participate in program activities such as cultural trips, job site visits, study marathons, and information workshops among others; Maintain good academic standing. For more information about SSS-Project Beacon, please do not hesitate to call 488-3073.

Successful Students Choose PCC



Evadne Nakamura
Mindszenty High School



Marvin Joey Mathew
Emmaus High School



Roldan Renguul
Belau Modeknei School



Beatrice Uchel Ngraurungil
Palau High School

This fall semester, Palau Community College is happy to see four of the 2007 top students from the four high schools in Palau enroll at the college. They are Evadne Nakamura who graduated from Mindszenty High School; Beatrice Uchel Ngraurungil from Palau High School; Marvin Joey Mathew from Emmaus High School; Roldan Renguul of Belau

Modeknei School. The College was also happy to see top student Alura Dee Ngrengkoi from Bethania High School who attended the summer semester and has left to pursue her education in the United States. The college faculty and staff are proud of your achievements and welcome you to Palau Community College.

One Hundred Students Occupy Campus Dorms

"This is the first time in two years that the number of students residing at the campus dorms reaches a hundred," says Student Life Director, Deikola Olikong. The dorms can house up to a hundred sixteen (116) students.

Currently, there are eighty-two (82) boys and eighteen (18) girls who live in the dorms. All the girls live in one dorm while the rest of the boys are housed at the other dorms.

The dorms also houses a lounge area where students can mingle and watch TV, recreational facility, a laundry room, and pay phones.



Pictured above are two of the three campus dorms. Dorm Managers, Kasilda Bruno and Ephraim Ngrachitei are responsible for the facilities, programs, and services.

BITS AND PIECES... Mangham Donates...

The College family, especially the students, would like to thank Rick Mangham for donating the following baseball items to the school:

- 1 pair Shin/Leg Guard
- 1 each Batter's Helmet
- 1 each Catcher's Chest Protector
- 1 each Catcher's Helmet
- 1 each Catcher's Mask
- 1 each Equipment Bag

Thank you very much for your generosity!

Call for Papers to Student Competition in Philippines...

PCC in association with the Asia Pacific Association for Fiduciary Studies presents the 7th Annual Pacific Region Investment Conference Student Competition, October 18-19 in Manila, Philippines. The winner of the competition will represent PCC in this upcoming competition and will get a \$100 dollar cash prize; a round-trip airfare from Palau to Manila; airport-hotel transportation; lodging at the Mandarin Oriental Hotel; and \$75 per diem for food and other expenses. Applicants must be a full-time PCC student over the age of 18, and must submit a paper with a topic selected from one of the following: 1). Student Experience in Stock Market Investment; 2). Management of Trust Funds; 3). Regional Economic Issues. **Deadline for submission is Monday, September 10, 2007 by 5:00 p.m.,** to the Academic Affairs Office, at Temekai Bldg. For further information about evaluation criteria and technical specifications about submission of paper or for any other questions, please contact Robert Ramarui, at Business Ed. Office, Temekai Bldg. at 488-2471 ext.240.

(Continued from page 1)
book allowances, meals and basic incidentals. Emesiochel took Japanese Language as a required course for her major in Tourism and Hospitality at the College. It was in this class that her instructor, Yuko Sawada encouraged her to apply for the program. Aside from her interest in the language due to her field of study and preparation for a future career, Emesiochel also has a personal interest in learning the language. Having Japanese blood due to her grandfather being Okinawan, she wants to learn the language and culture of her ancestors.

Asked what she thinks about being selected, Emesiochel replied, "I am very excited. I encourage other students to study hard and urge them to learn the Japanese Language so that they may be able to participate in the program next year. It is also a great opportunity for students. I would also like to take this opportunity and thank Japanese instruc-

Over a Hundred Students Attend "Tuesday Night" Program



"Tuesday Night" program guest speaker, Joaquina Ulenghong from Bureau of Public Health. Earlier this week, Student Life office hosted the first fall 2007 "Tuesday Night" program at the cafeteria. One-hundred eleven (111) dorm residents attended the program to hear words of wisdom from Ms. Joaquina Ulenghong, Nurse Supervisor of the Bureau of Public Health, Ministry of Health. Ulenghong talked to the students about Family Planning and Safe Sex. She explained to the students the pros of safe sex and the cons of unsafe sex. She urged the students to utilize the available health centers

tor, Yuko Sawada for her encouragement and support".

The program is made available through the Japan Foundation, a non profit government organization created to facilitate and promote the study of Japanese culture, language and history around the world. This is the third time that a PCC student has been selected to participate in the Japanese-Language Program, Overseas Student (Outstanding Students). The first recipient was Zillah Mereb in 2005, and then Ltetlak Fritz in 2006. Palau qualified for such a program due to the increase in the number of students studying the Japanese Language in the schools of Palau. The program will host participants from around the world including one (1) participant from each of the following Pacific Island nations: Federated States of Micronesia, Fiji, Marshall Islands, Papua New Guinea, Tonga, Vanuatu, and Palau.

at the Belau National Hospital, Palau High School, as well as the campus Health Resource Center. She also encouraged them to practice safe sex and abstinence until the time they are mentally, physically, and financially ready to deal with the consequences of unsafe sex (sexually transmitted infections, pregnancy, etc.). Afterwards, the students enjoyed a special number from the Bethania Alumni while enjoying delicious snacks prepared by the cafeteria staff. "Tuesday Night" program is held every last Tuesday of the month for dorm residents to showcase valuable tips about living healthy lives, being good students, and being good members of the community.



Dorm residents gather to cheer the Bethania Alumni perform a special number at the cafeteria on Tuesday.