



Dr. Marikis Alvarez (l), Director of the George Washington Carver Agricultural Experiment Station - Tuskegee University (TU) with Dr. Aurora Del Rosario of PCC-CRE, recently visited Palau Community College. His visit to PCC was specifically to see our own Cooperative Research and Extension (CRE) program and to identify areas of mutual concern and interest that the two institutions can collaboratively pursue.

Pacific Care Insurance Update Adding Newborn Dependents

PCC received a letter from Pacific Care Health Insurance (college's health care provider) reminding all employees enrolled in Pacific Care Health Insurance Program that, *newborn dependents* must be added to the health insurance plan **within 31 days of birth**. If the *newborn* is not added within this time limit, they have to wait until the following year at renewal of the health insurance plan. If you have questions regarding this matter, please see Karen or Leo at the Human Resources Office or call 488-2471, ext. 228.

Mesekiu's News
Palau Community College
P.O. Box 9
Koror, Palau 96940

Need Help? Com'on Over!

Developmental English and Math tutoring available at the Project Beacon Math & English Center. Students who need help with assignments or want to review for a tests are welcome to drop by anytime. The Project Beacon staff are ready and happy to assist you. Come over!!!

TOEFL Information for School Year 2000-01

Test Dates	Registration deadline	Scores mailed
Oct. 21, 2000	Sept. 4, 2000	Nov. 29, 2000
Jan. 20, 2001	Dec. 4, 2000	Feb. 28, 2001
May 12, 2001	Mar. 26, 2001	June 20, 2001

* Registration fee is \$110 and you may contact the PCC Counseling Office at 488-3036 for more information.

Graduate Record Examination (GRE) Test

The GRE test for school year 2000-2001 will be administered on October 14, 2000 at Palau Community College. The registration fee is \$125.00

Interested individuals may contact Marensia Edward, Palau GRE Center Supervisor at 488-3036.

Celebrating Birthdays



Joe Chilton	September 30
Estenso Faungy	October 4
Jose Azuma	October 5

Happy Birthday to you all !!!



Palau Community College MESEKIU'S NEWS

FREE COPY



Friday, September 29, 2000

Weekly Newsletter

Volume 2, Issue 38

IMLS Grants \$137,546 to PCC Library and Belau National Museum

On September 20, 2000, a very excited Jane Barnwell, PCC Librarian sent an e-mail communication to President Patrick U. Tellei with news that the college was one of fourteen successful recipients of the U.S. Institute of Museum and Library Services (IMLS) National Leadership Grant (NLG). This grant competition was a collaborative effort of the PCC Library and the Belau National Museum (BNM). IMLS encouraged collaborative projects between museums and libraries in this highly competitive grant program.

PCC Library and BNM staff will work closely on this ambitious project to emphasize the Micronesian region's unique environment and also to serve as a model for other communities that are "geographically remote and economically disadvantaged," as stated in the grant award program press release. The grant will also serve to help both PCC and BNM as they, by working together, develop information as well as services that are responsive to the needs and expectations of both local and outside users of the collections.

The \$137,546 grant will fund a two-year project which will increase and improve access to the image archives of the BNM. More than 30,000 images from the Museum's photo archives as well as images of the collection's objects will be digitized and cataloged. The cataloging records will be available in the PCC Library online catalog, with clickable links to the digitized images. In the course of the project, the PCC Library online catalog will become Web-based (accessible through the Internet), so interested persons world-wide will have access to this important resource. Likewise, the digitized images will form the core of the Belau National Museum website. This linkage will be a tremendous technological advancement for our respective institutions. The end result will assist generations of Palauan students and citizens to learn about and appreciate their environment and culture through expanded access to the images.

This improved access will also serve an important role in the preservation of the images, and handling of the original.

2 PCC Students to be Awarded Prince Leeboo Scholarship During Unveiling Ceremony

Two of the Palau Community College's students will soon be happy-recipients of the newly-established Prince Leeboo Scholarship. The scholarship which is sponsored by the Prince Leeboo Society will be giving two separate \$500 dollars scholarships to the two selected students.

The Prince Leeboo Scholarship recipients will be announced and awarded on Monday, October 2, during the unveiling ceremony of the Prince Leeboo Statue in front of Palau Community College.

For additional information on this scholarship and others currently being offered by PCC, please contact the PCC Development Office at 488-2471, ext 253.

**PCC THANKSGIVING DINNER
FUND RAISER
NOVEMBER 22, 2000
PALAU PACIFIC RESORT**

Buy your Ticket(s) to an elegant dinner and chances to win fabulous prizes! Call us at PCC Development Office telephone number 488-2471 for more information or how to go about purchasing your ticket(s) today! So hurry, only 550 tickets are available and if last year was an indication, this year's tickets will be sold out real fast!!!

Proceeds of the dinner go to the PCC Endowment Fund.

ADULT HIGH SCHOOL PROGRAM FALL 2000

The Palau Community College Adult High School offers three classes in its first cycle to students who have not finished high school and want to get their high school diplomas. The classes offered are Government & the Law, Consumer Math and Community Services. Three teachers have been selected to teach these classes. Joe Pedro teaches Government & the Law, Martina Basilius teaches Consumer Math, and Basilio Deltang teaches Community Services. The Adult High School Director Laura Mangham has two office staff working with her, Lorraine Rdiall and Secundina Azuma.

The class schedule are as follow:

Class	Day	Time	Room
Community Services	Monday & Friday	3 to 5pm	AHSC
Consumer Math	Tuesday & Thursday	5:30 to 7pm	AHSC
Government & the Law	Tuesday & Thursday	5:30 to 7pm	#50

For further information, call Laura Mangham at Telephone #488-2470 or 2471

Announcement to All PCC Staff & Faculty

The Office of Human Resources is happy to announce to all PCC staff and faculty that in October 2000, PCC will join Palau Civil Service Pension Plan. Like any other retirement plan, the Palau Pension Plan charges premiums from each individual member. In this case, Palau Pension Plan charges 6% of current salaries.

Our Business Office will assist in the payment of plan premiums by withholding 6% of your bi-weekly pay and to transmit the payments to Pension Plan.

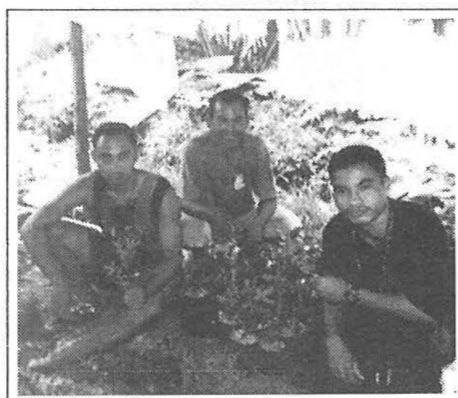
Our first premium payment is due on October 20, 2000. You will notice a 6% reduction on your check on this date.

Unfortunately, this wonderful pension is only open to Palauans, FSM and Marshall Islands.

If you have any questions or need to know the level of your contributions, please do not hesitate to stop by at HRD and see Karen or Leo.

HRD is also proud to announce that Senna Azuma, a long time personnel manager has moved to the PCC Adult High School Program. She will do both administrative and instructional work for this brand new program. Ms. Karen Mobel is now our new personnel manager. Karen is being assisted by a student worker, Ms. Sidney Kemper. These two friendly ladies are willing and ready to assist you with your evaluation, insurance, employment contract, etc. Stop by the Human Resources Office and let them help you.

Thank You, Tropical Landscape Nursery



From left to right, PCC student Fred Ikertang, landscaper Jerry Maquiling, PCC student Pong Chingyan.

The Agricultural Science Program would like to thank the Tropical Landscape Nursery in Airai for providing hands-on learning experience to the students enrolled in AG 216, Tropical Landscape Horticulture. If you have a landscaping business or a farm and would be willing to provide a similar experience to advanced students, please contact Joel Miles at 488-2471.

Division of Agriculture and Marine Resources Thanks PCC

Mr. Marcello Brel of the Division of Agriculture and Marine Resources recently wrote a letter to thank PCC for providing the assistance of Dr. Joel Miles to help with the aerial survey of invasive species of Palau.

In his letter addressed to the Dean of Academic Affairs Alvina Timarong, Mr. Brel said, "Dr. Miles was a great help with the survey and we are grateful to Dr. Miles and to PCC for his expert assistance in our joint effort to eradicate invasive weeds posing threats to Agriculture and Forestry in Palau."

Shining Stars for this Week

Congratulations to the following students who have successfully completed all 30 points of reading at project beacon.

Rosalita John

Jordan Siugresh

New Students Grade College Services During Fall Orientation

The new Fall 2000 students took part in an orientation service quality survey conducted by the Retention Office. Using the A-F grading scheme, the various services received the following grades:

Morning Assembly	B
Pre-advising Session	B
Ice Breaking Activity	B
Project Beacon Information	A
Library Information	A
Campus Tour	A
Student Employment Overview	B
SBA, Clubs/Organization Info.	B
Course Selection with Advisors	A
Registration at Admissions	A
Student ID Card Processing	A

The students were asked to specify reasons why a given service was not satisfactory. As it is the intention of the college to continuously improve the quality of its services, these specific information will help guide service providers in their quest to continually improve the services they provide.

Final School Days Left to Remove Incomplete Grades

Final day to remove incomplete grades for summer 2000 is Tuesday, October, 2000. Students with incompletes are encouraged to see their instructors as soon as possible and complete their work in that course. Please do it and good luck.

Attention Contributing Writers

Any student, faculty or staff are asked to submit their article to Armstrong or Dilubch at the Development Office no later than 3:30 p.m. on Wednesdays

Un-Official Results for SBA Elections

Student Trustee

Gwendolyn Sisor 245 votes

President

Analiza Ililau (Write-In) 118 votes

Francis Silk 107 votes

Secretary

Charlene Kaud Omelau 217 votes

Patrick Bells 18 votes

Treasurer

Lynna Thomas 22 votes

Sofaia Mekkoll 13 votes

Analiza Ililau 13 votes

Sophomore Representative

Epsie West 61 votes

Daisy Ulitch 04 votes

Freshmen Representatives

Michelle Mengidab 15 votes

Cheryl Adachi 09 votes

Limei Meyar 08 votes

Students: Type Your Papers at the SBA Office

The computer lab in room #60 will be open on Tuesday, Thursday and Friday from 1:00 - 4:30 p.m. Also the SBA office will have some computers available for students who wish to type their papers; hours will be posted on the SBA bulletin board; please utilize the library for e-mail and internet services, the library staff will be happy to assist you.

Academic Calendar, Fall 2000

October 3	Last day to remove Incompletes
October 9-13	Mid-term period
October 20	Last day for all withdrawals
October 24	Holiday: United Nations Day
November 23	Holiday: Thanksgiving Day
November 23-24	Students Thanksgiving Day
December 8	Last day of instruction
December 11-13	Final examination period
December 15	Grades due
Dec. 15- Jan. 1, 2001	Fall Recess