

TRIP TO NGERMESKANG, A Fun and Learning Experience

(This Article submitted by PCC Student Olkeriil J. Yaoch)

On Thursday afternoon, September 6, we the Agriculture students had a trip to the PCC-CRE Research and Development (R&D) Station at Ngermeskang located at Ngaremlengui State. R&D is a station located at Ngermeskang which is under PCC. In this station there are many different kinds of rooms for different purposes. The only room that I was interested in is the tissue culture lab. I am interested in that certain lab because I want to learn how to produce more plants using only one certain kind of plant.

When we finished touring the building we went to the farm. We did some work. The first work that we did was pulling cassava and cleaning them. The second is that we all used the tiller to till the farm. And when we finished we cleaned the farm where the cassava was planted. We also toured the pond for the shrimp. Our field trip was really fun and we also learned many kinds of work for Agriculture.



Great Laboratory Work!

(This Article submitted by PCC Student Jamaira Olkeriil)

On Thursday, September 06, 2001, there was a trip to Ngaremlengui State. The trip was arranged as a part of our lab assignment to go and visit a reserved agricultural area at Ngermeskang. Its main aspect focused on visiting the farms there and learning more about the many methods and techniques used in farming, as well as, the diversity of plants grown there. The trip was basically led by Dr. Del Rosario, along with Mr. Joel Miles, our instructor. It was considered both very fun and very educating.

The building there at Ngermeskang served as a basis for laboratory research, focusing mainly on the fields of agronomy and horticulture. Extensive research has really paid off. Right now they are practicing what is known as tissue culture, a process of plant propagation, to produce more plants much faster and easier. Now 22 varieties of sweet potatoes with colors of yellow, white, orange, and purple, 30 varieties of tapioca, and 68 varieties of taro, are present at the reserved area. But they are still in the process of developing an aquaculture area, focusing first on shrimps that they have.

The only problem they have encountered was the red spider mite. It has brought damage to cassavas, mainly those we call "klerang". Fortunately, there are insects that have control over these spiders. These are called "gall fly". In addition, as part of the trip, we got to harvest some of the cassavas.

Jesita Pedro Wins *Mesekiu's News* Challenge "D"

PCC student Ms. Jesita Pedro has won the latest *Mesekiu's News* Challenge. She correctly located Dean of Academic Affairs Alvina Timarong's office as being located in the "Carpentry Building". Dean Timarong's number is 488-2470/2471, extension 246. She majored in Bilingual Education at the University of Hawaii-Manoa, and is now pursuing her master's in educational leadership through the San Diego State University's on-line program. Three of Dean Timarong's major responsibilities here at the College include: Program and Curricula, Instruction, and Course offerings/scheduling. Dean Timarong's favorite dessert is Cream Pie. Congratulations to Ms. Pedro on her win. Meanwhile, look to future issues of this newsletter for more challenges!

Celebrating Birthdays

Joe T. Chilton	September 30
Ostenson Faungy	October 4
Jose Azuma	October 5
AnnSabra Vanoosterweyck	October 6

Happy Birthday To You!!!

Mesekiu's News
Palau Community College
P.O. Box 9
Koror, Palau 96940



Palau Community College

MESEKIU'S NEWS

FREE COPY



Friday, September 28, 2001

Weekly Newsletter

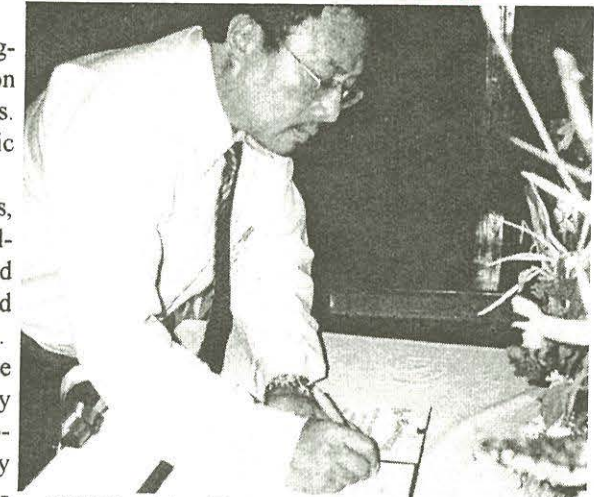
Volume 3, Issue 39

Memorial Service Held for Victims

Two weeks after the September 11, 2001 terror attacks in New York, Washington D.C., and Pennsylvania, the Republic of Palau held a moving memorial service on the grounds of the PCC campus, to remember and honor the victims and their families. The evening service brought the entire leadership of the country together and the public turnout was such that some had to remain standing throughout the service.

From ROP President Remengesau's speech to that of High Chief Ibedul's, from High Chief Reklai's to that of Senate President Andres, and from House of Delegates Vice Speaker Umetaro's speech, there was one common thread: The nation and people of the Republic of Palau join the United States in their time of mourning and stands ready to assist America in its ultimate goal of wiping terrorism from existence.

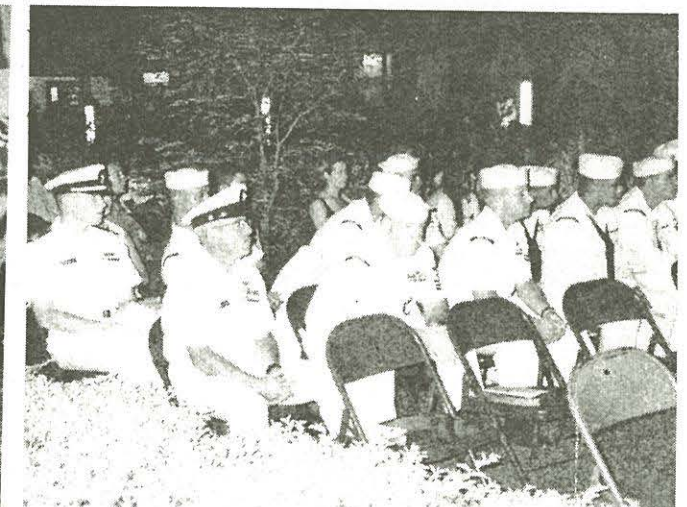
During the service, choirs from many local churches sang hymns and scripture was read by church leaders. The service ended with the singing of Amazing Grace by everyone in attendance. After the service, over three hundred people signed the Condolences Book and lay flowers on a shrine set up in the PCC Mesekiu el Bai. Many people also brought candles and placed them on the shrine as well, which will be maintained for the foreseeable future. The Condolences Book has been placed at the PCC Front Office, and will remain there for about one week, for anyone who would like to sign it.



ROP President Tommy E. Remengesau, Jr. signs the Condolences Book at Palau's Memorial Service held to remember the victims and their families



Bilung Gloria G. Saliil(l), Chairperson of the PCC Board of Trustees, signs Condolences Book. Ms. Deborah Sebalt(r) also signs the book.



Members of the Civic Action Team attend the memorial service to remember their fellow Americans who were victims of the September 11 attacks.

Thanksgiving Tickets on Sale Next Week! See Page 2 for more information on the fund raiser and how you can get your winning ticket(s).

ANNOUNCEMENT FOR NATIONAL UNIVERSITY APPLICANTS

Recently, PCC has been receiving inquiries about National University's (NU) on-line bachelor and master's programs. While PCC hosted National University's seminar held in Palau this summer, we do not have all information pertaining to NU's on-line admissions process.

At the same time, any and all individuals who are interested in enrolling in the National University's on-line program may obtain more detailed information from Mr. Brian Jensen at the following e-mail address: bjensen@nu.edu, as he may be just the person to answer any questions you have. Good luck and if you still have any questions, please do not hesitate to contact Eileen Babauta or Jay Olegeriil at PCC telephone number 488-2470/2471.

Thanksgiving Tickets Available Next Week!

The annual campaign for the Palau Community College Endowment Fund officially begins next week with the PCC Board of Trustees, President Tellei, and PCC staff going out to sell tickets to local residents, businesses, and any group/individual willing to donate to the College's endowment fund.

This year's fund raiser will be different as it will take place in the afternoon of November 21, 2001 right here on the College campus. The major part of the event will simply be drawing of the winning tickets for the many wonderful prizes that have already been secured. If you have yet to make up your mind about purchasing tickets, let us inform you of just some of the prizes we have. For example, some of the prizes include one year of free cable, complete computer systems, overnight stay at local hotels and rock island resorts, beauty packages, overnight fishing trip, and even some very big cash prizes!

This year's tickets will be for only \$10 each, a big decrease from last year's ticket price. Therefore, more people will be interested in buying tickets for this year's fund raiser. But like last year, this year will have only a limited number of tickets so you better get your ticket(s) soon. Remember, as PCC is a non-profit organization, your donation to the PCC endowment fund entitles you to claim and receive up to 10% of your taxable income. In other words, you donate to PCC and receive your ticket, have a chance to win one or more of the great prizes, and in the end get your money back!

Now, if you are ready to purchase your winning ticket(s) or would like to find out more about the fund raiser, or the PCC Endowment Fund, please do not hesitate to contact Jay Olegeriil or anyone at the PCC Development Office at telephone number 488-2470/2471.

PCC Endowment Fund At a Glance:

Established for the purpose of securing Palau Community College's financial stability so that it will continue to provide educational and training opportunities for Palau and the Pacific region for years to come. With a goal of \$10 million, the PCC Endowment will not be withdrawn until it reaches the stated goal. The Palau National Government has from time to time contributed to the PCC Endowment Fund through appropriations. In fact, the ROP government is to date the biggest contributor to the PCC Endowment Fund, having appropriated more than \$150,000 to the fund.

More than one hundred PCC and government employees donate to the Endowment Fund every payday. Many state governments, local businesses, agencies, and individuals have contributed to the Endowment Fund at least once. As PCC is a non-profit organization, donations of up to 10% of anyone's/company's income tax may be refunded. PCC is always encouraging everyone to donate to the PCC Endowment Fund. Together, let us secure the education of Palau's future generations!

BANK OF HAWAII SCHOLARSHIP FOR PCC STUDENTS

At the Bank of Hawaii-Koror Branch's 40th Anniversary Dinner at the Palau Pacific Resort, Bank Manager Stephen Brock presented a \$10,000 check to the Palau National Scholarship Board. This donation by Bank of Hawaii will be used to award students attending Palau Community College. Ms. Caroline Skebong, Treasurer/member of the board, thanked Bank of Hawaii and accepted the check on behalf of the board.

At the present, the Scholarship Board is developing forms and other necessary preparatory work in order to launch the Bank of Hawaii-Koror Branch Scholarship within this school year 2001-2002. In order to expedite this work, the Scholarship board has established a committee to work on this project.

Palau Community College commends Bank of Hawaii for its commitment to the higher education needs of Palau's students and encourages other local business institutions to follow this noble example of corporate citizenry.

PCC Library Hours

Monday – Friday
8:00 am – 8:00 pm

Saturday
9:00 am – 6:00 pm

Sunday
12 noon – 6:00 pm

For PCC Library programs and services, contact PCC Librarian Debra Neas at telephone number 488-2470/2471, extension 261.

PCC Bookstore Hours

Monday – Friday
8:00 am – 4:30 pm

Saturday & Sunday
CLOSED

For PCC Bookstore information, contact Ms. Helene Moros or Gibson Towai at telephone number 488-2470/2471, extension 236.

RETENTION WEB PAGE

PCC Retention Office, Tel. #: 488-2471, ext. 247

25 Ways To Get The Most Out of Now, Continued from Issue #37 of Mesekiu's News

Things you can ask yourself when you get stuck

16. **Ask: What is one task I can accomplish toward my goal?** This is a useful technique to use on big, imposing jobs. Pick out one small accomplishment; preferably one you can complete in about five minutes; then do it. The satisfaction of getting one thing done often spurs you on to get one more thing done. Meanwhile, the jobs gets smaller.

17. **Ask: Am I being too hard on myself?** If you are feeling frustrated with a reading assignment, noticing that your attention wanders repeatedly, or falling behind on problems due for tomorrow, take a minute to listen to the messages you are giving yourself. Are you scolding yourself too harshly? Lighten up. Allow yourself to feel a little foolish and get on with it. Don't add to the problem by scolding yourself.

Worrying about the future is another way people beat themselves up: "How will I ever get this all done?" "What if every paper I write turns out to be this hard?" "If I can't do the simple calculations now, how will I ever pass final? Instead of promoting learning, such questions fuel anxiety.

Labeling and generalizing weakness are other ways people are hard on themselves. Being objective and specific will eliminate this form of self-punishment and will likely generate new possibilities. An alternative to saying "I am terrible in algebra" is to say "I don't understand factoring equations." This suggests a plan to improve.

18. **Ask: Is this a piano?** It means perfection is not necessary. Ask yourself if what you are doing needs to be perfect. A related suggestion is to weed out low-priority tasks. The to-do list for a large project can include dozens of items. Not all of them are equally important. Some can be done later on, and others could be skipped altogether if time is short.

Apply this idea when you study. In a long reading assignment, look for pages you can skim or skip. When it is appropriate, read chapter summaries or article abstracts. When reviewing your notes, look for material that may not be covered on a test, and decide whether you want to study it.

19. **Ask: Would I pay myself for what I'm doing right now?** If you were employed as a student, would you be earning your wages? Ask yourself this question when you notice that you've taken your third popcorn break in 30 minutes. Most students are, in fact, employed as students.

They are investing in their own productivity and paying a big price for the privilege of being a student. Sometimes they don't realize what a plain, ordinary job may cost them.

20. **Ask: Can I do just one more thing?** Ask yourself this question at the end of a long day. Almost always you will have enough energy to do just one more short task. The overall increase in your productivity might surprise you.

21. **Ask: Am I making time for things that are important but not urgent?** If we spend most of our time putting out fires, we may feel drained and frustrated. This happened when we forget to take time for things that are truly important but not urgent.

22. **Ask: Can I delegate this?** Instead of slogging through complicated tasks alone, you can draw on the talent and energy of other people. Instead of making a trip to the library to look up a simple fact, call and ask a library assistant to do it. These tactics can free up extra hours for studying.

It's not practical to delegate certain study tasks, such as writing term papers or completing reading assignments. However, you can still draw on the ideas of other people in completing school tasks. For instance, form a writing group to edit and critique papers, brainstorm topics or titles, and develop lists of sources. If you are absent from a class, find a classmate to explain the lecture, discussion, on any assignments due. Presidents depend on briefings. You can use the technique too.

23. **Ask: How did I just waste time?** Notice when time passes and you haven't accomplished what you planned. Take a minute to review your actions and note the specific ways you wasted time. We operate by habit and tend to waste time in the same ways over and over again....

24. **Ask: Could I find the time if I really wanted to?** Often the way people speak rules out the option of finding more time. An alternative is to speak about time with more possibility.

The next time you're tempted to say, "I just don't have time," pause for a minute. Question the truth of this statement. Could you find four more hours this week for studying? Suppose that someone offered to pay you \$10,000 to find those four hours. Suppose, too, that you will get paid only if you don't lose sleep, call in sick for work, or sacrifice anything important to you. Could you find the time if vast sums of money were involved? Remember that when it comes to school, vast sums of money are involved.

25. **Ask: Am I willing to promise it?** This may be the most powerful time management idea of all. If you want to find time for task, promise yourself and others that you'll get it done. To make this technique work, do more than say that you'll try or that you'll give it your best shot. Take an oath, as you would in court. Give your word....