

Alumni Notes

Class of 2009 (PCC)

Ador Shirai -



2009 PCC graduate with an Associate of Science (AS) degree in Office Administration. Shirai who is a native of Chuuk was hired immediately after graduation by the Ministry of Health as an Accounting Specialist.

Class of 2006 (PCC)

Jenkins Mariur -



2006 PCC top honor graduate with an Associate of Science degree in Criminal Justice. Mariur joined the workforce many years ago. Starting as a boat operator for Koror State Government during the Trust Territory government. Upon

the installation of the Palau constitutional government, he took a post as a personal security guard for congressional members. In 1990, he accepted a post with the Palau Immigration Office, and while working, he took classes and eventually obtained his AS degree in 2006. After nearly two decades with the immigration office, Mariur was promoted last year to become the Director of the Palau Immigration Office.

Class of 1972 (MOC)

Maria Imodrang -



1972 MOC graduate with a Vocational Certificate of Achievement (VCA) in Food Services. Imodrang moved to Saipan after graduation and opened a cleaning business (Tuff) with her husband. She is

now retired and enjoys spending her time with family and friends.

Alumni Notes showcases MOC&PCC alumni who contribute to the quality of life in their local community and are positive role models for other PCC students to emulate. If you are that alumni or know someone who is, please contact the PCC Development Office at telephone number 488-2471. We would like to feature you in future issues of the *Mesekiu News*.

Mesekiu News
Palau Community College
P.O. Box 9, Koror, Palau 96940

Celebrating Birthdays

Harline Haruo January 15
Arbedul Koshiba January 22
Epi Moses January 28
Winfred Recheungel January 28

Happy Birthday To You!

OPEN Season for Endowment Fund New Members Registration Ongoing

This week, we welcome more new members to the PCC Endowment Fund club. Glaudine Gabino of PCAA and Christopher Debengek from the Ministry of Education.

The PCC Development Office is now processing refund applications for all government and non-government employees. So if you have not filed your income tax refund application yet, stop by the Development Office and complete your application.

Don't forget to bring the following:

- ✓ Check stub #26 or Wages & Tax Form for year 2009.
- ✓ Original receipts for your donations to other non-profit organizations.

To find out how you can join the hundreds who are already giving to the Endowment Fund, contact the PCC Development Office at 488-2471, ext. 253, if you can't come to the office, contact the office at 488-2471, ext. 253 and we'll send someone to find you.

Advertise with Mesekiu's News

Support the community and distribute your message to 1000's of individuals.

Each week we reach

- 50+ local businesses
- 1000's of individuals
- In 8 countries

We design your ad free of charge.

- Promote your business.
- Sell a car.
- Advertise an event.
- Post community messages.

We can do it!
call 488-2470 ext. 253

PCC BOOK STORE

Lowest Prices in Palau
\$2+ Bento Box
70¢ Candy bars
50¢ Softdrinks

"Eco-friendly" lunch bento are made fresh daily at rock bottom prices. Also available: cup of noodles, canned meats, crackers, chips, and more. Music CDs by Palauan artists also available.
Call us at 488-2471, ext. 236, or drop in for a visit.

PCC Takes Part in BMS and PICRC Fundraising Tournaments

The PCC Mesekiu Softball Team represented the College in two fundraising tournament over the weekend: Belau Modekngai School (BMS) at Ibobang; and Palau International Coral Reef Center (PICRC) at Meyuns field.

In the BMS tournament, Mesekiu went off to a blazing start by defeating their first two opponents in a convincing fashion (PCC 21-Airai 8; PCC 25 - Ngatpang 5) to remain in the winning bracket. However, on the second day of the tournament Mesekiu was quickly eliminated, loosing to Airai and Ngermid.

With the elimination from the BMS tournament, Mesekiu was able to focus its efforts on the PICRC tournament at Meyuns ballfield. They fought their way into the championship against an undefeated PICRC team. Down by 5 runs in the bottom of the seventh and final inning of the first game of the championship, Mesekiu went dip on homeruns by Nelson and Reagan to steal the game from the shocked PICRC players and fans.

Following a 15-minute break, the two teams went at it again exchanging leads and entertaining the crowd with exciting defensive plays and tape-measure offensive performances. Despite superb offensive output from Mesekiu, they came up short losing by a score of 18 - 16. The young PICRC team was crowned the Champions and PCC the Runner-up.

Vacancy Announcement

- (1) Director, Student Life Office
Salary range: \$16,010-\$24,647
- (1) Counselor, Student Life Office
Salary range: \$12,653-\$19,479

For application forms and information, please contact Karen Mobil at the PCC Human Resources Office at 488-2470/71, ext. 227.

FREE!!!

Palau Community College



Friday, January 22, 2010

Weekly Newsletter

Volume 12, Issue 4

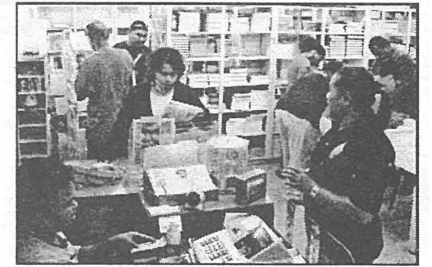
Spring Enrollment Rivals Fall

As anticipated, this spring semester's enrollment continued to rise as more students made late registration this week. In fact, according to records, it is the first time in the last five years that the spring enrollment has reached and gone over the 600 mark. The last time such high numbers have been logged was in 2004 when spring

enrollment reached 646, with the all time high in 2003 at 670.

The six hundred mark is normally seen during fall semesters when the enrollment swells from the influx of new high school graduates. Registration records though indicate that the sharp rise in this spring enrollment is due to a larger than

See Enrollment on Page 2



New and continuing students make the vital stop at the college bookstore for all required textbooks and other supply items during the first day of instructions on Monday.

Fall 2009 Scholastic Honors

Thirty-nine (39) students made the PCC Scholastic Honors List according to a report from the registrar's office that came out at the end of 2009.

According to the report, students in the Tourism & Hospitality (TH) and Liberal Arts (LA) programs dominate the President's List (students with a semester GPA of 4.0) with four in TH and three in LA. For the Dean's List, three made the cut

while a whopping twenty-five (25) made the honor's list. Congratulations to all who made it on the PCC Scholastic Honors List and continued success this Spring semester.

PRESIDENT'S LIST (Semester GPA - 4.00)				
STUDENT	MAJOR	CREDITS	GPA	
1	LOWEL ISRAEL ABRAHAM	AC	12.00	4
2	CODY T. AICHI	LA	12.00	4
3	JADE N CRUZ	THHM	14.00	4
4	SANDY FERNANDEZ	LA	13.00	4
5	FELISTO S. MARKUB	THTS	12.00	4
6	JOANNIE D MARVIN	THHM	12.00	4
7	AQUILLA MASAMI	LA	13.00	4
8	JANNIE LAYNE A. NIRO	OA	12.00	4
9	CHERIE LYNN T RENGIL	UND	13.00	4
10	MARK N. TEMOL	THFB	12.00	4
11	DANNIES U UEHARA	IT	12.00	4

DEAN'S LIST - HIGH HONOR (3.80 - 3.99)				
STUDENT	MAJOR	CREDITS	GPA	
1	AMMYQUEEN RIUNGEL	CT	13.00	3.85
2	DANTE C. RENGIL	UND	16.00	3.81
3	LASKER CHIN	BU	15.00	3.8

HONOR (3.50 - 3.79)				
STUDENT	MAJOR	CREDITS	GPA	
1	JERRYLEE HAPTHEYCHOG	CT	14.00	3.79
2	DANIEL R HANSER	LA	16.00	3.75
3	SWEETY S. KALBESANG	OA	12.00	3.75
4	ZONIA A KOTARO	BU	12.00	3.75
5	JAMES J LEEROY	LA	12.00	3.75
6	KRISTY U. OLKERIIL	LA	12.00	3.75
7	LYNDON MASAMI	ES	15.00	3.73
8	OBECHOU K. MEREB	LA	12.00	3.67
9	BRADFORD I. BLALUK	CJ	16.00	3.63
10	MICHELLE UEDA	LA	15.00	3.6
11	ALEXANDRA PATRIS	AG	12.00	3.58
12	PALOMA U MATSUOKA	THHO	14.00	3.57
13	KLERANG K. RECHEKED	LA	14.00	3.57
14	CHANDLER K. NGIRMERIIL	LA	14.00	3.57
15	SIDNEY RENGULBAI	CT	14.00	3.57
16	JORDAN YURI	THTS	14.00	3.57
17	VOLETTE S. POLLOI	CJ	13.00	3.54
18	LIZBETH U. SKARUNO	IT	13.00	3.54
19	JITIBON KAIIOUS	ET	15.00	3.53
20	BONITAADERIANO	OA	12.00	3.5
21	JASON HENSON	OA	12.00	3.5
22	CARLSON J. LANGBATA	AC	12.00	3.5
23	JEWISH O. NGIRAIKELAU	OA	12.00	3.5
24	ALA-LOFTY C. ONGALIBANG	AM	12.00	3.5
25	A-ICHEA N. YAMADA	BA	18.00	3.5

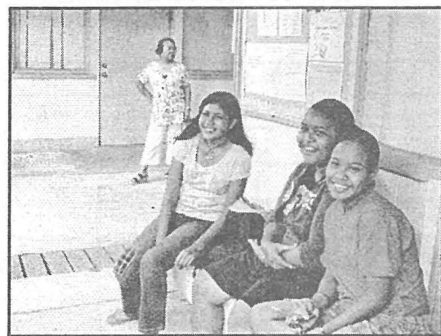
AC- Air Conditioning & Refrigeration Tech.; AG- Agricultural Science; AM - Auto-mechanics Tech.; BA- Business Accounting; BU- Business Administration; CJ- Criminal Justice; ES- Environmental/Marine Science; ET- Electrical Tech.; IT- Information Tech.; LA- Liberal Arts; OA- Office Administration; THFB-Tourism & Hospitality-Food&Beverage; THHM- Tourism & Hospitality-Hotel Management; THHO- Tourism & Hospitality- Hotel Operations; THTS- Tourism & Hospitality-Tour Services; UND- Undeclared.

Enrollment, from Front Page

usual number of students returning back to school after a number of years on break or in the workforce. Furthermore, a sizeable number of recent high school graduates who opted to forego enrollment during fall semester are now enrolling this semester. This is great news all around as more students translate into more funding that can then be used to further improve and expand programs and services at the College.



New students lounge around and get to know each other in between classes.



PCC Officials in Yap to Establish Certification Program

Associate Dean of Technical Education Sherman Daniel and Dean of Continuing Education Willy Wally were dispatched by President Tellei to the island of Yap this week to assist the Yap Department of Education develop a teacher certification program.

According to Dean Wally, the program will train and certify teachers at both the elementary and high school levels, producing individuals capable of teaching vocational trades such as agricultural science, automotive mechanics technology, construction technology, and even home economics.

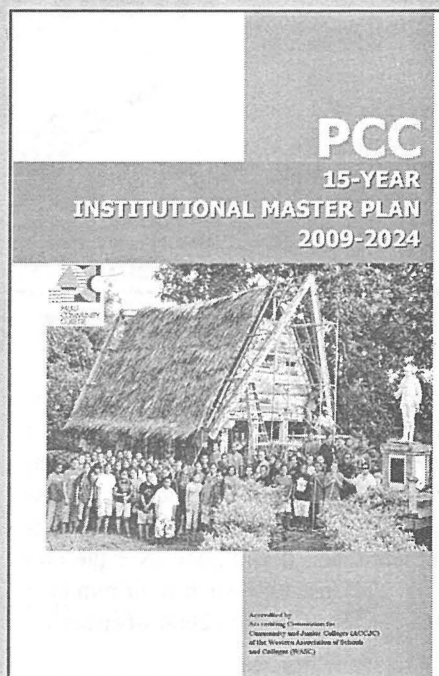
Wally said that once the program is in place, PCC will initially be sending instructors to Yap each semester to teach courses until such time the program has

PCC 15 Year Institutional Master Plan Now In Print

After a year and half of work that involved everyone from students and staff to faculty and administrators, including community members, the writing of the PCC 15 Year Institutional Master Plan is now complete. According to Institutional Researcher Ligaya Sara, the master plan is a medium/long range planning document that outlines major goals and objectives and sets the overall direction of the institution for the next 15 years. She said that it is a similar document to the first PCC master plan (PCC 10 Year Institutional Master Plan) which was in use from 1997-2007.

Sara, who is one of the members of the steering committee that spearheaded the writing of the eighty-two page master plan, said that the document is being printed locally and copies should be available as early as next week.

For more information about the PCC 15 Year Institutional Master Plan, contact the IR office at 488-2471, ext. 250.



PCC 15 Year Institutional Master Plan

enough certified teachers to take over instructions.

Wally and Daniel have between them combined, more than half a century of vocational education program start-up and management.



Dean of Continuing Education Willy Wally (3rd-right), Associate Dean Sherman Daniel (2nd-left), and other PCC officials with Yap Apprentice Program students during their training in Palau last summer.

Alum Now at Student Services Office



Verna Kyota

reports directly to the Dean of Students Marenia Edward will handle all secretarial and administrative tasks for Dean Edward and work closely with students.

PCC alum Verna Kyota has been hired as the new secretary at the Student Services office. Kyota fills the vacant position left by former secretary Willa Walter who resigned to pursue other interests. Kyota who

Spring Semester 2010 Academic Schedule for 8-Week Classes

Event	First 8 - Weeks (January 16, - March 06, 2010)	Second 8 - Weeks (March 22, - May 15, 2010)
First Day of Instruction	January 18, 2010 January 16, 2010 (Sat. Classes)	March 22, 2010 March 27, 2010 (Sat. Classes)
Last Day to Remove "I" Grades for Fall 2009	February 26, 2010	February 26, 2010
Midterm	February 8 - 12, 2010 February 6, 2010 (Sat. Classes)	April 12 - 17, 2010
Last Day for All Withdrawals	February 19, 2010	April 16, 2010
Last Day of Instruction / Final Examinations	March 12, 2010 March 6, 2010 (Sat. Classes)	May 14, 2010 May 15, 2010 (Sat. Classes)
Grades Due	March 19, 2010 (by 11:00am)	May 21, 2010 (11:00 am)

BITS AND PIECES...

LIBRARY

PCC Library Hours...

PCC Library Hours:

Mon.-Thurs. 8:00 am – 8:00 pm
Friday 8:00 am - 6:00 pm
Saturday 9:00 am – 6:00 pm
Sunday 12:00pm – 8:00 am
Library contact: 488-3540

TEXTBOOKS

Syllabus for Textbooks...

This is a reminder to all students that in order to purchase your class textbooks, you must first obtain your course syllabus from your instructors. The college bookstore will need to see a copy of the syllabus in order to the right textbooks.

If you have any questions, you may see your advisor or visit the bookstore and talk to Gibson or Hussayn.

Bookstore contact: 488-2470/71, ext. 236

SURVEYS

Submit Your Surveys...

The College IR Ligaya Sara thanks students and staff who participated in the recent Cafeteria and Maintenance satisfaction surveys, and now asks that completed forms for the Human Resource office survey be returned to the IR office. IR contact: 488-2470/71, ext. 250

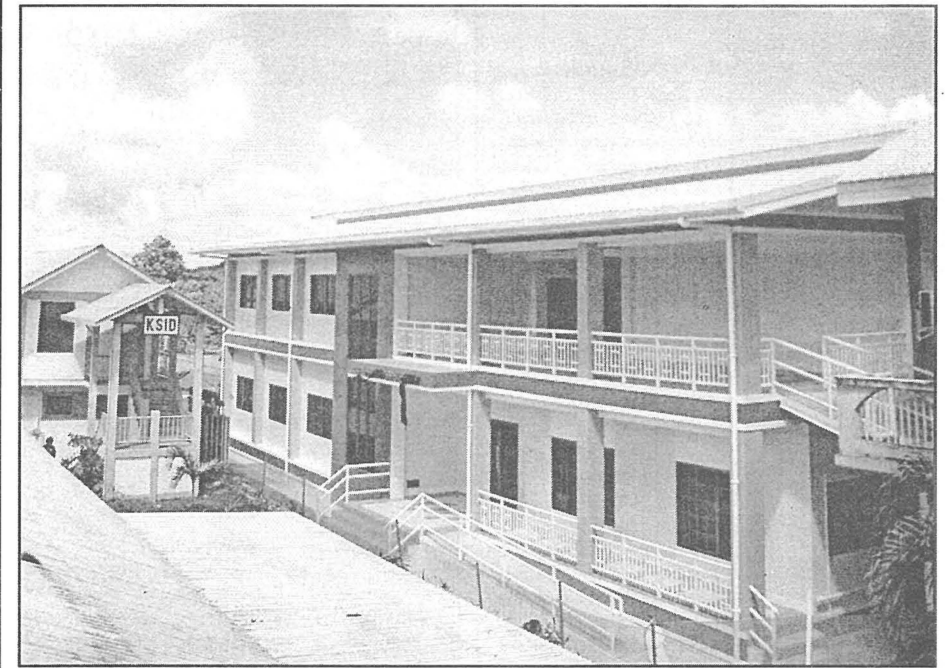
APOLOGIES

Our Apologies...

Our apologies to Lesley Adachi, Mason Ngramolau, and Hussayn Beketaut for the birthday mix-up in the last issue.

Also to Classified Staff Organization (CSO) members and officers for inadvertently printing the incorrect time for the meeting on January 29. The correct time for the CSO meeting is 11:00 am-12:00 noon at the CE Training Room.

Public Welcome at New Library



PCC library

The new PCC Library is now open and welcomes patrons from campus as well as off-campus. Being the biggest library in Palau, the library complex has a vast general collections, a United Nations collections, Micro-Pacific collections, periodicals, Kid's Corner (children's books), media room (DVDs and Videos), and a technology/research center. For guided tours of the new PCC Library, please contact Linda Kloulechad at 488-3540.

Accreditation Officials Here for Preliminary Visit



President Tellei translates Palauan depictions on the Bairra Mesekiu (traditional Palauan men meeting house) during the campus tour with accreditation visitation team chair Dr. Leon Richards and assistant Dr. Salvatore Lanzilotti.

Dr. Leon Richards who will lead the eleven-person accreditation visitation team to PCC in early March and his assistant Dr. Salvatore Lanzilotti were on campus earlier this week to meet with President Tellei and other school officials and students as part of

Interns Hear from PCC's Own Pros

Dean of Continuing Education Willy Wally and Tourism & Hospitality instructor Vicky Maui who are specialists in the areas of customer service, communication, and professional attitude in the workplace conducted a seminar for all PCC internship students earlier this week.

The two experts discussed proper conduct and practices the interns should know as they finish their internship training and prepare to enter the workforce.

ASPC President Sasha Lirow who is working on her internship at the Financial Aid office said that she is very lucky to hear from industry experts such as Wally and Maui. "I took away from the seminar lots of useful information that I will definitely use as I begin prospecting for possible employment.

the preparation ahead of the March visit. Richards and Lanzilotti who met with President Tellei and members of his cabinet on Monday also had the opportunity to meet with PCC Accreditation Liaison Officer Dahlia Katosang, Assistant ALO Deikola to discuss in details the accreditation visitation team's itinerary when they arrive in Palau in March.

For information about the accreditation team visit, contact Dahlia Katosang at 488-2471, ext. 235.