

## Alumni Notes

### Class of 2007 (PCC)

**Ltelatk Fritz** -

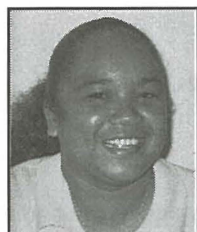


2007 graduate with an Associate of Applied Science (AAS) degree in Tourism & Hospitality-Food & Beverage (THFB). Fritz works at the Palau High School as a Classroom

Teacher 2. She has been working there for the past 5 months.

### Class of 2000 (PCC)

**Jeany Spis** -

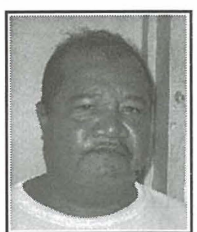


2000 PCC graduate with a Certificate of Achievement (CA) in Office Administration (CA). Spis works at the Social Security Administration as a Benefits & Claim Analyst. She has been

working there for the past 5 years.

### Class of 1977 (MOC)

**Wilhelm Olkeriil** -



1977 MOC graduate with a Vocational Certificate of Achievement (VCA) in Welding (WELD). Olkeriil works at the Bureau of Public Works- Water Distribution as a

Plumber 2. He has been working there for the past 14 years.

**Alumni Notes** showcases MOC&PCC alumni who contribute to the quality of life in their local community and are positive role models for other PCC students to emulate. If you are that alumni or know someone who is, please contact the PCC Development Office at telephone number 488-2471. We would like to feature you in future issues of the *Mesekiu's News*.

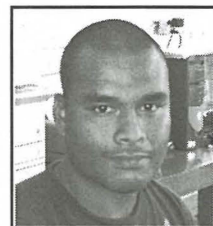
**Mesekiu's News**  
Palau Community College  
P.O. Box 9, Koror, Palau 96940

## Celebrating Birthdays

Mariano Wur	January	27
Epimachus Moses	January	28
Winfred Recheungel	January	28
Nino T. Pate	January	30
Felix Sengebaw	January	31
Rennetta Meyer	January	31

**Happy Birthday To You!**

## More Show Support to Endowment Fund



Rayvan Adelbai

Rayvan Adelbai of the Ministry of Resources and Development- Bureau of Land & Survey is the newest members of the Endowment Fund. PCC welcomes the new supporters of the Endowment Fund and invites others who have not signed up to show their support as well. The College also thanks Tudong for his continued support and encourages others who may want to help more. For more information about the PCC Endowment Fund, please contact Hulda, Dilubch, or Koyungil at the Development office at 488- 2470 ext. 253.

## Softball Registration Deadline Today!

There will be an Intramural Co-Ed Softball Tournament that will begin on February 04, 2008. Interested students may register their teams at Recreation office. Deadline to register your team will be on January 25<sup>th</sup> at 4:30 p.m. A team will compose of at least 7 males and 3 females. Games will be held on Mondays, Wednesdays, and Fridays at Meyuns Ballfield beginning at 7:00 p.m. Cash prizes will be provided to the top-

## Job Opportunities Available at PCC

**Position:** Career Counselor

**Salary:** \$17,317 to \$19,479 per annum (Depending on qualifications)

**Position:** Math Instructor

**Salary:** \$16,010 to \$21,068 per annum (Depending on qualifications)

**Position:** Science Instructor

**Salary:** \$16,010 to \$18,730 per annum (Depending on qualifications)

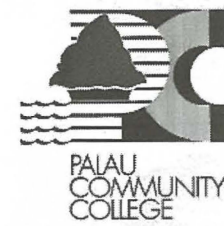
### General Information:

Application forms can be obtained from Human Resources Division at the P.O. Box 9, Koror, Palau 96940 or at our website: [www.palau.edu](http://www.palau.edu). Send completed application with transcripts, resume, and verification of previous employment (s), if any, to same address. For further information about job qualification requirements, examples of duties, etc., please call the Human Resources Division at (680) 488-2470/ 2471, extension 227 or come in and see us.

**PCC IS AN EQUAL OPPORTUNITY ACTION EMPLOYER**

three finishers. For more information, please call Recreation office at 488-3885/ 3074.

2008 Shell NBL Division II Schedule						
RND	Date	Time	Venue	Home Team	vs.	Away Team
1	28/1/2008	9pm	Palau National Gym (PNG)	PCC Mesekiu	vs.	On Fire
2	2/2/2008	6pm	PNG	PCC Mesekiu	vs.	PPR
3	7/2/2008	9pm	PNG	PCC Mesekiu	vs.	Stingers
4	12/2/2008	9pm	PNG	PCC Mesekiu	vs.	Ngjwal Central
5	19/2/08	6pm	PNG	PCC Mesekiu	vs.	Airwaves
6	23/2/08	7:30pm	PNG	Bullets	vs.	PCC Mesekiu
7	5/3/2008	9pm	PNG	Rough Riders	vs.	PCC Mesekiu
8	8/2/2008	6pm	PNG	Shell Helix	vs.	PCC Mesekiu
9	10/2/2008	9pm	PNG	Kleboki	vs.	PCC Mesekiu
10	20/3/08	7:30pm	PNG	Kabong	vs.	PCC Mesekiu
11	22/3/08	6pm	PNG	Airai Aces	vs.	PCC Mesekiu
12	26/3/08	7:30pm	PNG	Ngjwal 79ers	vs.	PCC Mesekiu
13	29/3/08	7:30pm	PNG	Mesang	vs.	PCC Mesekiu
14	2/4/2008	9pm	PNG	PCC Mesekiu	vs.	Blue Shark
15	7/4/2008	7:30pm	PNG	PCC Mesekiu	vs.	Sami's Sharks



# Palau Community College

FREE COPY

# MESEKIU'S NEWS



Friday, January 25, 2008

Weekly Newsletter

Volume 10, Issue 4

## Federal Pell Grant Increases to \$4731

The Federal PELL GRANT maximum award increased from \$4310 to \$4731 for School Year 2008-2009. Each student can receive this annual award provided he/she enrolls full-time, with a cost of attendance of \$4731 or more and have an expected family contribution (EFC) of zero (0). For more information, contact the Director of Admissions & Financial Aid, Dahlia M. Katosang at the PCC Office of Admissions & Financial Aid.

### Bits and Pieces from the Office of Admissions & Financial Aid:

- Director Katosang, conducted the 2007 Financial Aid workshop for the counselors and senior advisors from all high schools in Palau including the PCC counselors from Upward Bound, Talent Search, and UBMS programs on December 20, 2007. A special "thank you" goes to all high school principals and the college directors for allowing their staff to participate in the workshop. The

workshop agenda included an in-depth reviews of the enhancements that were made to the 2008-2009 application processing for the upcoming school year including changes to the paper Free Application for Federal Student Aid (FAFSA), FAFSA on the web, and the Student Aid Report.

- Financial Aid Nights sessions will be conducted during the first week of February 2008. Director Katosang and her staff from the Office of Admissions & Financial Aid will visit high school seniors and their parents to discuss financial aid programs and requirements. They will also assist interested student to apply for financial aid to help pay for college cost by filing Free Application for Federal Student Aid (FAFSA). These sessions will be held at each high school in the evenings from 7 to 9pm.

*(Continued on page 2)*

## Local Businessman Donates Books



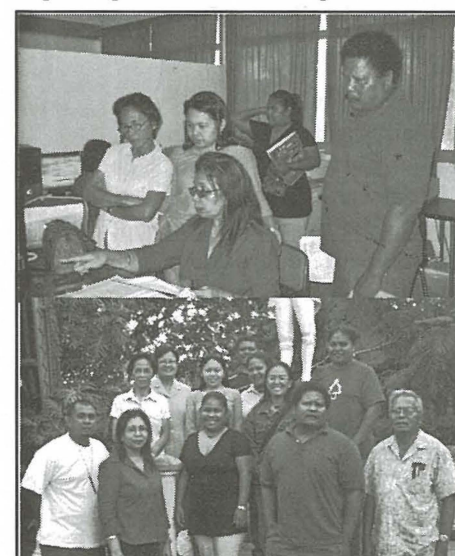
Soon Seob Ha (2nd from right), President and General Manager of Hanpa Industrial Development Corporation (HANPA), donated various books to PCC. Present to receive the donations were Executive Assistant to the President Todd Ngiramengior (r), Director Laura Mangham (2nd from left), and Dean Willy Wally.

The College thanks Soon Seob Ha for donating books to PCC. Mr. Ha and HANPA, with the support of MV Hannah missionaries and the Palau-Korean Presbyterian Church, donated stacks of books to the College on Tuesday. Mr. Ha will also donate to other schools and libraries in Palau. If you are interested, please contact him or Ms. Joy at 488-2777.

## \$19K Raised for PICRC Gala & Fundraiser



Palau International Coral Reef Center (PICRC) Board Members accept Shell Palau's \$12,000 donation from Frank Kyota (c) during the center's 7th Anniversary Gala & Fundraising held last week Friday at the Palau Pacific Resort. Numerous government officials, members of the diplomatic corps, corporate partners, and private agencies attended the fundraiser. ROP President Remengesau was the keynote speaker as PCC President Patrick U. Tellei who is also the PICRC Chairman of the Board, delivered the opening remarks. PICRC netted a total of \$19,000 through their softball tournament, in-kind donations, and tickets.



Counselors and senior advisors attended the Financial Aid workshop conducted by Director Dahlia Katosang of the Office of Admissions & Financial Aid.

(Continued from page 1)

DATE (February 2008)	HIGH SCHOOLS	# of Seniors	Time	PLACE
04 - Monday	PHS	129	7:00 - 9:00pm	PHS Resource Center
05 - Tuesday				
06 - Wednesday				
07 - Thursday				
08 - Friday	Mindszenty (MHS)	50	7:00 - 9:00pm	MHS Cafeteria
09 - Saturday	Bethania (BHS)	20	9:00 - 11:00am	EHS Cafeteria
	Emmaus (EHS)	17		
	Belau Modekngel BMS)	9		
11 - Monday	Palau Mission Acad. (PMA)	31	7:00 - 9:00pm	PCC CE Training Room

PCC recruitment activities will begin during the second week of February 2008. The college representatives will visit all high schools in Palau and to discuss college programs and services and recruit students who are interested

in attending Palau Community College this coming school year. The recruitment team will be composed of Dean of Students, Marensia Edward, Associate Dean of Engineering, Sherman Daniel and Director Dahlia M. Katosang.

DATE (February 2008)	HIGH SCHOOLS	# of Seniors	TIME	PLACE
12 - Tuesday	Palau High (PHS)	129	9:30 - 11:30am	PCC Cafeteria
12 - Tuesday	Palau Mission Acad. (PMA)	31	1:00 - 3:00pm	SDA Classroom
14 - Thursday	Belau Modekngel (BMS)	9	8:45 - 10:45am	BMS Classroom
14 - Thursday	Bethania (BHS)	20	1:00 - 3:00pm	BHS Classroom
15 - Friday	Emmaus (EHS)	17	8:45 - 10:45am	EHS Classroom
15 - Friday	Mindszenty High Sch. (MHS)	50	1:15 - 3:15pm	MHS Cafeteria
Total Seniors		256		

• Committee on Student Financial Aid (COSFA) was created by the PCC President, Dr. Patrick U. Tellei on January 17, 2008. Some of the duties and responsibilities of the committee includes following:

- To serve as an Appeal Board for students who appeal decisions of the Office of Admissions & Financial Aid.
- To review and recommend institutional policies in order to be in compliance with administration of federal student financial aid programs.

~ Committee members include the following:

- \* Vice President of Administration & Finance, Vice chairperson
- \* Dean of Academic Affairs or Associate Dean of Engineering
- \* Dean of Students, Chairperson
- \* President of Faculty Senate Association
- \* Registrar
- \* English Department Chairperson
- \* President of the Associated Students of PCC (ASPCC)
- \* Director of Admissions & Financial Aid, Ex-Officio member

## Bells New PCC FSA Secretary

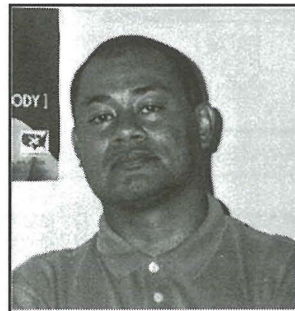


New PCC Faculty Senate Association (FSA) Secretary, Samantha Bells (seated center), with the rest of the FSA members.

In a special election yesterday, Samantha Bells, a Criminal Justice instructor, was unanimously elected as the new PCC Faculty Senate Association secretary to replace outgoing secretary, Karen Miovas. Other officers include, Wilma Sukrad- President; Vicky Maui-Vice President; and Soledad Garcia-Treasurer. Congratulations Samantha!

For more information about the PCC FSA and their activities, please contact Wilma Sukrad at 488-2470/2471 ext. 259.

## Chilton in Last Semester at UH Manoa



Tutii-Elbuchel Chilton, Assistant Professor of Social Science

Tutii-Elbuchel Chilton also known as "Joe" took a year sabbatical to pursue his Ph.D. at the University of Hawaii-Manoa. He is currently in his last semester and has been doing great, achieving exemplary grades.

Chilton will be resuming his position at the College once he finishes school. The agreement between the College and Chilton will also enable him to write his dissertation while he teaches.

The College is very proud of you Joe and wish you all the best!

## Marshall Islands Journal Reporter Meets with Marshallese Students

Karen Earnshaw, a reporter for the Marshall Islands Journal, and her husband, Cary Evants, met with the PCC Marshall Islands Student Organization on Wednesday to ask about their experience studying at PCC and living in Palau compared to their home country, the Republic of the Marshall Islands.

Earnshaw and Evants were very impressed and commended the College's efforts in helping the students achieve their goals. Publication of Earnshaw's article about the Marshallese students at PCC will be available once it has been published.

## BITS AND PIECES...

### ANNOUNCEMENT

### CE Offers Mandarin Courses...

The Continuing Education (CE) office is now offering FREE Basic I and II Mandarin classes. Basic Mandarin I will be on Mondays and Wednesdays beginning on January 28<sup>th</sup> from 6:00 p.m. to 8:00 p.m. at Continuing Education (CE) Training room. Basic Mandarin II classes will be on Tuesdays and Thursdays beginning on January 29<sup>th</sup> from 6:00 p.m. to 8:00 p.m. at CE training room. To register or for more information, please do not hesitate to contact Taruu Nakamura or Leona Blaluk at 488-6223.

### THANKS

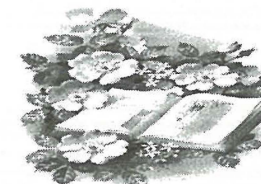
### Message of Appreciation...

I would like to extend my sincerest appreciation and heartfelt gratitude to all the PCC staff. Your support, generosity, and kindness during this time of sorrow will not be forgotten.

Virginia "Hinia" Ikeya

### CONDOLENCES

### Our Condolences



The College family expresses its deepest condolences to College employee, Norma A. Etibek on the untimely loss of her beloved brother, Aiichi Jr., Adelbai.

Our thoughts and prayers are with you and your family during your most difficult time of sorrow and grief.

## Succeeding in College- Part 1

Taken from Study Tips.com at www.how-to-study.com

Just as in elementary school through high school, your success in college requires high motivation and effort, strong study skills, effective time management, and good test-taking strategies. These areas are covered in other screens here at www.how-to-study.com. But college success requires much more. Once you move from high school to college, you will generally find that students are more motivated and competent than in high school; teachers are more demanding; the work is more difficult; and students are expected to be independent. Further, if you are living away from home for the first time, you will have many new experiences. Here are some ideas that will help you succeed in college:

### Have Clear Goals

College success requires commitment and a lot of hard work. You must be very certain about the importance of a college education.

- Be clear about why you are going to college.
- Establish specific goals you wish to accomplish.
- Know what it will take to reach these goals.
- Be certain your goals are consistent with your interests and abilities.
- Be flexible - change your goals if needed based on your experience as you progress through college.

### Get Financial Aid if Needed

College is expensive. Even if you attend a public college or university and live at home, you still must pay for tuition, fees, and books. There are many sources of financial aid that can help you meet the high costs of college. Become aware of and pursue these sources.

- Consider all possible sources of financial aid in addition to your college's financial aid office.
- Meet all deadlines for submitting applications and documentation.
- Respond quickly and completely to all requests for additional information.
- Be persistent in following up your application.
- If you do receive financial aid, meet all requirements to keep and continue your aid.

### Manage Your Money

There are many ways to spend money in the college setting for other than education purposes. Take steps to ensure that you do not waste the money set aside for your college education.

- Set a budget and keep to it.
- Be careful about your use of credit cards. Don't overspend. Pay balances promptly to avoid high interest costs.
- Open a checking account and carefully monitor your balance.
- Keep your cell phone under control. Those minutes and fees can really add up.

## PSO Meets FAA Members

By: Harter Hertin, Pohnpei Students Organization (PSO) Leader

Some of the Pohnpeian students at PCC were very fortunate to meet with the members of the Federal Aviation Administration (FAA) from Pohnpei for dinner at Sunset Park on Wednesday evening. The Pohnpeian Students



PSO members with the Pohnpeian FAA members at the dinner reception.

were very happy to meet with them. We would like to thank Master Halbert for the special gathering and the other Pohnpeian members, Erimy Alex; Takiko Ifamilik; Layne Peter; Melson Darra; Ieskek Iehsi; and Lynn Barbosa for meeting with us.