

Alumni Notes

Class of 2001 (PCC)

Muriell Sinsak



2001 - Earned an AA Degree in Liberal Arts. Worked at Social Security Office for three months then transferred to Ministry of Finance - Budget & Planning. Now on educational leave to complete her BBA in Finance and Economics. Encour-

ages students to continue school. One's life can definitely improve with an education.

Class of 2008 (PCC)

Elchesel Wilfred



2008 - Earned an AA degree in Liberal Arts. Worked at Belau Medical Clinic. Now attending UOG completing her BS in Sociology. Future plans include continuing at UOG to complete a master's degree.

Class of 2010 (PCC)

John Takisang



2010 - Earned an AS degree in Education - Elementary Education. Did his internship at G.B. Harris Elementary School, and upon completion of his degree, he was hired as a full time teacher.

Alumni Notes showcases MOC & PCC alumni who are positive role models and contribute to the quality of life in their local communities. If you are that alumnus/alumna or know someone who is, please contact the PCC Development Office at telephone number 488-2471. We would like to feature you in future issues of the *Mesekiu's News*.

Mesekiu's News
Palau Community College
P.O. Box 9, Koror, Palau 96940

Celebrating Birthdays

Derbei Meyer JAN 31
Felix Sengebau JAN 31
Benny Brel FEB 01
Vernice Yuzi FEB 02

Happy Birthday To You!

MESEKIU Basketball Corner

Mesekiu Basketball Team challenged the Ranchers on Jan. 24, 2011. They completed the game with a score of 91 Mesekiu to 74 Ranchers. Top scorers for the game were - Amando Fichmai (17pts), Nena Tulensru-TC (14pts), Eric Defan (13pts), Pius Tamguyad and Alvin Deffinew with 9pts each. The team would like to thank the cheerleaders and fans, especially the dorm residents who made some noise that evening. Your support was motivational! Coach Hamilton wishes to encourage all staff and students to come out to the games if you can make it.

The following is the official schedule :

Jan. 12 Ikelauans vs. Mesekiu (52 - 45)
Jan. 17 Mesekiu vs. Meyuns RS (51- 89)
Jan. 24 Ranchers vs. Mesekiu (74 - 91)
Jan. 27 Mesekiu vs. Shark Attack
Feb. 1 Meda Boyz vs. Mesekiu
Feb. 7 Mesekiu vs. Cardinals
Feb. 11 BOG vs. Mesekiu
Feb. 17 Mesekiu vs. Surangel Kings
Mar. 3 Mesekiu vs. Idid 4 Wheelers
Mar. 8 Stingers vs. Mesekiu

Come one, come all!! Let's cheer for our boys on the PCC Mesekiu Basketball team. For updates on game scheduling and time, please contact Hamilton Maech at 488-3886 or PNOC at 488-6562

DONORS
WE CAN HELP YOU
PROCESS YOUR REFUND
APPLICATIONS.

Fill the form and bring your last payday's check stub for 2010 to the Development Office.
Call 488-2470 ext. 253, 252, 251

PALAU BEACH BUNGALOW
Peace & Relaxation Palauan Style!
Only \$40+tax daily rate
Private a/c bedroom&bath, living room, kitchenette
Beachside on big island of Babeldaob
Melekeok State
30 minutes from Palau International Airport
RESERVATIONS: 680.587.2533
Swim, snorkel, jungle walks, cultural sites
palaubeachbungalows@palaunet.com
www.palauparadise.com

CO-ED Intramural Softball Tournament

There will be a CO - ED Intramural Tournament for Softball this Spring 2011. The Recreation Office is asking all those who are interested in joining to submit their team roster to Hamilton or Recreation Staff no later than Feb. 03, 2011.

If you have any questions, you may contact Hamilton or Norman at 488-3885.

LET'S SEE THOSE TEAM SPIRITS!!!
SIGN UP TODAY!!

Day Care cont'd

to RipTide to spend the morning at the beach. It's a favorite of the children, as it is an area safe for them to swim and have a great time!

The teachers and parents would like to extend their heartfelt gratitude to Ms. Dixie Tmetuchl for having donated RipTide beach to the Day Care Center free of charge each time they have a trip there.

BASIC RESIDENTIAL APPRAISAL PROCEDURES

The Office of Continuing Education would like to inform the public that the second course for Basic Residential Appraisal Procedures will begin Feb. 1-4 (Tue-Fri), 8:00am - 5:00pm at CE Training Room. Fee is \$125.00 per person. For more information, contact Annalisa or Leona at CE Office number 488-2471 ext. 237/243 or 488-6223/2659.

**PCC CAN HELP YOU
UPGRADE YOUR SKILLS TO
BOOST YOUR CAREER!
COME TO PCC!
Call 488-2470**

Vacancy Announcement

- (1) Computer Technician, Computer Services Office
Salary range: \$12,049 - 20,607 per annum
- (2) Director, Human Resources Office
Salary range: \$18,730 - 28,833 per annum
- (3) Director, Finance
Salary range: \$18,730 - 28,833 per annum

For application forms and information, please contact Karen Mobel at PCC Human Resources Office at 488-2470/71, ext. 227.

PCC is an Equal Opportunity Employer

FREE!!!



Palau Community College

MESEKIU'S NEWS



Friday, January 28, 2011

Weekly Newsletter

Volume 13, Issue 4

President Johnson Toribiong Speaks on the Separation of Palau



His Excellency President Johnson Toribiong presented the first of the series on lectures about the history and political development of

Palau on January 20, 2011. Before speaking on "The Separation of Palau," President Toribiong presented a signed Joint Declaration that he and President Porfirio Lobo Sosa of Honduras signed together declaring the waters of both countries as Shark Sanctuary, signed on Sept. 22, 2010 in New York, NY.

President Toribiong began his talk about the big debate on whether Palau was to separate from or join Micronesia. In 1978, Palau voted to become a separate sovereign state. From there on, he gave the history of how Palau was able to work through many obstacles to reach its status of being a Republic.

There will be more of these lectures upcoming. For information of when the next lectures will be, please contact Office of Continuing Education at 488-6223 or President's Press Secretary Fermin Meriang at 775-2601.

Students who were not able to attend the first lecture are encouraged to also contact President's Press Secretary Fermin Meriang at 775-2601 to request for copies of the lecture.



Presenting the signed declaration to PCC. L-R: Trustee Emesiochl, President Tellei, Student Trustee Ueda, President Toribiong.

Governing Board Reviews Follow-Up Report

On January 20, the Board of Trustees met to review the college's 2011 Follow-Up Report. The Board was not able to complete the review of the 50 page draft report; therefore it reconvened on Tuesday, January 25 to complete its review. Participating in the review were Chairperson Bilung Gloria G. Salii, Vice Chair Masa-Aki N. Emesiochl, Secretary/Treasurer First Lady Valeria Toribiong, Trustee Buk Emil Ramarui, and Student Trustee Michelle Ueda.

Dr. Tellei who led the review, began by explaining the process utilized by the college in the development of the responses to the visiting team's three recommendations.

The process includes reviews by the Executive Committee and the Board of Trustees. The first-draft reviews will be followed by two more before the board's final review and approval prior to submission to the Accrediting Commission for Community and Junior Colleges. In order to appropriately and adequately respond to recommendations, a matrix is being used to identify and



BOT meeting

Palau Community College is an accessible public educational institution helping to meet the technical, academic, cultural, social, and economic needs of students and communities by promoting learning opportunities and developing personal excellence.

Registration Completed for Spring 2011

Registration for Spring 2011 ended on January 21, 2011. Those who registered to attend Spring Semester totaled 657 students. There was an increase in numbers for returning students with 71 students coming back to continue their education. These are students who return back to school after a number of years of absences.

The Registrar's Office would like to remind students that some report cards for previous semesters are still at the Registrar's Office for pick up. If you have not done so, please pick up your report card for previous semesters. The Registrar's Office is now issuing certification letters for Spring 2011 also, should you require one.

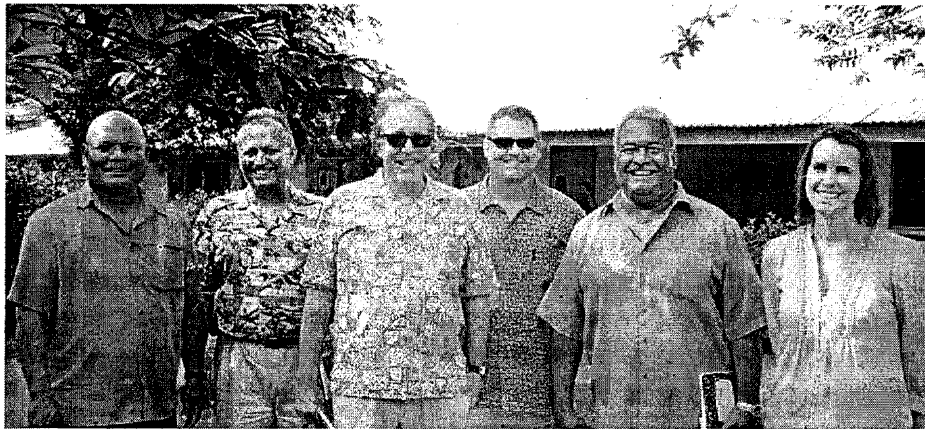
For Student ID Cards, please bring your class schedule for Spring 2011 and head over to the Dean of Student's Office to process your ID card. The following times are scheduled slots for ID issuance:

M-F 9:00am - 11:00am
M-F 1:00pm - 3:00pm

EDUCATION OPPORTUNITY
URM in the Biological Sciences
Apply for Summer 2011 to study and learn hands on in Hawaii.
Application: <http://www5.pbrc.hawaii.edu/urm/app/>
Deadline: **Feb. 28, 2011**
See Science instructors if you have questions

Texas A&M University Corpus Christi Meet With PCC President

Texas A & M University Corpus Christi representatives paid a return visit to the college, to advance the ongoing effort in establishing collaboration and arrangements for research and articulation between Texas A & M and PCC for the Marine/Environmental Science Program and the Fisheries. Work is now being done in developing the required documents for review and endorsement. The team consisting of Frank Pezold, Joe Fox, Greg Stunz and Jennifer Pollack, also met with Dean Timarong and science instructor Vernice Yuzy, to discuss programs available to students who are in the Marine/Environmental Science Program. The LSAMP grant that has been available for PCC students to apply and do their studying in Hawaii is also available at Texas A & M. Although the LSAMP grant is the same grant as the one offered through University of Hawaii, they have different activities for students to do. With the ES majors participating in the program, they can check out Texas A & M campus and transfer over easily should they wish to continue at a four year college.



L-R: VP Taro, Dean Pezold, Dr. Fox, Professor Stunz, President Tellei, Dr. Pollack.

BOT Cont'd

state all the findings that led to recommendations, develop and record responses to the findings, and identify required evidences. The template also helps guide the reviews both at the management and governance level.

Student Support Services Becomes Learning Resource Center

This spring 2011 semester, the Student Support Services Program officially became the Learning Resource Center (LRC). The counseling component has been transferred to the Office of Student Life, but the rest of the services continue under LRC. These services include instruction; tutoring; study & computer lab; placement testing; institutional TOEFL; and COMPASS (Ability to Benefit Test).

The center will also be responsible for coordinating the activities of the College Access Challenge Grant Program (CACGP). The CACGP is a federal program administered by the Ministry of Education. The purpose of CACGP is to help underrepresented students obtain a college education.

PCC is responsible for the CACGP activities that focus on both non-academic & academic support to ensure higher rates of college retention and graduation; and providing information to high school seniors & all incoming students regarding college programs & services, and available financial assistance. The non-academic & academic support is geared at engaging current and incoming PCC students so they can successfully complete and earn their college degrees. In addition, potential and incoming student are provided all the necessary information to make sound decisions regarding their choice of majors, services to access, and available financial assistance to help cover educational costs.

LRC cont'd pg. 3

PCC Internship Placement

Internship is a 4-credit training required of students to graduate. It requires a minimum of 192 contact hours for students to earn the 4 credits. This allows students the opportunity to experience the "real world of work" through supervised training with employers in private or public agencies. The students work as intern trainees for a semester. Students are treated like regular employees and are expected to abide by all the rules and regulations of the company. At the conclusion of the training, employers will evaluate student performances based on the learning outcomes and give appropriate letter grade.

Internship training benefits the student by providing him/her the opportunity to apply technical skills learned in the classroom into practical use while learning proper work attitudes and ethics to be a successful employee. It also benefits the employers as it provides them with new talents and a pool of potential employees. It is one of the more effective ways to recruit, train and hire potential employees.

The program has proven to be a success based on evaluations received from students and employers alike who had participated in the training. The college is very appreciative and grateful for the support of the following public and private agencies who are providing training stations for our students this semester:

Bureau of Environmental Health
Continental Airlines
Fish & Fins
Koror State Rangers
Melekau Insurance
Midtown Express Tire & Lube
MOH - Finance and Medical Record
NAPA Auto Parts
Palau National Communication Corp.
Palau Pacific Resort
Palau Public Utilities Corp.
PCC - CRE, Physical Plant Division,
Science Lab and Technology Div.
Public Works, National Gov.
Social Security Administration
SOCIO Micronesia.

THANK YOU!!

BITS AND PIECES...

ADULT HIGH SCHOOL PROGRAM

2011 Spring Semester

First day of class: January 31, 2011
Class Schedule: 9am - 7:30pm
Late Registration: Open 'til Feb. 4

Contact the following persons to register for the program.

Laura Mangham 488-0826
Hedrick Kual @ 488-2471 ext. 267
Debolyn Arurang @ 587-3511

TAN SIU LIN PCC LIBRARY

HOURS of Operation:

M - Th 8:00am - 8:00pm
Friday 8:00am - 6:00pm
Saturday 9:00am - 6:00pm
Sunday CLOSED

Thank you for your patronage. We are here to serve the students and the community.

APOLOGY

PCC Development Office inadvertently referred to Victor Yatilman as a graduate of 2009 with a Construction Technology (AAS) degree. He actually graduated in Summer 2006 with a General Electronics (AAS) degree. He recently was hired at AEROTEK as an electronic assembler and attending ITT Technical School of Electronics.

Online Computer Lab (Rm 60)

Lab is for all students who need to use a computer. Also a place to print coursework. Not connected to internet. Only for course related work. Lab Hours:

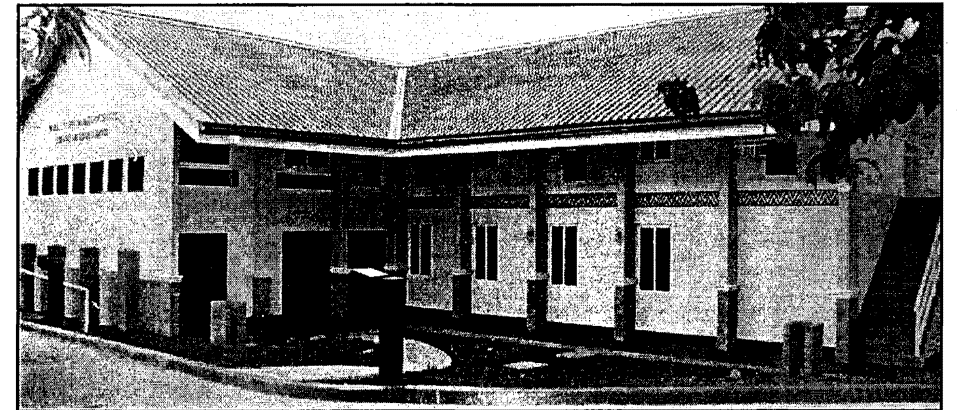
9:00am - Noon / 2:00pm - 8:00pm

Wanted

MESEKIU'S NEWS welcomes stories/articles/announcements from students, faculty, and staff. Submission deadline is Monday at 4:30 p.m. in hard and electronic copies to aduraa@palau.edu.

Please call ext. 252/253 if you intend to submit your article after Monday.

PTHSE Soft Opening Jan. 31, 2011



Palau Tourism & Hospitality School of Excellence (PTHSE)

A commercial kitchen, a restaurant, a bar, an alfresco area, a mock hotel suite, reception and concierge areas, and two classrooms. The first educational & training arena for PTHSE students to learn - to listen - to express - to experiment - to create - and to engage in numerous industry-based projects that support and enhance career growth. A collaborative effort between PCC, Belau Tourism Association, and the Ministry of Education.

LRC Con't

Although these student support services and activities have long been provided by the college, the grant is much welcomed as it will enable us to expand the existing services and activities to better meet the needs of our continuing and incoming students. The establishment of the LRC is in line with Goal 1.4 in the 15 Year Institutional Master Plan, "The College will ensure that Learning Support Services are sufficient to support instructional programs," specifically, objective 1.4.1 which calls for the establishment of a student learning center. The LRC will be an additional unit under the Student Services Division. This is a testament of PCC's commitment to its mission which is to promote learning opportunities and developing personal excellence. Although PCC has an open door policy, it realizes the value of providing educational support and is committed to providing such support to increase student success. PCC students are encouraged to access and utilize the LRC, and to work with the instructors and peer tutors to ensure a successful semester.

Republic of China Students Visit PCC President

Dr. Edwin Yang of National Taiwan Normal University brought students with him to tour PCC. They met with President Tellei to find ways in which to collaborate and establish programs where students from Taiwan can come to PCC to further their knowledge of Palau. They were interested in learning about the historical and cultural aspect of Palau.



Front: (l-r) Chen Tsai Hsin, Edwin Yang, Lin Li Ting, Huang Fei San, Dr. Tellei, Huang Lan Yen, Chen Wen Li, Sih Chen and baby Chen Guo. Back: (l-r) Chen Tse Min, David Chen

Day Care Corner

The Day Care Center has been going through some major changes. At the moment, it is going through the process of preparing another classroom to accommodate additional students. Under the agreement that established the Day Care, the college is responsible to provide adequate facilities to house the program that is designed to provide educational and learning opportunities for the children of PCC students as well as the parents. Children are admitted to the Day Care in the following priority order: children whose parents are enrolled at PCC; children from low income families; children of PCC staff and children from the community.

Every month, the children of the Day Care Center and their parents have a trip. Usually these trips are on Friday, where they go for an adventure with the teachers and staff. This Friday, the trip will be Day Care Cont'd pg. 4