

Alumni Notes

Class of 1998(PCC)

Froline Ann Bultedaob -



1998 PCC graduate with an Associate of Arts (AA) degree in Liberal Arts (LA). Bultedaob works as an Administrative Officer for the Bureau of Lands and Survey- Ministry of Development.

Resources

Class of 1996 (PCC)

Froly Ann Bultedaob -



1996 PCC graduate with a double major in Certificate of Achievement (CA) in Secretarial Science (SEC), and General Office Clerk (GOC). Bultedaob works as a Junior Auditor with the

Palau Public Auditor's Office.

(No need to rub your eyes, you're not seeing double. Froline(top) and Froly(above) are identical twins.)

Class of 1985 (MOC)

Ibuuch Ngirion -



1985 MOC graduate with a Certificate of Achievement (CA) in General Office Clerk (GOC). Ngirion is an Accountant with the Bureau of National Treasury- Ministry of Finance. She has been

with the Ministry for 23 years and her hard work over the years has earned her national praise and recognition, among which are Palau's Employee of the Quarter and Employee of the Year.

Alumni Notes showcases MOC&PCC alumni who contribute to the quality of life in their local community and are positive role models for other PCC students to emulate. If you are that alumni or know someone who is, please contact the PCC Development Office at telephone number 488-2471. We would like to feature you in future issues of the *Mesekiu's News*.

Mesekiu's News
Palau Community College
P.O. Box 9, Koror, Palau 96940

Celebrating Birthdays

Todd Ngiramengior	October 27
Umang Kesolei	October 28
Itwong Ngiraikelau	October 28

Happy Birthday To You!

Phase II of Real Estate Appraisal Training Set for November

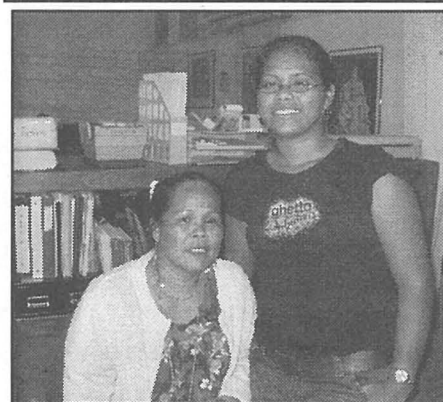
The Continuing Education (CE) office will offer the second phase of the Real Estate Appraisal training this coming November. The training will be held from November 10-15, 2008 at the CE training room every evening from 6:00 p.m to 8:00 p.m. Tutoring classes will also be held every morning from Monday, November 10 to Friday, November 14 for those who want to retake the test, which was administered back in March when the first phase of the Basic Principles of Real Estate Appraisal training was held.

Mark Gruber of the Micronesian Appraisal Associates based in Guam will again be conducting the training. Registration is open until the end of October 2008. For more information, please contact Taruu Nakamura or Dean Willy Wally at CE office at 488-6223.

Library Welcomes All

The PCC library welcomes all patrons to check-out its collection which includes various magazines, newspapers, fiction and non-fiction books, and helpful reference materials. Friendly library staff are always willing and eager to help you. Stop by and visit. We are open 7 days a week.

Mon.-Fri.	8:00 a.m. – 8:00 p.m.
Sat.	9:00 a.m. – 6:00 p.m.
Sun.	12:00 p.m. – 6:00 p.m.



Library Technician Pioria Asito and Library Aid Michelle Blesam are two of the handful of professional staff at the PCC library who help the hundreds who patronize the library daily.

2008 Women and Sport PALAU Walk-A-thon

When : Saturday, 25 October

Where: Palau National Track

Registration: 5:30 a.m.

Start Time: 6:00 a.m.

Route: start at Palau National Track to T-Dock (along the main road) and back.

T-Shirts will be given to the first 100 walkers to cross the finish line

Palau Community College FREE COPY



MESEKIU'S NEWS



Friday, October 24, 2008

Weekly Newsletter

Volume 10, Issue 43

Niigata College of Arts & Design President & Students Visit



PCC Dean of Students Marenia Edward (standing center-right) and ASPCC officers pose for a photo with Niigata College of Arts & Design (NCAD) President Kazuhito Kato (standing front-left) and NCAD students, after the groups's tour of the PCC campus.

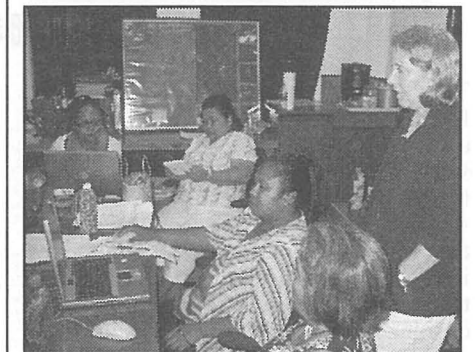
President Kazuhito Kato of Niigata College of Arts and Design (NCAD)-private Japanese college- and several NCAD students paid a visit to Palau Community College on Monday as part of their one week educational tour of Palau.

Kato and the NCAD students had the opportunity to meet with PCC officials Marenia Edward and Willy Wally, including the leadership of the Associated Students of Palau Community College (ASPCC). During their meeting, Edward and Wally briefed Kato and the Japanese students about PCC programs and services; they also talked about the friendly relationship

PCC enjoys with a number of colleges and universities in Japan. Wally said the PCC has in place agreements with several colleges and universities in Japan, in which student and staff exchange programs are possible, and he hopes that the same could happen in the future between PCC and NCAD.

Kato who has visited PCC before with other NCAD student group tours thanked Wally, Edward and the ASPCC officers for their hospitality, and said that even though there is no formal agreement between the two institutions, he is happy that such friendly visit are possible.

Business Office to Upgrade Software, Staff Undergo Training



Student Accounts supervisor Arlyn Ignacio (l), System Analyst Grace Alexander, Accounting Technicians Jackline Immanuel and Merelyn Omelau train on the new accounting software (Sage MIP Fund Accounting) under the watchful eye of trainer Elizabeth Holland of Holland Consulting International. *See Story Inside*

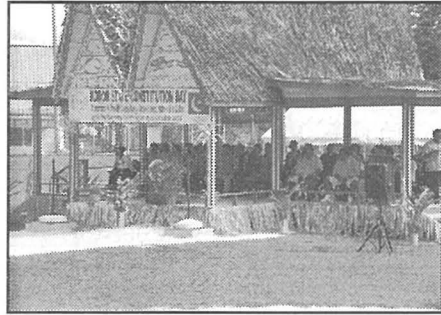


ASPCC officer Duet Toribiong exchange gifts with a student from the Niigata College of Arts & Design.

During his visit last year, President Kato donated Japanese books to the Palau Community College library.

Niigata College of Arts & Design is a private Japanese college with 24 campus/branches located mostly in Niigata Prefecture in central Honshu, Japan. Most graduates of the school go on to work in Japanese television companies and graphic design companies.

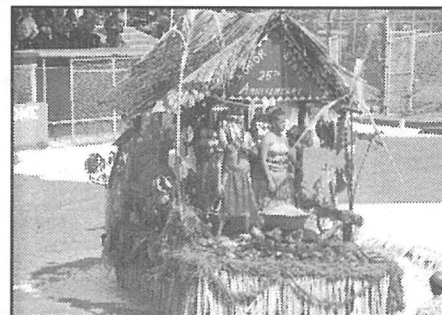
KSG Silver Anniversary Celebration in Photos



Main stage situated in the middle of Asahi Field seated the honored guests.



Leading the parade was the Ngermid hamlet float, the eastern-most village of Koror.

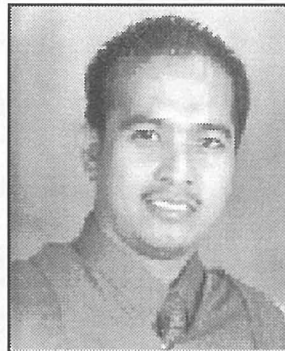


Ngerkesoal hamlet float.

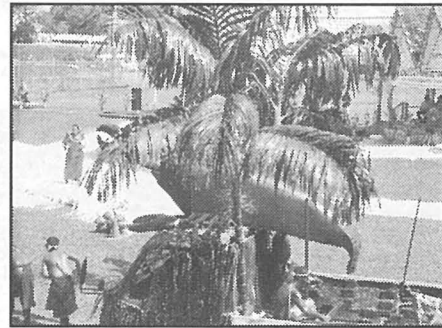
Development Office to Conduct Survey of PCC President

The Institutional Research of the Development Office will be conducting an in-house survey of PCC President starting October 27 and concluding on November 7, 2008. The purpose of the survey is to evaluate the performance of the President as part of the continuous improvement at the College called for in the self-study report. The survey is designed to assess the quality and outcome of the president's administrative performance within the context of the institution's vision, mission, and unifying principles. The evaluation process is intended to reflect the full scope of administrative duties expected of the president, and to provide meaningful, substantive feedback from key constituents, e.g., faculty and staff and members, regarding the president's efforts- his areas of strength as well as the areas that need improvement.

The Development office would like to thank in advance the faculty and staff who will be participating in the survey. Your cooperation counts! Should you need further information or clarification on the survey, please contact Niño "Onz" Pate at the Development Office at extension 251.



Niño Pate, Institutional Research Consultant



New Software for Business Office

The PCC Business Office staff are currently undergoing training on a new software which is said to make the business office even more efficient.

According to Business Office Supervisor Lori Joseph, the new software called Sage MIP Fund Accounting will enable business office personnel to cross-train in and master all areas within the Business Office, and therefore will be able to effectively carry out any task and duties from payroll to accounts payable/receivable. Joseph said that after the two week training, they will begin the actual transition from the old system to the

new one. The old system has been used for about 20 years.

Student Accounts Supervisor Arlynn Ignacio who is also training on the new software says that the new system seems easier to use. She says that the system's flexibility will allow her to learn other task areas in the Business Office, and as a result she can help her office colleagues provide better services to students and other staff of the college.

Elizabeth Holland of Holland Consulting International from Washington State is conducting the training for the Business Office staff. Holland says that the Sage

MIP Fund Accounting software she is bringing to PCC is successfully employed at other colleges in the region such as Northern Marianas College (NMC), College of Micronesia-FSM, and the College of the Marshall Islands (CMI). Local agencies such as Koror State Government, Palau International Coral Reef Center, and Palau Community Action Agency also use the Sage MIP Fund Accounting software.

Funding for the software training and implementation was provided by the US Department of Interior.

BITS AND PIECES...

WELCOME BACK

English Instructor Temaungil Back on Campus...

English instructor Marianne Temaungil returned this week after many months being away to attend to her elderly mother in New York, USA. While away, Temaungil said she was still able to carry her online courses in English, and credits the schools technological advances in distance education. Welcome back Marianne.

BE INFORMED

Palau Bar Association On Campus Again...

The Palau Bar Association will be on campus again next Wednesday to conduct another "Con-Con" Q&A forum, similar to the one they held two weeks ago. The forum aims to educate and inform voters about the 22 proposed amendments to the Palau Constitution which will be on the ballot in the upcoming general election in early November. The forum will be held at the PCC cafeteria and will begin at 7:00 pm. Students, staff, and the general public are invited.

SALE

Cheapest USBs on Island...

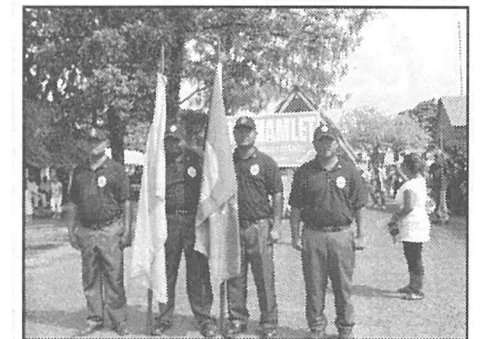
PCC Bookstore has the cheapest flash drives in Palau. (8GB - \$50; 4GB - \$20). Call PCC Bookstore at 488-2471, ext. 236. Hurry while supplies last.

Visit PCC website: www.palau.edu and learn all about Palau's only institution of higher learning. While there, check out the PCC weekly newsletter, *Mesekiu's News*, including back issues!

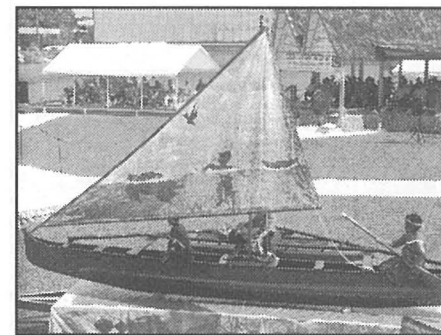
KSG Silver Anniversary Celebration in Photos



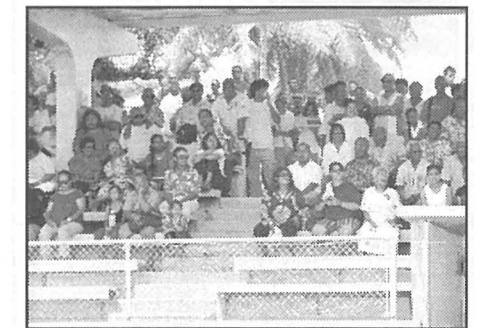
PCC Chairperson of the Board of Trustees Bilung Gloria G. Sali (c), the female counterpart of Koror Paramount Chief Ibedul Yutaka Gibbons enjoying the parade. (l-r) Senate President Surangel Whipps, Bilung, First Lady Debbie Remengesau and ROP President Remengesau.



Rangers leading the parade into Asahi Field.



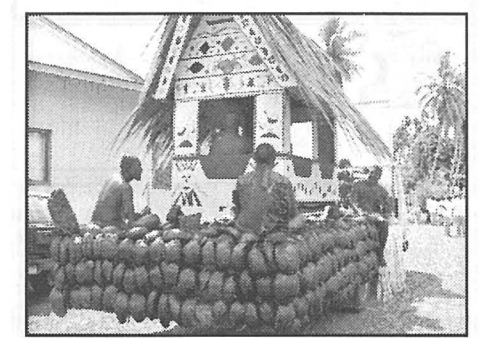
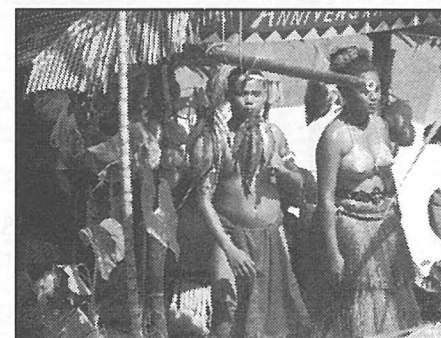
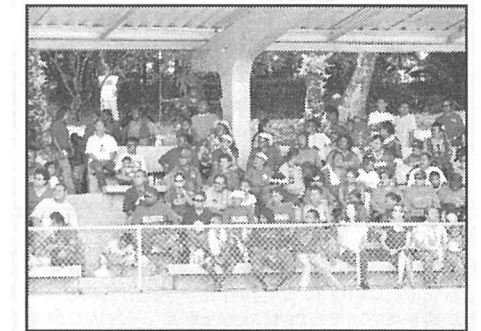
An outrigger canoe at full-mast moves past the grand stand.



Asahi stadium packed with spectators



Traditional palauan wear



Ngerbeched hamlet float