

ALUMNI NOTES

Class of 1995
Perry Hideos



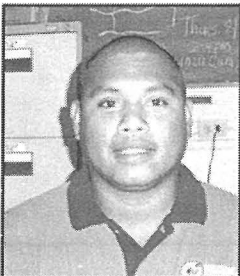
Eamed his Certificate of Achievement (CA) in Carpentry. He worked as a butcher at Surangel & Sons then at WCTC - Shopping Center. He then became a Gym Attendant for KSG. In 2003, he became a Construction Instructor at Palau High School until now. *Message: Education is the key to success!*

Class of 1996 & 1998
Belem Florentino



Eamed her Associate of Science (AS) degree in Business Education - Accounting and Certificate of Achievement (CA) degree in Secretarial Science. She worked at Melekeok Government Bank for almost 10 years and then in 2009 she was hired as a Teller at Palau Construction Bank, a position she is currently holding. *Message: Stay in school.*

Class of 1998
Galbraith Gabriel



Eamed his Certificate of Achievement (CA) degree in Business Education - Accounting. He worked at PALARIS as a GIS Technician, then transferred to PNCC where he is now a Plant Data Analyst, working with Network Services. *Message: Chase your goals and dreams without giving up! You'll be happier for sticking it out!*

Alumni Notes showcases MOC & PCC alumni who are positive role models and contribute to the quality of life in their local communities. If you are that alumnus/alumna or know someone who is, please contact the PCC Development Office at telephone number 488-2471. We would like to feature you in future issues of the *Mesekiu's News*.

Mesekiu's News
Palau Community College
P.O. Box 9, Koror, Palau 96940

Celebrating Birthdays

Zafar Arisan	Nov 12
Hulda Lukas	Nov 13
Leilanie Rechelluul	Nov 13
Vernice Rechebei	Nov 14
Pauline Jerry	Nov 16
Alvina Marcil	Nov 16

Happy Birthday To You!

Review cont'd from p.1

which is tasked with facilitating the development of the report, is reviewing the first draft of the report. The review of the first draft was held on November 01 and November 05, 2012. ASC will hold its 2nd re-

view of the report at the end of the month, and provide comments to the sub committees for the third and final draft. The final draft will then be subject for review and approval by the President and the Board.

REMINDER

2012 Annual Report covering Fiscal Period Oct. 2011 - Sept. 2012 is due at Development Office on or before January 11, 2013.

Message of Appreciation

Ngak el Petrus Itelmong a kmal oureng a suli a rechad ra PCC ra ikel ngeuseu el mlar kemiu el mer ngak ra kemeldillel a chochedak ra Esther Itelmong. A Rubak lolemolem el lobengked el rokui e de ngar a keltalreng er tial meringel el belulchad. Ko kmal mesaul.

It's Just Around The Corner!
Thanksgiving Endowment Fundraiser

NOVEMBER 21, 2012

Purchase tickets for a chance to win fabulous prizes and support the PCC Endowment Fundraiser!

Purchase \$50.00 or more for tickets and receive the PCC book: *"Many Voices, One Dream: From Mokko to Palau Community College"*

Contact Development Office at 488-2470/2471 ext 251, 252, 253 for information. Donations are tax deductible.

Vacancy Announcement

- (1) English Instructor, Learning Resource Center
Salary range: \$14,802 - \$24,647 per annum
- (2) Math Instructor, Learning Resource Center
Salary range: \$14,802 - \$24,647 per annum
- (3) Librarian
Salary range: \$16,010 - \$24,647 per annum

Vacancy Announcement

- (4) Associate Professor, Business Accounting
Salary range: \$18,009 - \$27,725 per annum
- For application forms and information, please contact Harline Haruo at PCC Human Resources Office at 488-2470/71, ext. 227, email hr@palau.edu or download form at www.palau.edu

JOIN THE ENDOWMENT FUND TODAY!

Invest in the future of Our Students, Our College, and Our nation
To support, contact us today!

P.O. BOX 9 Koror, PW 96940
Phone: (680) 488-2470/2471 ext. 251/253
Email: tellei@palau.edu
Website: www.palau.edu

PALAU BEACH BUNGALOWS
Peace & Relaxation Palauan Style!

Only \$40+tax daily rate
Private a/c bedroom&bath, living room, kitchenette
Beachside on big island of Babeldaob
Melekeok State
30 minutes from Palau International Airport
RESERVATIONS: 680.587.2533
Swim, snorkel, jungle walks, cultural sites
palaubeachbungalows@palaunet.com
www.palauparadise.com

FREE!!! Palau Community College



MESEKIU'S NEWS

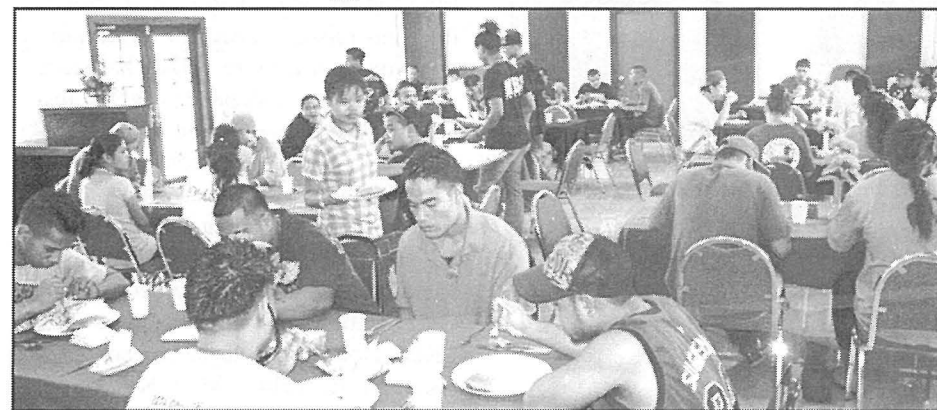


Friday, November 09, 2012

Weekly Newsletter

Volume 14, Issue 45

TH Students Provide Dining Experience at PTHSE



Dorm residents eating lunch at the PTHSE Restaurant with service provided by Tourism program students.

Tourism major students enrolled in TH 201 - Dining Room Operations class have been learning about dining room operations and etiquette throughout this semester. The

nine students in the class were given the opportunity to showcase their knowledge and skills as they provided fine dining service.

Dining cont'd on p.2

Steering Committee Reviews Accreditation Report



L-R: Dir. Tadao, Dir. Marcil, Exec. Assistant Ngiramengior, VP Olegeriil, Dean Chilton, Dean Daniel, Instructor Yaoch, CSO Rep. Ngirkelau, AALO Temaungil and ALO Olikong.

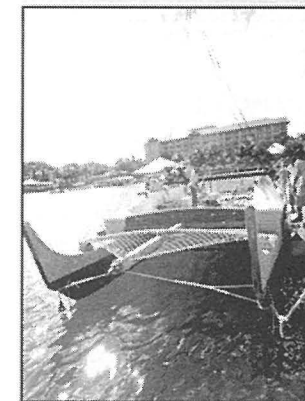
With the Mid-Term Focus Report due to the Accreditation Commission soon, the

Accreditation Steering Committee (ASC)

Review cont'd on p.4

Palau Community College is an accessible public educational institution helping to meet the technical, academic, cultural, social, and economic needs of the students and communities by promoting learning opportunities and developing personal excellence.

Alingano Maisu Readies For Voyage



Alingano Maisu.

The sailing vessel Alingano Maisu was on dry dock at NECO Marine Dock for repairs. On Friday, November 2, 2012, it was lowered into the

waters to prepare for a test run. Alingano Maisu is used in the sailing portion of the Non-Instrument Navigation Courses in which students and the instructor use the stars to navigate. The crew consisting of Miano Sowraenpi, Kurt Ngiraked, Norman Tewalmi and Sebastian Malurech under the guidance of Master Navigator Sesarrio Sewralur left Palau on the Alingano Maisu for a test run to Yap to make sure the vessel is sea worthy.

The Micronesian Voyaging Society, in partnership with PCC provides the opportunity to interested individuals to learn traditional navigation skills. Contact 488-2470/2471 for more information.

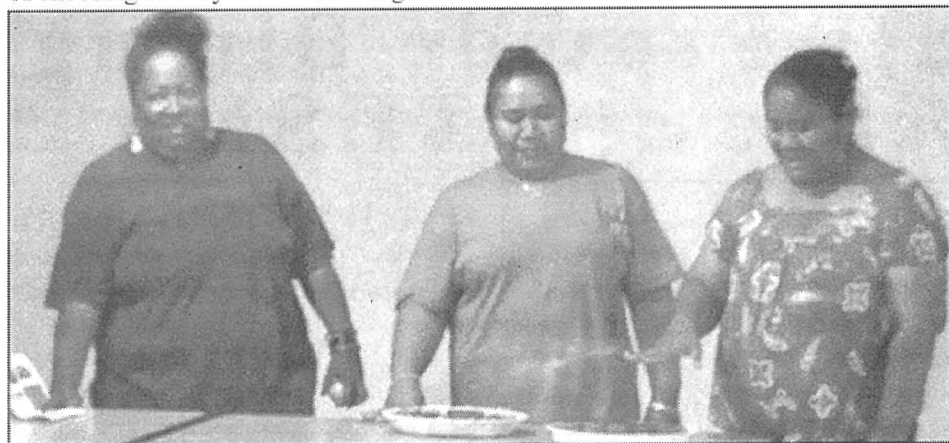
EFNEP Program In Ngarchelong State

Contributed by Dalton Thomas

From October 22 - 30, 2012, the EFNEP program conducted classes at Ngarchelong Head Start. The Food Nutrition and Food Technology classes targeted the parents of the Head Start students. The purpose of the program was to teach the parents how to prepare healthy foods for their children, and to promote the concept of choosing healthy foods and using more

local foods. The class covered all 5 main objectives of the program in My Pyramid which are the importance of fruits and vegetables, menu planning/creating shopping list, reading & understanding food labels and the importance of exercise. All the objectives were met during the sessions and parents were excited to

EFNEP cont'd on p.3

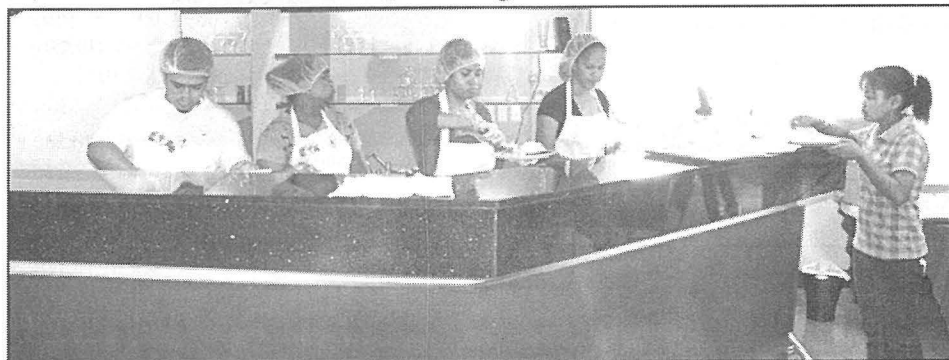


Parents/students presenting the dishes they learned to create during the graduation ceremony.

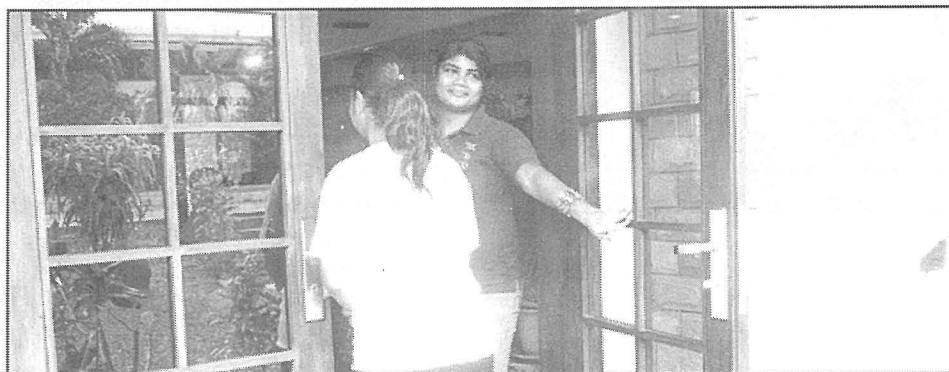
Dining cont'd from p.1

vices to the dorm residents on October 25, 2012. The dorm residents walked to the PTHSE Restaurant where TH students seated, waited and served them beverages and

lunch provided by the Cafeteria. Students enjoyed the dining experience provided by the TH students under the supervision and guidance of Instructor Soledad Garcia.



L-R: TH students Harson Mecholl, Chrisalen Isamu, Ember Nakamura, Whitney Mad and Geena Gerald.



Hostess Emerlyan Kazuma (TH student) welcoming the guests.

BCC Compete in 13th Annual Micro Cup

Contributed by Elsei Tellei

The Belau Canoe Club (BCC) was the team Palau sent to compete in the 13th annual Micro Cup held in Saipan from 26th - 28th of October, 2012. The Micro Cup started in Guam in 1999 and rotates throughout Saipan, Guam and Palau with other countries participating including Hong Kong, Australia, Japan and Hawaii. The canoe club consists of students all over Palau. To support our trip to attend the Micro Cup in Saipan, the club raised money by doing *chumong* or work for hire, selling barbecue at the OBF and Independence Day festivities, and through the generous donations of Senator Regis Akitaya, Senator Joel Toribiong, President Johnson Toribiong, Vice President Kerai Mariur, Sandra Sumang Pierantozzi, Minister Victor Yano, Blue Bay Petroleum, A&A Gas Station, Yo-Jiro Automotives, EKEI, House of Delegates, Canoe Association of Palau, Mari Kishigawa, Scott & Sasha Walsh, Pacific Trading Company, Jason Tarkong and Olympia Manibusan. As we arrived on Saipan, we were treated to the local's hospitality and enjoyed the island immensely. As the defending champions of the Micro Cup, we were able to win again trophies for the Mix 1500 meters and Mix 500 meters. We are extremely proud that all our hard work, both physically and financially, paid off and the experience taught us the values of hard work, team work, patience, perseverance, and determination. We will continue to compete in local, regional and national competitions and invite anyone interested in paddling to come paddle with us.

More information of PCC online



www.palau.edu



Palau Community College - PCC

BITS AND PIECES...

Tan Siu Lin PCC Library

Hours of Operation:

Monday to Thursday: 8am - 8pm
Friday: 8am - 5pm
Saturday: 9am - 6pm
Sunday: CLOSED

For information call 488-3540.

Important Dates To Remember!

Nov. 21	Annual Endowment Fundraising Event
Nov. 22	Holiday - Thanksgiving
Nov. 22-23	Thanksgiving Break
Nov. 30	Last Day of Instructions
Dec. 4-6	Final Exam Period

Advertisement

NEW BOOK
Many Voices, One Dream
From Mokko to Palau Community College
By Floyd Takeuchi

Available at PCC Bookstore!
Retail Price: \$35.00
Call 680-488-2470 for more information
Online information at: www.palau.edu

News/Stories Wanted

MESEKIUS NEWS welcomes stories/ articles/ announcements from students, faculty, and staff. Submission deadline is Monday at 4:30 p.m. in hard and electronic copies to adoraa@palau.edu, dilubchs@palau.edu, and alvinam@palau.edu.

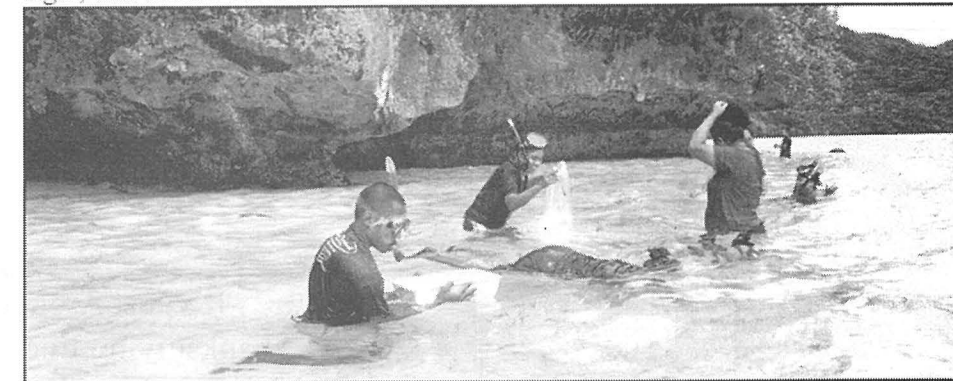
Please call ext. 250/252/253 if you intend to submit your article after Monday or for more information.

SC239 Class at Kltalrirs

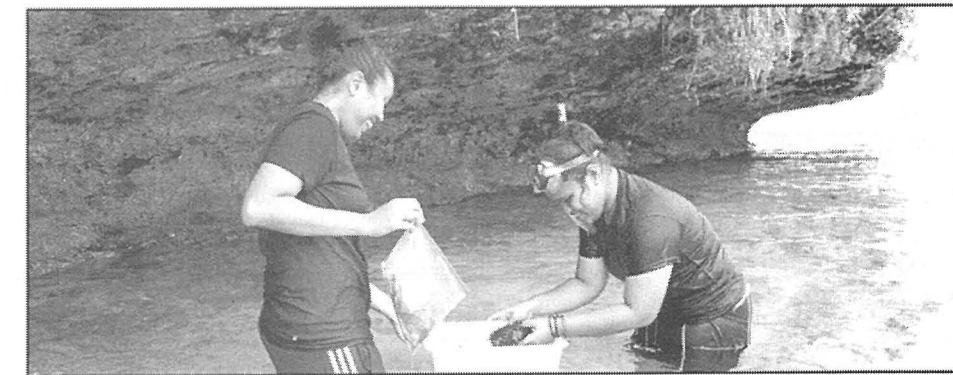
Contributed by Gamberlynn Ngimeriil

On October 30, 2012, the SC239 Natural History of Palau class snorkeled around Kltalrirs to observe marine organisms that inhabit the different marine habitats around Kltalrirs for lab experience. The trip allowed students to observe different organisms in their natural habitats. The students were able to identify by their scientific names various different species of seagrass, algae, and marine invertebrates. Kltalrirs

has become a favorite site for SC239 for its marine habitat diversity including sandy substrate, seagrass meadows, fringing coral reef, and channel slopes. This was one of the many field labs for SC239 that provide the students with a unique opportunity to experience the richness of Palau's biodiversity up close. No marine species were harmed, carelessly handled, harvested or removed from their natural habitat.



SC239 Students ID benthic organisms in the sandy substrate.



A close encounter with rare endemic species of sea cucumber.

EFNEP cont'd from p.2

participate and learn. To accommodate the adult participants, the class met from 7pm - 9pm in the evenings. At the end of the classes, a graduation ceremony was held where the parents had an opportunity to present what they had learned from the class and demonstrate their products. The following are the parents who completed the EFNEP Program:

1. Aberlynn I. Ngiruos
2. Dilbuked M., Skang
3. Donicia Tebengel
4. Doramae Ngiratred
5. Eveline Ngedebuu
6. George Faustino
7. Herelynn Skang
8. Jeanie Dismas
9. Kersten Dismas
10. Lydia Johnson
11. Maybelle Ultirakl
12. Michelle T. Sokau
13. Patricia Frank
14. Rufina Alii
15. Shobert Skang
16. Tasianna Ngirakesau
17. Theresita Skang
18. William Iderbei
19. Yorang Roman