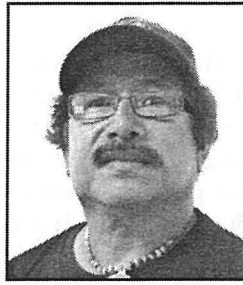


ALUMNI NOTES

Class of 1981 (MOC)

Sylvester Nestor



Earned his Certificate of Achievement (CA) in Electrical Technology. He has worked as an electrician at the airport, EPSICO, PTI and the National Government. He transferred to PPUC in 1995, where he started out as an electrician, and now has moved to become a Supervisor in the Warehouse Department.

Message: Continue to further your education.

Class of 1995 & 2002

Clarinda Worswick

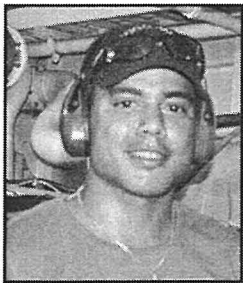


Earned her Associate of Arts (AA) degree in Liberal Arts Program and an Associate of Science (AS) degree in Education - Elementary Education. She also completed her Bachelor of Arts (BA) degree and Master (MA) degree from San Diego State University. She worked as a Library Assistant in 1997-1998, then was hired to be a teacher

at G. B. Harris Elementary School where she has been teaching until present. Message: Education is the key to success.

Class of 2009

Elly A. Amor



Earned his Associate of Applied Science (AAS) degree in Electrical Technology. He worked as a teacher in Pohnpei, FSM for a year, then was hired as an Engineer in the 01 Independence Patrol Boat. The 01 Independence Patrol Boat recently concluded an exercise here in Palau.

Message: Do you best in school. You can succeed if you put your mind to it!

Alumni Notes showcases MOC & PCC alumni who are positive role models and contribute to the quality of life in their local communities. If you are that alumnus/alumna or know someone who is, please contact the PCC Development Office at telephone number 488-2471. We would like to feature you in future issues of the *Mesekiu's News*.

Mesekiu's News
Palau Community College
P.O. Box 9, Koror, Palau 96940

Celebrating Birthdays

Dannies Uehara Nov 27
Maria Teruzi Nov 28
Leory Fritz Dec 01

Happy Birthday To You!

FSM cont'd from p.1

enjoyed games involving all the students including a friendly game of volleyball between the students and the crew from 01 FSM Patrol Boat that were here in Palau for a few days. Beautiful and energetic entertainment of songs and dances were performed by respective student organizations from FSM & RMI. The celebration bonded the students through their activities and most importantly, the celebration of the birthday of the FSM nation. The PCC FSM students and citizens would like to extend their heartfelt appreciation to the

contributors who made the event a success: High Chief Ibedul Yutaka Gibbons, Encely Ngraiwet, Landon Decherong, Charles Tachibemel, Mr. and Mrs. Yarofral, Gillian Johannes, Mr. and Mrs. Sesario Sewralur, Pastor Mino and family, Angie & Charlotte, Dean Tutii Chilton, Mrs. Salve Sugiyama, Janelle Joseph, Epimachus Moses, Tina Pohnpei, 01 FSM Patrol Boat crew, Todd Kuor, Sylvester, Vincent, Gary, Shar, Lawrence, Vanessa, Samantha, Jayven, Helston, and the many who contributed to this memorable occasion.



Students with 01 FSM Patrol Boat crew, FSM citizens and friends who brought their contributions to the celebration.

Vacancy Announcement

- (1) English Instructor, Learning Resource Center
Salary range: \$14,802 - \$24,647 per annum
- (2) Math Instructor, Learning Resource Center
Salary range: \$14,802 - \$24,647 per annum
- (3) Librarian
Salary range: \$16,010 - \$24,647 per annum

Vacancy Announcement

- (4) Associate Professor, Business Accounting
Salary range: \$18,009 - \$27,725 per annum

For application forms and information, please contact Harline Haruo at PCC Human Resources Office at 488-2470/71, ext. 227, email hr@palau.edu or download form at www.palau.edu

PCC is an Equal Opportunity Employer

JOIN THE ENDOWMENT FUND TODAY!

Invest in the future of
Our Students, Our College, and
Our nation
To support, contact us today!

P.O. BOX 9 Koror, PW 96940
Phone: (680) 488-2470/2471 ext. 251/253
Email: tellei@palau.edu
Website: www.palau.edu

More information of PCC online

www.palau.edu

Palau Community College - PCC

PALAU BEACH BUNGALOWS

Peace & Relaxation Palauan Style!

Only \$40+tax daily rate
Private a/c bedroom&bath, living room, kitchenette
Beachside on big island of Babeldaob
Melekeok State
30 minutes from Palau International Airport
RESERVATIONS: 680.587.2533
Swim, snorkel, jungle walks, cultural sites
palaubeachbungalows@palaunet.com
www.palauparadise.com

FREE!!!

Palau Community College



MESEKIU'S NEWS

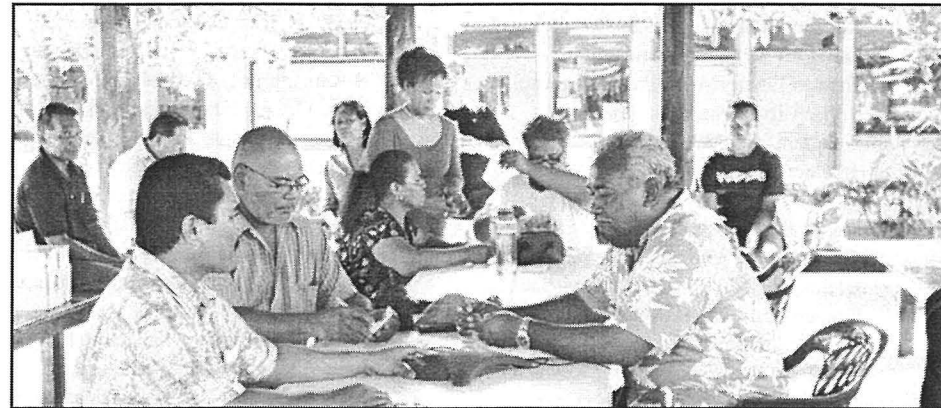


Friday, November 30, 2012

Weekly Newsletter

Volume 14, Issue 47

Endowment Thanksgiving Fundraiser Nets Over \$32,000



VP Olegeriil & Taro with President Tellei readying for the on-air show.

Thank You Palau for helping raise over \$32,000.00 toward PCC Endowment Fund. Even with the fundraiser event over, donations are still coming in, as the

people continue to walk in with their contributions. The College extends its gratitude to all for the support you have shown
Endowment Fundraising cont'd on p.2

FSM Independence Day At Long Island

Contributed by SkyInn Ifelbuch



High Chief Ibedul Yutaka Gibbons with the FSM/RMI students at Long Island celebrating FSM Independence Day.

PCC students from the Federated States of Micronesia (FSM) and Republic of the Marshall Islands (RMI) celebrated the 26th FSM Independence Day anniversary at Long Island Park on Saturday, Novem-

ber 17, 2012. Celebrating along with the students were the 01 FSM Patrol Boat crew, country-men and women residing in Palau, and special contributors. Everyone

FSM cont'd on p.4

ACCJC-WASC Approve PCC's Public Health AS Degree Program

Contributed by Deikola Olikong

Palau Community College submitted the Substantive Change Proposal for the Public Health Associate of Science (AS) Degree Program to the Accrediting Commission for Community and Junior Colleges (ACCJC) - Western Association of Schools and Colleges (WASC) in September this year. The Substantive Change Committee of the ACCJC reviewed and approved the College's Substantive Change Proposal during its November 15, 2012 meeting.

The Public Health Associate of Science (AS) Degree Program has two (2) tracks - Track I: Associate of Science (AS) Degree in Public Health and Track II: Associate of Science (AS) Degree in Public Health - Emergency Health Management. The program will begin its implementation in spring 2013. For more information on the newly approved program, contact Dean Tutii Chilton of PCC Academic Affairs at 488-2470/2471.

Palau Community College is an accessible public educational institution helping to meet the technical, academic, cultural, social, and economic needs of the students and communities by promoting learning opportunities and developing personal excellence.

Endowment Fundraising cont'd from p.1

throughout the years. The following is the list of those who have contributed to this year's Thanksgiving Endowment Fundraising event:

Donations

\$5000 - Surangel & Sons Company
 \$2000 - ACCJC
 \$1000 - Anastacia Ramarui, APAFS, OEK House of Delegates
 \$814.51 - Dr. Enais Roberts
 \$500 - Bank of Guam, Del. Lentcer Basilius, HANPA
 \$300 - Orion Maritime Services/Edna Raymond, Mr. & Mrs. Felix Okabe
 \$250 - Calvo's Insurance, Palau Shipping Co.
 \$200 - Ismael Anastacio
 \$157 - William H. Moses
 \$100 - Bilung Gloria G. Salii, Francis Matsutaro, Isaac Soaladaob Leeboo Littler, Masa-Aki Emesiochl, Mechesil Belau Melekeok State Gov't, Ngarachamayong
 \$50 - Del. Alexander Merep, Demei Obakrairur, Gamberlyn Ngirmeriil, Min. Johnny Gibbons, Terry & Jackson Ngiraingas, In Memory of Feliciano Ngiraibai
 \$30 - In Memory of Samuel Butelbai
 \$10 - Debbie Ngiraibai, Priscilla Soalabali
 \$5 - Rdiall Tellei

Tickets

\$1000 - Bilung Gloria Salii, Blue Bay Petroleum, Hawaiian Belau Rock, Mabuchi Construction Co., NECO Construction
 \$500 - Bank of Guam, Family Surgical Clinic / Sidney Roberts, Galaxy Builders, Jezzrae Wear II, Midtown Service Station, Neco Marine, Pacific Family Medical Supply, PIE Printing & Photo Service, PITI, Topside Service Station
 \$460 - T & M Kumangai
 \$450 - Palau Mental Health Planning & Advisory Council
 \$410 - Palau Tourism & Hospitality School of Excellence
 \$300 - IA Belau Company, Ngerubasang Men's Club, Palau Pacific Resort
 \$250 - Airai State Government, Koror State Legislature, Sure Save Coffee Bar, The Penthouse

The PCC Board of Trustees, Chairperson Bilung Gloria G. Salii, and college president, Dr. Patrick U. Tellei, express their appreciation to all college administrators, faculty and staff, and students for their continuing support to make this year's fundraising effort a success.

THANK YOU TO OUR SPONSORS

Carp Island Resort
 Emamelei Restaurant
 Kumangai Bakery
 Palau Beach Bungalows
 Sonia's Beauty Salon
 Tiuladokow Woodshop
 Cliffside Hotel

Fish 'n Fins
 Melusch-Dil Beauty Shop
 PCC - CRE
 Surangel & Sons Company
 Palasia Hotel
 PNCC

The Penthouse Hotel
 WCTC


Special Thank You to ECO Paradise FM for broadcasting services.

Hotel
 \$200 - Embassy of the Republic of China, Faith Based Community Solutions/ Harry Drier, Koror State Government, NDBP, Palau Conservation Society, PCC Builder's Club, Sarah's Yum Yum
 \$150 - Kayangel State Government, Sen. Raynold Oilouch
 \$120 - Matsumi Tarō
 \$110 - Dahlia Katosang, Leo Ruluked Jr., Palau Trading
 \$100 - Caroline Skebong, Chen Masang, Class of 1983, Danka Ledgerwood, Dean H. & Julie Curtis, Dixie Tmetuchl, FR Construction, Gloria Rodriguez, Karvin Flynn, Lee Stewart, Mason Whipps, Morita Corp., Mr. & Mrs. Surangel Whipps, Ngardmau State Government, Ollson Otei, Oscar Bechesrak, Palau Royal Resort, Phelma J. Palik, Phillip & Leilani Reklai, Rengil Brothers, Romana Blailles, Rosalinda Ongalibang Salii Law Firm, TJ Remengesau, Toward Enterprises, Uduch Sengebau, Yobech Toribiong
 \$90 - Kliu Kangichi, Serelina Ridep
 \$80 - Del. Lentcer Basilius
 \$70 - Terry Li Hong
 \$60 - Clarito Panaligan (Bong)
 \$50 - Advin Asito, Alan Seid, Alex Ngiraingas, BJ Takada, Bob Pineda, Christina Salii, Doreen Yoshiwo, Harline Haruo, Hasinto Asanuma, Hulda Lukas, Ismael Anastacio, Jeff Espinosa, Joe Koshiba, Joy Ngitlab Whipps, Jun Dela Cruz, Omelau, Senator Kathy Kesolei, Soledad Garcia, Yimnang Golbuu
 \$40 - Akitaya Corporation, Laura S. Mangham Melissa Ueda, Michelle Ueda, Rogelio Vergara, Tilden Teltull
 \$30 - Ewing Rudimch, Dr. Isebong Asang, Laiter Dolmers, Lesley Adachi, Ligaya Sara, Melissa Joseph, Walker Umetaro & Kokoi Umetaro
 \$20 - Amice Yechur Yuji, Brian Melairei, Debbie Ngiraibai, Delfina Sato, Dilomung Ngirkelau, Divine Ngiraimesang, Dr. Yuriko Bechesrak, Eunice Koshiba, Frank Kyota, Fritz Koshiba, Geraldine Rengil, Gibson Towai, Grace Alexander, Helen Sugiyama, Hilda Etpison, Isabella Sumang, Isebong Abbie, Jaret Reagan, Jerry Toves,

Joanny Kesolei, John Wong, Laverne Merep, Maria Joseph, Maurine Alexander, Mayumi Remengesau, Merna Kyota, Midori Mersai, Mihaina Kodep, Miriam Isechal, Noe Yalap, Norman Sato, Om Wong, Pastora Kloulubak, Peter Elechuus, Peter Gayman, Rachel Bechesrak, Sherry Ngirmeriil, Telly Bells, Teruko Aitaro, Tessmarie Kodep, Tuayar Tmetuchl
 \$10 - Aberlynn Ngiruos, Abraham Ngiruos, Yosko Aichi, Alene Reklai, Alfonsa Koshiba, Alfonso Kumangai Jr., Anke Mayer, Artin Hideyos, Bibbie Kumangai, Bradley Kumangai, Branden Kumangai, Calista Decherong, Chuuk Student Org., Clint Mersai, Clyde Yaliwelimar, Conner Ellechel, Dalton Thomas, Deborah Sebalt, Desiiu Ngirkelau, Dichil Nakamura, Dinahlee Thomas, Erica Remengesau, E-van Ongrung, Glendalynn Ngirmeriil Grace Merong, Helenda Oime, Holly Farlin, Hugler Imetengel, Hunter Yates, Imrur Remengesau, Ismael Worswick, Ivie Rudimch, Jeanne Immanuel, Jemmy Blelai, John Techitong, Jon Vogt, Joshua Kloulubak, Julie Bowen, Julita Blibei, Junior Mariur, Katei Dengokl, Kautherael Keane, Kirbi Sikyang, K-La Shiro, Kosrae Student Org., Kualteruich Remengesau, Kwaj Ngirrang, Leo Mendiola, Leona Tkel, Lesley Ngiramolau Loyola Darius, Maireng Sengebau, Margaret Kumangai, Marina Tmur Kumangai, Mark Rubasch, Martha Koshiba Meraoch Uchel, Michael Lukas, Miguel Delos Santos, Ochob Ngirkelau, Oide Kingzio, PCC Paddlers, Pohnpei Student Org., Portiana Franz, Pracy Mesubed Rebecca Tekriu, Reuben Ngirakesau, Richard Ngiratrang, RMI Student Org., Rose Aliven-Kohama, Ryan Zinchevsky Salii Akitaya, Scott Weers, Seth Techitong, Shelby Masami, Shirley Koshiba, Sisca Voigt, Tancia Alexander, Ted Glenn, Ten-ten Polycarp, Theodore Rengulbai, Thomas Remengesau, Trishia Alexander, Ubai Kingzio, Volette Polloi, Williana Shiprit, Yorang Roman

BITS AND PIECES...

Tan Siu Lin PCC Library

Hours of Operation:

Monday to Thursday: 8am - 8pm
 Friday: 8am - 5pm
 Saturday: 9am - 6pm
 Sunday: CLOSED

For information call 488-3540.

Schedule Adjustment Information

Resulting from the addition of a National Holiday on November 06, 2012, the 2012 Fall Semester has been adjusted to ensure that teaching contact hours are not diminished. Therefore, the last day of instruction has been extended to December 3, 2012 (Monday) while Final Examination period has been pushed from Dec. 3-5, 2012 to Dec. 4-6, 2012. For more information, contact Academic Affairs at 488-2470/2471 ext. 246.

Important Dates To Remember!

Nov. 30	Appreciation Luncheon
Dec. 3	Last Day of Instruction
Dec. 4-6	Final Exam Period
Dec. 10	Grades Due
Dec. 10	Last Day to Submit Application for Fall 2012 Graduation
Dec. 14	Deadline for Internship Application for Spring 2013
Dec. 17	Last Day for Change of Grades

REMINDER

2012 Annual Report covering Fiscal Period Oct. 2011 - Sept. 2012 is due at Development Office on or before January 11, 2013.

News/Stories Wanted

MESEKIU'S NEWS welcomes stories/ articles/ announcements from students, faculty, and staff. Submission deadline is Monday at 4:30 p.m. in hard and electronic copies to adoraa@palau.edu, dilubchs@palau.edu, and alvinam@palau.edu.

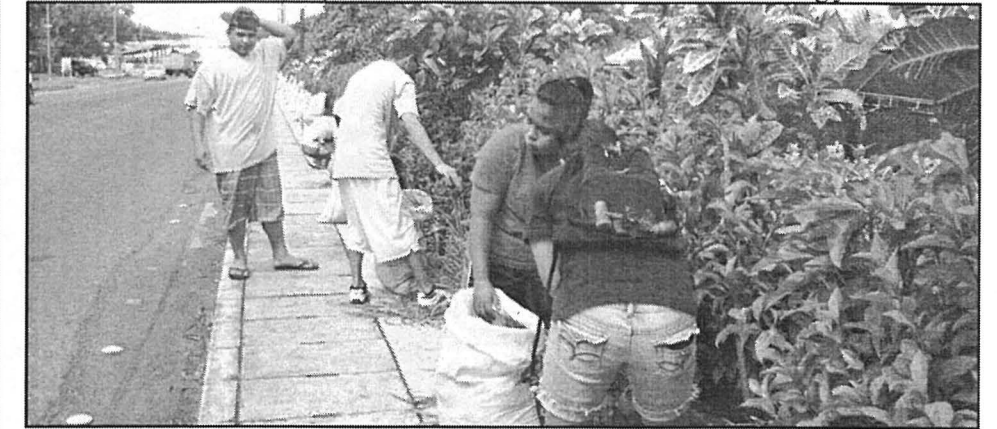
Please call ext. 251/252/253 if you intend to submit your article after Monday or for more information.

AG Students Participate In Campus Beautification

Contributed by Alex Gachalian

On Friday, November 16, 2012, Agricultural Science (AG) students joined the campus activity with the college staff to clean up to beautify the campus as directed by President Tellei. The students brought 25 bags of compost from their farm at CRE-R & D Station and filled up the ornamental plants grown in concrete boxes along the main road near the Ewatel building going to the PCC Dormitory's main gate. They removed unwanted weed species and added small amounts of complete fertilizer to

the ornamental plants which will supplement its nutritional needs before filling the planters with compost. The compost serves as both organic mulch and fertilizer. The students also swept the roadside and picked up trash that may clog the tile drainage off the main road. AG students conduct community and campus services as part of their commitment in helping the college promote its goals in assisting our constituents. Thank you AG students for your assistance and for volunteering your services!



AG students working on the planters along the main road.

Work Zone Safety Training Held

Contributed by Don Hanser

Several different groups of government employees have recently completed short term training in Work Zone Safety, offered by the Maintenance Assistance Program (MAP), formerly known as OMIP, at the college. Employees from the Bureau of Public Works road crews, Koror State Public Works, including Solid Waste Management Program, and Airai State government, have participated in the training. Topics covered included basic work-

er safety, traffic control procedures, traffic control devices, low-speed traffic control, high speed lane closures, parking lane/shoulder work, flagging operations, pedestrian considerations and nighttime operations. The course included classroom lecture and discussion, as well as field work. The course was concerned with what these workers can do to protect themselves, and to provide safe and efficient roadways during special working operations.



Traffic control devices used in the field work as part of the course.