

## Alumni Notes

### Class of 2004 (PCC)

Mitsue Ngirailemesang -



year now.

2004 PCC graduate with an Associate of Arts (AA) degree in Liberal Arts (LA). She is currently working at Head Start Office as a Social Worker. She has been working there for a

### Class of 2003 (PCC)

Heather Ngiratreded -



working there for a year now.

2003 PCC graduate with a Certificate of Achievement (CA) in Tourism and Hospitality. Ngiratreded works as a Marketing Representative 2 at Palau Visitor's Authority. She has been

### Class of 1988 (MOC)

Arnold Route -



1988 MOC graduate with a Certificate of Achievement (CA) in Agricultural Science (AG). He has been working for the last 8 years as an Agriculture Extension Agent for the Northern Marianas College-Cooperative Research Extension & Education Systems (NMC-CREES). Kisorae who is currently on island to attend a land grant workshop encourages all students to do their best.

**Alumni Notes** showcases MOC&PCC alumni who contribute to the quality of life in their local community and are positive role models for other PCC students to emulate. If you are that alumni or know someone who is, please contact the PCC Development Office at telephone number 488-2471. We would like to feature you in future issues of the *Mesekiu's News*.

**Mesekiu's News**  
Palau Community College  
P.O. Box 9, Koror, Palau 96940

## Celebrating Birthdays

Jovanka Koshiba December 8  
Veronica Kloulechad December 11  
Herman Rdechor December 11

**Happy Birthday To You!**

## More Show Support to PCC Endowment Fund



Meyuns Elementary School P.E. Teacher, Jolene Rafael

Meyuns Elementary School Physical Education Teacher, Jolene Rafael is the new Endowment Fund member. PCC welcomes the new supporters of the Endowment Fund and invites others who have not signed up to show their support as well. For more information about the PCC Endowment Fund, please contact Hulda, Dilubch, Charlene, Koyungil, or Armstrong at the Development office at ext. 253.

## 2006 Shell NBL-Division II Game Schedule for PCC Mesekiu Team

Date	Time	Team 1 vs. Team 2
12/09/06	7:30pm	Jaquars vs. Mesekiu
12/14/06	9:00pm	Ngiwal Central vs. Mesekiu
12/22/06	7:30pm	Kinsmen vs. Mesekiu
12/26/06	9:00pm	Matadors vs. Mesekiu
12/29/06	9:00pm	Ngiwal 79ers vs. Mesekiu

\* All games are played at the Palau National Gym.

Visit PCC website: [www.palau.edu](http://www.palau.edu) and learn all about Palau's only institution of higher education. While there, check out the PCC weekly newsletter *Mesekiu's News* including back issues!

## Job Opportunities Available at PCC!!!

**Position:** Librarian

**Salary:** \$16,010 to \$24,647 per year depending on qualifications, education, and experience. Benefits include health and life insurance, generous leave, and paid relocation expenses. Housing provided.

### Examples of Duties:

- Provides professional library services to the College and its clients, including but not limited to: Assisting individuals and groups in locating and obtaining library materials;
- Maintain and update the library circulation and reference collection with general and technical resources, serial publications, multimedia resources, print resources, and electronic resources.
- Supervise and provide assistance in cataloging, indexing, and technical services.
- Communicate information and market library services to students, faculty, administration, and the public, etc.

### Minimum Qualifications Requirements:

- Masters of Library and Information Science from an ALA accredited program, or international equivalent.
- Minimum 5 yrs. experience in an academic or public library, with at least 2 yrs. supervisory experience.
- Must be able to work with a team as a leader.
- Must have the ability to supervise, motivate, and inspire co-workers.
- Must be able to communicate verbally and in writing have strong diplomatic and interpersonal skills.

**Position starts ASAP and is open until filed.**

### General Information:

Application forms can be obtained from Human Resources Division at P. O. Box 9 Koror, Palau 96940 or at our website: [www.palau.edu](http://www.palau.edu). Send completed application with transcripts, resume, and verification of previous employment (s), if any, to same address. For further information, call 488-2470/2471 or come in and see us.



# Palau Community College MESEKIU'S NEWS

FREE COPY

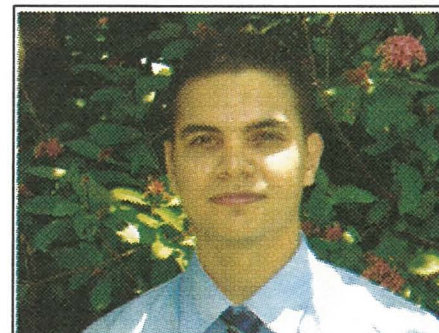


Friday, December 08, 2006

Weekly Newsletter

Volume 8, Issue 48

## PCC Student Attends Training in Nara, Japan



PCC Student Trustee, Shane Salvador

The "Training of Young Leaders in Cultural Heritage Protection in Asia and the Pacific" was held late last month in Nara, Japan. This two-week training program was sponsored by the Asia-Pacific Cultural Center for UNESCO (ACCU) International Exchange Program under the UNESCO/ Japan Funds-In-Trust for the Promotion of International Cooperation and Mutual Understanding. After submitting his application form with an essay entitled, "The Protection of Cultural Properties in the Case of Palau", Shane Salvador was chosen to attend this training program. Other participants came from Bhutan, Brunei, Fiji, Indonesia, Laos, Mongolia, Papua New Guinea, and Thailand.

As part of the program, the participants went sight-seeing and visited nine cultural heritage sites, one of which is the historical Himeji Castle.

Salvador also had the chance to meet and sit in lecture classes taught by University Professors, one of Nara Prefecture's Board of Education Members, Nara Folk Museum Curator, and the Director of ACCU. He was also able to meet students from other Japanese

## UH Officials Visit PCC, Clarify Tuition Rate Increase



(l-r) PCC President Dr. Patrick U. Tellei, University of Hawaii Associate Vice President of Academic Affairs Mike Rota, PCC-BOT Chairperson Bilung Gloria G. Sali and Dr. Falautusi Avegalio during their luncheon-meeting regarding the new UH tuition increase. The UH officials are on island to meet with Palau's leaders as well as education leaders to give details and clarify issues regarding the new tuition increase that will affect all Pacific islander students including students from Palau Community College who plan to enroll in the University of Hawaii School systems.



(l-r) Nara Prefecture's Board of Education Member with the Participants

## PCC Offers CE Training Room to Financial Institutions

Palau Community College has been availing its Continuing Education (CE) training room, for the past two weeks, to the participants of the Core Credit Training organized by the National Development Bank of Palau (NDBP) through the Association of Development Financing Institutions in Asia and the Pacific (ADFIAP). The participants of this training came from Fiji, Saipan, Federated States of Micronesia, Bank of Hawaii, and NDBP.



National Development Bank of Palau Employees at CE Training Room

## FALL SEMESTER 2006

### Important Dates to Remember

August	1 (T)	Faculty Report for Duty
August	7-11 (M-F)	Placement Testing
August	14-16 (M-W)	Freshman Orientation & Advising
August	17 (TH)	Registration
August	21 (M)	First Day of Instruction
August	21-25 (M-F)	Late Registration/ Drop & Add Period
September	4 (M)	Holiday: Labor Day
October	2 (M)	Holiday: Independence Day
October	3 (T)	Last Day to Remove Incomplete Grades for Summer Session
October	9-13 (M-F)	Mid-Term Period
October	20 (F)	Last Day for All Withdrawals
October	24 (T)	Holiday: UN Day
November	23 (TH)	Holiday: Thanksgiving Day
November	23-24 (TH-F)	Student's Thanksgiving Break
December	8 (F)	<b>Last Day of Instruction</b>
December	11- 13 (M-W)	<b>Final Examination Period</b>
December	18 (M)	<b>Grades Due</b>
		<b>End of Fall Semester</b>
		<b>Students' Fall Recess</b>

## Deepest Condolences to Dilubch Samil

*The College would like to express our deepest condolences to Dilubch Samil, PCC staff member, on the loss of her dear sister, Mellomes Samil. Our prayers and best wishes are with you during this very challenging time.*

*From your family here at PCC.*



## BITS AND PIECES...

### THANKS

#### PCC Scores 100%...

Last week, Palau Community College aced the Koror State Government Environmental Survey with a 100% score. PCC Board of Trustees and President Tellei would like to thank all the PCC staff for all their hardwork and efforts in keeping the college clean, neat, and beautiful. Job well done!

### ANNOUNCEMENT

#### To All Second Year Students and Academic Advisors...

*by: Dean of Academic Affairs and Extension Program Coordinator*

In preparation for Spring Semester 2007 Internship placement, we need to know the number of students who will be eligible to participate in the training and their respective trade areas at this time.

To assist in this effort, Student Advisors are requested to review their advisees' folders and to advise those who will be eligible to participate in the training to come to Academic Affairs Office and see the Extension Program Coordinator, Mr. Vincent Ito, and fill out required application forms. Application forms are now ready for pick up anytime during working hours. Deadline for submission of completed application forms is Friday, December 22, 2006 in order for a student to be considered for internship placement.

### CORRECTION

#### To Err is Human...

Last Week's Issue of Tia Belau and Palau Horizon newspapers stated that Isaac Soaladaob and Dr. Soaladaob donated \$100 to PCC's Endowment Fund Thanksgiving Fundraiser; however, they donated \$200, not \$100. Isaac Soaladaob and Dr. Soaladaob, we sincerely apologize for our error.

## Endowment Fund Club Gathering Set For Thursday December 28

All bi-weekly donors to the PCC Endowment Fund are reminded to come to PCC on December 28<sup>th</sup>, 2006 and complete their application packets, enabling them to get refunds for their donations. This reminder is for those who have not completed their packets.

Here are a few steps to help explain the filing process for your refund: Step 1: Fill out top portion of tax refund form and sign your name on the bottom. Step 2: Please bring a copy of your last check stub for pay period 26 of the 2005 calendar year. Step 3: Bring completed form and a copy of your check stub to PCC on December 28<sup>th</sup> between 1:00pm- 5:00pm at the PCC Courtyard and be treated to a delicious lunch and be eligible to win some great prizes from our raffle drawing.

When your refund has been released, PCC will contact you and your refund may be picked up at the College. (If you do not

have a form, please do not hesitate to call PCC Development Office at 488-2470/2471 ext 253 and we will either deliver the tax form or fax one to your office). Refund checks will take approximately one to two weeks to be processed. Remember, the sooner we file your application, the sooner you receive your refund!

### Got Pictures?...

The Student Body Association (SBA) is making a yearbook this year. They are encouraging all students to participate by contributing photos. Bring your pictures to the SBA office, or contact any of your senate members to turn in your pictures. SBA also requests the assistance from any student or faculty member who has had previous experience in creating a yearbook to join their yearbook committee.

## PAL/ PIALA Conference Participant Thanks All Supporters

*By: Ministry of Health Librarian, Mina Saiske*

For all the hard work, we did well to achieve our goal in hosting a successful PIALA conference last month. I would like to congratulate everyone for a job well done, especially Mrs. Gretchen Reynolds, Pam Bidwell, and Lorraine Tellei. Also, the food, finance, and logistics committees, and especially the program committee. Without everyone's support, the conference would not have been as successful. The conference gave the participants, from different Pacific Islands, the opportunity to share their various views regarding libraries and archives through various activities. Also, one of the highlights of the conference was a trip to Carp Island Resort for it gave the participants the chance to have their workshops in fresh air and enjoy the beautiful scenery.

Please allow me to extend my warmest congratulations for the successful launch of the partnership of libraries. I

am also convinced that together, hand-in-hand, we can make it.



Former PCC Librarian, Gretchen Reynolds

I would also like to take this opportunity and mention that Mrs. Gretchen Reynolds is a gifted designer, a good team player, and a very dedicated and productive employee. She would definitely be an asset to our organization. I just want to congratulate her on her inspirational speech as the Master of Ceremony at the conference

and her presentation on behalf of PCC. I would like to thank her for her hard work and initiative to harmonize PAL and PIALA. She has also dedicated a lot of her time to PCC and therefore, has left a print in our hearts that has inspired us to continue in her footsteps.

Again, it was a pleasure to meet and make new friends during the conference. I am looking forward to seeing everyone again in the next conference.

### GOT A STORY?...

We want to know the scoop over at your office, what's new, what's being implemented, etc. Share your news with us by bringing your articles to the Development Office **no later** than Wednesdays at 10am each week.

## Next Week Is Exam Week!!!

For all PCC students, this weekend will probably be devoted to hours of study and research in preparation for next week's final exams. While most of you are already making plans for how you will be spending your Christmas break, you must first make sure that you successfully pass all your classes. One way to do that is to be as prepared for the final exams and to do your best, thus improving the likelihood of you having a successful 2006 fall semester. Below are final tips for students as you study for finals. While some of them may sound like repeats, they have proven to be useful study guides that benefit any student who heeds them. These tips are:

#### 1. Be Prepared

The most important factor in exam success is preparation. No matter how many helpful hints you employ, nothing works as well as making sure you've studied enough.

#### 2. Study Your Weakest Subjects First

Why? You'll be fresher and therefore better able to deal with difficult areas, and you'll have more time to deal with any problems that arise.

#### 3. Ask for Help

If you're having trouble with a particular subject, do not be afraid to ask for help. Your teacher and fellow students will be glad to give you a hand.

#### 4. Understand vs. Memorize

You may pass your exams if you memorize the material, but you'll improve your grade considerably if you understand what it is you're memorizing. You'll also find the material easier to remember.

#### 5. Look at Old Exams

They can be useful study tools, as long as you don't limit your studying to them.

#### 6. Eat Well and Get A Good Night's Sleep

Take care of yourself during exam week - you're going through a lot of stress. Make sure you hold up well.

*Good Luck!*

