

PCC Mesekiu Overwhelms Defending Champions, Airai Aces

On Thursday December 5, 2002, the PCC Mesekiu (Baseball Team) in an overwhelming fashion, defeated last year's champions by a score of 9 to 7. Mesekiu took an early lead when Ngeskebei Saburo reached base on an error, stole second and scored on a single by Rodney Kazuma. Behind superb pitching by Houston 'Stone' Mad and some excellent defensive plays, Airai was held scoreless until the bottom of the fifth when they scored three runs on a walk to lead off hitter and couple of costly errors, resulting in a 3 to 2 lead by Airai at the close of the fifth.

Not to be denied, Mesekiu roared back at the top of the sixth with four runs when both Calvin Johannes and Cleofas 'Opas' Iyar reached base on singles and Ngeskebei tripled to bring them home. After Alins Kyota drove in Ngeskebei and stole third base, Rodney brought him home for a 6 to 3 lead. In the top of the seventh and the final inning, Stone singled to left field while Calvin reached base on an error. Opas then tripled to bring in Stone and Calvin, and scored on fielder's choice by Dio Olikong, increasing the lead to 9 to 3. In the bottom of the seventh, Airai mounted an offense, which brought out Alins to the mound for a save. The Chicago State University bound duo of Houston Mad and Alins Kyota combined to secure a win for Mesekiu. Stone was credited with a win and Alins with a save.



Houston 'Stone' Mad



Alins Kyota



Ngeskebei Saburo



Cleofas 'Opas' Iyar

PCC Library Statistics on BOOK CIRCULATION

| | OCT. 1999 - SEPT. 2000 (Year 1) | OCT. 2000 - SEPT 2001 (Year 2) | OCT. 2001 - SEPT. 2002 (Year 3) |
|--------------|------------------------------------|-----------------------------------|------------------------------------|
| Oct. | 2,536 | 4,295 | 3,019 |
| Nov. | 3,474 | 4,153 | 3,081 |
| Dec. | 1,898 | 2,594 | 1,133 |
| Jan. | 3,186 | 2,799 | 1,843 |
| Feb. | 5,547 | 3,207 | 2,274 |
| Mar. | 4,299 | 4,037 | 2,450 |
| April | 4,227 | 3,631 | 2,805 |
| May | 4,445 | 2,582 | 2,198 |
| June | 4,826 | 2,754 | 2,233 |
| July | 3,258 | 1,935 | 2,403 |
| Aug. | 3,139 | 2,211 | 2,172 |
| Sept. | 9,350 | 2,968 | 2,976 |
| TOTAL | 50,185 | 37,166 | 28,587 |

For information about PCC Library programs and services, contact 488-2471 or 488-3540.

Meyuns Teacher Enrolls in Endowment Club

Meyuns Elementary School teacher Mrs. Gloria Oseked-Tem is the newest addition to the PCC Endowment Contributors' Club. As a member, she donates a certain sum directly out of her paycheck in the form of an allotment to the Palau National Treasury. There, her donation is transmitted to the PCC Endowment Fund. This process occurs every two-weeks for the duration of the calendar year. At the end of the year, PCC will issue a receipt for the sum of her donation. She then uses the receipt to file an application for a 100% refund, which she will receive as PCC is a non-profit organization. Oseked-Tem is an alumna of PCC and says that the reason she decided to begin contributing to the Endowment Fund is because she has benefited from her experience at PCC and truly believes that future students ought to attend PCC as it will help prepare them for any future endeavor. Thank you Gloria, and welcome to the PCC Endowment Contributors' Club!



Celebrating Birthdays

Armstrong Debelbot December 18
Myorang Besebes December 19

Happy Birthday To You!!!



Palau Community College MESEKIU'S NEWS

FREE COPY



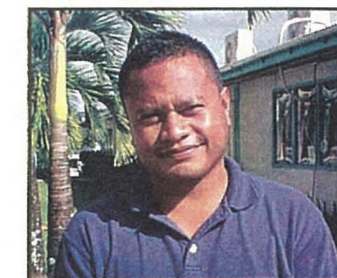
Friday, December 13, 2002

Weekly Newsletter

Volume 4, Issue 49

Palau SBDC To Work Closely with USDA-FSA

Gearing up to meet its mission in encouraging economic growth through sustainable business development, the Palau Community College-based Palau Small Business Development Center has teamed up with the United States Department of Agriculture's Farm Service Agency (USDA-FSA) to deliver a loan targeted at individuals venturing into or currently operating a farm. The agreement between these two distinguished entities calls for the Palau SBDC to serve, in general, as (1) an 'extended arm' of the USDA-FSA office in Guam; acting as a 'pre-screening' medium where prospective loan applicants are screened for eligibility requirements and having their names conveyed to the USDA-FSA office for final eligibility confirmation and approval, and (2) as a tracking entity for the FSA where it will regularly meet with the FSA loan recipients to determine adherence as per the purpose of their loan requests as well as regulations established by the FSA and their loan program. USDA-FSA, on the other hand, will determine and award loans to eligible and prospective applicants and, along with the Palau SBDC, will have their official regularly on island for tracking and monitoring loan recipients and their farm.



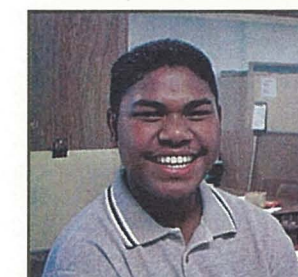
Mr. Clinton Ngemaes heads the Palau Small Business Development Center located at PCC

To be considered for the USDA-FSA Direct Farm Operating Loan Program for the Republic of Palau, an individual needs to meet the following eligibility requirements: 1) Be a citizen of the US, Palau, or any U.S. affiliated territories; 2) Be unable to obtain the needed credit from a private commercial lender considering all assets and income; 3) Be old enough to legally sign a promissory note and be mentally competent; 4) Have training and education or recent on-the-job experience managing and operating a farm to demonstrate to FSA that one has the basic financial, production, and overall management skills to successfully carry out the agricultural enterprise; 5) Not be delinquent on any U.S. Federal debt; 6) Not have previously caused monetary loss to FSA; 7) Meet the definition of a 'family farm' as

**Continued on Page 3*

World Students' Summit Affirms Commitment to Sustainable Development and Human Security

From October 29-31, students from all over the world gathered at Ritsumeikan Asia Pacific University (Japan) to attend a Students' Summit, and collectively affirmed their commitment to the cause of sustainable development and human security. According to Mr. Kazuichi Sakamoto who is President of Ritsumeikan Asia Pacific University, the "summit welcomed student representatives from a total of 79 universities, 58 universities from 25 countries and regions around the world and 21 Japanese universities, along with representatives from our Ritsumeikan University and Ritsumeikan Asia Pacific University, which enrolls students from 66 countries and regions". A student from Palau Community College, Mr. Ngirmeriil Ngirmeriil, represented PCC at the conference. His active participation in the conference was evident in Mr. Sakamoto's letter to PCC President Patrick U. Tellei as the former thanked President Tellei for the support received from PCC.



PCC Student Ngirmeriil Ngirmeriil attended the Students' Summit in Japan from October 29-31, 2002

At the Summit, students participated in workshops that covered the following topics: 1) Globalization of Media and its Relationship with State and Corporate; 2) Global Cooperation; 3) Educational System of the 21st Century; 4) Human Rights; 5) Society and Health; 6) Transfer of Technology; 7) International Society and Peace; 8) Indigenous People; 9) Poverty Eradication; and, 10) Co-Existence of Man and Nature. PCC has obtained copies of the Students' Declaration as well as Statements of each of these topics which are available at the PCC Development Office for any interested individual.

In concluding his letter, President Sakamoto stated his strong belief that the students who were able to participate in the Summit will bring back what knowledge and information they gained to their respective universities, countries and regions. As these students will lead the world's nations in the 21st century, what they learned at the Summit will help them as they take on this role. Because of the Summit's success, President Sakamoto has requested PCC President Tellei for his and the College's continued support in the future.



Mesekiu's News

Palau Community College
P.O. Box 9
Koror, Palau 96940

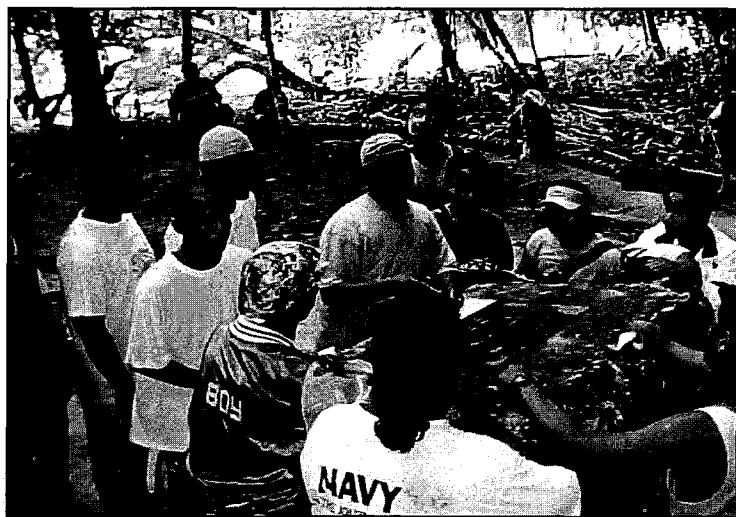
Project Beacon Takes Students to ULONG

By Michelle Mengidab, Lelean Sigrah, and Shiro Kesol

On the 22nd of November, Project Beacon conducted their second cultural trip for their clients this semester. The trip was to the State of Angaur. Alas! Rough waters prevented us from reaching our destination. So instead, we detoured to Ulong Island. The purpose of the trip was to acquaint ourselves with some of Palau's historical and cultural sites, and Ulong Island provided us with a rich and unique array of both.

According to our group leader, Project Counselor Mekeos Silil, the island of Ulong was once a settlement before the people dispersed to different islands in Palau. The island has its own historical treasures and beauty, which are hidden in its forest. And; to see it with your own eyes is enough to imagine how these people lived and valued their traditional arts. It has some cliffside, and the memorial monument of the well-known Captain Henry Wilson, who visited the island long ago when it was still inhabited. "I really like the drawings in the cave, like the handprints, turtles, the moon and others. It was an awesome sight to see", said one of the participants. Another said, "Being on the island and seeing the historical sites was interesting for me since I am a non-Palauan". After the trip, most of us came to understand and to appreciate the island's values and how the island people survived long ago. Our special thanks to Mekreos, Midori Mersai, Geraldine Renguil, as well as peer counselors Edwin, Vernice, and Linus for trekking the rough waters with us, and for the opportunity to learn more about Palau's history and culture.

We strongly recommend that other students should visit Ulong Island, not only to learn, but also to understand the history of the island and to come to terms with the island's spirits. Participating in these Project Beacon field trip activities have made our learning a more productive and interesting experience. In addition, Project Beacon services such as counseling and tutoring have helped us become better students, and we urge you to take advantage of these services. For more information about the PCC Project Beacon, contact telephone number 488-3073 and/or 488-2470/2471.



Students visit Captain Henry Wilson's Memorial as they listen to Silil's (c) lecture about his arrival in Palau

Spring Semester 2003 Schedule

(From the PCC Office of Admissions & Financial Aid and the

Office of Registrar and Records)

The Palau Community College Office of Admissions & Financial Aid as well as the Office of Registrar and Records would like to inform the public of the following schedules for Orientation, Testing, Advising, and Registration activities for the upcoming Spring Semester 2003:

Schedule for New, Continuing, Returning and Readmit Students

December 15, 2002 - January 7, 2003

Placement Testing

January 9, 2003

Orientation, Academic Advising, and Registration

January 13, 2003

First Day of Instruction

January 13-17, 2003

Late Registration/Drop & Add Period (\$10 fee will be assessed)

The following steps should be followed in order to register for classes:

1. Pick up your financial aid clearance at the Office of Admissions & Financial Aid
2. Present your clearance at the Business Office and pay \$50.00 tuition deposit
3. Present your clearance at the Registrar's Office and pick up your Registration Packet
4. Meet with your academic advisor for program planning and advising
5. Submit your completed registration worksheet to the Registrar's Office and wait for your official class schedule.

Late Registration Period (January 13-17, 2003) - Pay \$10.00 late registration fee and the \$50.00 Tuition Deposit at the Business Office. Present the receipt(s) to the Registrar's Office, pick up your Registration Packet and follow the steps outlined above to register for class(es).

For more information about registration, please contact Palau Community College Office of Admissions & Financial Aid or the Office of Registrar and Records at 488-2470/2471, extension 234, 247, or 274. Our office hours are from 8:00 am - 5:00 pm Monday to Friday. Call us, we will be very happy to assist you!

ENROLL AT PCC TODAY AND SECURE YOUR TOMORROW!

PCC Vacancy Announcement

ANNOUNCING

VA #: 02-005

Open: 11/13/02 Close: Until filled

Position: (1) Librarian

Salary : \$16,010 to \$18,730.00 per annum depending on qualification

EXAMPLES OF DUTIES

Provide professional library services to the College and its clients including but not limited to, assisting individuals and groups in locating or obtaining library materials. Maintain and update the library circulation and reference collections of print resources such as general and technical books, serial publications, documents, and other material; maintain and revise, as required, index, control systems for general, technical books and other library printed materials; assist in selecting, ordering, cataloging, classifying, processing of information to students, faculties, public, regarding library activities such as services/facilities available, procedures and policies; develop and implement a variety of library orientation programs to a client; assist in the preparation of the library budget; assist faculty and other clients in developing bibliographies, promotion, outreach services and activities; and serve on the College committees as assigned; select, direct, train and supervise student library workers; and perform other related duties as assigned by supervisor.

Minimum Qualification Requirements

Master or Bachelor's degree from an accredited higher education institution in library science or, possess field experience, possess knowledge and skills required to perform the duties and responsibilities of a community college librarian. Previous successful librarian experience in higher education institution is preferable.

General Information

Application forms can be obtained from Human Resources Division at Palau Community College P.O. Box 9 Koror, Palau 96940, tel. no. (680) 488-2470/2471, fax no. (680) 488-2447. Send completed application with transcripts, resume, and verification of previous employment, if any, to above address. Please feel free to contact us at the above numbers should you have any questions or need further information.

PCC IS AN EQUAL OPPORTUNITY ACTION EMPLOYER!

PCC is Santa's Elves Tonight!

Don't forget to bring your children and family to 'Bethlehem' tonight. It is PCC's turn to be Santa's Elves by distributing lots of goodies and sweets to children of all ages. Tonight's Christmas caroling will be performed by the PCC Music Club as well as Mindszenty High School students. If you recall, PCC's Music Club was a big hit last year and will surely draw a big crowd again this year. At the same time, Mindszenty High School has been practicing just as hard to ensure a musical performance to be enjoyed by the listening audience. Thus, make sure to join us tonight at 'Bethlehem' (situated between the Olbiil Era Kelulau and the Palau National Gymnasium) for an evening of entertainment where we share the spirit of Christmas through music that is familiar and loved by all.

Palau SBDC, from front page

defined by the FSA regulations; and 8) Not be currently serving as an elected or politically appointed official of the Palau National Government (spouses, sons, and daughters of such officials are ineligible for the FSA loan).

Apart from the Palau SBDC's role with the loan program, the Center is also assisting interested FSA loan applicants with their business plans which are highly considered by the FSA to determine feasibility and credibility of the loan request. Similarly, the Center, working alongside with the Republic of Palau Ministry of Resources and Development, will develop and organize agricultural trainings and workshops targeted at individuals venturing into or currently in the business of producing and selling agricultural products to the general public. For more information on the USDA-FSA loan, contact Mr. Clinton Ngemaes at telephone 488-6004 or stop by and visit him at the PCC campus.

FYI...

Fundraiser Exceeds Goal by Over \$10,000

The College's 4th Thanksgiving fundraiser for the PCC Endowment Fund set a \$20,000 goal. However, we are most happy to report that with all donations having been tallied, we raised a total of \$30,847.70 because of the generosity of local individuals, businesses, agencies and groups. ONCE AGAIN, THANK YOU PALAU FOR YOUR SUPPORT!

JICA Palau Office Holidays

The Palau JICA Office has issued a notice informing the public that its office will be closed on the dates below to observe holidays:

December 23 - Emperor's Birthday

December 25 - Christmas Day

December 30 thru January 3 - New Year's Holiday

ACCJC Moves to New Location

The Accrediting Commission for Community and Junior Colleges has moved to a new location. Its address and contact numbers are now listed as:

10 Commercial Boulevard, Suite 204

Novato, CA 94949

Telephone: 415-506-0234

Fax: 415-506-0238

Many Thanks to Adult High School Students

With the Christmas Spirit spreading over the campus like an epidemic, the PCC Adult High School students are not immune. Their spirit of goodwill was such that they volunteered to help the Development Office staff to prepare the goodies and sweets to be given away by Santa's Elves tonight. Many thanks to the Adult High School students for helping us out. Now we know who has been nice this year!