

National University Online Degree Programs

National University, based in San Diego has 27 campuses throughout California with an FTE of 18,000 students. NU has a distinctive and intensive one-course-per-month format for online degree programs that allows adults to complete graduate and undergraduate programs in an accelerated time frame. Students do not have to leave home, family, or work to pursue any of the degree programs listed below.

Stop by at the PCC-Continuing Education Office for more information.

Online Degree Programs Offered

Master Degrees

- ✓ MA in Teaching
- ✓ Global MBA
- ✓ Master of Forensic Sciences
- ✓ MS in Educational Technology
- ✓ MS in Electronic Commerce
- ✓ MS in Instructional Technology

Bachelor Degrees

- ✓ BA in Business Administration
- ✓ BA w/a Major in Global Studies
- ✓ BA w/a Major in Criminal Justice

More information about National University may be found at www.nu.edu.

For specific information about NU's Online Degree Program may be found at www.online.nu.edu.


For personal assistance, send email to: pacificinfo@nu.edu.

National University, founded in 1971, is accredited by the Western Association of Schools and Colleges.

National University extends its appreciation to Palau Community College's President Patrick Tellei and PCC staff for their assistance and logistical support.



Mesekiu's News
Palau Community College
P.O. Box 9
Koror, Palau 96940



Celebrating Birthdays

Epimachus Moses	January 28
Joan Philip	January 28
George Juarez	January 29
Vernice Yuzi	February 2
Eileen Babauta	February 2

Happy Birthday To You!!!

Omereng el Saul el mora PCC Staff

Kom kmal mlo mesaul ra bedekiu ma bngemiu el mer ngak er sera bol secher a brother er ngak. Tokubets el lomereng el saul a mora Keith ma Leona el kmal mlo mesaul el mle cholmengak ra Ngaremlengui er sera kemeldiil el sils. A suli a kmal mo medechel era renguk el diak kubes. A Rubak el Dios lomekngeltengat er kemi el rokui. Kom kmal mesulang.

Marlyne "Losii" Olkeriil



Palau Community College MESEKIU'S NEWS

FREE COPY



Friday, February 1, 2002

Weekly Newsletter

Volume 4, Issue 5

PCC Set to Host its First PDS Conference

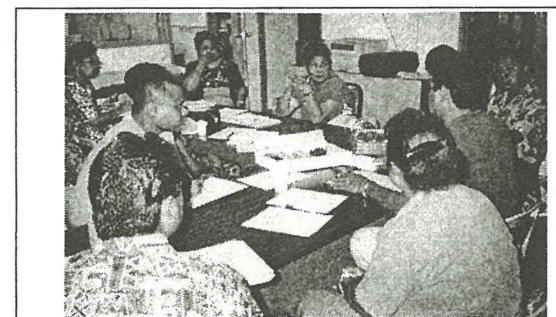
Palau Community College is set to welcome over 400 participants of the 2002 PDS Conference on its campus on Monday, February 4. According to conference organizers, the first group of off-island participants are due to arrive tonight in time to attend the pre-conference scheduled for this weekend.

Over seventy (70) are expected to arrive over the weekend from the surrounding islands in Micronesia, Saipan, and Guam. Others are coming from American Samoa, Hawaii, and mainland U.S. About three hundred thirty (330) local participants have also registered for the week-long conference.

The Professional Development Seminar (PDS) is an annual training opportunity conducted by the Pacific Islands Chapter (PIC), which PCC's Trio program is a member, for friends and colleagues to meet and share ideas through focused workshops and sessions regarding educational strategies and management information that are crucial to students' services. The 2002 PDS conference also serves as a fundraising activity for the Pacific Islands Chapter. Proceeds from this seminar will be used to help PIC to further their mission which is to ensure that educational equity extends to under privileged students.

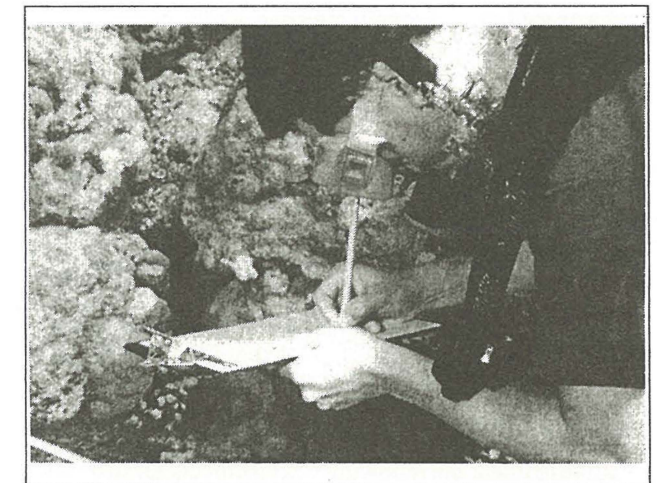
To successfully host a conference of this magnitude, PCC President Tellei has appointed key college staff and faculty to chair the various committees needed to organize the conference. Since the President's appointment, the 2002 PDS Organizing Committee has been diligently working to make sure everything is in place for the 400 plus participants expected on campus next week.

Detailed information about the 2002 PDS conference can be obtained by calling Ms. Kuye Belelai at tel. 488-2962.



The 2002 PDS think tank makes final preparation two days before the opening day of the week-long conference.

PCC-CRE Conducts Annual Survey of Ngerumekaol Reef



PCC-CRE staff donned scuba gears to conduct the three-day survey of Ngerumekaol reef.

In its continuing effort to promote marine conservation awareness, the PCC-CRE's Natural Resources and Environmental Education Division (NREED) along with the Koror State Rangers conducted the annual reef survey of Ngerumekaol reef.

Over a period of three days, the NREED team completed 15 line-transect surveys and 12 circle-transects. The line transects were done to determine the quantity, quality, and variety of benthic invertebrates on the north and south sides of the channel reef and along the front side of the reef.

Each of the line transects were done by two staff members and covered a length of 15 meters. The circle transects were done in order to determine the amount of valuable invertebrate species such as the giant clam, sea cucumbers, crown of thorn starfish, and trochus.

Once the data is sorted, it will be compared to the surveys from previous years to see how the reef has changed over the years. For detailed information about this survey, please contact the PCC-CRE office at 488-2746.

The NREED staff thanks Gary Mereb, Davis Rekemesik, and Filmore Ngiraibai of the Koror State Rangers for their assistance with this project.

Environmental Diplomacy and Advocacy Training Program for Pacific Women and Youth

The Pacific Concerns Resource Center (PCRC) is inviting Pacific women and youth actively involved in environmental protection in the region to apply for the above mentioned training program scheduled to be conducted in May 20-31, 2002 in Fiji.

The training program will provide participants with:

- enhanced understanding of environmental laws and principles and their uses, and the role of other regional and international bodies.
- practical skills of negotiating, lobbying and using the media as well as developing effective advocacy strategies for civil society groups in the Pacific.

Selected participants will be fully funded (ie. travel, accomodation, meals, etc.)

Please contact the Continuing Education Office at 488-2471 for an application form and further details. Applications must be submitted no later than February 28, 2002.

PSO President Thanks Members for Successful Fundraising

by: Vierra J. Toribiong, PSO President

I would like to thank the following PSO members for their effort during our last car wash fundraising. It was extremely successful and we are still counting the proceeds. I am most grateful for the support that I have been getting from all the members, it certainly makes my presidential responsibilities a little easier to bear.

Also on behalf of the Palau Student Organization, I would like to gratefully thank Veronica "Pind" Sengebau of Student Services Office and her family. Not only did she donate money and her industrial vacuum cleaner, she also made us lunch. The "Demok" was to die for - "kemengang er ngii e oureng er ngii."



"Pind" during her teen years.

The following are the PSO members who helped make the car wash fundraising a huge success:

Lance Wally	Alynne Kikuharu	Marsha Kazuma
Mickey Demei	Audrey Alfonso	Reeshell Takataro
Kamesak Sakaziro	Herson Soaladaob	Marc "Sechou" Rengil
Obak Beches	Masubed Kazuma	Daudeil Oingerang
Leah Moses	Keith Wasisang	Kerik Abraham
Cain Beketaut	Canetti Marbou	Analiza Ililau
Carlee Soaladaob	Everson Sengebau	Johanny Kurihara
Gianotti Jiro	Weldon Gideon	Latifa Ngotel
Dizon Sbal	Valena Joseph	

Australian Development Scholarship Now Available at the Cont. Ed. Office

The Continuing Education office announces to the public that the Australian Agency for International Development (AusAID) is offering and Australian Development Scholarship (ADS) and Australian Regional Development Scholarship (ARDS) to any individual who is interested in continuing his/her education in Australia or Oceania.

Eligibility Requirements:

- Proof of Citizenship (Federated States of Micronesia, Republic of the Marshall Islands, Republic of Palau.
- Must be between 18-40 years of age on January 1 in the year of the application.
- Residence in-country.
- Evidence of high academic merit- a first degree from a recognized institution for post graduate study.

Priority Study Programs for AUSAID Scholarship include:

- Accounting
- Agri-Business
- Commerce
- Economics
- Educational Administration
- Environmental/Resource Mgmt.
- Finance
- Information Mgmt.
- Information System Mgmt.
- International Relations
- Land Mgmt.
- Legal and Justice Studies
- Medical Laboratory Technology
- Medical: Postgraduate: District Practice
- Nursing
- Nutrition and Dietetics
- Pharmacy Studies
- Population Studies and Demography
- Trade Skills:
 - Engineering
 - Waste Management

Graduate Record Examination (GRE) Testing Schedule

The Graduate Record Examination (GRE) will be administered on Saturday, March 2, 2002 at Palau Community College in Room #51. Interested individuals can call the PCC Student Life Office at 488-3036 for registration information and fees.

RETENTION WEB PAGE

by: L. Adachi, PCC Retention Office, Tel.#: 488-2471, ext. 247

Education's worth it!

A college education is one of the most durable and worthwhile investment you can make. It's also one of the safest investment possible. When you are clear about what you want, education is usually a way to get it.

Education is a unique purchase. It is one of the few things you can buy that will last you a lifetime. It doesn't rust, corrode, break down, or wear out. Education cannot be stolen, burned, repossessed, or destroyed. Education is a purchase that becomes a permanent part of you. Once you have it, no one can take it away.

Student Survival Tips:

Studying is more than just a way to get grades, it is a way to grow and develop as a person and become a contributing member of society. However, there are several things you must do to become a successful student. Start by taking care of your health, eating properly, exercising, and getting the proper amount of rest. These things will help you to become a better and more effective student.

Good students attend class regularly. They are on time and pay attention to what the instructor has to say. Always let your instructor know ahead of time if you are going to miss a class. Call or email them...they will appreciate it. Make arrangements to get notes from them or a classmate.

Take advantage of extra credit opportunities. This demonstrates you care about your grade and want to do good. Successful students speak in class and participate in class discussions. Remember, there are NO dumb questions as others may have the same questions.

Check with your instructors about grades, clarifying discussion points, and important upcoming dates. Turn in assignments on time and remember to produce a product you are proud of. Don't just do it to get it done.

Be attentive in class. Don't talk, read, sleep, stare out the window, or let your mind drift. Although this is difficult, especially during those boring lectures, but you will be much better off later having been attentive in class.

Complete your work and DON'T LEAVE BLANKS ON TESTS. Guess if you are not sure, go for partial credit. Stay on top of your assignments and know when tests and pertinent dates are during the term.

Seek help when needed. If you need help with a problem set or an assignment, don't dealy and contact your instructor right away. The project beacon also has available tutors that can help.

Have fun learning and trying new things. Your time at PCC is brief so take advantage of the expansive academic offerings. Spend time looking through the course of study and make a "wish list" of all the interesting courses you would like to take.

Develop a positive learning attitude. Though you may have had an "I know everything" attitude in high school, college is an ideal place to remind yourself that there's always room for growth.

Remember, the PCC experience is unlike anything you have experienced before so take advantage of every opportunity available to you. Never be afraid to ask questions. Learning how to prioritize and manage your time well is key to your adjustment and continued success.

Academic Calendar Spring Semester 2002

February 15 (Friday)	Early Warning Progress Report
February 22 (Friday)	Last Day to Remove Fall 2001 Incompletes
March 4-8 (Mon.-Fri.)	Mid-Term Period
March 15 (Friday)	Holiday: Youth Day
March 18 (Monday)	Last Day for all Withdrawals
March 18-22 (Mon.- Fri.)	Spring Break
March 29 (Friday)	Holiday: Good Friday
April 2 (Tuesday)	PCC Charter Day
April 5 (Friday)	PCC Charter Day Celebration
May 6 (Monday)	Holiday: Senior Citizen's Day
May 10 (Friday)	Last Day of Instruction
May 13-15 (Mon.-Wed.)	Final Examination Period
May 17 (Friday)	Grades Due
May 24 (Friday)	Commencement Exercise

PCC Library Hours:

Monday - Friday: 8:00 a.m. - 8:00 p.m.
 Saturday: 9:00 a.m. - 6:00 p.m.
 Sunday: 12 noon - 6:00 p.m.

For books inquiries and other information, please call 488-3540 and talk to one of the friendly library staff.