

Alumni Notes

Class of 2000 (PCC)

Uelbil P. Michael -



2000 PCC graduate with an Associate of Science (AS) degree in Agricultural Science (AGS). Michael works at the Bureau of Agriculture Office as a Grant Coordinator. She has been working there for the past 6 years.

Class of 1998 (PCC)

Galbraith Gabriel -



1998 PCC graduate with a Certificate of Achievement (CA) in Business Accounting (BEA). Gabriel works as a GIS Technician at the Ministry of Resources & Development Palau's Office. He has been working there for the past 6 years.

Class of 1977 (MOC)

Steven Sebalt -



1977 MOC graduate with a Vocational Certificate of Achievement (VCA) in Masonry (MAS). He works at Public Works-Wastewater Treatment Plant as a Technician 2. He has been working there for the past 16 years.

Alumni Notes showcases MOC & PCC alumni who contribute to the quality of life in their local community and are positive role models for other PCC students to emulate. If you are that alumni or know someone who is, please contact the PCC Development Office at telephone number 488-2471. We would like to feature you in future issues of the *Mesekiu's News*.



Mesekiu's News

Palau Community College
P.O. Box 9, Koror, Palau 96940

Celebrating Birthdays

Vernice Yuji	February 02
McQuay Postol	February 04
Lester Rekemesik	February 07
Elenita Brel	February 08
Karen Miovas	February 08

Happy Birthday To You!

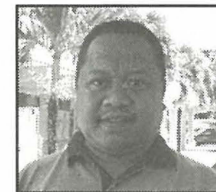
More Show Support to PCC Endowment Fund



Bevan Stephanus



Celestino Malsol



Gillian Tellames, Jr.



Risaburo T. Kyota

Koror Elementary School Teacher, Bevan Stephanus, PNCC Employees, Celestino Malsol and Gillian Tellames, Jr., Ministry of Justice Patrol Officer, Risaburo T. Kyota, Judiciary- Clerk of Courts Employee, Martha Iskawa (not pictured), and Ministry of State- Bureau of Domestic Affairs Employee, Marina I. Udui (not pictured) are the newest members of the Endowment Fund. PCC welcomes the new supporters of the Endowment Fund and invites others who have not signed up to show their support as well. For more information about the PCC Endowment Fund, please contact Hulda, Dilubch, Charlene, or Koyungil at the Development office at 488-2470 ext. 253.

(continued from page 3)

PCC Defeats Ngerbeches via Mercy Rule, 27-7

For the second game in a row, Mesekiu's offense, combined with the opposition's miscues resulted in a lopsided victory, a 27-7 mercy rule in favor of Mesekiu. Defensively, Jason Monkeya started on the mound and pitched 2 innings while Kaleb Dulei pitched three innings of the five-inning contest. Offensively, Mesekiu once again displayed the potency of its offense with each players reaching base safely and scoring, almost at will. Leading the attack was Sureor Ngirailemesang who drove in 5 runs on a double, a triple and a 2-run homer; Ty Saiske who scored 4 times with a pair of singles, a double and 3 RBIs; Dekei Ngiramengior who also scored 4 times and drove in 2 RBIs; Omsuul Yalap scored 4 times with 2 RBIs and Caleb Meltel with a 3-run homer. Also contributing in the offense was Olkeriil Yaoch with a single and a double, and singles each for Nena George and D. Etitel Mad.

In the third inning, Mesekiu sent a record-breaking 18 batters to the plate and scored 12 runs highlighted by Sureor's homer deep over the left field fence. Not to be outdone, in the following inning, the team's other lefty Caleb Meltel sent a 1-1 fastball over the same left field fence for a 3-run homer. In their last two outings, the Mesekiu team scored a total of 51 runs while allowing their opponents 10 runs.

The baseball team thanks their fans, especially Dean Marensia Edward and basketball coach Hamilton Maech and his team for their support.

Scholarship Checks Available Now!

All Palau National Scholarship checks are now ready for pick-up at the PNSB office next to Palau High School. For more information, please call 488-3608.

2007 Ngerulmud Half Marathon (Walk & Run)

Saturday, February 10, 2007

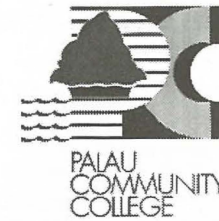
Time: Afternoon, 4pm @ Capitol

Event: 5km up to 10 miles (Walk or Run)- Individual Choice

Pick-up: 1-2:30pm @ PCC Parking Lot - Pick up Participants to Ngerulmud

Highlight: Tour of Capitol, Giveaways, & Refreshments

Call PNOC now at 488-4367 and Register for free.



Friday, February 02, 2007

Weekly Newsletter

Volume 9, Issue 5

Palau Community College

FREE COPY

MESEKIU'S NEWS

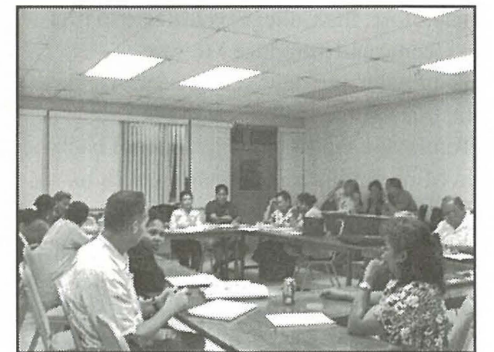


SDSU Professor Dr. Guillermo Conducts MA Courses



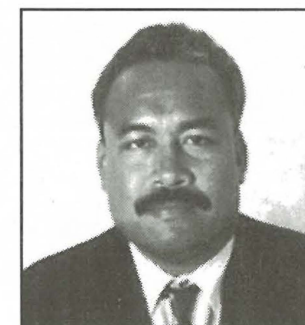
San Diego State University (SDSU) Professor, Dr. Mari Guillermo

Dr. Mari Guillermo, a professor from San Diego State University (SDSU), was in Palau from January 21st to 27th to conduct another course for the master's program on PCC campus. This was the first time that Dr. Guillermo traveled to Palau. She was here to teach ARP 747-Educational Leadership in a Diverse Society. This is the 5th of the 10 course requirements for the current PCC/SDSU Master's (MA) cohort program. There are 22 students in the current MA Program who attended the class on PCC campus from 6:30pm-8:30pm during the week of January 22nd-26th. The next course is scheduled to start on March 30th. The PCC/SDSU MA cohort program is still on schedule to be completed by December 2007.



PCC/SDSU MA students during their first class with Dr. Guillermo at CE Training Room last week. Some of the students are PCC faculty and staff, Ministry of Education employees, private schools' employees, and a business woman.

President Attends Islands of Opportunity Alliance Inaugural Meeting



President Dr. Patrick U. Tellei

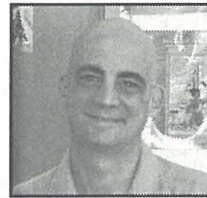
Since becoming a member of the Islands of Opportunity Alliance Board of Directors, President attended his first inaugural meeting beginning of this week at Honolulu, Hawaii. The Islands of Opportunity Alliance is a consortium of 17 universities and colleges, both public and private throughout the Pacific Basin

committed to increasing the number of minority students entering scientific, technological, engineering, and mathematical (STEM) professions. Alliance members include: UH Hilo, UH Manoa, UH Community Colleges, Chaminade University, University of Guam, Hawai'i Pacific University, American Samoa Community College, Guam Community College, College of the Marshall Islands, Northern Marianas College, and Palau Community College. The Alliance is being funded by the National Science Foundation's Louis Stokes Alliances for Minority Participation (LSAMP) program, which has established 35 alliances with more than 450 participating institutions throughout the country, with the Islands of Opportunity Alliance being the newest addition.

Endowment Donors Fill Your Forms!

All bi-weekly donors to the PCC Endowment Fund are reminded to come to PCC Development Office and complete their application packets, enabling them to get refunds for their donations. This reminder is for those who have not completed their packets. When your refund has been released, PCC will contact you and your refund may be picked up at the College. Refund checks will take approximately two weeks to be processed. Remember, the sooner we file your application, the sooner you receive your refund! If you are not sure whether or not your application packet is complete, please feel free to contact Hulda, Dilubch, Charlene, or Koyungil at PCC's Development Office at 488-2470/2471 ext. 253.

PCC Welcomes Three New Faces to the College Faculty!



Instructor Eric Tomlinson



Instructor Kiblai Suzuki

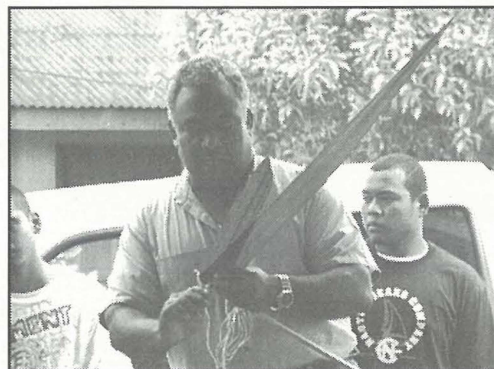


Instructor Maho Miyashita

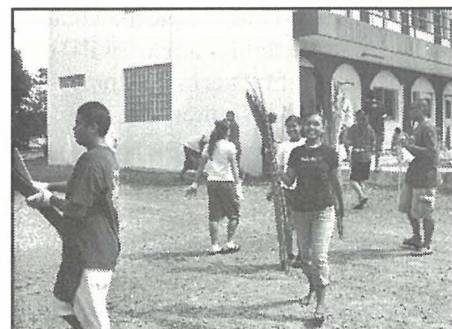
As we enter the New Year and a new Spring Semester, there are new beginnings, new changes, and new faces. Therefore, the College would like to first welcome and introduce Mr. Eric Tomlinson, our new Science and Algebra Instructor from Minnesota. Mr. Tomlinson taught in a high school back in Minneapolis before coming back to Palau. Yes, this is his second time to come to Palau, though this time, he came to teach, not dive. Another new instructor is Ms. Kiblai Suzuki, a Criminal Justice and Computer Literacy Instructor. Ms. Suzuki worked in California as a Data Entry Clerk for Medical Claims before coming back to Palau. Another new instructor is Ms.

Maho Miyashita, a JICA Volunteer teaching Animal Husbandry. Ms. Miyashita worked in a Cattle Dairy Farm before coming to Palau. In order for PCC to maintain its quality of excellence, the College prides itself in hiring the best talent Palau has to offer. We are confident that our new employees exemplify this quality and will be valuable assets in the College's effort to provide the best services to our students. The College is proud to have these special individuals join the PCC team, and we are positive that they will make a significant contribution to the growth and development of our College for many years to come. Welcome aboard!

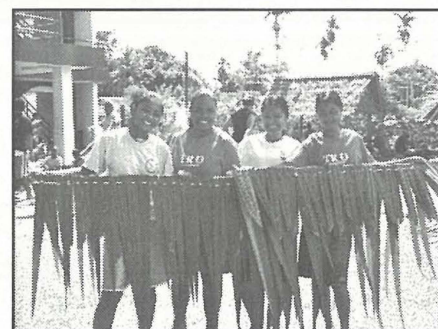
UB Students Help Repair MHS Summerhouse



President Tellei demonstrating to the Upward Bound students the proper methods & techniques of preparing nipa palm leaves to be used as a roofing for a traditional summerhouse at Mindszenty High School (MHS).



UB students first started by gathering nipa leaves.

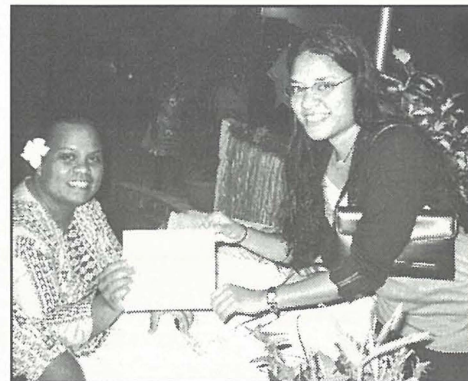


UB girls showing off their end product.

PICRC Celebrates its 6th Anniversary

A couple of weeks ago, Palau International Coral Reef Center (PICRC) held a banquet to raise funds for the coral reef center. The \$25 dollars per plate dinner was held on the grounds of the coral reef center and raised over \$18,000 dollars.

Attended by the PICRC Board of Directors (BOD) and Ministers, the banquet gala's major sponsors were Shimbros International Inc., Palau Pacific Resort, Emamelei Restaurant, Airai View Hotel, and Roll'em Productions. Members of the diplomatic corp also graced the occasion together with representatives from various donor companies and non-profit organizations that have supported PICRC since its establishment six years ago. PCC officials were also in attendance.



(l-r): PICRC Education Officer, Tublai Ililau, receiving a PCC donation from the College PR Manager, Koyungil Kebekol.



(l-r): Director Kuye Belelai, Dormitory Manager Ephraim Ngirachitei, Instructor Sherry Ngirmeriil, VP Thomas Taro, and Dean Alvina Timarong representing PCC at the banquet.

BITS AND PIECES...

ANNOUNCEMENT

Attention all PCC Students & Staff...

The Health Information Resource Center on HIV/STI and AIDS has recently opened right here at PCC Campus so, do not hesitate to stop by and visit.

Located: 1st floor of Ewatel Building

Open: Monday- Friday, from 1:00pm- 5:00pm, starting from February 05, 2007.

For more information, please do not hesitate to contact Allyne Andrew at 488- 1757.

ANNOUNCEMENT

Video Production Training Offered...

PCC Continuing Education is offering a noncredit, short-term training on video production to anyone who is interested to learn. Registration is open until at least ten people sign up. Detailed schedule will be decided after enough participants sign up. The same course will be offered for credit this coming summer. For more information and registration regarding this opportunity, please contact Taruu or Leona at PCC CE at 488-6223.

ANNOUNCEMENT

Attention 5th to 8th Graders...

The Art Class on Water Color for 5th to 8th graders, which was supposed to start on February 03, 2007 has been postponed to March 03, 2007. For more information, please contact Taruu Nakamura or Leona Blaluk at 488-6223.

Environmental/ Marine Science Scholarship

Applications are still being accepted for the Environmental/ Marine Science Program Scholarship. Application are available at the Development Office for those interested. This scholarship program is for citizens of Palau and the Freely Associated States. The following are the criteria for student applicants:

High School Student Applicant

- Must be a high school graduating senior
- Must have a minimum cumulative GPA of 2.50
- Have been accepted to Palau Community College
- Must have TOEFL score

PCC Student Applicant

- Full-time student
- Enrolled in Environmental/ Marine Science Program
- Have a minimum GPA of 2.5

Other Student Applicants (Undergraduate)

- Currently enrolled as full-time student in an accredited or recognized post- secondary institution
- Have a cumulative minimum GPA of 2.5
- Provide current college transcript
- Maintain full-time status

Other Student Applicants (graduate)

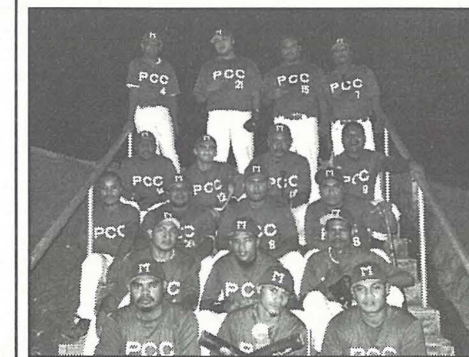
- Currently enrolled as full-time student in an accredited or recognized post-secondary institution
- Have a minimum cumulative GPA of 2.0
- Provide current college transcript
- Maintain full-time status

Supporting documents to be submitted with the application:

- Copy of Palau, FSM, or RMI Passport or notarized copy of birth certificate
- Copy of acceptance letter from PCC or other accredited or recognized post-secondary institutions
- Official school transcripts
- Copy of high school diploma (high school student applicants only)
- Copy of degree (graduate student applicants only)

All applicants are required to submit their completed application forms with supporting documents to the PCC Development office by Friday, February 9, 2007

Mesekiu on Scoring Rampage



2007 PCC Mesekiu Baseball Team

PCC Mesekiu 24; Koror 3

On Monday, January 22th, PCC Mesekiu baseball team overwhelmed the young Koror team with a 24-3 win. The entire Mesekiu roster saw play time as each of them reached base safely and scored. Credited for the win was veteran pitcher Kaleb Dulei, while Caleb Meltel earned a save. In 5 innings, Dulei struck-out 10 while allowing only 1 single.