



# MESEKIU'S NEWS



Friday, January 30, 2009

Weekly Newsletter

Volume 11, Issue 5

## MoA Signed for T&H School of Excellence



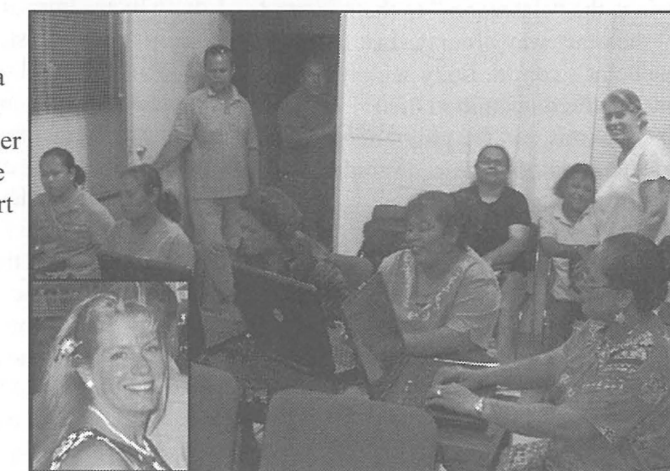
(seated l-r) Palau President Johnson Toribiong, Belau Tourism Association President Dr. Minoru Ueki, Ministry of Education Emery Wenty, PCC Chairperson of the Board of Trustees Bilung Gloria G. Sali and PCC President Dr. Patrick U. Tellei after signing the Memorandum of Agreement for the new T&H School of Excellence.

Palau Community College, the Ministry of Education, and Belau Tourism Association signed a Memorandum of Agreement yesterday to signify their shared vision

and commitment to support the establishment of a Palau Tourism & Hospitality School of Excellence for the future of Palau's Tourism and Hospitality industry.

## SDSU's Lally Launches New Cohorts

San Diego State University (SDSU) professor Dr. Theresa Lally is back in Palau again, and this time her focus will not only be on the master's cohort as was the case in previous visits, but will actually be dual-pronged as she simultaneously launches the first courses for the new master as well as the bachelor's cohort.



Professor Theresa Lally (standing-right) of San Diego State University (SDSU) monitors her students as they upload their assignments on-line. (inset) File photo of Dr. Lally from the SDSU distance learning website.

Trying to make the most of the visit, Lally this time is teaching not one but four courses- one at the master's level and three (3) at the bachelor's. She said that she has three weeks to get all students in both cohorts

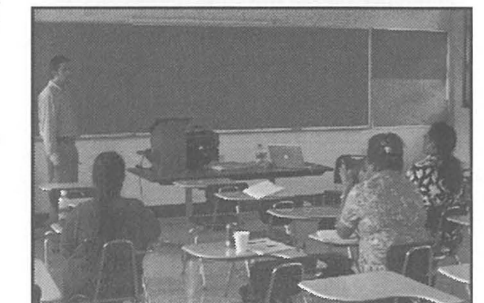
started, and agrees that it is a lot of work especially for the BA students who are taking three courses, with one accelerated course which must be

**See SDSU on Page 2**

The signing of the MoA also marked the official beginning of a fund-raising campaign by the three entities that aims to raise \$750,000 to build the Palau Tourism & Hospitality School of Excellence on the grounds of Palau Commu-

**See Excellence on Page 2**

## Consultant Holds SLO Seminar



Dr. Kenneth Gonzalez shares his SLO knowledge with Dean of Students Marensia Edward (2nd-right) and staff.

A professor from the University of San Diego (USD) on an 8 month sabbatical was invited to conduct a seminar specific to improving Student Learning Outcome (SLO) at PCC. Dr. Kenneth Gonzalez was on campus this week to hold the seminar to college personnel about the effective institutional planning and processes that results in SLOs. Gonzalez was able to meet with the President Tellei, Vice Presidents Olegeriil and Taro and all department heads, including student leaders to talk about their individual roles and responsibilities in the on-going self-study work on accreditation and how it all must lead to real and measurable SLO's. After wrapping up his training on Thursday, Gonzales said that from the feedback he received, PCC's self-study effort to meet SLO requirements is a positive step and PCC should look forward to the commission's visit in 2010.

### Alumni Notes

#### Class of 2004(PCC)

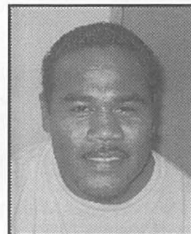
Tsungiko Renguul -



2004 PCC double major graduate with an Associate of Science (AS) degree in Elementary Ed and Special Education. Renguul works at Meyuns Elementary School as a Special Education Resource Teacher.

#### Class of 1996 (PCC)

Brent Melairei -



1996 PCC graduate with a Certificate of Achievement (CA) in Construction Technology (CT). Melairei works at Palau High School as a Physical Education Teacher.

#### Class of 1983 (MOC)

Margaret Renguul -



1983 MOC graduate with a Certificate of Achievement (CA) in General Office Clerk (GOC). Renguul works for one of the most prominent family-owned restaurants on island, Yokohama Restaurant. She has been in the restaurant business for over 16 years.

**Alumni Notes** showcases MOC&PCC alumni who contribute to the quality of life in their local community and are positive role models for other PCC students to emulate. If you are that alumni or know someone who is, please contact the PCC Development Office at telephone number 488-2471. We would like to feature you in future issues of the *Mesekiu's News*.

**Mesekiu's News**  
Palau Community College  
P.O. Box 9, Koror, Palau 96940

### Celebrating Birthdays

Epi Moses	January 28
Winfred Recheungel	January 28
Nino Pate	January 30



**Happy Birthday To You!**

## Development Office Disburses Refunds, Processes New Applications, and Enrolls New Members

Despite the current economic crisis which has greatly impacted our local economy and driven up the price of most consumer goods, PCC is grateful for the support it continues to receive for the Endowment Fund from the government & non-government employees who give on a bi-weekly basis through payroll allotments.

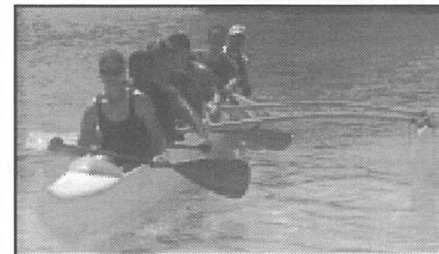
This week, new member **Lillian Milong-Iwetechong from Koror State Government** enrolled in the program. Current members **Della Mobel and Serafin Akiwo from Ministry of Resources & Development and Ministry of Justice** respectively opted to **increase their allotments**. Welcome aboard to Lillian and thanks to Della and Serafin for the additional support!

The Development Office is continuing to process new refund applications, all the while disbursing refund checks as they become available. If you have not filed your refund application yet, stop by the Development Office so we may help you. Don't forget to bring the following:

- ✓ Check stub #27 or Wages & Tax Form
- ✓ Receipts from Red Cross, PICRC, & tuition.

Want to find out how you can join the hundreds who are already giving to the Endowment Fund, please contact Armstrong, Dilubch, or Nino at the PCC Development Office at 488-2471, ext. 253.

## Mesekiu Canoe Racers Declares Open Season on Membership



Can you swim? If you answered yes, you might just be the person the Mesekiu Team is looking for. The team is currently forming racing teams to train for local and regional competitions. No experience necessary, free professional training provided. Contact Elizabeth deJong at extension 241 for details. Pictured above are some of the Mesekiu Team paddlers during a recent competition.

## Associate Dean Daniels to Head Voc.Tech. Ed. Week Organizing Committee

Associate Dean of Technical Education Sherman Daniel has been appointed by President Tellei to spearhead the organizing body to plan for the upcoming Vocational/Technical Education Awareness Week. The first meeting for Daniel and his committee is scheduled for 4 pm today at the auto-mechanics classroom. Anyone interested in assisting with the committee is asked to contact Sherman Daniel at telephone number 488-6504.

*Mesekiu's News* thanks all contributing writers for their articles and pictures. Too busy to write, call us, we'll come to you. Call the Development Office at ext.253. Thanks again!!!

## Excellence, from Front Page

nity College. ROP President Johnson Toribiong, joined Belau Tourism Association President Dr. Minoru Ueki, Ministry of Education Director Emory Wenty, PCC Chairperson of the Board of Trustees Bilung Gloria G. Salii, and PCC President Dr. Patrick U. Tellei in signing the MoA yesterday at the site of the proposed school. Witnessing the signing ceremony were representatives from different hotels in Palau, members of the Belau Tourism Association, PCC faculty members, Ministry of Education officials, Palau Visitors Authority staff, and members of the Palau Chamber of Commerce. One of the biggest hotel in Palau (Palau Pacific Resort) and BTA each pledged \$10,000 to the fund-raising, and a number of other local sponsors also pledged support.



PCC Tourism & Hospitality instructor Vicky Maui (foreground) and other guests at the ceremony yesterday.



PCC Tourism & Hospitality stand ready to usher arriving guests at yesterday's ceremony.

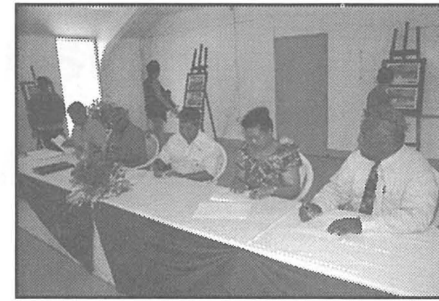
## SDSU, from Front Page

completed in the three weeks she is here. The other two including the master's class she said, will follow the standard course timeline where she'll continue instructions from San Diego on-line via email or discussion board. "It is a tough schedule to say the least, considering the students in most cases are themselves full-time teachers with family obligations, but I'm confident that with the help of the facilitators and the peer support system in place, everyone should make it, just like the ones before them did," Lally added.

Looking at the number of BA & MA graduates the distance learning program has produced since its inception in early 2000, the success rate is indeed high. Forty (40) have received their master's degree and (31) thirty-one their bachelor's.

Lally attributes the high rate of success with the program's facilitated model. A concept in which the instructor develops and tailors a course specific to the recipient group or demographic, then visits site to launch the course. After which, the instructor will work through an on-site facilitator to ensure quality learning experience transpires for the students.

The SDSU-PCC distance learning program has quickly gained popularity among local teachers keen on obtaining their BA or MA degrees because it brings the "classroom" to them instead of the other way around. Just in the bachelor's cohort, Lally said that about one hundred submitted their applications, but the program could only accommodate at a time, 33 students.



PCC President Tellei(r) signs the MoA with PCC Board Chairperson Bilung Gloria G. Salii, MOE Director Wenty, BTA President Dr. Ueki, and ROP President Johnson Toribiong.



Two ranking officials from the Republic of the Marshall Island's (RMI) Department of Education were on campus this week for rounds of meetings with President Tellei and other college officials regarding the status of the Marshallese students enrolled at Palau Community College. Allison J. Nashion, RMI Assistant Secretary of Secondary & Vocational Education and Hiram Malolo, RMI Assistant Secretary of Education in their meeting with Tellei and other PCC officials said that they wanted to see first hand how the Marshallese students were coping with their studies and their daily lives. Impressed by how most of the Marshallese students are doing academically and socially, the two agreed that some are still adjusting to life away from home. Students from the Marshall Islands, of all the other Micronesian students at PCC indeed have to travel the farthest to come to Palau, and given the distance and travel cost, few go home during breaks and holidays. Nashion said he has learned a lot from the visit and would make a proposal to the RMI government that such visits occur on a regular basis. "I hopes this visit encourages our students to succeed in their studies and return home to contribute in the development of their island country," he said.

There are twenty-four students from RMI currently attending Palau Community College.

## RMI Education Officials Visit College



(pictured left) Seated l-r: Deikola Olikong, Director of Student Life; Lesley Adachi, Registrar; Marenia Edward, Dean of Students; Dahlia Katosang, Director of Admissions & Financial Aid; Standing l-r: Jay Olegeriil, Vice President of Administration & Finance; Dr. Patrick U. Tellei, President; Allison Nashion, RMI Assistant Secretary of Secondary & Vocational Education; and Hiram Malolo, RMI Assistant Secretary of Education.

## BITS AND PIECES...

### Charter Day

## 2009 Charter Day Set for April 3rd...

The Organizing Committee appointed by President Tellei to plan for the 16th Annual PCC Charter Day has begun planning and preparation for the special day. During its initial meeting on January 23rd, the committee discussed possible activities for the day. They also talked about the make up of subcommittees to make sure that they are representative of a cross-section of the College community. Tellei, in his appointment memo also specifically asked the committee to focus planning and activities on the ongoing College Self-Study and Evaluation. The committee is set to meet again on February 17, 2009.

### Volunteer

## New JICA Volunteer at PCC...

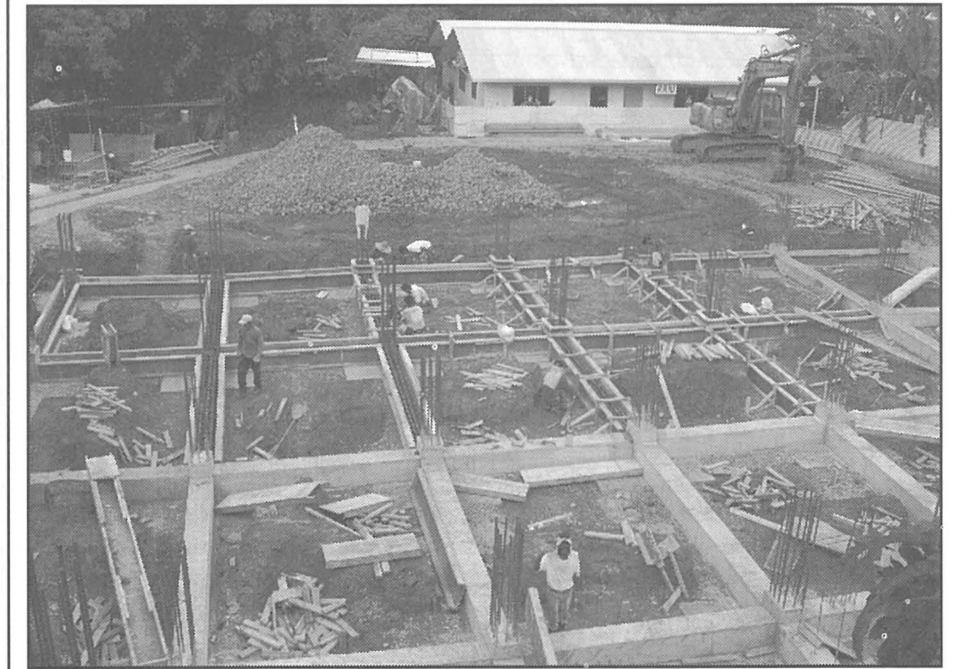
Toshihiro Kugimiya, a senior volunteer with the Japan International Cooperation Agency (JICA) has been assigned to work with the PCC Cooperative Research & Extension department. On a two year assignment, Kugimiya will be sharing his expertise in tissue culture, train counterparts on lab procedures, develop growth mediums, and conduct proper management and operation of a tissue culture laboratory. PCC welcomes aboard Mr. Kugimiya.

### Celebration

## Students to Celebrate International Night...

The Associated Students of Palau Community College (ASPC) will celebrate International Night this Saturday at the PCC cafeteria. Student organizers say song and dance will be performed by students from each country (Marshalls, Yap, Chuuk, Pohnpei, Kosrae, and Palau) represented in the ASPCC. Admission is free to PCC employees, students, and the general public.

## Library Construction On Track



NECO construction workers and heavy equipment working on the robust foundation of the three-level building which will be the new PCC library. Concrete mixture for the building was tested at over 3,000 psi.

Despite the sporadic heavy downpours and a water main break only weeks into the start of the construction last month, work on the new three-story PCC Library is on schedule according to PCC Structural Engineer Chester Lelis who designed the building. Located next to the Btaches classroom complex, the new library will sit on an area previously occupied by the agriculture program farm/laboratory.

Lelis said that with the heavy excavation work completed, they are now moving



Ground-breaking ceremony for the new PCC Library was held on Dec.16, 2008. Shallum Etipson(r) represented the Contractor NECO Construction at the Ground-breaking ceremony above. President Tellei, Vice Presidents Taro and Olegeriil along with library staff represented the school. Dubbed by President Tellei as probably the least expensive Ground-breaking ever held in Palau, the ceremony required only two shovels(one for contractor & one for client-PCC) and two 5-gallon buckets of sand. The billboard sign was constructed from recycled wood.

along with the foundation work. "We have laid the footing and are now wrapping-up work on the footing tie beams," he said. "We are pouring the ground floor slabs next and hope to be able to get to the main columns as well as the retaining wall by the second week of February.

Working closely with the project manager Mr. Shao of contractor NECO Construction, Lelis represents the interest of PCC, monitoring work progressing and ensuring that specs are followed and costs justifiable.

Pleased so far with the progress of work, Lelis predicts that work on the three-level structure with a floor space of over 20,000 thousand square feet and a price tag of \$962, 540 dollars should wrap up in September of this year as initially planned.

*Mesektu's News* thanks all contributing writers for their articles and pictures. We depend on you to tell us all about the exciting programs and activities you are undertaking to make our College great. Too busy to write, call us, we'll come to you. Call the Development Office at ext.253. Thanks again!!!