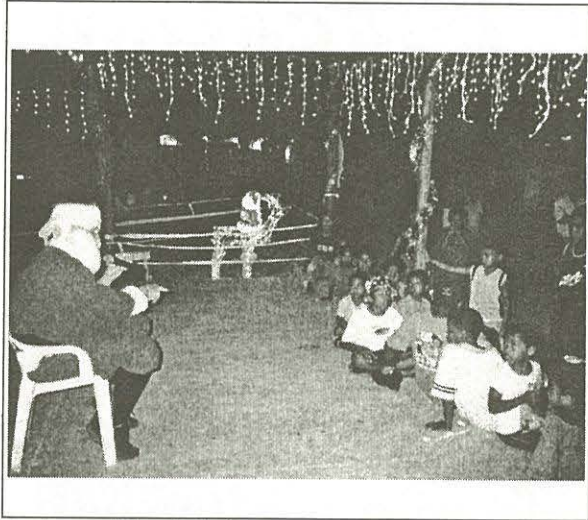


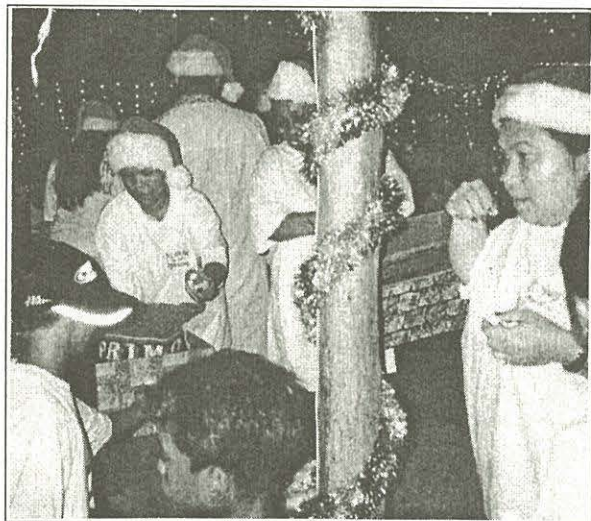
**PCC Staff Play Santa in "Bethlehem"  
Give Best Candies to Kids!**



Tourism and Hospitality instructor, Eric Carlson played Santa. The kids loved his singing! Our Santa can sing!



Howie's music class got great reviews from the crowd.



Santa's elves busy at work.



Todd and Shinoy about to be swept away in a sea of kids.



Santa's elves came from the library, the business office and the development office. Thank you elves and see you all again next christmas.

**Mesekiu's News**  
Palau Community College  
P.O. Box 9  
Koror, Palau 96940



Palau Community College

**MESEKIU'S  
NEWS**

**FREE COPY**



Friday, December 21, 2001

Weekly Newsletter

Volume 3, Issue 50

**Season's Greetings!**



*President Patrick U. Tellei,  
on behalf of the Board of Trustees, Administration,  
Faculty, Staff, and most especially the Students  
of Palau Community College,  
takes this opportunity to wish everyone  
A Very Merry Christmas and Happy New Year  
filled with Joy and Many Blessings!*

As always, Palau Community College stands ready and willing to provide for your education and training needs.

**SPRING 2002 Registration Schedule:**

Registration for Continuing Students	-	January 7-9, 2002
Placement Testing	-	January 7-9, 2002
Orientation Activities	-	January 10, 2002
Academic Advising & Registration (New, Re-admitted, & Returning Students)	-	January 10, 2002
REGISTRATION DAY	-	January 11, 2002
First Day of Instruction	-	January 14, 2002
Late Registration/Drop & Add Period	-	January 14-18, 2002

If you are interested in taking classes at Palau Community College, please call the Office of Admissions and Financial Aid at telephone (680) 488-2470/2471, extension 234 or e-mail to [admsfaid@belau.org](mailto:admsfaid@belau.org). Or, stop by the campus and see one of our friendly staff at Admissions Office for assistance!

*Accredited by Western Association of Schools and Colleges*

## REGISTRATION INFORMATION SPRING 2002

### Registration for Continuing Students begins on January 7-9, 2002 (M-W)

Only continuing students may be registered on January 7-9, 2002 (M-W). Registration for returning, readmitted, and new students will begin on January 10, 2002. The registration will be done in ALPHABETICAL ORDER as follows:

1. Students whose last names begin with letter A -- M will register beginning at 9:00 - 11:00 am on January 7-9, 2002.
2. Students whose last names begin with letter N -- Z will register beginning at 1:00 - 4:00 pm on January 7-9, 2002.

All continuing students who miss the above schedule will register during the **REGISTRATION DAY** on, January 11, 2002, as follows:

1. Students whose last names begin with letter A - M will register beginning at 9:00 - 11:00 am on January 11, 2002.
2. Students whose last names begin with letter N - Z will register beginning at 1:00 - 4:00 pm on January 11, 2002.

The following steps will be followed in order to register for classes:

- |        |   |
|--------|---|
| Step 1 | Obtain Financial Aid Clearance at the Office of Admissions & Financial Aid  |
| Step 2 | Pay \$50.00 (tuition deposit) and obtain your Clearance at the Business Office  |
| Step 3 | Present your Clearance at the Office of Admissions & Financial Aid & pick-up your Registration Packet                             |
| Step 4 | Meet with your academic advisor for program planning and advising   |
| Step 5 | Complete your Registration Worksheet with your academic advisor   |
| Step 6 | Submit your completed Registration Worksheet to the Office of Admissions & Financial Aid.   |
| Step 7 | The Office of Admissions & Financial Aid will process your registration and provide you with the Official Student Class Schedule. |

### CHANGES (ADDS & DROPS) OF REGISTRATION FOR ALL CONTINUING STUDENTS begins on January 9, 2002

Students may add and/or drop classes starting on January 9, 2002 following the steps indicated below. Classes dropped during this drop and add period are not shown on the students' permanent record.

- Step 1 Pick up Drop/Add Form (free of charge) at the Office of Admissions & Financial Aid.
- Step 2 Complete the Drop & Add Form with your advisor and return the form to the Office of Admissions & Financial Aid for processing.

### **REGISTRATION DAY – January 11, 2002 (Friday)**

Students who have not registered will follow the procedures indicated above in order to register for classes.

### LATE REGISTRATION PERIOD – January 14-18, 2002 (M-F)

Pay \$10.00 late Registration Fee and the \$50.00 Tuition Deposit at the Business Office. Present the receipt(s) to the Office of Admissions & Financial Aid and pick up your Registration Packet and follow the steps outlined under above to register for class(es).

### DROP/ADD PERIOD – January 14-18, 2002 (M-F)

1. Consult with your academic advisor and obtain approval of the requested change.
2. Pay a fee of \$ 2.00 at the Business Office.
3. Present your receipt(s) at the Office of Admissions & Financial Aid and pick up a Drop & Add Form.
4. See your advisor for approval and signatures.
5. Return the Form to the Office of Admissions & Financial Aid and pick up your updated Student Class Schedule.

## **PCC Continuing Education Now Offers: STORYBOARD CARVING CLASS**

Students will learn the ancient Palauan art of carving beautiful storyboards from a master carver. Classes will only last six weeks and space is limited so call now to register.

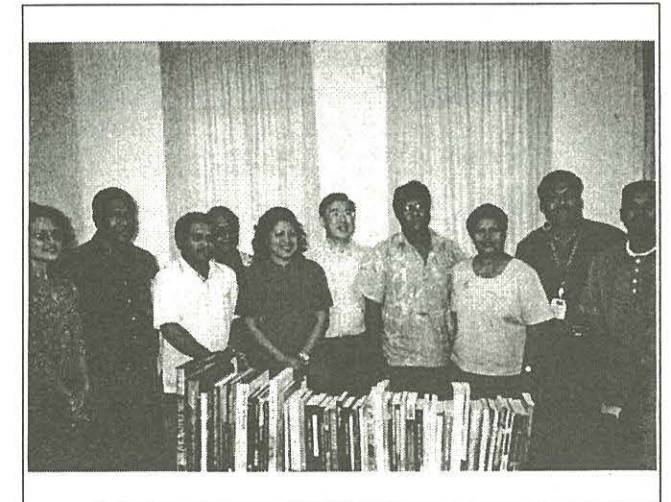
For detailed information, please call the PCC Continuing Education Office at telephone number 488-2471, ext. 237.

### **ROC-Taiwan Ambassador Donates Books to PCC Library**

The Republic of China-Taiwan, through its embassy here in the Republic of Palau recently donated over 50 books to the PCC Library. In a brief lunch-ceremony held in the PCC Boardroom, ROC-Taiwan ambassador Clark Chen presented the books to PCC President Tellei and the Board of Trustees.

Ambassador Chen in his remark to the president and the board member said that the books will hopefully help students and all library patrons learn more about Taiwan, thus, helping to strengthen the long term relationship between Taiwan and Palau.

ROC-Taiwan recently sponsored computer trainings for PCC staff in Taiwan and also donated in-kind during the 2000 PCC Charter Day. It also donated a round trip ticket to Taiwan as a raffle prize during PCC's Thanksgiving Endowment Fundraising. Currently, President Tellei is selecting two PCC staff who will be going to Taiwan for sporting/coaching clinic, all expenses paid by ROC-Taiwan.



ROC-Taiwan Ambassador Clark Chen (c), with the PCC leadership after the brief ceremony in which he presented the donation of books to the PCC Library.