

Alumni Notes

Class of 2004  
Heaster Hesus



Earned her Certificate of Achievement (CA) degree in Office Administration. She returned to Kayangel State where she was hired as a teacher for 1st grade - 8th grade teaching English, Math, Palauan and Special Ed. Message: Study hard and do your best.

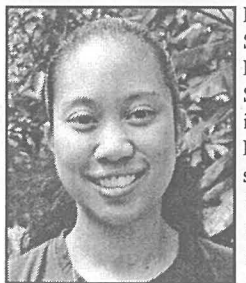
Class of 2008  
Teongel Ngirkelau



Earned her Associate of Science (AS) degree in Informtaion Technology. She worked at Student Life Office and transferred to the Registrar's Office where she is now working as a Registration & Records Specialist. Message: Be inspired and complete your education.

You will not regret it.

Class of 2010  
Nikita SM Adachi



Earned her Associate of Science (AS) degree in Environmental/Marine Science. Currently, she is working at Upward Bound as a tutor for all subjects. She is applying to 4 year colleges to continue her education in Biology/Biochemistry. Message: Do your best in school.

**Alumni Notes** showcases MOC & PCC alumni who are positive role models and contribute to the quality of life in their local communities. If you are that alumnus/alumna or know someone who is, please contact the PCC Development Office at telephone number 488-2471. We would like to feature you in future issues of the *Mesekiu's News*.

**Mesekiu's News**  
Palau Community College  
P.O. Box 9, Koror, Palau 96940

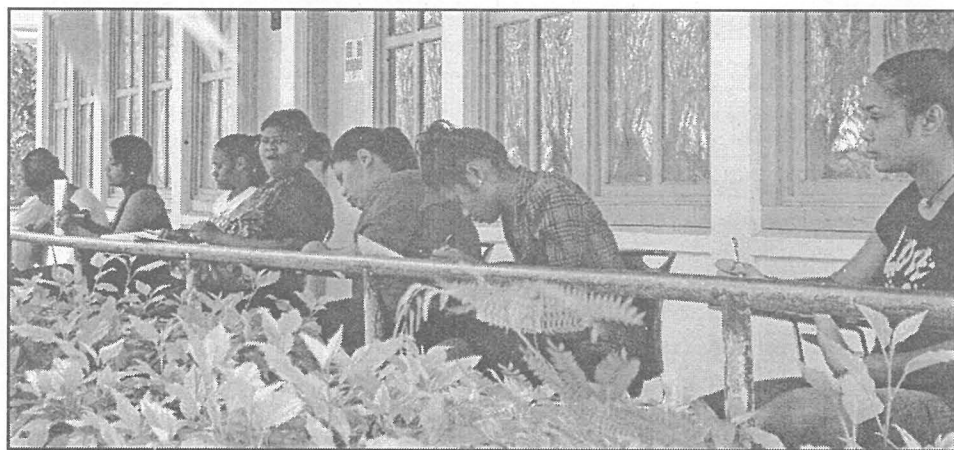
## Former Staff Donates to Endowment



Charley handing over his \$100.00 donation to Dilubch.

On December 14, 2011 Charley Lonno, who worked at PCC for about 20 years and left to join the military in 2006, returned to visit the campus. He was in Alaska for 3 years, and is now residing in Kansas City, Kansas. He is with the infantry, 11 Bravo. Asked about the purpose of coming back to Palau, he stated that this was home for 20 years, and he is back for a short vacation. He is also on his way back to his home island of Kosrae to see his father. Thank you for your generous donation, Charley.

## Undeterred by Power Outage



Students in Instructor Derbei Meyar's EN class elected to bring their desks outside the classroom and continue taking their test while the power was out!

### Vacancy Announcement

- (1) English Instructor, Learning Resource Center  
Salary range: \$14,802 - \$24,647 per annum
- (2) Math Instructor, Learning Resource Center  
Salary range: \$14,802 - \$24,647 per annum
- (3) Financial Aid Counselor, Adm. & Financial Aid Center  
Salary range: \$12,049 - \$20,607 per annum
- (4) Tracking & Data Coordinator, Talent Search  
Salary range: \$14,000 - \$18,000 per annum
- (5) Counselor, Student Life Office  
Salary range: \$12,650 - \$19,479 per annum
- (6) Career/Transfer Counselor, Learning Resource Center  
Salary range: \$17,300 - \$21,000 per annum
- (7) CHL Palau Outreach Educator  
Salary range: \$12,653 - \$19,479 per annum

For application forms and information, please contact Karen Mobil at PCC Human Resources Office at 488-2470/71, ext. 227.

PCC is an Equal Opportunity Employer

### PALAU BEACH BUNGALOWS Peace & Relaxation Palauan Style!

Only \$40+tax daily rate  
Private a/c bedroom&bath, living room, kitchenette  
Beachside on big island of Babeldaob  
Melekeok State  
30 minutes from Palau International Airport  
RESERVATIONS: 680.587.2533  
Swim, snorkel, jungle walks, cultural sites  
palaubeachbungalows@palau.net  
www.palauparadise.com

### Celebrating Birthdays

Hellen Imanuel Dec 29

Happy Birthday To You!

# FREE!!! Palau Community College



# MESEKIU'S NEWS



Friday, December 23, 2011

Weekly Newsletter

Volume 13, Issue 50

## ASPCC Joins the National Christmas Program



ASPCC students gather around Santa (Chris Batchelor) after passing out goodies to the children.

Every year, PCC participates in the Christmas program at Bethlehem Park sponsored by the Ministry of Community and Cultural Affairs (MCCA). This year, on December

14th, PCC once again was involved by providing a Santa and tons of goodies as gifts to the enthusiastic crowd of children of all Gifts continued on Page 2

## Career/Transfer Workshops & Job Site Visit

Contributed by Learning Resource Center



Sophomores in a photo op at Surangel & Son's Travel Agency.

In line with one of the focus of the AANAPI-SI Grant, which is Career/Transfer Counseling, related activities were conducted for Palau Community College is an accessible public educational institution helping to meet the technical, academic, cultural, social, and economic needs of students and communities by promoting learning opportunities and developing personal excellence.

prospective 2011-2012 graduates. The total 2011-2012 prospective graduates is seven- Career continued on Page 3

## Dorm Residents Hold Christmas Party

Every end of the semester, the dorm residents enjoy an activity that is fun filled and exciting. This semester, they had a Christmas party at the cafeteria on December 16, 2011. Many of the residents were in attendance as there were many delicious food, great live music and activities for them.

Thank you to Larson Silas for the wonderful live music, the cafeteria for the great food, and to the staff at Student Life, Recreation and Dorm for ensuring that the dorm residents had a great time and helped out with the clean up.



Dorm residents posing for a split second before continuing to dance the night away.

# ASPCC Thanksgiving Picnic & Volleyball Tournament



ASPCC members with Ms. Alissa Takesy(front center) of FSM National Government.

On December 03, 2011, the Associated Students of Palau Community College (ASPCC) held their Thanksgiving picnic at Long Island Park, with a volleyball tournament to bring out the competitive spirits of the students. ASPCC officers received cases of donated water and soda from Ms. Alissa Takesy of the FSM National Government for the students' activity. There were lots of food prepared by our own cafeteria, and the students had a great time. There were a number of teams that signed up for the

tournament. Winning the tournament was team Ok ReMix.

ASPCC would like to thank Ms. Alissa Takesy for the donation of drinks and to Rose Kohama for taking lots of pictures. Students are encouraged to come by the ASPCC office and meet your class representative, the ASPCC officers, and discuss your concerns or ideas. The ASPCC office is located on the 3rd floor of the Tan Siu Lin PCC Library. The phone number is 488-2659.

## Gifts continued from p.1

ages. Assisting the Santa to lift the spirit of the children were the ASPCC officers and students. In addition to contributing to boost the spirit of the season, students' participation teach them about civic responsibility.

A big Thank You to ASPCC students, Second Language Acquisition Advisor Christopher Batchelor and Yoshi Okabe for their assistance.



Santa with the children who were excited to sit on his lap.

# RPSO Fundraises

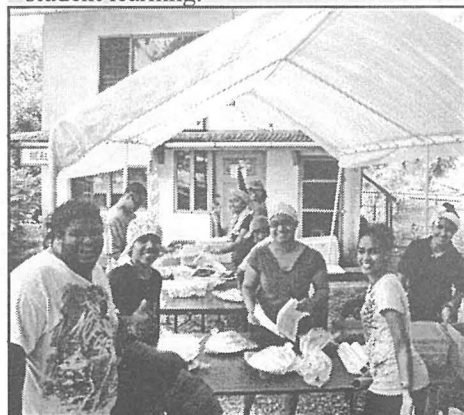
Contributed by Elsei Tellei

On December 15, 2011, Republic of Palau Student Organization (RPSO) held its first fundraising at Uchul a Miich and Lebuu Bai. Barbecue plates were sold for \$5.00 each. The PCC students, staff and members of the community helped RPSO by donating their time and money toward the event. RPSO would like to thank the following people for their contributions:

- President Patrick Tellei - \$88.00
- VP Jay Olegeriil - bought BBQ plates worth \$105.00
- VP Thomas Taro - Tent
- Supervisor Ezra Takeo - assisting with food prep and donation the use of cafeteria for food preparation
- Satoru Adachi - Event supervision, donated use of food handlers permit and RPSO members' lunch
- Elenita Brel - Event supervision & donated use of food handlers permit
- Rodson Sokau - \$20.00
- Mokirong Oiterong - half case of water
- Kornelia Thomas - half case of water
- Fenny Seklii - BBQ grill
- Nangisa Mai - macaroni salad
- Dante Rengiil - two coolers
- Desiree Seklii - 10 bottles of water & pastries
- Ashley Umetaro - \$5.00
- Isebong Rengulbai - \$5.00

\*Most of all, RPSO would like to thank everyone who supported through purchase of tickets and BBQ plates!

With everyone's help, we were able to raise \$745.22. Also, a special thanks to all the RPSO members and volunteers who donated their time to help make this fundraising event a success. The funds raised will be used to support student activities designed to contribute to student learning.



RPSO members assembling bbq plates.

## BITS AND PIECES...

### Messages of Condolences

*The College family expresses its sincere and deepest condolences to Deikola Olikong on the loss of her father, Rubasch Santos Olikong; to Vincent Ito on the loss of his sister Ruth Mary Udui; and to Sharlene Skebong, on the loss of her father Tadayoshi Skebong.*

*Our thoughts and prayers are with you and your family during your most difficult time of sorrow and grief.*

### MESSAGE



**PCC WISHES YOU ALL  
A SAFE AND FESTIVE  
HOLIDAY SEASON.**



### NO PARKING ZONE

#### ATTENTION ALL STUDENTS, FACULTY & STAFF:

All vehicles that are parked illegally in the NO PARKING ZONES are subject to applicable penalties.

#### NO PARKING ZONES

- \* Under Mango Tree (Loop )
- \* Double Parking
- \* Handicapped Parking (unless with sticker)
- \* Side of Bank of Guam & Snack Shop
- \* ALL Driveways

If you have questions about the parking, please contact Jay Olegeriil or Todd Ngiramengior @ 488-2470 ext. 344 or 225.

### News/Stories Wanted

MESEKIU'S NEWS welcomes stories/articles/announcements from students, faculty, and staff. Submission deadline is Monday at 4:30 p.m. in hard and electronic copies to [adoraa@palau.edu](mailto:adoraa@palau.edu), [dilubchs@palau.edu](mailto:dilubchs@palau.edu), and [alvinam@palau.edu](mailto:alvinam@palau.edu).

Please call ext. 250/252/253 if you intend to submit your article after Monday or for more information.

## Career continued from p.1

ty one (71), and so activities were provided in a series to ensure that we target as much of the graduating students as possible. Career/Transfer Workshops were held twice during the Fall 2011 semester for the Fall 2011, Spring 2012 as well as the Summer 2012 prospective graduates.

The aim of the Career/Transfer Workshops is to empower the students to make informed decisions about identifying the right career and/or four year institution to transfer to after their graduation from PCC. Specific workshop topics included Individual Education Plan; Career Interest Survey; and Resources for identifying the right four year institution. Out of the forty one (41) Fall 2011 & Spring 2012 prospective graduates, thirty (30) attended the first work shop. For the 2nd work shop, out of thirty (30) Summer 2012 prospective graduates, twenty-two (22) attended. Over all, the workshops went extremely well as a majority of the graduating students were able to attend.

In addition to the Career/Transfer Work-

shops, there was a Job Site Visit to Surangel & Son's Company for the sophomore students. The initial target group was the Office Administration majors as they comprised a majority of the group, including a couple of Business Accounting majors. Twenty four (24) out of thirty (30) prospective graduates were able to attend. Students were able to tour the main office, in particular human resource, accounting, and purchase & inventory areas. At the warehouse, they were given a tour of the over all process of goods coming in and going out. Students were also in time to watch the Quarantine & Custom Officers in action as the delivery of incoming containers were dealt with. At the Travel Agency, students were provided an informative tour of the intricacies of working in the travel industry.

We wish to thank Surangel & Son's Company and HR Manager Ms. Kimberly Elarianoff for hosting our job site visit, and providing our students with a personalized and educational tour of a successful company.



Kimberly giving the tour of the warehouse to the students.



Students paying attention to the presenters during the workshop.