

## Alumni Notes

### Class of 2004 (PCC)

*Pamfila Ann Techur*



2004 - Earned a CA degree in Office Administration. Completed her internship at Environmental Health, and upon completion of her degree, she was hired. She has been working there for the past six years as an IT Technician.

### Class of 2007 (PCC)

*Shelley Deblair Remengesau*



2007 - Double majored and earned an AS degree in Elementary Education Secondary Education specializing in Science, and also an AS degree in Marine/Environmental Science. She is the Environmental Community Educator at Solid Waste Management.

and also working as a tutor for Upward Bound Math and Science.

### Class of 2003 (PCC)

*Sabina Andrew*



2003 - Earned an AS degree in Tourism and Hospitality - Tour Services. She is currently working at Palau High School as an instructor for Tourism & Hospitality. Has been working at PHS for seven years.

**Alumni Notes** showcases MOC & PCC alumni who are positive role models and contribute to the quality of life in their local communities. If you are that alumnus/alumna or know someone who is, please contact the PCC Development Office at telephone number 488-2471. We would like to feature you in future issues of the *Mesekiu's News*.

**Mesekiu's News**  
Palau Community College  
P.O. Box 9, Koror, Palau 96940

### Celebrating Birthdays

Lowel Abraham	Feb 15
Abel Maech	Feb 15
Lourdes Reksid	Feb 17
Nena George	Feb 20

Happy Birthday To You!

## New Endowment Donors

PCC would like to welcome two new donors to the Endowment Fund. These two alumni's of PCC have decided to join in the bi-weekly donations. Shelley Remengesau is working at Solid Waste Management as the Environmental Community Educator while Pamfila Ann Techur is working at the Environmental Health Department under the Ministry of Health as the IT Technician upon graduating from PCC. Thank you both for making decision that will benefit future students. WELCOME ABOARD! If you wish to join the endowment fund, contact the Development Office at 488-2470/71 ext. 250, 252, or 253.



Shelley Remengesau



Pamfila Ann Techur

THANK YOU to Bradley and Odelomel KUMANGAI for their donation to the endowment fund in the amount of \$150.00

### DONORS ....

WE CAN HELP YOU  
PROCESS YOUR REFUND  
APPLICATIONS.

Fill the form and bring your last payday's check stub for 2010 to the Development Office.  
Call 488-2470 ext. 253, 252, 251

**PALAU BEACH BUNGALOWS**  
Peace & Relaxation Palauan Style  
Only \$40+tax daily rate  
Private a/c bedroom&bath, living room, kitchenette  
Beachside on big island of Babeldaob  
Melekeok State  
30 minutes from Palau International Airport  
RESERVATIONS: 680.587.2533  
Swim, snorkel, jungle walks, cultural sites  
palaubeachbungalows@palaunet.com  
www.palauparadise.com

## MESEKIU Basketball Corner

Team Mesekiu did it again on Monday night. They were able to hold off the Cardinals by two points, winning the game. This makes their official wins at three. Way to go TEAM MESEKIU!! The staff, faculty and students are encouraged to come and cheer for our team.

The following is the official schedule :

Jan 12 Ikelauans vs. Mesekiu (52 - 45)  
Jan 17 Mesekiu vs. Meyuns RS (51- 89)  
Jan 24 Ranchers vs. Mesekiu (74 - 91)  
Jan 27 Mesekiu vs. Shark Attack (85 - 90)  
Feb 1 Meda Boyz vs. Mesekiu (70 - 71)  
Feb 7 Mesekiu vs. Cardinals (80 - 78)  
Feb 10 Stingers vs. Mesekiu  
Feb 11 BOG vs. Mesekiu  
Feb 16 Mesekiu vs. 4Wheeler's  
Feb 17 Mesekiu vs. Surangel Kings

Come one, come all!! Let's cheer for our boys on the PCC Mesekiu Basketball team. For updates on game scheduling and time, please contact Hamilton Maech at 488-3885 or PNOG at 488-6562.

### EDUCATION OPPORTUNITY

URM in the Biological Sciences  
Apply for Summer 2011 to study and learn hands on in Hawaii.

Application: <http://www5.pbrc.hawaii.edu/urm/app/>

Deadline: **Feb. 28, 2011**

See Science instructors if you have questions

**PCC CAN HELP YOU  
UPGRADE YOUR SKILLS TO  
BOOST YOUR CAREER!**

**COME TO PCC!  
Call 488-2470**

### Vacancy Announcement

- (1) Computer Technician, Computer Services Office  
Salary range: \$12,049 - 20,607 per annum
- (2) Director, Human Resources Office  
Salary range: \$18,730 - 28,833 per annum
- (3) Director, Finance  
Salary range: \$18,730 - 28,833 per annum

For application forms and information, please contact Karen Mobil at PCC Human Resources Office at 488-2470/71, ext. 227.

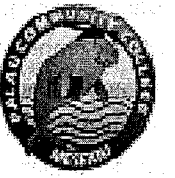
PCC is an Equal Opportunity Employer

FREE!!!

# Palau Community College



## MESEKIU'S NEWS



Friday, February 11, 2011

Weekly Newsletter

Volume 13, Issue 6

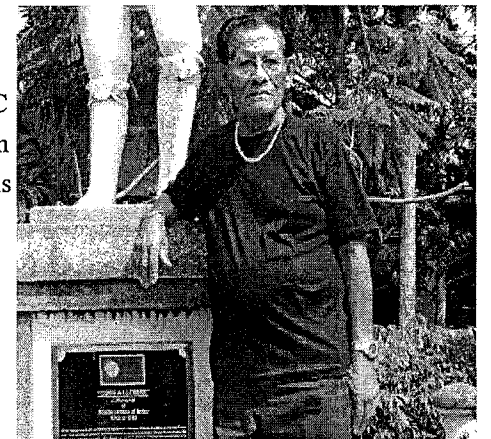
## Career/Technical Education Awareness Week

The Palau Community College will be holding its ANNUAL CAREER/TECHNICAL EDUCATION AWARENESS WEEK on March 16-17, 2011. This annual college event is to showcase PCC's career/technical education programs to high school and elementary school students. The community is also invited to join the college during this event. PCC students' demonstration projects that are for sale will be available at the time. For more information, please contact Sherman Daniel at 488-6504.

## 80 Year Old Challenges Appraisal Course at Continuing Education

Rdelchesong Tadao Ngotel who was a dynamic speaker for the State Legislature of Ngerchelongsong State is challenging a business appraisal course offered at PCC Continuing Education. Speaker, as often referred to, Mr. Ngotel admits that when he read the news about a 71 year old woman taking PCC classes, he wanted to make sure Palauan men were not beaten on the educational arena. His spirit of staying young to enjoy life to the fullest and helping others motivates him to challenge himself by actively participating in community activities and opportunities. He is often mistaken for his appearance as he appears to be in the middle or late fifties.

Astonishingly impressive by his real age of Ngotel Con't pg. 3



Mr. Tadao Ngotel - Former Speaker of Ngerchelongsong State Legislature

## Accreditation Steering Committee Presents Responses to Commissions Recommendations to College Community

Dr. Tellei, PCC President met with the faculty on Feb. 03, 2011 and the classified staff on Feb. 08, 2011 to update them on the preparation of the responses to the 2010 recommendations. The steering committee through four subcommittees is tasked with developing responses and providing evidences to substantiate those responses. Each subcommittee reviewed the recommendations as well as responses to specific findings to be compiled into the follow up report. The follow up report has been reviewed by the Executive Committee and the Board of Trustee. It will undergo further review by the Executive Committee and Board of Trustees before its submission to the Commission in March.



Meeting with Faculty



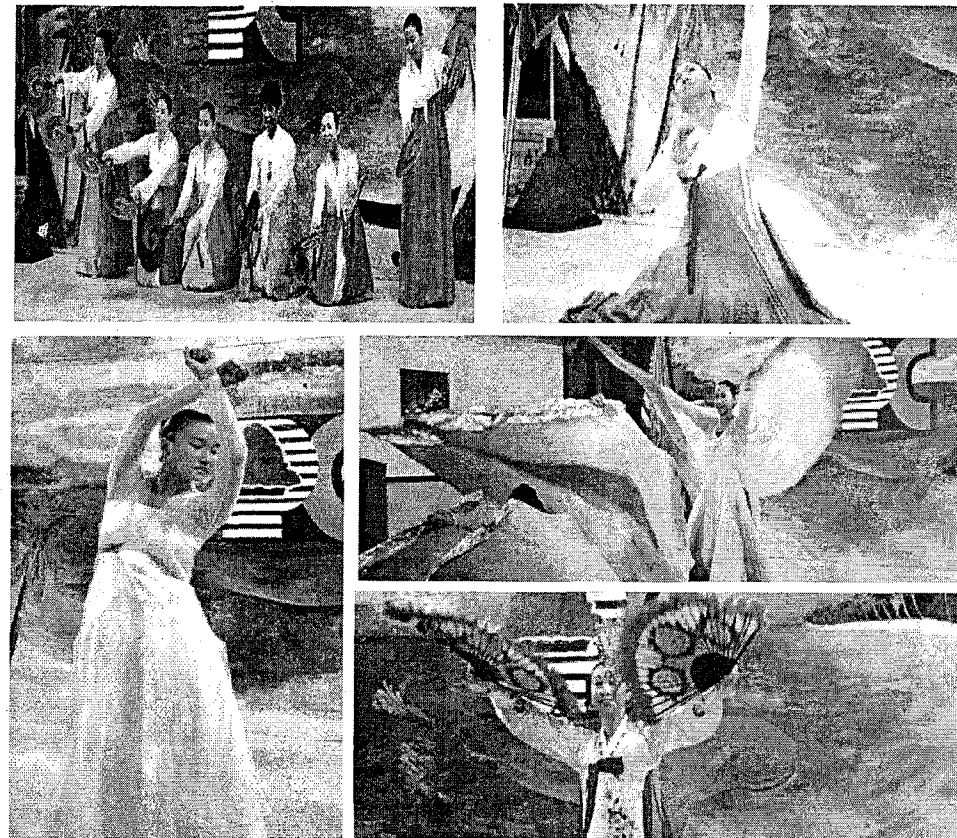
Meeting with Classified Staff

To ensure transparency through participatory classes, the steering committee headed by Dr. Tellei is currently conducting a series of group presentation, including faculty, classified staff and students, in which the draft report is reviewed and discussed.

*Palau Community College is an accessible public educational institution helping to meet the technical, academic, cultural, social, and economic needs of students and communities by promoting learning opportunities and developing personal excellence.*

## Geurimsan Christianity Academy Dance

PCC students and the community were treated to Korean Dancing by Geurimsan Christian Academy that came to perform on February 03, 2011. This Christian Academy Dance troupe performed their dances to moving songs that were in Korean, and many felt the emotions. One performance in particular, A Mother's Prayer, was performed by the group leader who felt so strongly about the song because it was about how a child was healed through a mother's prayer. Many eyes were filled with tears as they watched the performer connecting with the song and dance. At the end of the night, the troupe gave away gifts to all participants who attended the performance.



Geurimsan Christianity Academy Dance Troupe

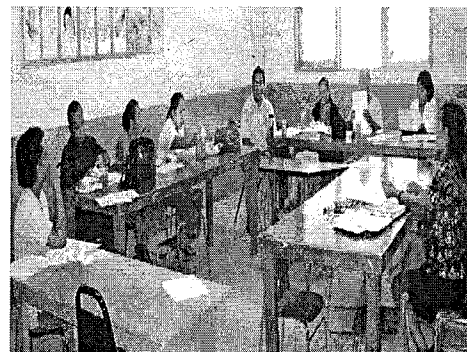
## Osaka University Students Presents Findings in Field Study

Four graduate students from Osaka University with their two instructors - Dr. Takashi Mita and Dr. Kaori Honjo, presented their findings on "Lifestyle Transformation in Palau in the Age of Globalization: Contemporary Health Issues and Future Prospects." The experiential learning was based on the group's meeting local individuals and groups to learn both the supply and production of the local foods. The focus of the study dealt with the past, present and future trend of the food supply and how Palau needs to continue promoting local foods. Their study included a meeting with a family in Ngerchelong where they tasted local food, learned about planting and harvesting taro, and about fishing. They also had the opportunity to meet MOE officials and discuss the lunch programs at the schools, even eating lunch with students at G.B. Harris Elementary School. They also had lunch with the senior citizens and concluded that they were being served nutritious and healthy meals. The interactive presentation included Q & A, as well as discussions to correct factual errors. Based on the success of the presentation and the study, the students would like to return for the *Taro Festival* in July to further their study.

## Adult High School Orients Instructors

Every semester, the PCC Adult High School staff conducts a Teacher's Orientation for the instructors. This Spring 2011, the orientation was held on Friday, Feb. 4, 2011. The orientation included ten instructors to teach 15 classes at PCC Campus and the Airai Campus. All instructors met with Director Mangham to discuss the courses, class scheduling, semester calendar, duties and responsibilities, course and student learning outcomes and course assessment rubrics. Also discussed in the orientation was the referral process designed to improve student learning and the overall student success. The AHS staff are working to update the course outlines to reflect the accreditation requirements.

AHS Cont'd pg. 3



Director Mangham meeting with AHS Instructors



L-R: Mami Wakabayashi, Megumi Hara, Sachimi Kubo, & Sayaka Kishimoto



Students, staff & community members attending the presentation

## BITS AND PIECES...

### PRESIDENT TORIBIONG'S LECTURE SERIES - "HISTORICAL PERSPECTIVE OF PALAU"

The second of the lecture series on the "Historical Perspective Of Palau" will focus on the *Constitution*. It will be on Feb. 17, 2011 at 6:30 pm at the PCC Assembly Hall. We invite all students and community members who are interested in learning more about the history of Palau to please come attend these lectures. DVD's of lectures are available. Contact Fermin Meriang at 775-2601 for copies.

### TAN SIU LIN PCC LIBRARY

#### HOURS of Operation:

M - Th 8:00am - 8:00pm  
Friday 8:00am - 6:00pm  
Saturday 9:00am - 6:00pm  
Sunday CLOSED

Thank you for your patronage. We are here to serve the students and the community.

#### Online Computer Lab (Rm 63)

This lab is only for students taking online courses and only online related work is done here. The online courses for the spring semester are: EN112, EN114, HI259 and SC249. 8:00am - 8:00pm

#### Open Computer Lab (Rm 60)

Lab is for all students who need to use a computer. Also a place to print coursework. Not connected to internet. Only for course related work. Lab Hours: 9:00am - Noon / 2:00pm - 8:00pm

#### Your Stories Wanted

MESEKIU'S NEWS welcomes stories/articles/announcements from students, faculty, and staff. Submission deadline is Monday at 4:30 p.m. in hard and electronic copies to aduraa@palau.edu.

Please call ext. 252/253 if you intend to submit your article after Monday.

## Nippon Foundation Donates Books

The PCC Library was recently awarded "100 Books for Understanding Contemporary Japan" from the Nippon Foundation. The books covers different aspects of life in Japan including politics, business, culture, literature, and history. Come take a look at Manga: Sixty Years of Japanese Comics, The Midnight Eye Guide to New Japanese Film, or Japanamerica: How Japanese Pop Culture Has Invaded the U.S. The books are on display at the library and available to check out.



Books on display at TSL PCC Library

## STEM FAIR is COMING SOON!!

The STEM Fair Committee has been meeting to discuss this year's upcoming fair. The fair is open for all students in the public and private schools from grade 6 thru grade 12. Judging for the fair will be held on March 16 -18 and will be held at each school that enters the contest. The two categories are 6th - 8th and 9th -12th. Prizes are: cash prizes for 1st - 3rd place and consolation prizes for 4th - 6th place. Grand prizes for both categories goes to the school that has the most awards. The grand prizes are the traveling trophy and a desk top computer system for the school's science classroom. Keep a lookout for more information as the date for the fair approaches. GET READY TO DISPLAY YOUR TALENTS AND IDEAS!!

## Ngotel Cont'd

sweet 80, he regularly takes 20 laps at the PCC track and field each day that proves his inspirational dream of enjoying life to the fullest.

Mr. Ngotel served 24 years in the Ngerchelong State Legislature when he left as a speaker. He also had served in the National Congress as well as worked in various government agencies. He emphasizes that it is never too late to do anything. "Learning stops only when you die." PCC welcomes the community, young and old to come and choose something you can enjoy and learn. Please contact PCC Continuing Education at 488-6223 and register for a class today.

## AHS Cont'd

AHS is fortunate that two PCC instructors are teaching AHS courses this semester and who are assisting with the CLO's and SLO's of the course(s) they are teaching.

## PRESS RELEASE

Palau Community College would like to inform the public that counterfeit checks supposedly issued by PCC have been cashed at local vendors. Therefore, we are asking all businesses to please verify the checks, observing all the security measures to ensure you are receiving an authentic check issued by PCC. PCC would like to encourage vendors to also verify individual's identification and will entertain calls from vendors for verification of checks. Please do not hesitate to contact Virginia Ikeya or Jay Olegeriil at PCC telephone number 488-2470/2471 if you would like to verify checks or need further information. Vendors are also encouraged to contact the Bureau of Public Safety at 488-1422 should suspicion arise in regard to the checks received.