



# MESEKIU'S NEWS



Friday, February 5, 2009

Weekly Newsletter

Volume 11, Issue 6

## Admissions & Financial Aid Holds Counselors Workshop



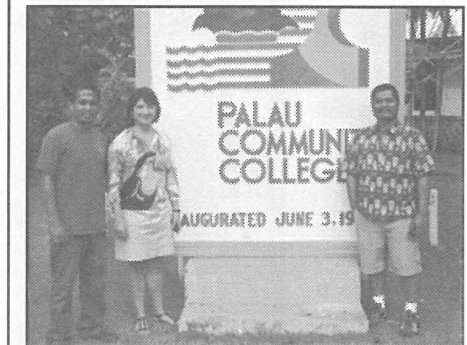
PCC Admissions & Financial Aid Director Dahlia Katosang (4th right) with PCC and high school counselors after the workshop.

commissioned as a preliminary orientation for the high school counselors and advisors involved to prepare sufficiently for next week's recruitment visits and financial aid nights. During the workshop attendees were able to ask questions about the college admissions process, and eligibility

**See Workshop on Page 2**

In anticipation of the coming 2009-2010 school year, the college's Office of Admissions and Financial Aid (OFA) organized a workshop for high school counselors and senior advisors, to familiarize them with the college admissions process and federal student aid reception. The workshop, which was held this Tuesday (Feb 03, 2009) at the CE Training Room, was attended by high school counselors and senior advisors from across the Republic, including Federal TRIO program counselors. Leading the workshop was Director Dahlia Katosang, from the Office of Admissions and Financial Aid, who oriented the workshop attendees on updates in PCC's academic programs and services, admissions requirements, and completion of Admissions Applications Forms. In addition to these topics the workshop covered new changes in federal student aid delivery for the forthcoming school year and application processing for the 2009-2010 Free Application for Federal Student Aid (FAFSA). The workshop was

## PEARSON International Exec Visits



PCC's Institutional Research Analyst and Assessment (IRAA) consultant Nino Pate (l) with Terry Ambrose of Pearson International and PCC Vice President of Administration & Finance Jay Olegeril.

**See Pearson on Page 2**

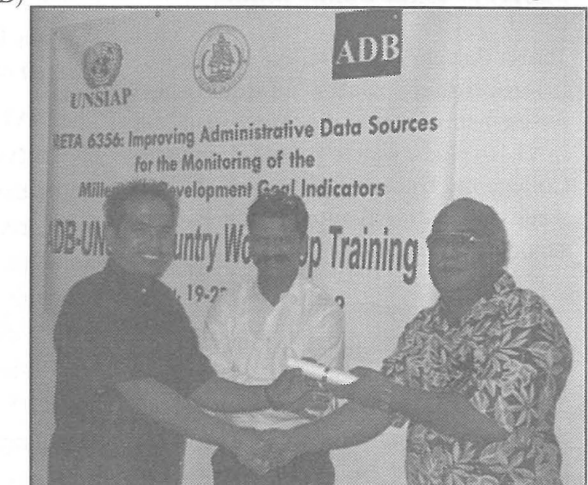
## Staff Attends ADB-UNSIAP Statistics Workshop

The College's Institutional Research Analyst and Assessment (IRAA) Consultant, Niño Pate attended the United Nations Statistical Institute for Asia and the Pacific (UNSIAP) and Asian Development Bank (ADB) Country Training Workshops on MDGs and Use of Administrative Data System for Statistical Purposes in collaboration with Office of Planning and Statistics (OPS), Ministry of Finance, Republic of Palau on January 19-23, 2009. A total of 38 officials from Ministry of Finance and the line ministries including Health, Education, Labor, and other government agencies participated and completed the course.

The training course was designed principally for statisticians involved in the

compilation of indicators for monitoring MDGs, particularly those related to education, health and vital statistics. In addition to the subject matter

**See Staff on Page 2**



PCC's Institutional Research Analyst and Assessment (IRAA) consultant Nino Pate (l) receives a Certificate of Completion from Director Antonio Mikel Director of the Bureau of Budget & Planning (r) Kaushal Joshi, ADB Statistician.

### Alumni Notes

#### Class of 1993 & 2008 (PCC)

Kenny Mers -



2003 PCC graduate with an Associate of Science (AS) degree in Criminal Justice, and an Associate of Science degree in Secretarial Science (SEC). Mers is an investigator for the Foreign Investment Board.

#### Class of 1997 (PCC)

Atu Taumoepau -



1997 PCC graduate with a Certificate of Achievement (CA) in Secretarial Science (SEC). Taumoepau works as an enforcement officer for the Ministry of Justice-Division of Fish &

Wildlife Protection.

#### Class of 1976 (MOC)

Kenzy Kenty -



1976 MOC graduate with a Vocational Certificate of Achievement (VCA) in Welding (Weld). Kenty is a Court Marshal Officer 3 with the Judiciary Office.

He has been with the force for 15 years.

**Alumni Notes** showcases MOC&PCC alumni who contribute to the quality of life in their local community and are positive role models for other PCC students to emulate. If you are that alumni or know someone who is, please contact the PCC Development Office at telephone number 488-2471. We would like to feature you in future issues of the *Mesekiu's News*.

**Mesekiu's News**  
Palau Community College  
P.O. Box 9, Koror, Palau 96940

### Celebrating Birthdays

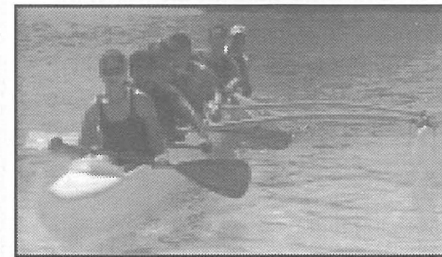
|                  |             |
|------------------|-------------|
| Lester Rekemesik | February 7  |
| Elenita Brel     | February 8  |
| Pory Wally       | February 9  |
| Nelson Esquerra  | February 10 |

Happy Birthday To You!

## Mesekiu Basketball in Good Form Going into Second Round

With a record of 5-3, the Mesekiu Basketball team is in a great spot going into the second round of the Palau National Basketball League (NBL) tournament. PCC Recreation Office staff Hamilton Maech who also coaches the basketball team said that their last game for the first round will be tonight at 7:30 pm at the Palau National Gym. They will play against the Ranchers and ask staff and students to come out and show loud support. For more information about Mesekiu Basketball, contact Coach Hamilton Maech at 488-3885.

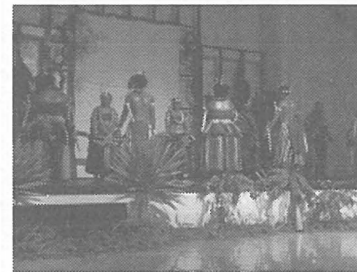
## Mesekiu Canoe Team Looking for Paddlers



Can you swim?...Then you can learn to be a professional outrigger canoe paddler. Contact Mesekiu Canoe Team manager Elizabeth deJong at ext 241, or stop by her office in the Temekai building. Canoes will start going out every weekend.

## "International Night" at the PCC Cafeteria in Pictures

Photos by: Rose Aliven Kohama



### PAL, from Page 2

for *Beginners*, which covered the basics of cataloging with a focus on using the Follett catalog system. Pioria Asito also of PCC Library, discussed *Shelving with Dewey*, an introduction to the Dewey Decimal System and the rules and guidelines for using Dewey to shelve in the library. To accompany Grace and Pioria's presentations, a full set of the *DDC* was presented to 5 different librarians. The *DDC* is a detailed guide for cataloging with the Dewey Decimal System, and was purchased with money from the current IMLS grant. In addition, Megan Beard, PCC Library Services instructor, gave a presentation

entitled *Planning Library Programming from Start to Finish*, outlining the steps to planning and implementing a successful library program. The training session also included a presentation on *Grant Writing for Libraries* presented by PIALA grant recipients, Sandy Fernandez, Mary Arius, and Imengel Mad. All current Library Services students attended the event and are scheduled to present their own special PAL training session in late April. Anyone interested in receiving information about upcoming library training sessions or PAL events can contact PAL at palau.libraries@gmail.com.

**Staff, from Front Page**

discussions and class exercises, participants also undertook group work on handling data quality issues relating to subject areas of Health, Education and Vital registration sectors.

“Let us seize this opportunity before us to begin the journey to improve both the human and technical factors that will lend support to improving Palau’s data collection, analysis and overall statistics production. A five, working-day may not be enough to improve our country’s statistical paucity or insufficiency, but this is an opportunity for you all to learn new statistical methodologies

and refresh your memories so that we can all collaborate in our respective functions and duties to further improve Palau’s statistical capacity.”, Vice President/Minister of Finance Kerai Mariur said during the opening of the workshop.

**Pearson, from Front Page**

Teresa Barrera Ambrose, the Director of International Sales Educational Assessment of Stanford Achievement Test (SAT 10) paid a visit to Palau Community College on Thursday as part of her two weeks educational tour of the Pacific schools and colleges.

Terry had the opportunity to meet with PCC VP-Administration Jay Olegeriil and Assessment Consultant Niño Pate. During their meeting, Olegeriil briefed Terry about the administration of the SAT 10 to all private schools and Pate showed the compiled 2008 SAT 10 Report for Palau Private schools. Terry shortly explains the

Consultant Pate is one of the key persons responsible for the Institutional Research directives of Palau Community College as well as the Annual Stanford Achievement Test (SAT 10) Report under Educational System of the Republic of Palau. “The workshop provides network opportunities with other professionals in the field of statistics particularly data management. Healthy discussions followed by



Nino Pate of PCC with UNSIAP statistician Gamini De Silva (r) and ADB's Kaushal Joshi.

presentations of findings were made initiating important dialogue to bridge much needed communication gap between the OPS and the line ministries concerned.”, Consultant Onz Pate said.

Pearson Inform- a database program for SAT 10 reporting and its uses.

The SAT assesses the basic curricular objectives in the areas of reading, mathematics, language arts, science and social science. It also provides updated content that reflects the national and state standards. SAT 10 was administered to two private elementary schools and five high schools in Republic of Palau namely Maris Stella, Seventh Day Adventist, Belau Modekngel School, Bethania High School, Emmaus High School, Mindszenty High School and Palau Mission Academy.

**Workshop, from Front Page**

requirements for the varied degree programs, and also contributed input about the interests of their students, which helped the staff of the Oafa understand the needs of the new graduating class of 2009. The workshop topics were not limited to helping students who will attend PCC, but also for others who plan to attend colleges and universities outside of the Republic. Interested students and their parents are encouraged to contact the Office of Admissions and Financial Aid with any queries about college entrance requirements and federal student aid. Also please refer to the published Recruitment Schedule for the 2009-2010 School Year for dates, times and locations of the high school visits and financial aid night sessions.

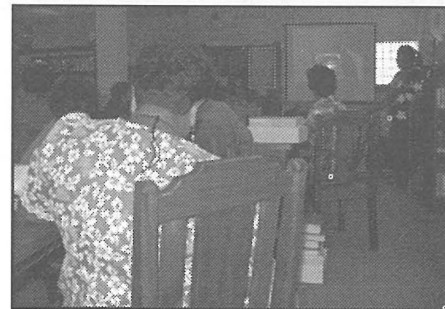


High school and PCC Counselors in a workshop

**Library Staff Presents at PAL Seminar**

Three members of the PCC staff presented library training sessions last Thursday at a special gathering of the Palau Association of Libraries (PAL). There was an impressive turnout with a representative from nearly every library in the country. During the event, Grace Merong of the PCC Library presented a session entitled *Descriptive Cataloging*

**See PAL on Back Page**



PCC Library Technician Grace Merong (standing-right) talks to workshop participants during her presentation at the PAL seminar.

**BITS AND PIECES...**

**REMINDER**

The following students are asked to come to the Development Office to submit their report cards from last semester, class schedule for this semester, and sign their scholarship waiver forms for Spring Semester 2009:

- Maile Ngiriou
- Marvin Mathew
- Diliaur Tellei
- Akiko Udui
- Walcy Ngirngotel
- Megan Mad
- Sean Mesubed
- Meleana Ngirmeriil
- Edward Ongerung
- Komtil Ngirmang

**Learn Palauan**

**Basic Palauan Class Forming...**

Do you want to learn Palauan? The Continuing Education is forming a class for basic Palauan language. Interested individuals are asked to contact Dean Willy Wally at the Continuing Education office at 488-2471, ext. 237.

**REMINDER**

**Scuba Diving Class Saturday...**

The Tourism & Hospitality Open Water Dive class will be meeting this Saturday at 8:30 am at Fish N’ Fins Dive Shop for the first water exercises. Students are reminder to bring 3 passport-size photos, towel, and sunscreen. If you own fins, mask, snorkel, bring them.

**REMINDER**

**Inter-Departmental Work Orders...**

All Inter-departmental work orders to the PCC Cafeteria must be submitted at least (5) working days prior to the date of service or products requested. Any work order submitted within the (5) working days limit must be accompanied by a written justification for the work order’s urgency. Thank you.

**37 Days Into Construction of the New PCC Library Construction**



According to NECO Construction Company, the contractor for the new PCC Library, construction work for the three-level structure should wrap up in September of this year. Total construction time is 270 days.

| Office of Admissions & Financial Aid<br>Palau Community College<br>Recruitment Schedule For 2009-2010 School Year   |                             |              |                |                            |
|---|-----------------------------|--------------|----------------|----------------------------|
| <b>Phase I: HS VISITS:</b><br>College representatives will visit all high schools throughout Palau and meet with the seniors to discuss Palau Community College’s academic programs and services. Then the Director of Admissions & Financial Aid will discuss admissions requirements and provide Admissions Application Forms to interested seniors and assist them to complete forms.  |                             |              |                |                            |
| DATE (February 2009)  | HIGH SCHOOLS                | # of Seniors | TIME           | PLACE                      |
| 10 – Tuesday  | Belau Modekngel Sch. (BMS)  | 4            | 10:30 – 12:30p | BMS Classroom              |
|   | Bethania High School (BHS)  | 20           | 1:00 – 3:00pm  | BHS Classroom              |
| 11 – Wednesday  | Mindszenty HS (MHS)         | 48           | 12:45 – 1:45pm | MHS Cafeteria              |
| 13 – Friday   | Emmaus High School (EHS)    | 15           | 2:30 – 4:30pm  | EHS Classroom              |
| 16 – Monday   | Palau Mission Academy (PMA) | 11           | 11:45 – 1:45pm | PMA Classroom              |
| 17 – Tuesday  | Palau High School (PHS)     | 165          | 9:30 – 11:00am | PHS Multi purpose building |
| <b>Phase II FINANCIAL AID NIGHTS:</b><br>During the Financial Aid Nights, Director of Admissions & Financial Aid will meet with high school seniors and their parents during the evenings to discuss various Federal Student Financial Aid Programs, Eligibility Requirements and assist interested students to complete financial aid forms. (Note: Parents and students’ 2008 income from wages, social security benefits, pension plans, etc. are needed to complete the application forms). |                             |              |                |                            |
| DATE (February 2009)  | HIGH SCHOOLS                | # of Seniors | TIME           | PLACE                      |
| 9 – Monday  | Palau Mission Acad. (PMA)   | 11           | 7:00 – 9:00pm  | PCC Badrirt                |
| 11 – Wednesday  | Mindszenty High Sch. (MHS)  | 48           | 7:00 – 9:00pm  | MHS Cafeteria              |
|   | Belau Modekngel Sch. (BMS)  | 4            |                |                            |
| 13 – Friday   | Bethania High School (BHS)  | 20           | 6:00 – 8:00pm  | EHS Classroom              |
|   | Emmaus High School (EHS)    | 15           |                |                            |
| 17 – Tuesday  | Palau High School (PHS)     | 88 (A – M)   | 6:00 – 8:00pm  | PHS Multi purpose building |
| 18 – Wednesday  |                             | 77 (N – Z)   |                |                            |
| Total Seniors   |                             | 263          |                |                            |