

Alumni Notes

Class of 2003 (PCC)

Myla Mira -

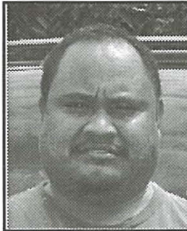


2003 PCC graduate with an Associate of Science (AS) degree in Business Accounting (BA). Mira works at the Ministry of Health-Family Health Unit as an Administrative

Assistant 1. She has been working there for the past 3 1/2 years.

Class of 1995 (PCC)

Perry Hideos -



1995 PCC graduate with a Certificate of Achievement (CA) in Carpentry (CARP). Hideos works at Palau High School as a Carpentry Instructor. He has been working there for the past 2 years.

Class of 1991 (MOC)

Richard Ngiratrang -



1991 MOC graduate with an Associate of Science (AS) degree in Police Science (PS). Ngiratrang works at the Attorney General's Office as a Detective Lieutenant/Investigator. He has been working there for the past 6 1/2 years.

Alumni Notes showcases MOC&PCC alumni who contribute to the quality of life in their local community and are positive role models for other PCC students to emulate. If you are that alumni or know someone who is, please contact the PCC Development Office at telephone number 488-2471. We would like to feature you in future issues of the *Mesekiu's News*.

Mesekiu's News

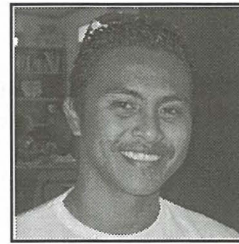
Palau Community College
P.O. Box 9, Koror, Palau 96940

Celebrating Birthdays

Elenita Brel	February	08
Pioria Asito	February	09
Jay Olegeriil	February	10
Dr. Nelson Esguerra	February	10
Robert Pamarui	February	13

Happy Birthday To You!

More Show Support to Endowment Fund



Bobby Rideb



Kiblai Suzuki

Bobby Rideb of Surangel & Sons Company; Inaria Dou and Lesley Ngiramolau of Ngarchelong State Government (both not pictured); and Hellen Imanuel (not pictured) of the PCC Upward Bound program are the newest members of the Endowment Fund. Kiblai Suzuki also of PCC Upward Bound program who is already a supporter of the Endowment Fund increased her bi-weekly allotment by more than 100%. PCC welcomes the new supporters of the Endowment Fund and invites others who have not signed up to show their support as well. For more information about the PCC Endowment Fund, please contact Hulda, Dilubch, or Koyungil at the Development office at 488-2470 ext. 253.

Mesekiu Basketball Team Wins 4th Game, Enjoys Dinner Treat

By: Assistant Coach Hussein Derbai and Team Player Marvin Mathew



Mesekiu Basketball Team enjoying their dinner sponsored by Rosita Weilbacher and daughter Dirralmii at Rock Island Cafe.

Last Saturday night, the Mesekiu Basketball team won its fourth game against Palau Pacific Resort, 96-64 at the Palau National Gymnasium. Joseph Joseph scored the most points in the game with 17; co-captains Duffy Tulensru and Edison Anjerok scored 14 and 12 points respectively; Chris Chiba scored 11 points; and Chris Carlos scored 10 points.

As promised, Rosita Weilbacher, the Cafeteria Food Service Coordinator, and her daughter, Dirralmii treated us to a night of extra-large pizzas, ice teas, fries, and spicy chicken at Rock Island Cafe after our fourth straight win.

We, the Mesekiu Basketball team, would like to extend our appreciation to Rosita

EMS, AGS, & IT Scholarship Deadline Feb. 15th

Applications for the Science, Technology, Engineering, and Mathematics (STEM) scholarship available for Environmental/Marine Science, Agricultural Science, and Information Technology students must be submitted to PCC Development office by 4:00 p.m., February 15th, 2008.

If you do not have an application form, please stop by the Development office and get one.

Applicants must submit:

- **completed form**
- **verification of citizenship** (copy of official Palau, FSM, or RMI passport or notarized copy of birth certificate);
- **official transcript**
- **copy of an official acceptance letter from PCC** (high school students only)
- **copy of high school diploma or certificate equivalent thereto** (high school students only)
- **class schedule for 2008 spring semester** (PCC students only).

For further information, please call Development office at 488-2470 ext. 253.

and Dirralmii for keeping their promise and treating us for dinner. Thank you also for your support and contribution!

Palau Community College FREE COPY



MESEKIU'S NEWS

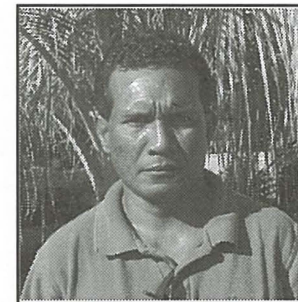


Friday, February 08, 2008

Weekly Newsletter

Volume 10, Issue 6

Voc. Ed. Awareness Week to Expand Scope "Career Exploration" Proposed



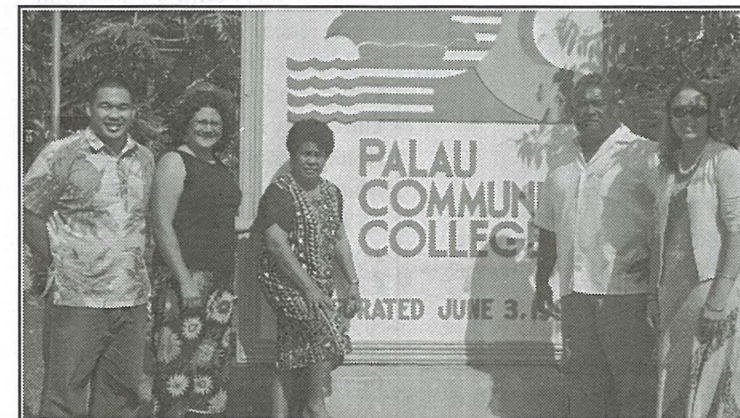
Associate Dean Sherman Daniel, Voc. Ed. Chair

In addition to the informative campus tours and student exhibits and demonstrations that have made the PCC Vocational Education Awareness Week popular with elementary and high school students, the planning body has confirmed that they are looking into the possibility of including "Career Exploration" as part of this year's event. According to Sherman Daniel who is leading the overall effort, the focus of the annual college event has always been on

elementary and high school students, showing them what PCC has to offer in terms of programs and services. "We will continue to plan and tailor our awareness week activities to woo prospective students, but this year we are considering expanding the scope somewhat to include our own students with the idea of a Career Exploration," Daniel said. "We want to invite local businesses and agencies to set up on campus interactive demonstration booths which we expect will help our students learn more about potential career fields after their years with us at PCC," Daniel added.

The organizing committee which relies primarily on students to serve as campus tour guides and exhibitors has scheduled the awareness week for March 11-13 to coincide with PCC's spring break. Daniel says that with the dates now set, sub-committees carry out assigned tasks and report to him during the weekly meeting.

IOA-LSAMP Officials Visit PCC



President Dr. Patrick U. Tellei (2nd from right) and Dean Alvina Timarong (3rd from left) with IOA-LSAMP officials: Joshua Kaakua (l) of the University of Hawaii-Manoa; Carmen Perez-Frayne (2nd from left) and Moana P.K. Ching (r) of the University of Hawaii-Hilo during their campus visit on Tuesday.

(See Story on page 2)

89% Approve of Quality of Instruction, While 80% Say Staff Unfriendly/Unhelpful

An exit survey conducted on the 2007 graduating students at PCC indicates that close to 90% of them approve of the quality of education at PCC. The focus of the survey conducted by the Development Office was to congregate from the graduating students information that would help the College assess the effectiveness of its programs and services and to identify areas that need improvement.



2007 PCC graduates.

Survey Highlights:

- A total of 63 students were surveyed. 24 out of 25 or 96% were graduates of the School of Arts & Sciences; 24 out of 25 or 96% from the School of Business; and 15 out of 17 or 88% from the School of Technical Education.
- 95% satisfied with the academic advising they received; 94% satisfied with the quality of instruction in their respective major.
- 33% were dissatisfied with the friendliness/helpfulness of office/support staff.

(this point was further verified when an ambush survey was conducted on 15 PCC staff and 15 students which showed

(Continued on page 2)

Basic Statistics Refresher Course This Afternoon

The Development Office in collaboration with the Continuing Education (CE) office has put together a refresher course in Basic Statistics. The 4-hour course is scheduled for today, Friday, February 08, 2008 from 1:00 p.m. to 5:00 p.m. at the CE training room.

The course will be taught by Nino Pate, the Institutional Research Analyst and Assessment Consultant of the Development Office, and it will cover basic concepts in statistics such as statistical terminology, descriptive statistics, and graphic presentations. It is also designed to help college staff who collect, interpret, or use data in their professional capacity. The course contains two sections with four modules. The achievements of learning goals are channeled through readings of four

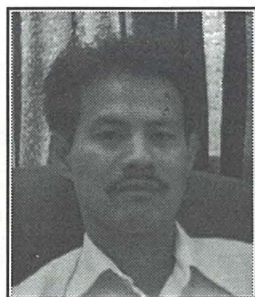
assigned modules. The topics of the course will be covered according to the following scheme:

Section A: Math Refresher Module
Module 1: Review of Ratio and Proportion/Review of Percent (1hr.)

Section B: Descriptive Statistics Refresher Module
Module 2: Introduction to Basic Statistics and Statistical Terminology (1 hr.)
Module 3: Frequency Distributions and Graphic Representation (1 hr.)
Module 4: Mean, Mode, Median, and Standard Deviation (1 hr.)

For more information, please call Human Resource office at 488-2470/2471 ext. 227.

Charter Day Activities Proposed Trip to Iou'ldaob Favored



Tchuzie Tadao, Charter Day Organizing Committee Chair

Popular opinion among the 16-person planning team charged by President Tellei to prepare for what will be the 15th birthday of the College appears to favor an educational excursion to one of the neighboring southern island states. During their meeting on Monday, the group explored the possibility of holding the celebration away from campus, and after much debate which appropriately always kept budget at the center of everything, a consensus was reached.

It was agreed that an event similar to that of last year's charter day activity which saw the whole school embark on an educational safari tour of the big island of Babeldaob would be most favored by staff and students. The group however

proposed that instead of Babeldaob, the College should focus this year on Iou'ldaob, specifically the island State of Peleliu. The Director of Upward Bound Math & Science program Tchuzie Tadao who leads the planning team said that for logistical as well as educational considerations, Peleliu was favored over Angaur. Peleliu being renowned for its cultural landmarks and numerous historical WWII sites, Tadao said it would provide a perfect learning backdrop for the College's visit. Even though the proposed excursion to Peleliu was highly favored, other options such as visits to the states of Ngaremlengui and Airai on the big island of Babeldaob, and a pleasure trip to the Rock Islands were suggested as alternatives.

Tadao said that sub-committees have been assigned to prepare logistical as well as detailed expense reports on all proposed destinations and activities, including preparation for the time-honored Charter Day President's Run/Walk. He said he's confident that the committee will be ready after its meeting next Monday to forward a final proposal for President Tellei's consideration.

(Continued from page 1- Exit Survey)

80% of them being dissatisfied with friendliness/helpfulness of office/support staff)

Of the sixty-three (63) students surveyed, 89% said their overall experience at PCC was helpful and met their expectation of a two-year community college. However, special effort should be made to improve friendliness/helpfulness and overall customer service of office/support staff.

The Development office would like to thank the PCC Class of 2007 for participating in the survey and helping to make PCC a better learning institution. We welcome you to stop by the office for a copy of the report. Further appreciation goes out to the staff and students who participated in the ambush survey.

For questions regarding this survey, please contact the Development Office at 488-2471, ext.253.

(Continued from page 1- LSAMP)

"We came here to get to know PCC, the students, and Palau so that we better understand the needs of the students, said Carmen Perez-Frayne who is among the Islands of Opportunity Alliance (IOA)- Louis Stokes Alliances for Minority Participation (LSAMP) Program three-member group on island for a day study tour.

This program is geared towards increasing the quality and quantity of students successfully completing in the Science, Technology, Engineering, and Mathematics (STEM) disciplines. Frayne and Moana P.K. Ching from the University of Hawaii-Hilo and Joshua Kaakua from the University of Hawaii-Manoa met with President Dr. Patrick U. Tellei, Dean Alvina Timarong, VP Jay Olegeriil, and LSAMP- STEM Campus Coordinator Vernice Yuzi during their short stay. They also made some time to tour Palau International Coral Reef Center, PCC R & D Station, Capitol, Babeldaob, and the rock islands before leaving Tuesday night.

BITS AND PIECES...

THANKS

Ministry of Finance Donates to Cafeteria...

The College thanks the Ministry of Finance, especially Minister Elbuchel Sadang and his staff for donating a cooler filled with a variety of fresh reef fish to the PCC Cafeteria for the dormitory students.

REMINDER

Attention Fall 2007 Graduates...

In line with the Graduating Student Exit Survey, we would like to request the fall 2007 graduate students to fill up the assessment form at the Institutional Research-Development office on or before 15th day of February. As a recent graduate, your evaluation is very important to PCC.

Emesiochel, Shinoyumi L.
Ewatel, Pasquana
Guramtin, Julie
Kumangai, Dodger
Laagmay, Clara
Layan, Mary
Maag, Elizabeth F.
Miteg, Josephine
Moya, Mason
Ngiralbong, Carter
Ngiramengior, Lantz D.
Piyemal, Paul J.
Remengesau, Shelley
Sulog, Liyon
Tman, Jennifer M.
Ucherkemur, Annette
Yeh, Tan B.

THANKS

Ramon, Soledad, and Sunshine Garcia and Norma A. Etibek extends their sincerest appreciation and heartfelt gratitude to all the PCC staff and students. Your support and generosity during this time of sorrow will not be forgotten. Gob Bless us all!

Succeeding in College- Part 2

Taken from Study Tips.com at www.how-to-study.com

Stay Physically and Emotionally Healthy

You will need to be at your best to succeed in college. This means taking care of your body and maintaining a good frame of mind.

- * Get enough sleep.
- * Don't rely on coffee and drinks that contain high doses of caffeine to provide you with energy. Foods such as pasta, peanut butter, non-sugar cereals, and fresh fruit are healthy alternatives to provide the energy you need.
- * Avoid junk foods. Fast food is convenient but usually not good for you.
- * Use the services of the student health office. These services typically include emergency treatment, low cost examinations, and low cost or free medication.
- * Use the services of the counseling office. The professionals there can help you overcome feelings of loneliness, depression, and anxiety.

Choose a Professor Carefully

In college you get to select your schedule of classes. Most classes offer more than one section so that you can choose not just the day and time, but the professor who is teaching that section. Often you will find student ratings of professors on the Internet. You can get even more feedback by talking to other students. Try to choose a professor who demonstrates the following characteristics.

- * Maintains adequate office hours.
- * Provides constructive feedback.
- * Adapts to different styles of learning.
- * Grades fairly.
- * Is highly competent in the subject being taught.
- * Establishes clear and reasonable requirements.
- * Provides a positive learning environment.

Work With Your Advisor

As a student you will be assigned a faculty advisor to help you with both academic and career issues. It is up to you to get the most out of this guidance.

- * Know your advisor's office location, schedule of office hours, and contact

information.

- * Schedule an appointment with your advisor at any time you have problems that affect your academic performance.
- * Consider your advisor's ideas when selecting your major or at any time you are considering changing your major or career goals.
- * Have specific questions in mind whenever meeting with your advisor.

Make Good Use of the Library

You are going to spend a lot of your time in college at the library. Take full advantage of this major resource.

- * Get to know the resources of the library as soon as you get to college.
- * Learn to use its computer resources and card catalogs.
- * Make good use of its equipment such as copy machines, microfiche readers, production facilities, etc.
- * Check out its quiet study areas. Sign up for their use if required.

Get Involved in Campus Life

There is a lot more to college than just classes. A college campus is an exciting, dynamic environment that can provide you with many opportunities for enhancing your college experience.

- * Join a student organization that is consistent with your interests. You will find many organizations from which to choose.
- * Join a club in your major. This cannot only help you in your studies but can provide contacts that may be very useful in your future career.
- * Join an intramural team. This is a great way to keep yourself in good physical shape and make new friends.
- * Attend social events. Your college experience should not be all work and no play.

Yes – success in college takes effort. But this effort will provide benefits to you throughout your life. The ideas presented above can help you to make your college experience a successful one.