

Palau Community College - Continuing Education

Palau Community College Continuing Education announces to the public that it will be offering the following short-term training classes for Spring 2001.

- Office 2000
- Intro. to Fabric Design
- Intro. to Drawing
- Intro. to Watercolor Painting
- Intro. to Printmaking
- Intro. to Oil Painting
- Batik Painting
- Basic Accounting
- Basic Plumbing
- Basic Small Engine Repair
- Conversational Japanese
- GPS Training
- Marmar & Lei Weaving
- Palauan Conversation

For details call or email Lorraine Rdiall at Ph.#: 488-2471 ext. 270
email: lorrainr@belau.org

TOEFL Information for School Year 2000-01

Test Dates	Registration deadline	Scores mailed
Jan. 20, 2001	Dec. 4, 2000	Feb. 28, 2001
May 12, 2001	Mar. 26, 2001	June 20, 2001

* Registration fee is \$110 and you may contact the PCC Counseling Office at 488-3036 for more information.

THANK YOU FOR YOUR HELP!!!

My sincere thanks and appreciation to my fellow colleagues, friends, and well-wishers at the college for their *badek* and flowers to me and my family during my time of sorrow.

Thank you all so very much.



Our condolences to Leo Ben Teriong on the loss of his father Teriong Beouch. The College family mourns with you and expresses its deepest sympathy to you and your family.

Celebrating Birthdays



Lourdes Reksid February 11
Onesimo Santos February 20
Baskasio Oiterong February 22

Happy Birthday to you !!!



Palau Community College

MESEKIU'S NEWS

FREE COPY



Friday, February 16, 2001

Weekly Newsletter

Volume 3, Issue 7

Continental Micronesia Donates Blankets to PCC



(l-r) Jose Ise, Continental Airlines Station Manager; Mace Kesolei, Continental Airlines accounting staff and also a recent PCC graduate; and PCC President Patrick Tellei holding samples of the donated blankets.

"The warmth of Micronesia" - Continental Micronesia is definitely going to keep a lot of needy PCC students warm at night with their recent donation of blankets to the College.

Jose Ise, the airline's Station Manager and Mace Kesolei of the accounting office, also a PCC alumnus, presented the gifts on behalf of the airline to PCC President Patrick Tellei during the brief meeting at the PCC boardroom earlier this month.

"These blankets are ideal for student's use on overnight trips to the rock islands or field trips," said Mr. Ise. "They can also be utilized by the new students arriving from off-island until they can have time to go shopping," he added.

PCC President Patrick Tellei thanked Continental Micronesia and said that PCC has been very fortunate to have had, and apparently continues to get backing from big donors like Continental Micronesia. "The airline has clearly demonstrated, as it always has, the exemplary actions of a good corporate citizen and PCC is both proud and happy to benefit from such actions," President Tellei said.

Continental Micronesia has, in the past, donated airline tickets as prizes for the annual college endowment fund party.

AG Club Prepares for Plant Sale

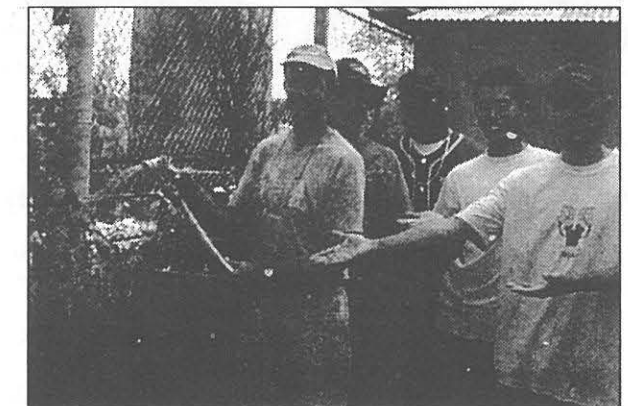
Members of the PCC Agriculture Club are preparing for a sale of vegetable seedlings to be held on Thursday, March 1, from 3:00-4:30 pm. The sale will be held in the summer house beside the PCC Nursery where students will be selling seedlings ready for transplant to your home garden. They will have the following:

- Tomato, variety Capitan
- Bell Pepper, variety Fat & Sassy
- Chinese Cabbage, variety Saladeer
- Pak Choy, variety unknown

They are all selling for 50 cents each, or 6 for \$2.00.

We have successfully grown all of these varieties on our student farm, so with care you should be able to grow them at home. Quantities of plants will be limited, and sales will be on a

"first-come, first-serve" basis, so come early! The Club may also be selling some cockerels (young roosters) at this sale. Price information will come out in the future issues of the Mesekiu's News.



For further information about the sale, please contact Club president Fred Ikertang, or AG faculty Joel Miles and Reiko Kawamura.

Mesekiu's News
Palau Community College
P.O. Box 9
Koror, Palau 96940

Upward Bound Program Rake-In Big \$\$ with Valentine's Day Candy Grams



Upward Bound Program students and staff turned the UB office into a "candy gram mill" churning out 10 candy grams a minute on Valentines day.



UB students with UB staff Veronica Kloulechad (foreground) break from candy gram duties and pose for a picture.

PCC Wins Valentine's Day Softball Tourney

PCC *Mesekiu* headed by team manager Todd Ngiramengior and coach Gaylord Rdechor won the Valentine's Day co-ed softball tournament sponsored by Belias Softball Association. Ms. Bianca Adelbai, PCC sophomore, with her sensational skills led the team to victory. Additionally, smart plays, good efforts and coaching made it possible for the college to capture the championship. Cash prize of \$150 was awarded the champions *Mesekiu*. Special thanks to Computer's Plus for donating the team uniforms.

Dr. Failautusi Avegalio, Jr. New Head of UH- Pacific Business Center Program

David McClain, Dean-First Hawaiian Bank Distinguished Professor of Leadership and Management, College of Business Administration-University of Hawaii at Manoa is pleased to announce the appointment of Failautusi Avegalio Jr., D.Ed. to be the director of Pacific Business Center Program.

Dr. Failautusi Avegalio, Jr., has joined the Pacific Business Center Program as its first permanent director since Ms. Angela Williams, its first director, left the Center in 1998. Dr. Avegalio, or "Tusi" as he prefers to be called, has over 25 years of experience in teaching, management, and consulting for multi-national companies, businesses and community organizations in Hawaii and the Pacific Islands.

Tusi taught at the University of Hawaii at Manoa College of Business Administration from 1989 to 1992; served as president of the American Samoa Community College from 1993 to 1997; returned to Hawaii as an East-West Center Pacific Islands Development Program research fellow in 1998; and resumed teaching at CBA in 1999, as adjunct professor for management and industrial relations.

Tusi, a native of American Samoa, studied at Emporia State University, Emporia, Kansas (BA, BS, 1974); Truman State University, Kirksville Missouri (M.Ed., 1978); and at the University of Utah, Provo, Utah, where he received a doctorate in educational administration in 1987. He is also a Polynesian *alii*, and received the title of "Papalii" from the village of Sapapalii on the island of Savaii, Samoa.

"I'm truly honored to have been selected as the Center's Director," said Tusi. "I believe the Center can help communities strengthen their economies through local capacity development. We can help them with economic development strategies that build on their native strengths, while continuing to educate and provide businesses with the various services for which the Center has gained a fine reputation."

For more information about the Pacific Business Center Program, call Tusi at (808) 956-2494, e-mail: director@cba.hawaii.edu, website: www.cba.hawaii.edu/pbcp/.

Agriculture Club has New Vice President

In their regular meeting on Thursday, February 8, 2001, the members of the PCC Agriculture Club elected a new vice-president. The new vice-president is Mr. Presley Andrew who will replace outgoing vice-president, Kaipō Recheungel, who recently got accepted for a scholarship to attend a college in Japan. Congratulations to Presley Andrew!

RETENTION WEB PAGE

PCC Retention Office, Tel. #: 488-2471, ext. 247

Valentine's Day Messages

To: Project Beacon Girls
Fr: PB Cupid
Mssge: Happy Valentine's Day & Take it Slowly.

To: Mike & Joe
Fr: PB Tutors
Mssge: Please take the day off!

To: Jay Mereb
Fr: Your Girl
Mssge: AL BAB IU!!!!

To: Moks2, Oboch, Fub2, Evita, and Franston
Fr: PB Tutors
Mssge: Much Love To You All.

To: Kent
Fr: URFWEND
Mssge: Happy Valentines Day!

To: Lynna Erindel Thomas
Fr: Project Beacon
Mssge: We love u... We'll miss u H Vday!

To: BUDZ, DILZ, ELUUT
Fr: Murl
Mssge: Happy Valentine's Day

To: ALL PCC STUDENTS
Fr: Student Trustee
Mssge: Happy Valentine's Day

To: LTE FRITZ AND DILI
Fr: Murl
Mssge: HVDDAY.....

To: ELW, IWE, TELAEL, ONGI, & OBECH
Fr: Munch
Mssge: HVDDAY.....

To: 2ALYN
Fr: Murel & Gwen
Mssge: HVDDAY.....

To: BOCH & OMON
Fr: Ton
Mssge: I love you Both

To: NADI & KLIKIID
Fr: Murl
Mssge: Happy V-Day!

To: SECHOU M. RENGIL
Fr: MJ41298
Mssge: Happy V-Day!

To: Marianne Temaungil
Fr: PB Tutors
Mssge: Happy V-Day!

To: JONNIE N.
Fr: Letz & Murl
Mssge: HappyVD..... Thanks 4 the licence

To: NALYZE, PAULINE, ZONZ
Fr: Rairi
S: Etikom (Balkuu)
Mssge: Happy Valentines Day

To: KUNUKU HUMUNUKUAPUA
Fr: Misterious Guy
S: Diakarenguk er kau (Wilbur)
Mssge: Unsolveeeeee

To: Bianca A, Gabz, Tau-o, Moks, and Oboch
Fr: #009
Mssge: Zestyyy

To: #006 Ikelaunz
Fr: #009
Mssge: No Doubt
Down 4 yours if your down 4 mine.....

To: PROJECT BEACON BOYS
Fr: PB Cupid
Mssge: Take it slowly.....

THE BEST PRESENT OF VALENTINE'S DAY IS L.O.V.E.

LOVE

Love is very strong word,
But very short word.....
Love- the word strikes me
Like a sting of a bee
So intimidated by the power of
The message.....
The sweetness of the voice
Whispers to me....
The night is cold,
It warms me to know
The love is here close by
My side.....



PCC Students take time out from their rigorous class schedules to enjoy Valentines Day.

Academic Calendar Spring Semester 2001

February 20	T	Last Day to Remove Incompletes
March 5-9	M-F	Midterm Period
March 15	TH	Holiday: Youth Day
March 30	F	Last Day for all Withdrawals
April 13	F	Holiday: Good Friday
May 3	TH	Last Day of Instruction
May 4	F	Holiday: Senior Citizen's Day
May 7-9	M-W	Final Examination Period
May 11	F	Grades Due/ End of Spring Semester
May 18	F	Commencement Exercise/ Graduation

Thank You!!

Kom kmal mlo
mesaul ra
bedekiu ma
medemiu el mle
duum ra
kememldiil ra
delak.

Ephraim
Ngirachitei