

Alumni Notes

Class of 1998 & 2003 (PCC)

Yvonne Ruloked



1998 - Earned an AS degree in Business Accounting. Worked at Koror Elementary School as a 4th grade teacher right after graduation. She then came back to complete her AS degree in Education - Elementary Education in 2003. She is currently the 7th grade home room teacher.

Class of 2002 (PCC)

Glendalynn Tau'o Ngirmeriil

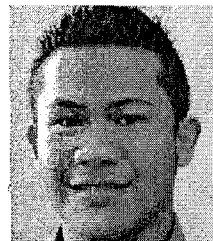


2002 - Earned her AA degree in Liberal Arts. After graduation, transferred to Hawaii to complete her degree in Sociology. Worked at Dept. of Social Services for years, and now has moved back to Palau. She taught at Palau Mission Academy for a

year and now she is currently working at PCC as a Counselor/Advisor at Student Life Office.

Class of 2005 (PCC)

Jr-Young Sikyang



2003 - Earned a CA degree in Criminal Justice. He previously worked at Palau Royal Resort for four years. He now has worked at the Court Marshall's Office for the last two years. He also indicated that he is interested in furthering his education.

Alumni Notes showcases MOC & PCC alumni who are positive role models and contribute to the quality of life in their local communities. If you are that alumnus/alumna or know someone who is, please contact the PCC Development Office at telephone number 488-2471. We would like to feature you in future issues of the Mesekiu's News.

Mesekiu's News
Palau Community College
P.O. Box 9, Koror, Palau 96940

Celebrating Birthdays



Ruskey Remoket Feb 24

Happy Birthday To You!

Ministry of Health Press Release

Two teams of eye specialists will be in Palau this month and in March to conduct general check up and surgical clinics for patients at the Belau National Hospital. Dr. Jim Handa & Dr. Mark Wieland will conduct eye clinic exclusively for diabetic patients at Belau National Hospital from Feb. 21-25, 2011 at the OPD. Diabetic patients who plan to visit the specialists must consult their primary physicians and make appointments for the clinics at the OPD. For the surgical clinic, patients who wish to visit the specialists must also consult their primary physicians and make appointments with OPD. Clinic will be Mar. 09 - 22, 2011. For more information about the eye specialists or to set up appointment, contact the OPD at 488-2555 from 7:30am - 4:30pm (M-F).

Palliative Care / Family Caregiver Workshop

February 21 - 25, 2011

Ngarachamayong Cultural Center
For more information, contact NCD
Unit at 488-4612

DONORS

WE CAN HELP YOU
PROCESS YOUR REFUND
APPLICATIONS

Fill the form and bring your last payday's check stub for 2010 to the Development Office.
Call 488-2470 ext. 253, 252, 251

PALAU BEACH BUNGALOWS Peace & Relaxation Palauan Style!

Only \$40+tax daily rate
Private a/c bedroom&bath, living room, kitchenette
Beachside on big island of Babeldaob
Melekeok State
30 minutes from Palau International Airport
RESERVATIONS: 680.587.2533
Swim, snorkel, jungle walks, cultural sites
palaubeachbungalows@palaunet.com
www.palauparadise.com

MESEKIU Basketball Corner

Team Mesekiu beat the Stingers on Thursday, Feb. 10, but lost to BOG on Friday, Feb. 11. Both games were close as Team Mesekiu has become a cohesive unit. Way to go TEAM MESEKIU!! The staff, faculty and students are encouraged to come and cheer for our team.

The following is the official schedule :
Jan 12 Ikelauns vs. Mesekiu (52 - 45)
Jan 17 Mesekiu vs. Meyuns RS (51- 89)
Jan 24 Ranchers vs. Mesekiu (74 - 91)
Jan 27 Mesekiu vs. Shark Attack (85 - 90)
Feb 1 Meda Boyz vs. Mesekiu (70 - 71)
Feb 7 Mesekiu vs. Cardinals (80 - 78)
Feb 10 Stingers vs. Mesekiu (70 - 72)
Feb 11 BOG vs. Mesekiu (68 - 64)
Feb 16 Mesekiu vs. 4Wheeler
Feb 17 Mesekiu vs. Surangel Kings

Come one, come all!! Let's cheer for our boys on the PCC Mesekiu Basketball team. For updates on game scheduling and time, please contact Hamilton Maech at 488-3885 or PNOG at 488-6562.

EDUCATION OPPORTUNITY

URM in the Biological Sciences
Apply for Summer 2011 to study and learn hands on in Hawaii.
Application: <http://www5.pbrc.hawaii.edu/urm/app/>
Deadline: Feb. 28, 2011
See Science instructors if you have questions

PCC CAN HELP YOU UPGRADE YOUR SKILLS TO

BOOST YOUR CAREER!
COME TO PCC!
Call 488-2470

Vacancy Announcement

- (1) Computer Technician, Computer Services Office
Salary range: \$12,049 - 20,607 per annum
- (2) Director, Human Resources Office
Salary range: \$18,730 - 28,833 per annum
- (3) Director, Finance
Salary range: \$18,730 - 28,833 per annum

For application forms and information, please contact Karen Mobel at PCC Human Resources Office at 488-2470/71, ext. 227.

PCC is an Equal Opportunity Employer

FREE!!!

Palau Community College



MESEKIU'S NEWS



Friday, February 18, 2011

Weekly Newsletter

Volume 13, Issue 7

Accreditation Steering Committee Presents Responses to Students

Dr. Tellei, PCC President and the Accreditation Steering Committee presented the Follow Up Report responses to the Associated Students of Palau Community College (AS-PCC). The presentation was to update the students on what the committee through the four subcommittees have developed in response to the findings and recommendations of the accrediting team that visited PCC. This Follow Up Report is what will be submitted to the Commission in March upon further review by the Executive Committee and the Board of Trustees.

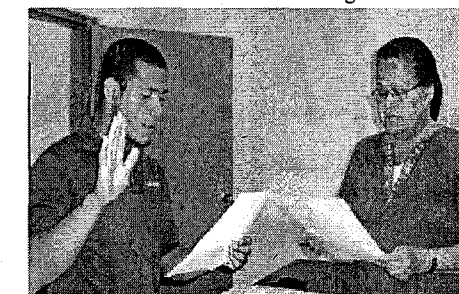


Steering Committee meeting ASPCC, inset: Dr. Tellei

New Kosrae State Organization President Sworn In

On February 10, 2011, the Dean of Student swore in Marvin Waguk as the new Kosrae State Organization (KSO) President for Spring 2011. The KSO needed to hold a special election this Spring 2011 to choose a president, as the seat had become vacant. On February 9, KSO voted Waguk who had been holding the office of the KSO Vice Presidency to become their

KSO President Cont'd Pg. 3



Marvin Waguk repeating his oath with Dean Edward

OTS NAPIRE Coordinator Visits PCC to Recruit Applicants for Program

Wendy Townsend from the Organization for Tropical Studies (OTS) Native American and Pacific Islander Research Experience (NAPIRE) Coordinator came to Palau and visited PCC campus. She was here to recruit for the OTS NAPIRE Program. She met with the Environmental/Marine Science (ES) and Agriculture (AG) students and did her presentation on the program, encouraging the students to apply for the program. The NAPIRE program was created to introduce Native Americans and Pacific Islander undergraduate students to the biodiversity of the tropics. It is a research experience and a cultural exchange program designed specifically to help students experience the process of applying the scientific method to ecological inquiry and discovery in a collaborative and team-oriented environment.



Front (l-r) Wendy, Dr. Tellei; Back (l-r): Mailie, Persis

Ms. Townsend spent four days in Palau, of which she spent time with ES students visiting PICRC (thanks to Dr. Tellei for the complimentary tickets), and also with the AG students at the PCC CRE - R&D Station.

Palau Community College is an accessible public educational institution helping to meet the technical, academic, cultural, social, and economic needs of students and communities by promoting learning opportunities and developing personal excellence.

Donation to Endowment Fund by Jeffrey Farrow

Jeffrey L. Farrow, the architect for the Associates of the United States for the Preservation of America's Heritage Abroad, Inc. donated \$500.00 to PCC Endowment Fund. Thank you for your generous support and contributions toward Palau's education.

Canadian Ambassador Extraordinary Pays Courtesy Visit to PCC

Michael Small, Ambassador Extraordinary & Plenipotentiary of Canada to Palau came to visit PCC President, Dr. Patrick Tellei and take a tour of the PCC Campus. President Tellei and Ambassador Small were discussing how diplomatic relations between the two countries can help build stronger collaboration between schools in Canada and PCC. President Tellei took Ambassador Small on a small campus tour in which they got to see the Tan Siu Lin Library and a little bit of the upper campus.



President Tellei & Ambassador Michael Small

ETS Sponsors PHS Trip to Rock Island

With constant support and services provided by the PCC ETS Program to its central schools, on Jan. 29, 2011 the Palau High School seniors went on a field trip on the account of their science class to observe the natural formation of the rock island of Palau. Students were exposed to how the rock formations started, including information based on Palauan legends. They also got to explore the unique Milky Way mud, learning about how the mud was formed and what caused the texture of the sand to be sticky mud. Many of these students are in the Tourism & Hospitality program at PHS and they got to hear first hand from the boat drivers about the several options of the tourism industry, and why it is important to the economy of Palau, including how it has an affect on the natural beauty of Palau. To end the day, PHS seniors enjoyed the natural beauty of the cemetery where they identified several species of marine fishes and corals that have been affected with constant changing of the environment. The students experienced firsthand activities that are not implemented in the classroom. With the hands on activities, these students were prepared to take the test on what they had learned and experienced on this trip.

FSA Scholarship Recipients For Spring 2011 Semester

Faculty Senate Association (FSA) awarded Chance Douglas and Byron Silil the FSA Scholarship for Spring 2011 Semester. Both were also recipients for the Fall 2010 scholarship and were able to meet and maintain the requirements in order to receive



Byron Silil



Chance Douglas

this semester's award. Congratulations for continuing to do well in your studies. The FSA Scholarship is awarded to two students each fall semester who apply and meet the following criteria: High School Graduate and 1st year incoming student at PCC with CGPA of 2.50 or higher; Annual household income of \$7,000.00 or below; Any major at PCC; Full time PCC student and maintain a minimum of 12 cr. per semester; 3-5 pg

FSA Scholarship Cont'd pg. 3

New Officers for the Environmental Club

The Environmental Club held its first meeting for Spring 2011 on Feb. 09. They elected the following new officers:

President: Byron Meltel Silil
Vice President: Itungelbai Bells
Secretary: Mailie Ngirioi
Treasurer: Dilmowais Rechirei

The Environmental Club would like to welcome the new members and invite anyone who is interested to come and join the club. Keep a lookout for posted schedule of the next club meeting.

UB Students & Parents Financial Literacy Workshop

Upward Bound Program conducted a College Planning, Budgeting and Financial Literacy workshop for UB Seniors and their parents on February 8, 2011. The purpose of the workshop is to strengthen the partnership with UB parents in financial planning and budgeting for their children's college education. Parents were also updated on program services/activities for school year 2010-2011 and at the same time, they were briefed on the following four UB's standardized objectives:

1. Academic improvement on standardized test
2. Project retention
3. Postsecondary enrollment
4. Postsecondary persistence

Progress report of the students from October to February 2011 were presented and discussed during the workshop.

UB Workshop Cont'd pg. 3



Parents and UB Seniors attending the workshop

BITS AND PIECES...

Student ID Card

ATTENTION ALL STUDENTS.

Student Services is still processing Student ID cards. Please stop by and get your Student ID Card made.

Hours: 9:00am - 11:00am
1:00pm - 3:00pm

Be sure to carry your Student ID Card with you always.

TAN SIU LIN PCC LIBRARY

HOURS of Operation:

M - Th 8:00am - 8:00pm
Friday 8:00am - 6:00pm
Saturday 9:00am - 6:00pm
Sunday CLOSED

Thank you for your patronage. We are here to serve the students and the community.

Online Computer Lab (Rm 63)

This lab is only for students taking online courses and only online related work is done here. The online courses for the spring semester are: EN112, EN114, HI259 and SC249. 8:00am - 8:00pm

Open Computer Lab (Rm 60)

Lab is for all students who need to use a computer. Also a place to print coursework. Not connected to internet. Only for course related work. Lab Hours: 9:00am - Noon / 2:00pm - 8:00pm

News/Stories Wanted

MESEKIU'S NEWS welcomes stories/articles/announcements from students, faculty, and staff. Submission deadline is Monday at 4:30 p.m. in hard and electronic copies to aduraa@palau.edu.

Please call ext. 252/253 if you intend to submit your article after Monday.

Asia Pacific Association for Fiduciary Studies Conference Sponsored by PCC

This year, PCC is pleased to announce that it is sponsoring the APAFS conference. APAFS will be presenting some of the most relevant topics concerning investments and fiduciary responsibilities. The goal of this year's conference is to expand the students world view on investing and encouraging them to think on a global scale, to raise the level of understanding and standards of practice among fiduciaries in the region, so that they may provide the most prudent stewardship of the funds entrusted to their care. Topics for the conference include: investment, stock markets, international trade, ratio analysis and many more. The conference will be held on March 18, 2011 at the PCC Assembly Hall from 9:00am - 4:00pm. A light lunch will be provided. For more information, please contact Keiden Skilang at 488-2470 ext 270.



New Endowment Fund Members

PCC would like to welcome new Endowment Fund members, Imengel Mad and Tau'o Ngirmeriil. Imengel previously worked for PCC at the Library, and now is at G.B. Harris. Tau'o Ngirmeriil is a Counselor at the Student Life Office here at the college. Welcome aboard, and thank you for your support. If you wish to be a part of the Endowment Fund, please contact Development Office at 488-2470 ext. 253.



Imengel Mad

Tau'o Ngirmeriil

UB Workshop Cont'd

Palau National Scholarship coordinator, Ms. Chur Oiph, was a guest speaker that night and she went over various scholarship and loan programs offered by the government of Palau and foreign scholarships available for Palauan students.

Workshop for underclassmen (9th - 11th grades) and their parents was held on February 9, 2011. Topics discussed at the workshop varied from financial planning, budgeting and financial literacy; academic year 2010-2011 overview and updates on student's progress reports and program requirements.



Parents and UB students (9th - 11th graders) attending workshop

FSA Scholarship Cont'd

essay; complete all sections of the application form with the necessary supporting documents; provide official transcripts from all high schools attended; provide minimum of 3 recommendation letters (2 of the recommendation letters must come from High School Teachers).

KSO President Cont'd

president. This left the vice presidency seat vacant and so the KSO members chose Nena Tulensru who was holding the office of Treasurer to become the Vice President. The president of each state organization holds a seat in Senate of the Associated Students of Palau Community College (ASPCC).