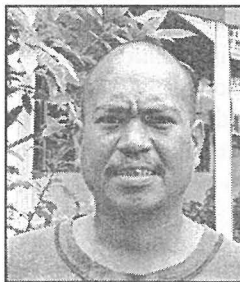


ALUMNI NOTES

Class of 2006 Arbedul Koshiha



Earned his Certificate of Achievement (CA) degree in Construction Technology. He completed his internship in 2006 at PCC Maintenance and was hired immediately as a Maintenance Helper. He has been working at the Maintenance Division until now.

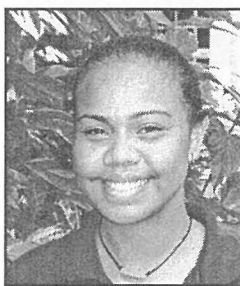
Message: *WORK HARD!*

Class of 2009 Zenaída Orak



Earned her Associate of Science (AS) degree in Environmental/Marine Science. She is currently working at Meyuns Elementary School as an Office Clerk. Message: *One love, One heart.*

Class of 2009 Keida Dulei



Earned her Associate of Applied Science (AAS) degree in Office Administration. She has been working at the Meyuns Elementary School since 2009 as the Library Aide. Message: *Don't judge the book by its cover.*

Alumni Notes showcases MOC & PCC alumni who are positive role models and contribute to the quality of life in their local communities. If you are that alumnus/alumna or know someone who is, please contact the PCC Development Office at telephone number 488-2471. We would like to feature you in future issues of the *Mesekiu's News*.

Mesekiu's News
Palau Community College
P.O. Box 9, Koror, Palau 96940

Celebrating Birthdays

Deikola Olikong Mar 08
Rosemary Kohama Mar 10



Happy Birthday To You!

EMS Students Present to UBMS Students

Contributed by Environmental/Marine Science Faculty

Environmental/Marine Science (EMS) students and faculty gave a presentation to Upward Bound Math and Science (UBMS) students on February 24, 2012 at the CE training room. The purpose of the presentation was to showcase the EMS program and also to hopefully increase the interests of these students in the Environmental/Marine Science program. The presentation included the history and factors that led to the establishment of the EMS program, students' opportunities to participate in sci-

ence internships, conferences and symposiums at the affiliated institutions such as UH-Manoa and UOG. Hopefully through this interaction, UBMS students will be encouraged to pursue Science related professions.

For more information about the EMS program or to find out more about the internships with affiliated institutions or any other opportunities for EMS students, contact the EMS faculty at 488-2470/2471 ext. 248.

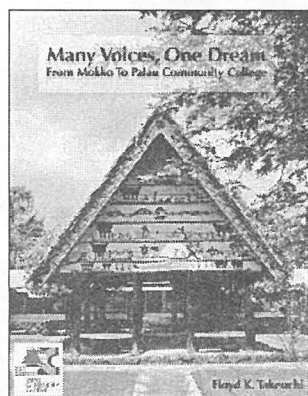
JOIN THE ENDOWMENT FUND TODAY!

Invest in the future of
Our Students, Our College, and Our Nation.
To support, contact us today at:

P.O. BOX 9 Koror, PW 96940
Phone: (680) 488-2470/2471 ext. 252/253
email: tellei@palau.edu
website: www.palau.edu

NEW BOOK

Many Voices, One Dream
From Mokko to Palau Community College
By Floyd Takeuchi



Available at PCC Bookstore!

Retail Price: \$35.00

Call 680-488-2470 for more information.
Online information at: www.palau.edu

PALAU BEACH BUNGALOWS

Peace & Relaxation Palauan Style!

Only \$40+tax daily rate
Private a/c bedroom&bath, living room, kitchenette
Beachside on big island of Babeldaob
Melekeok State
30 minutes from Palau International Airport
RESERVATIONS: 680.587.2533
Swim, snorkel, jungle walks, cultural sites
palaubeachbungalows@palaunet.com
www.palauparadise.com

Vacancy Announcement

- (1) English Instructor, Learning Resource Center
Salary range: \$14,802 - \$24,647 per annum
- (2) Math Instructor, Learning Resource Center
Salary range: \$14,802 - \$24,647 per annum
- (3) Financial Aid Counselor, Adm. & Financial Aid
Salary range: \$12,049.00 - \$20,607 per annum
- (4) Counselor, Student Life Office
Salary range: \$12,650 - \$19,479 per annum
- (5) CHL Palau Outreach Educator
Salary range: \$12,653 - \$19,479 per annum
- (6) Researcher/Aquaculturist
Salary range: \$30,000 per annum
- (7) Assistant Director of Admissions & Financial Aid
Salary range: \$16,010 - \$24,647 per annum
- (8) Associate Professor, Tourism & Hospitality
Salary range: \$16,010 - \$24,647 per annum
- (9) Accounting Technician (Payroll)
Salary range: \$9,913.00 - \$16,954 per annum

For application forms and information, please contact Karen Mobil at PCC Human Resources Office at 488-2470/71, ext. 227, email hr@palau.edu or download form at www.palau.edu

PCC is an Equal Opportunity Employer

FREE!!!

Palau Community College



MESEKIU'S NEWS

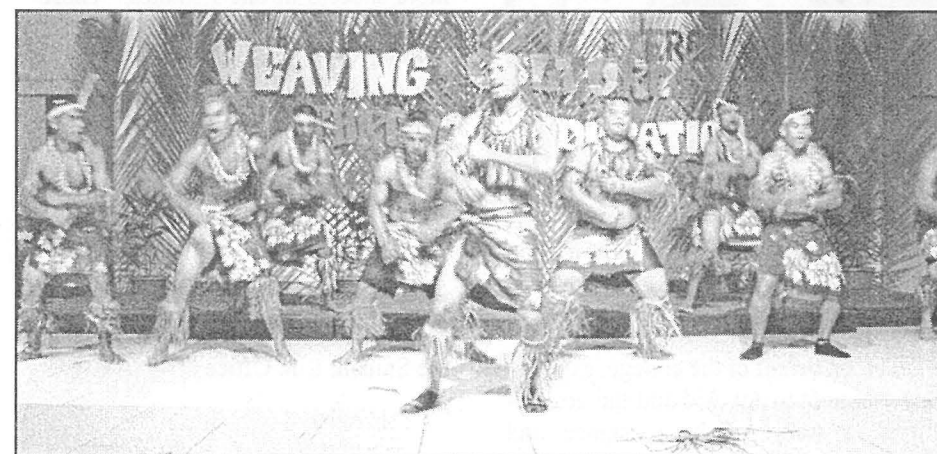


Friday, March 02, 2012

Weekly Newsletter

Volume 14, Issue 09

ASPCC Hosts International Night



Kosraean students performing their cultural dance.

The Associated Students of Palau Community College (ASPCC) held its annual International Night on February 25, 2012. The event showcased display booths from each entity (Kosrae-FSM, Pohnpei-FSM, Chuuk-

FSM, Yap-FSM, Republic of the Marshall Islands, Republic of Palau and Japan), a presentation from Japanese student, a skit from the Chuuk State Organization, performances

International Night cont'd on p.3

Information Workshops Held for Students



Students participating in the information workshop.

The Student Life Office held an Information Workshop on February 20 - 23, 2012, continuing with providing students with information to ensure their success in their education. The workshops were presented

by the Counselors/Advisors and the Director of Student Life, Ms. Hilda Ngiralmau. Topics that were discussed focused on developing academic strategies that will pro-

Workshop cont'd on p.2

Palau Community College is an accessible public educational institution helping to meet the technical, academic, cultural, social, and economic needs of the students and communities by promoting learning opportunities and developing personal excellence.

Tourism Club Enrolls New Members

Contributed by Tourism Club

This spring 2012, the Tourism Club held its first meeting on February 17, 2012 during which they elected new officers:

President - Kelau Remeliik
Vice President - Erin Benhart
Secretary - Whitney Mad
Treasurer - Shayna Osarch

Due to a low turn out of only 16 members in the meeting, a decision was made to hold a membership drive to promote the club and recruit new members. The membership drive was held on February 23, 2012 in the Mesekiu Bai from 9a.m. - 3p.m. The current members promoted the club and signed up new members. It was a successful drive as 59 students signed

Tourism cont'd on p.2



L-R: Kelau Remeliik, Shayna Osarch & Whitney Mad.

Dr. Tellei Meets With AusAid Officials



L-R: Leah Briones, Dean Chilton, Sophie Mackinnon, Dr. Tellei, Erin McGee and Christopher Batchelor.

Sophie Mackinnon, AusAid (Canberra), Erin McGee, North Pacific Program Coordinator, AusAid (Canberra) and Leah Briones, Senior Program Manager, AusAid (Pohnpei) on an oversight visit to assess the progress of the activities under the Pacific Technical Assistance Mechanism (PAC-TAM), visited the college on February 27, 2012. They met with PCC President Dr. Tellei, Dean Chilton, and Mr. Christopher Batchelor, a Second Language Acquisition

Advisor who has completed a fourteen (14) modules for English as a Second Language course. Also discussed were points of interest for future projects and the role of PCC in regards to the bilateral agreement between both Australian and Palauan government.

Dr. Tellei, on behalf of the college, expresses his gratitude to AusAid and the government of Australia for the assistance, and to Chris for his professionalism and hard work.

Entertainment DVDs at PCC Library

Contributed by Jessica Brooks

PCC Library has a small collection of entertainment DVDs available for the public to rent with a library account. Movies are available for overnight checkout and serial television shows may be borrowed for two

weeks. At this time, we are also seeking donations for our collection. So, if you have any videos at home that you don't plan on watching again, please donate them to the library. Help us grow our collection!



DVDs available at the Library.

Tourism cont'd from p.1

up to become members bringing the total membership to 74. The officers of the Tourism Club thank Alvina Marcil for her donation to the club and all the students who signed up and are committed to be a part of the Tourism Club.

Workshop cont'd from p.1

more success in one's studies. These strategies included effective note taking, test taking tips, how one's studying environment can help with retention of information, skills on how to study, and most importantly time management. Armed with these strategies, the students' probability of success should improve.

For information about Academic Strategies and Time Management, contact the Student Life Office at 488-3036.

"Smoke Free" Campus

Since February 13, 2012, the entire PCC campus has been designated as a "Smoke-Free Zone" pursuant to RPPL 8-27 and to promote good health in support of the national efforts to combat the NCD crisis.

Certain locations on campus have been selected as smoking areas:

1. LIUS Hut (across from Bank of Guam)
2. Round Cement Bench under the nut tree (Miich) on the parking lot leading to the Palau National Track
3. Dorm B Hut (between Dorm A & Dorm B)

Thank you students, faculty & staff and guests for your understanding and cooperation.

BITS AND PIECES...

TAX REFUND

REMINDER ~ Application for Refunds for Tuition/Contribution is **DUE** no later than **MARCH 30, 2012** at the Bureau of Revenue, Customs & Taxation .

If you still need to file, bring your 2011 Wages & Tax Statement or check stub #26 (DEC. 2011) and Non-Profit Organization receipts to Development Office to receive assistance with the filing of your taxes.

Contact Dilubch, Adora or Alvina at 488-2470/2471 ext. 252, 253, 250 for information and assistance.

LOST

LOST GOLD WEDDING RING - with 1 blue stone and 2 red stones. If found, please return to Chris Batchelor and get a **REWARD!**

More information of PCC online



www.palau.edu



Palau Community College - PCC

News/Stories Wanted

MESEKIU'S NEWS welcomes stories/articles/announcements from students, faculty, and staff. Submission deadline is Monday at 4:30 p.m. in hard and electronic copies to adoraa@palau.edu, dilubchs@palau.edu and alvinam@palau.edu.

Please call ext. 250/252/253 if you intend to submit your article after Monday or for more information.

International cont'd from p.1

by each entity and live band music by students Kelau and Neil.

International Night is an avenue for each entity represented in the student body to provide cultural activities to the college and the community. It also provides learning experiences such as leadership and civic responsibilities while having a great time. Japan Student Organization presented a slide show containing messages from those who were affected by the March 11, 2011 tsunami. Chuuk Student Organization presented a skit on the casualties of war "with less talk and more exaggerated actions" that had the audience rolling with laughter. The presen-

tations were followed by both traditional and contemporary dances from all organizations. Yap State Organization (men) stole the evening with their traditional dances with a bit of contemporary twist to it. As the evening wore on, the crowd comprised of students and the community members, had the opportunity to get up and dance to the live music.

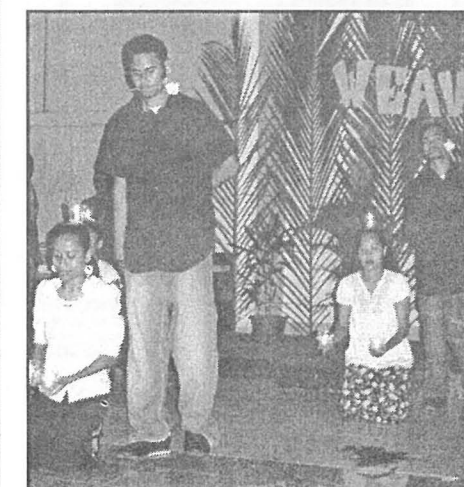
Thanks to the Cafeteria staff for providing delicious snacks during the intermission, to the Bureau of Public Safety for providing security and the community members who came out to support the students and experience the different cultures.



Palauan students performing a contemporary Palauan dance.



Contemporary dance performance by the Chuukese students.



Yapese students dancing the candle dance.



Taiwanese student, Able, displaying a Japanese kimono.